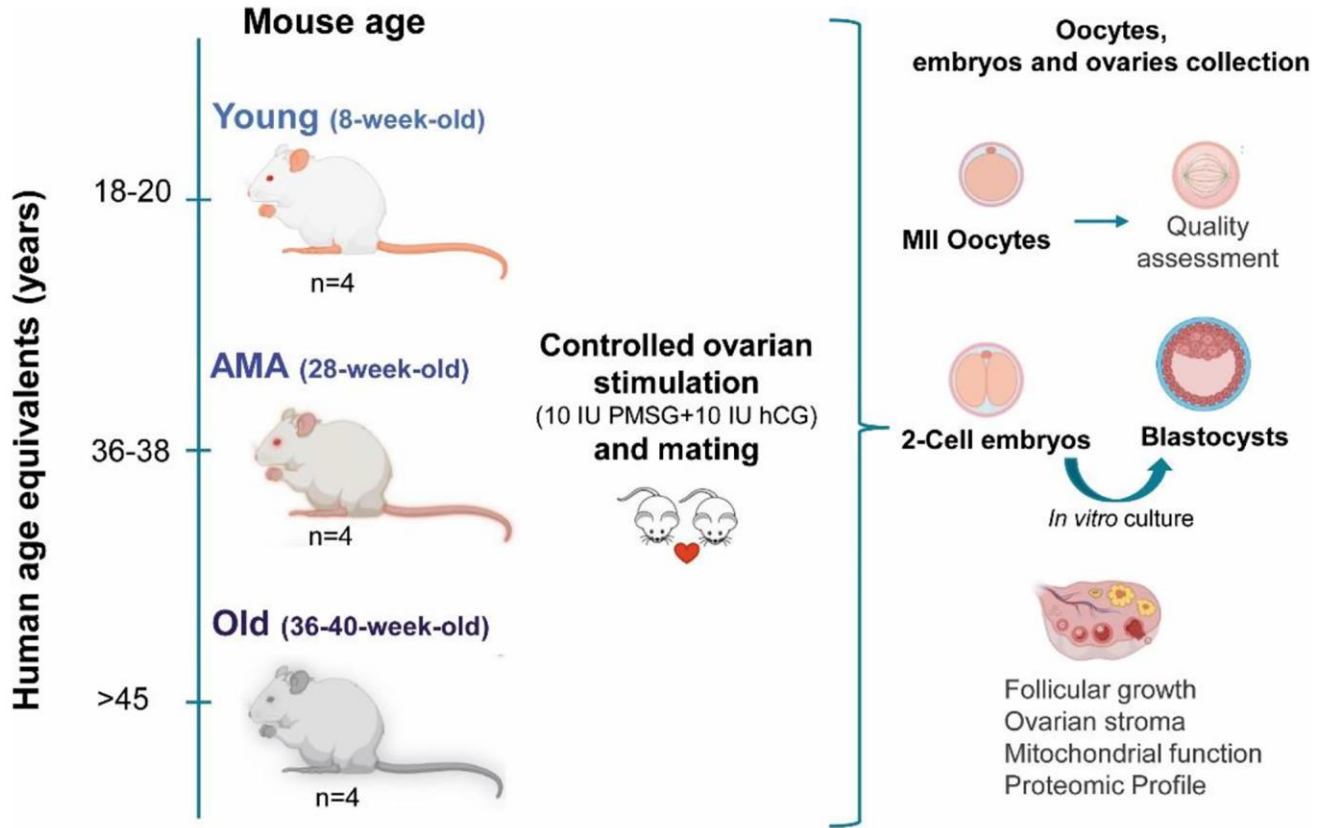


SUPPLEMENTARY FIGURE



**Supplementary Figure 1. NOD/SCID mouse model for physiological human aging.** Mice represented distinct reproductive stages of women: young (18-20 years old), Advance Maternal Age (AMA, 36-38 years old), and old (>45 years old). Mice were exogenously stimulated, mated, and sacrificed to recover metaphase-II (MII) oocytes, 2-cell embryos, and ovaries to analyze the short-term effect of age on fertility. Abbreviations: hCG: human chorionic gonadotropin; IU: International Unit; PMSG: pregnant mare serum gonadotropin.