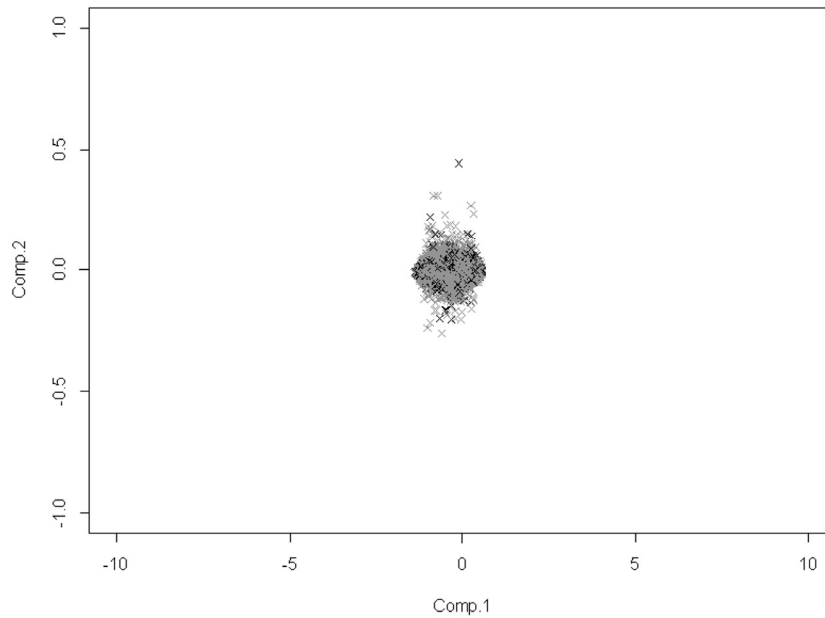
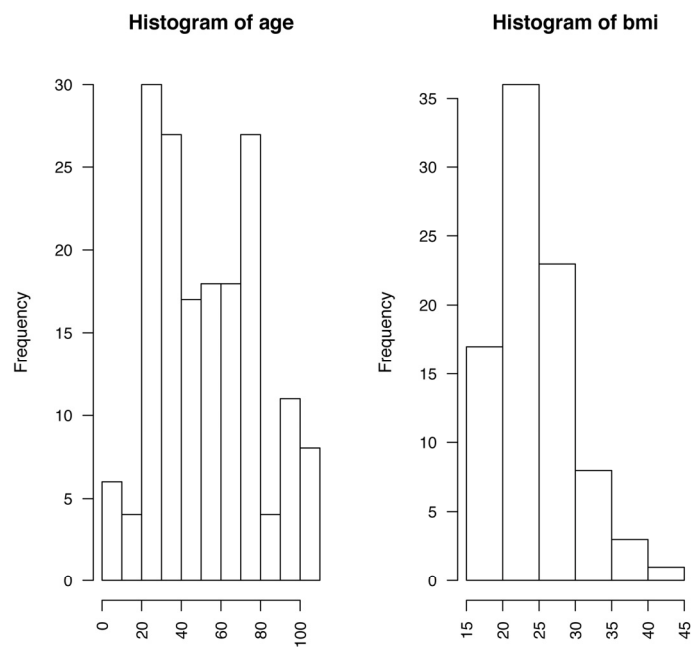


SUPPLEMENTAL FIGURES

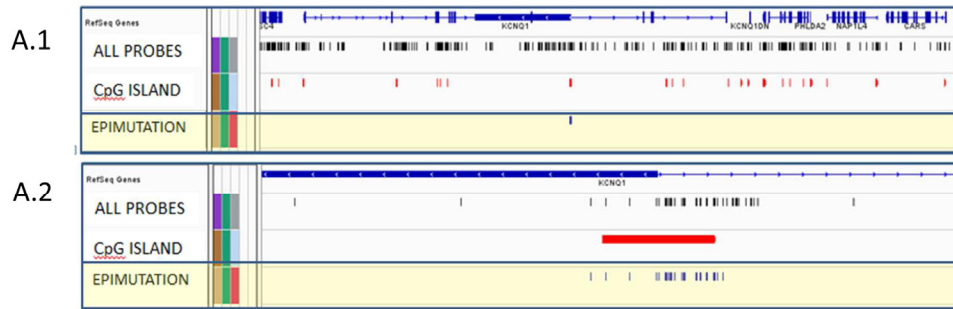


Supplemental Figure 1. Principal component Analysis of Methylation Values indicates that methylation profile of samples analysed is very similar among subjects

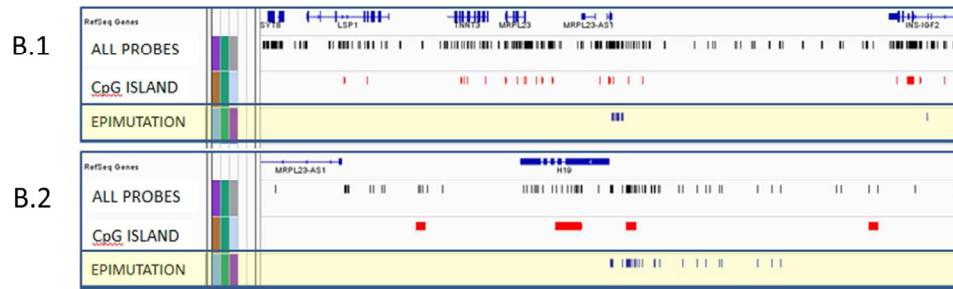


Supplemental Figure 2. Histogram describing age and bmi distribution of the population enrolled.

EXAMPLE: Beckwith-Wiedemann Syndrome



EXAMPLE: Silver Russell Syndrome



Supplemental Figure 3. Validation of the analytical approach. The picture shows a graphic representation of probes resulted epimutated in samples carrying a previously described epigenetic defect. **(A.1)** The Figure describes a case of Beckwith-Wiedemann Syndrome. In black the coordinates of all probes, in red the position of CpG island and in blue the genomic position of probes resulted epimutated. **(A.2)** Magnification of the region with the epigenetic alteration. **(B.1)** The Figure describes a case of Silver Russell Syndrome. In black the coordinates of all probes, in red the position of CpG island and in blue the genomic position of probes resulted epimutated. **(B.2)** Magnification of the region with the epigenetic alteration.