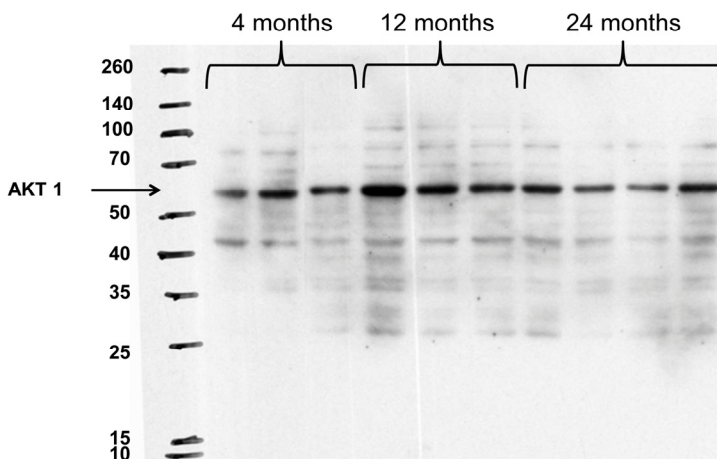


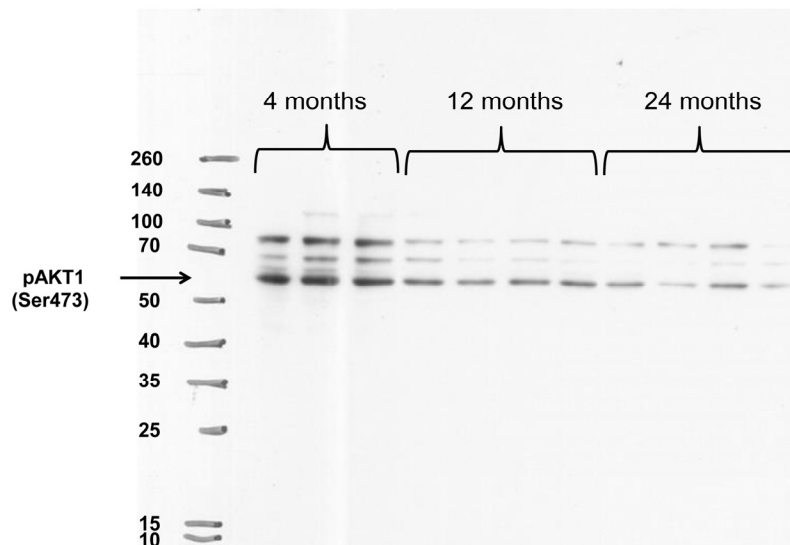
**SUPPLEMENTAL FIGURES**

**AKT 1** (Santa Cruz Biotechnology), M.W. ~ 60 KDa  
Spectra broad range protein ladder – Thermo Fischer



**Supplemental Figure 1.**

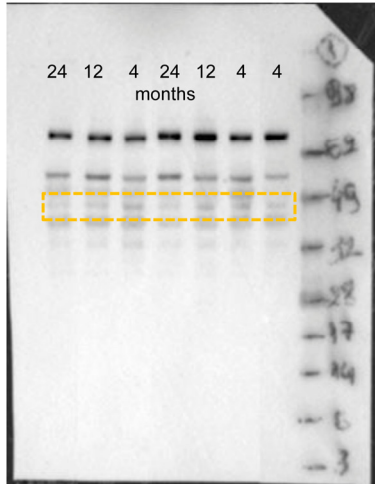
**pAKT1 (Ser 473)** (Sigma Aldrich), M.W. ~60 KDa.  
Spectra broad range protein ladder – Thermo Fischer



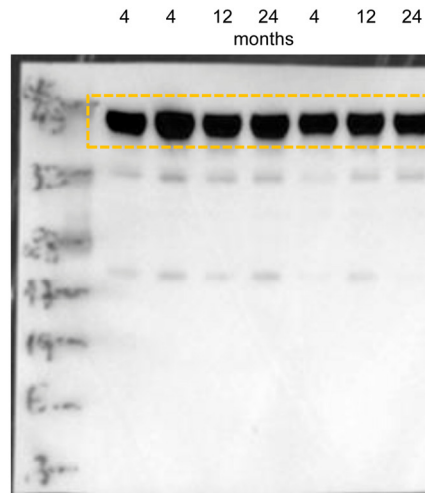
**Supplemental Figure 2.**

SeeBlue® Plus2 Pre-stained Protein Standard – Thermo Fischer

**pGSK-3 $\beta$  Ser 9 (Cell Signaling)**  
M.W. ~ 46 KDa

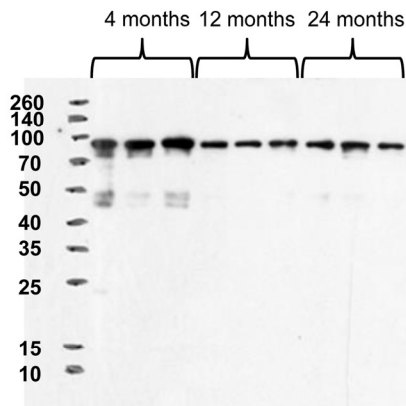


**GSK-3 $\beta$  (Cell Signaling) M.W. ~ 46 KDa**

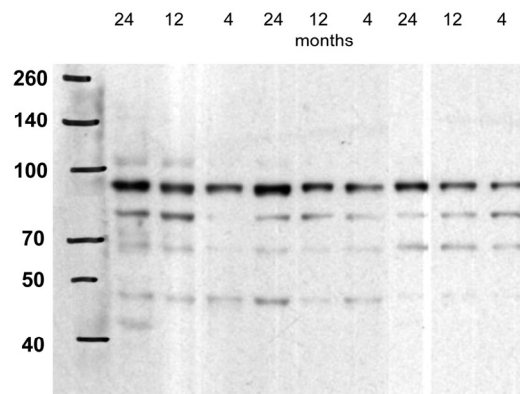


Supplemental Figure 3.

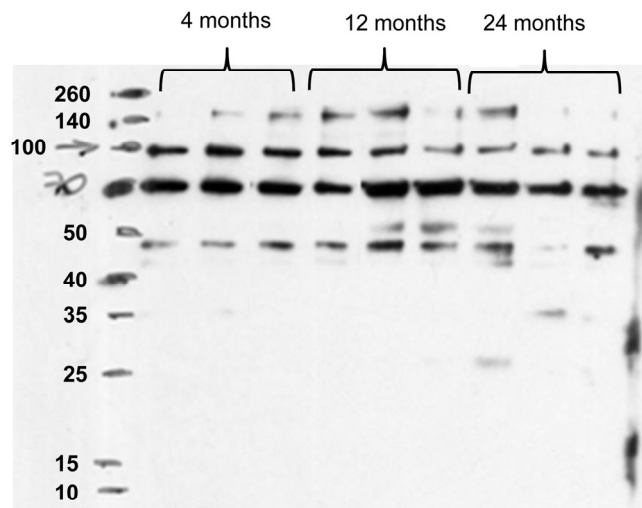
**$\beta$ -Catenin in Cytosol (Cell Signaling): M.W. ~92 Kda**  
Spectra broad range protein ladder  
(Thermo Fischer)



**phospho  $\beta$ -Catenin (Ser33/37/Thr41) (Cell Signaling): M.W. ~92 KDa**  
Spectra broad range protein ladder  
(Thermo Fischer)



Supplemental Figure 4.

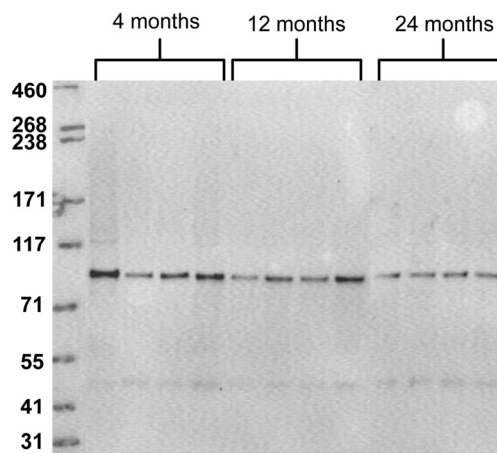


**Nuclear  $\beta$ -Catenin (Cell Signaling): M.W. ~92 Kda**  
Spectra broad range protein ladder (Thermo Fischer)

**Supplemental Figure 5.**

**Dvl-2 (Cell Signaling), M.W ~90-95**

HiMark™ Pre-stained Protein Standard, Thermo Fischer



**Supplemental Figure 6.**