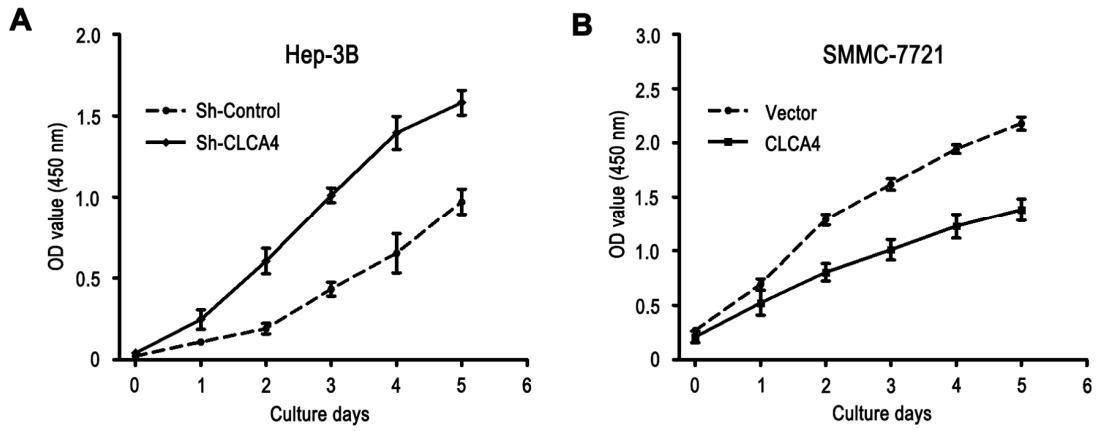
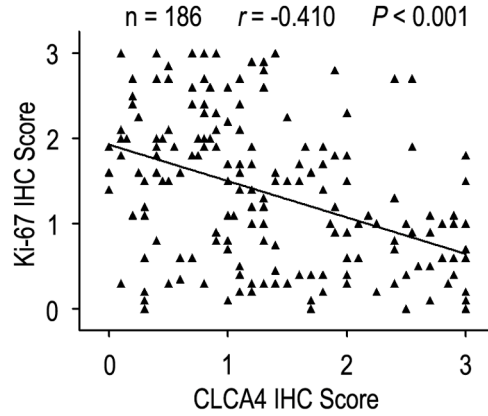


SUPPLEMENTARY FIGURES



Supplementary Figure S1. CLCA4 inhibits cell proliferation in HCC cells. The cell viability was improved in CLCA4-silenced cells compared with the control cells (A), while the opposite effect of cell viability was observed in CLCA4-transfected cells (B).



Supplementary Figure S2. The correlation of CLCA4 and Ki-67 expression in HCC tissues. IHC showed CLCA4 expression was negatively correlated with Ki-67 expression.

