

Nutraceutical effects of *Emblica officinalis* in age-related macular degeneration

Sonali Nashine¹, Raj Kanodia², Anthony B. Nesburn^{1,3}, Girish Soman⁴, Baruch D. Kuppermann¹, M. Cristina Kenney^{1,5}

¹Department of Ophthalmology, Gavin Herbert Eye Institute, University of California Irvine, Irvine, CA 92697, USA

²Rhinoplasty Surgeon, Dr. Raj Kanodia Medical Group, Beverly Hills, CA 90210, USA

³Cedars-Sinai Medical Center, Los Angeles, CA 90048, USA

⁴Nisarga Biotech Pvt Ltd, Janai Malai, Satara, Maharashtra 415004, India

⁵Department of Pathology and Laboratory Medicine, University of California Irvine, Irvine, CA 92697, USA

Correspondence to: M. Cristina Kenney; **email:** mkenney@uci.edu

Keywords: *Emblica officinalis*, *Phyllanthus emblica*, Indian gooseberry, Amla, nutraceutical, age-related macular degeneration, AMD

Received: December 26, 2018

Accepted: February 6, 2019

Published: February 21, 2019

Copyright: Nashine et al. This is an open-access article distributed under the terms of the Creative Commons Attribution License (CC BY 3.0), which permits unrestricted use, distribution, and reproduction in any medium, provided the original author and source are credited.

ABSTRACT

***Emblica officinalis* Gaetrn (i.e., *Phyllanthus emblica*/ Indian gooseberry/ Amla) (EO) has been used extensively as a nutraceutical in several diseases since it is known to boost immunity and offers numerous health benefits such as antioxidant, anti-inflammatory, and anti-aging effects. The goal of our study was to test the hypothesis that EO will rescue human AMD RPE transmitochondrial cells from mitochondria-induced cellular damage. AMD RPE transmitochondrial cell lines were created by fusing mitochondria DNA-deficient APRE-19 (*Rho0*) cells with platelets isolated from AMD patients, and therefore had identical nuclei but differed in mitochondrial DNA content. These AMD RPE cells were treated with EO extract followed by characterization of effects of EO using cellular and molecular assays. Herein, EO significantly improved live cell number and mitochondrial membrane potential, reduced apoptosis and oxidative stress, down-regulated *VEGF*, and up-regulated *PGC-1 α* . In conclusion, EO improved cellular and mitochondrial health, thereby playing a key cytoprotective role in AMD *in vitro*. Further studies are required to examine the mechanisms that mediate the cytoprotective effects of EO.**

INTRODUCTION

Emblica officinalis Gaetrn (*Phyllanthus emblica*), commonly known as Indian gooseberry or Amla, is an edible fruit which is borne on a deciduous tree of the same name. All parts of the *Emblica officinalis* (EO) tree i.e, fruits, bark, leaves, seeds, flowers, and roots are known to have medicinal properties. EO is native to the tropical and subtropical regions of Southeast Asia including India, China, Malaysia, Bangladesh, Sri Lanka, and Mascarene Island. EO is a vital medicinal plant in Ayurveda which is the ancient holistic system of medicine practiced in the Indian subcontinent.

Several health rejuvenating Ayurvedic formulations have been prepared using EO fruit (referred to as EO throughout the paper) as a primary ingredient [1]. Phytochemically, EO is composed of several bioactive compounds such as flavonoids (i.e., Quercetin, Kaempferol), phenolic compounds (i.e., gallic acid, methyl gallate, ellagic acid, trigallayl glucose), tannins (i.e., Emblicanin A and B, phyllaemblicin B, punigluconin, pedunculagin, Chebulinic acid, Corilagin, Geraniin, Ellagotannin), amino acids (i.e., glutamic acid, aspartic acid, alanine, lysine, proline, cystine), fatty acids (i.e., stearic acid, oleic acid, palmitic acid, myristic acid, linolenic acid, linoleic acid), alkaloids

(i.e., Phyllantine, Phyllembain, Phyllantidine), pectin, citric acid, ascorbic acid (Vitamin C), cellulose, gum, and albumin. Based on the stage of ripening, the vitamin C content of EO varies and is the highest in ripe EO fruits (~800 mg/100 g) compared to unripe (~560 mg/100 g) or semi-ripe (~600 mg/100g) EO fruits [2].

Due to its high Vitamin C content which on an average is ~600 mg/100 g, EO is well-known as an immunity boosting food. In addition to vitamin C, EO is a rich source of antioxidants, including polyphenols, which confer EO its free radical scavenging potential [3]. A study by Carlson et al. revealed that EO has an antioxidant content of ~261.5 mmol/100 g which was substantially higher than numerous other plant-based foods and supplements that were tested using the FRAP assay in the same study [4]. Substantive evidence validates the antioxidant and cytoprotective properties of EO in several disease models including Alzheimer's, diabetes, cardiac diseases, inflammatory disorders, hepatic diseases, atherosclerosis, cancer, and pulmonary fibrosis [5-11].

The goal of the current study was to examine and characterize the nutraceutical potential of EO in a human retinal pigment epithelial (RPE) age-related macular degeneration (AMD) transmitochondrial cybrid cell model [12]. We hypothesized that EO will rescue AMD RPE transmitochondrial cells from cellular and mitochondrial damage *in vitro*. The results of this novel

study the cytoprotective role of EO in AMD RPE cybrid cells in terms of increased viability and reduction in oxidative stress and apoptosis.

RESULTS

EO concentration optimization

To determine the optimum working concentration of EO for all experiments, we performed an initial concentration titration experiment wherein AMD cybrids were treated with increasing doses of EO i.e, 10, 15, 20, and 25 mg/mL of EO (Figure 1) followed by measurement of viable cell numbers using MTT assay. Although compared to untreated AMD cybrids (Bar 1; 1 ± 0.382 (Mean \pm SEM) arbitrary unit (a.u.), $n=3$), 10 mg/mL EO-treated AMD cybrids (Bar 3; 1.59 ± 0.191 a.u.; $n=3$) showed a 59 % higher viable cell number, the difference was not statistically significant ($p=0.2387$). However, EO-treated cybrids showed significantly improved viable cell number at 15 mg/mL (Bar 4; 295 % increase; 3.95 ± 0.240 a.u.; $p<0.001$; $n=3$), 20 mg/mL (Bar 5; 330 % increase; 4.30 ± 0.193 a.u.; $p<0.001$; $n=3$), and 25 mg/mL (Bar 6; 357.5 % increase; 4.575 ± 0.297 a.u.; $p<0.001$; $n=3$) compared to their untreated counterparts. No difference ($p=0.96$) in cell viability was observed between the untreated and solvent control (Bar 2; 1.018 ± 0.018 a.u.; $n=3$) groups. Based on these results, we chose 25 mg/mL as the optimal working concentration of EO for all experiments performed in this study.

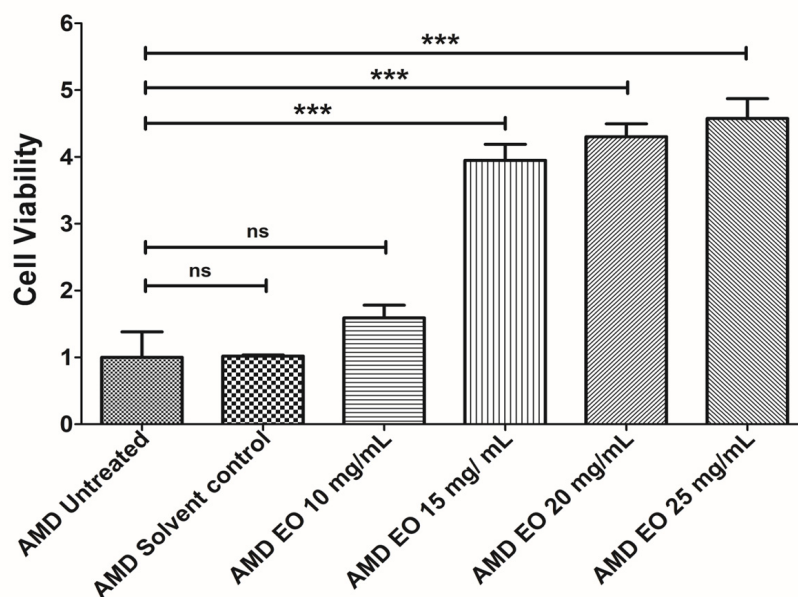


Figure 1. EO concentration optimization. Bar graph showing the effects of EO on cell death in AMD RPE cybrid cells. No difference was observed between the AMD untreated (bar 1) vs. AMD solvent control (bar 2) groups. Furthermore, no statistically significant difference was observed between untreated (bar 1) and 10 mg/mL EO-treated (bar 3) AMD cybrids. Higher viable cell numbers were observed in EO-treated AMD cybrids at concentrations of 15 mg/mL (bar 4), 20 mg/mL (bar 5), and 25 mg/mL (bar 6). *** indicates $p<0.001$; ns indicates non-significant p-value. Data are presented as mean \pm SEM and normalized to untreated AMD cybrids which were assigned a value of 1. Experiments were performed at the 24 h time-point.

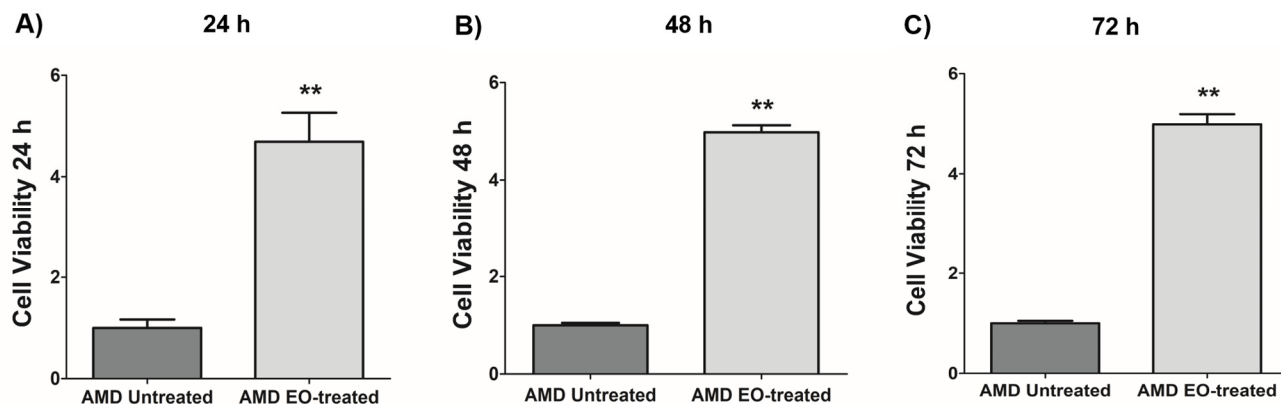


Figure 2. Effect of EO on cell viability. When treated with 25 mg/mL EO, AMD cybrid cells showed consistently increased viable cell numbers at 24 h (A), 48 h (B), and 72 h (C) compared to their untreated counterparts. ** indicates $p < 0.01$. Data are presented as mean \pm SEM and normalized to untreated AMD cybrids which were assigned a value of 1.

Effect of EO on cell viability

We next examined the effects of treatment of AMD RPE cybrids with 25 mg/mL EO over a time course i.e., at 24 h, 48 h, and 72 h post EO treatment (Figure 2). As anticipated, compared to their untreated counterparts, we observed significantly higher viable cell numbers in EO-treated AMD cybrids at 24 h (369 % increase; AMD untreated: 1 ± 0.166 a.u., AMD EO-treated: 4.69 ± 0.571 a.u.; $p=0.002$; $n=6$) (Figure 2A), 48 h (398.1 % increase; AMD untreated: 1 ± 0.049 a.u., AMD EO-treated: 4.981 ± 0.145 a.u.; $p=0.008$; $n=5$) (Figure 2B), and 72 h (398.8 % increase; AMD untreated: 1 ± 0.049 a.u., AMD EO-treated: 4.988 ± 0.203 a.u.; $p=0.008$; $n=5$) (Figure 2C), suggesting that EO is able to rescue AMD cybrids from cell death [13].

Effect of EO on Caspase-3/7 and NucLight staining

To compare the effects of EO on Caspase-3/7 activity, we morphologically monitored the kinetic activation of Caspase-3/7 using IncuCyte® live-cell imaging (Figure 3). Figure 3A shows representative overlap live-cell images of AMD RPE cybrids stained with Caspase-3/7 Green + NucLight Red reagents. The left panel represents untreated AMD cybrids and the right panel represents EO-treated AMD cybrids. We observed that EO reduced the number of Overlap object count (Yellow) (i.e., Caspase-3/7 Green + NucLight Red staining / NucLight Red object count) at 24 h (34.8 % decrease; AMD untreated: 1 ± 0.076 a.u., AMD EO-treated: 0.652 ± 0.032 a.u.; $p=0.029$; $n=4$) (Figure 3B) and 48 h (22.7 % decrease; AMD untreated: 1 ± 0.032 a.u., AMD EO-treated: 0.773 ± 0.023 a.u.; $p=0.001$, $n=4$) (Figure 3C).

These results suggest that EO can mitigate Caspase-3/7 mediated apoptosis in AMD RPE cybrids.

Effect of EO on Caspase-3 and MT-RNR2 gene expression

Treatment with EO led to significant downregulation of *Caspase-3* gene (60 % decrease; AMD untreated: 1 ± 0.063 a.u.; AMD EO-treated: 0.400 ± 0.112 a.u.; $p=0.008$; $n=5$) (Figure 4A), suggesting that EO reduces caspase-3-mediated apoptosis in AMD cybrids. Moreover, upregulation of the mitochondria derived peptide (MDP)-coding *MT-RNR2* gene (3006 % increase; AMD untreated: 1 ± 0.231 a.u.; AMD EO-treated: 31.06 ± 11.93 a.u.; $p=0.008$; $n=5$) (Figure 4B) was observed in EO-treated AMD cybrids compared to untreated cells, suggesting higher MDP production as a result of EO treatment.

Effect of EO on ROS assay and SOD2 gene expression

To measure reactive oxygen species levels, we performed ROS assay using H2DCFDA reagent. Addition of EO to AMD cybrids reduced ROS levels at 24 h, 48 h and 72 h time points: 24 h (39.4 % decrease; AMD untreated: 1 ± 0.082 a.u., AMD EO-treated: 0.606 ± 0.023 a.u.; $p=0.008$, $n=5$) (Figure 5A), 48 h (41.1 % decrease; AMD untreated: 1 ± 0.076 a.u., AMD EO-treated: 0.589 ± 0.011 a.u.; $p=0.008$, $n=5$) (Figure 5B), and 72 h (43.9 % decrease; AMD untreated: 1 ± 0.166 a.u., AMD EO-treated: 0.561 ± 0.009 a.u.; $p=0.008$, $n=5$) (Figure 5C). Furthermore, EO-treated AMD cybrids showed upregulation of *SOD2* gene compared to their untreated counterparts (357.3 % increase; AMD

untreated: 1 ± 0.133 a.u.; AMD EO-treated: 4.573 ± 0.533 a.u.; $p=0.029$; $n=4$) (Figure 5D). These results

suggest that EO can reduce oxidative stress in AMD cybrids.

A) Caspase-3/7 Green + NuLight Red Overlap Representative images

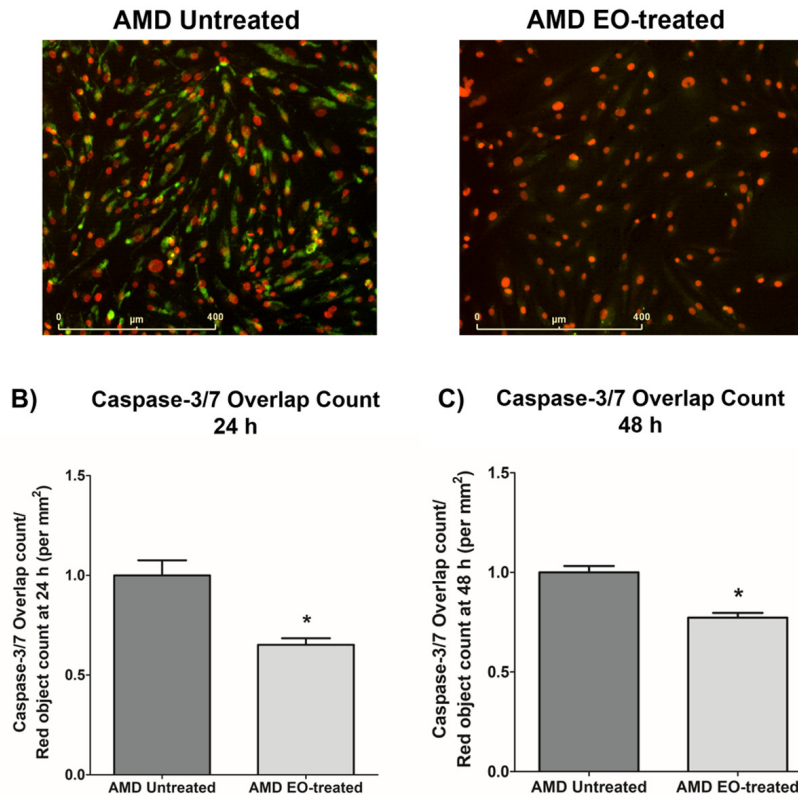


Figure 3. Effect of EO on Caspase-3/7 and NuLight staining. This figure shows representative IncuCyte live-cell images of untreated and EO-treated AMD cybrid cells stained with NuLight Red and Caspase-3/7 Green reagent (A), and quantitation graphs for Caspase-3/7 Green and NuLight Red staining at the 24 h (B) and 48 h (C) time points. * indicates $p<0.05$. Data are presented as mean \pm SEM, normalized to untreated AMD cybrids, which were assigned a value of 1.

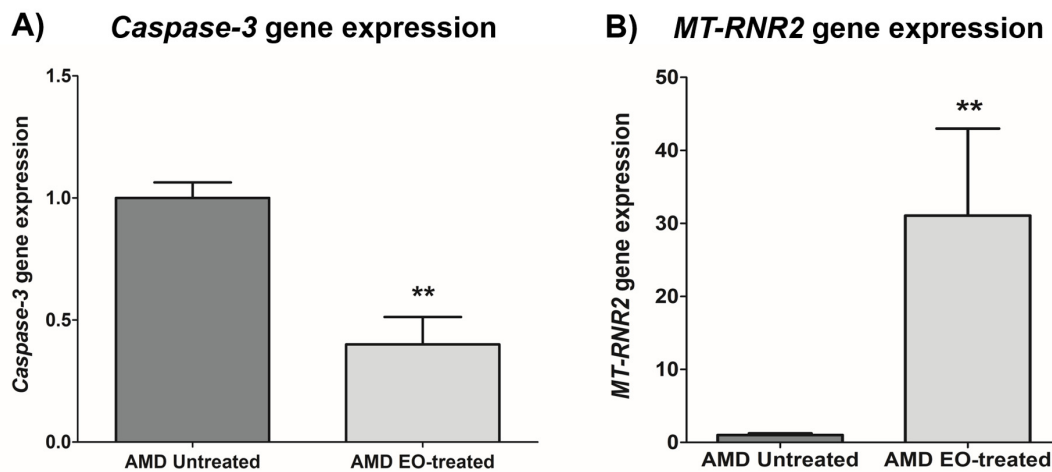


Figure 4. Effect of EO on Caspase-3 and MT-RNR2 gene expression. Treatment of AMD cybrids with EO reduced the gene expression of Caspase-3 (A) and up-regulated MT-RNR2 gene (B). ** indicates $p<0.01$. Data are presented as mean \pm SEM and normalized to untreated AMD cybrids which were assigned a value of 1.

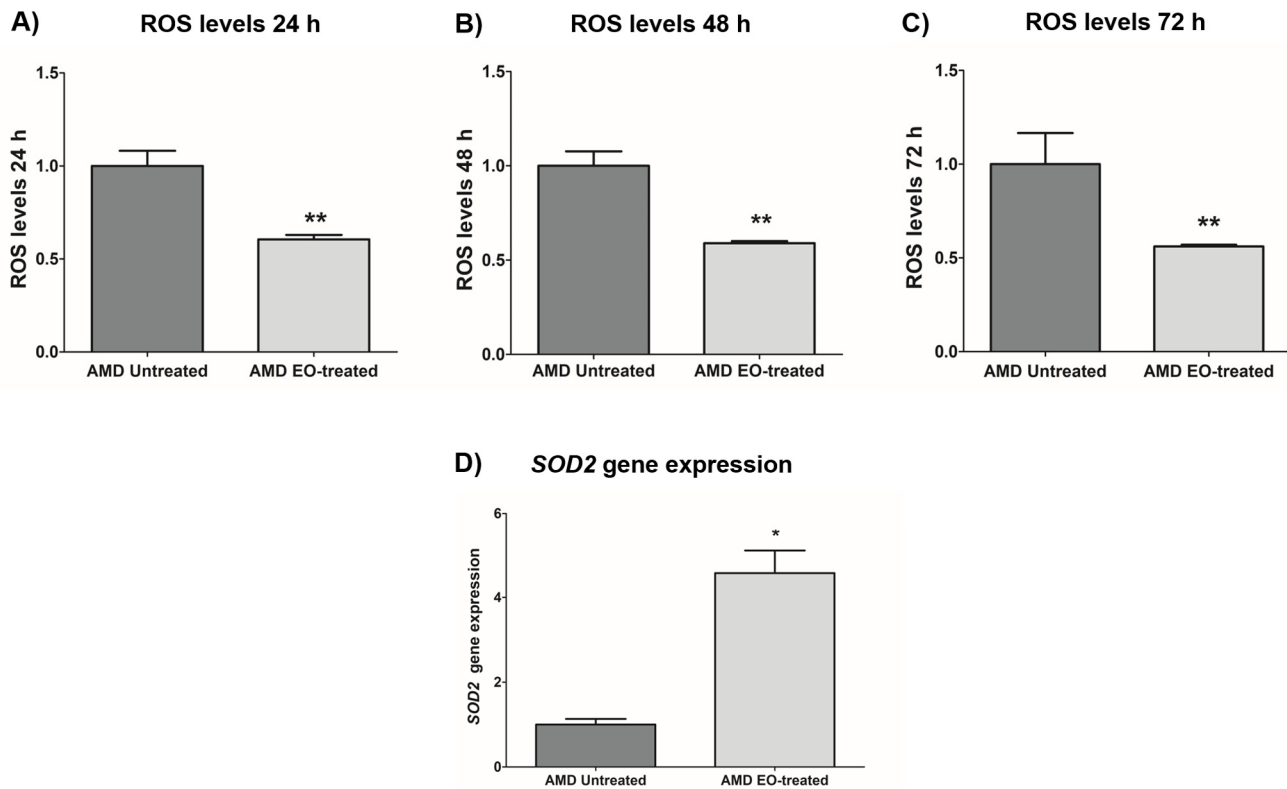


Figure 5. Effect of EO on ROS assay and *SOD2* gene expression. Addition of EO lowered ROS levels in AMD cybrids at 24 h (A), 48 h (B), and 72 h (C) time points. (D) shows increased expression of the antioxidant gene, *SOD2*, as a result of treatment with EO. ** and * indicate $p < 0.01$ and $p < 0.05$ respectively. Data are presented as mean \pm SEM and normalized to untreated AMD cybrids which were assigned a value of 1.

Effect of EO on mitochondrial membrane potential and *PGC-1 α* gene expression

Compared to their untreated counterparts, EO-treated AMD cybrids showed elevated mitochondrial membrane potential at 24 h post-treatment (169.3 % increase; AMD untreated: 1 ± 0.139 a.u., AMD EO-treated: 2.693 ± 0.246 a.u.; $p = 0.029$, $n = 4$) (Figure 6A). Moreover, EO-treated AMD cybrids showed up-regulation of the *PGC-1 α* gene (1498 % increase; AMD untreated: 1 ± 0.277 a.u.; AMD EO-treated: 15.98 ± 1.589 a.u.; $p = 0.029$; $n = 4$) (Figure 6B). These results suggest that EO promotes mitochondrial health and function in AMD cybrids.

Effect of EO on *VEGF* gene expression and on cell viability and ROS levels in amyloid- β -stressed AMD cells

Since VEGF has been implicated in the etiology of AMD, we next sought to compare *VEGF* gene expression between untreated and EO-treated AMD cybrids. We observed significant downregulation of *VEGF* gene

in EO-treated AMD cybrids compared to untreated cybrids (64.7 % decrease; AMD untreated: 1 ± 0.066 a.u.; AMD EO-treated: 0.353 ± 0.132 a.u.; $p = 0.029$; $n = 4$) (Figure 7A).

As amyloid- β is a component of drusen deposits formed in AMD, it is also important to determine the effect of EO treatment on amyloid- β -induced damage in AMD cybrids. Our previous studies have established that exogenously added amyloid- β_{1-42} (active form) peptides stressed AMD RPE cybrid cells. [13-14] Therefore, we analyzed the effects of EO against amyloid- β -induced damage in AMD cybrids using amyloid- β_{1-42} (active form) and amyloid- β_{42-1} (inactive scrambled control) peptides. Pretreatment with EO preserved the viable cell number and reduced ROS levels in amyloid- β_{1-42} -treated AMD cybrids. In terms of cell viability (Figure 7B), there was a 263.36 % increase in viable cell number in EO + amyloid- β_{1-42} treated versus amyloid- β_{1-42} alone-treated AMD cybrids (AMD amyloid- β_{1-42} : 0.625 ± 0.039 a.u.; AMD EO + amyloid- β_{1-42} : 2.271 ± 0.258 ; $p < 0.001$; $n = 4$) (Figure 7B – bar 2 vs. bar 5). No difference in cell viability was observed between untreated

and amyloid- β_{42-1} (scrambled control)-treated (0.927 ± 0.054 ; $p=0.364$; $n=4$) AMD cybrids. AMD cybrids treated with EO-alone (4.213 ± 0.242 , $n=4$) served as one of the controls. Furthermore, as shown in Figure 7C, pretreatment with EO reduced ROS levels by 74.1 % in EO + amyloid- β_{1-42} treated versus amyloid- β_{1-42} alone-treated AMD cells (AMD amyloid- β_{1-42} : 1.193 ± 0.025 a.u.; AMD EO + amyloid- β_{1-42} : 0.309 ± 0.028

a.u.; $p<0.001$; $n=3$) (Figure 7C – bar 2 vs. bar 5). No difference in ROS levels was observed between untreated and amyloid- β_{42-1} (scrambled control)-treated (1.047 ± 0.112 ; $p=0.723$; $n=3$) AMD cybrids. EO-alone-treated AMD cybrids (0.316 ± 0.015 , $n=3$) served as one of the controls. These results suggest that EO can rescue AMD RPE cybrid cells from cellular stress induced by amyloid- β *in vitro*.

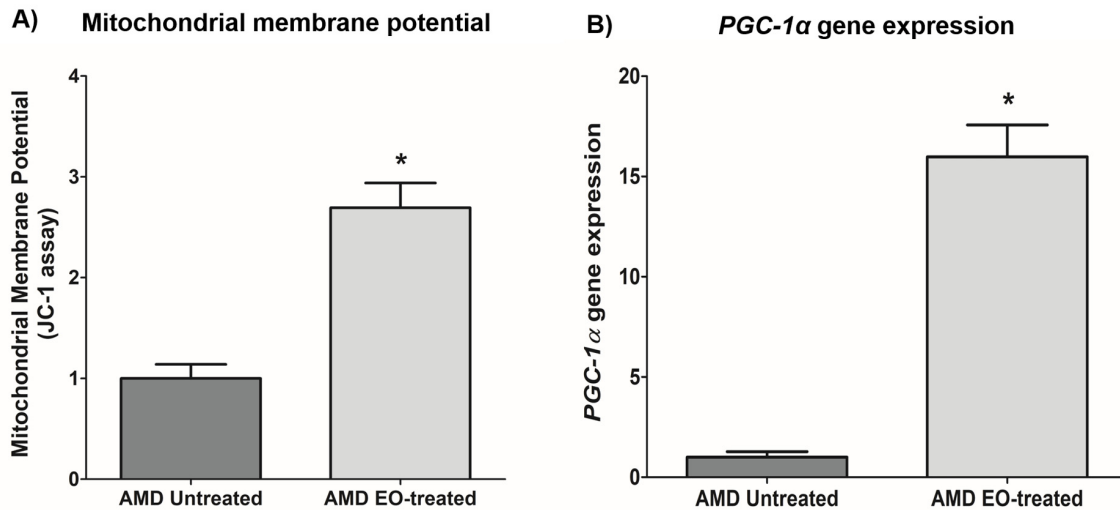


Figure 6. Effect of EO on mitochondrial membrane potential and *PGC-1 α* gene expression. This figure shows increased mitochondrial membrane potential in EO-treated AMD RPE cells (A), and increased *PGC-1 α* gene expression in EO-treated AMD cybrids (B). * indicates $p<0.05$. Data are presented as mean \pm SEM and normalized to untreated AMD cybrids which were assigned a value of 1.

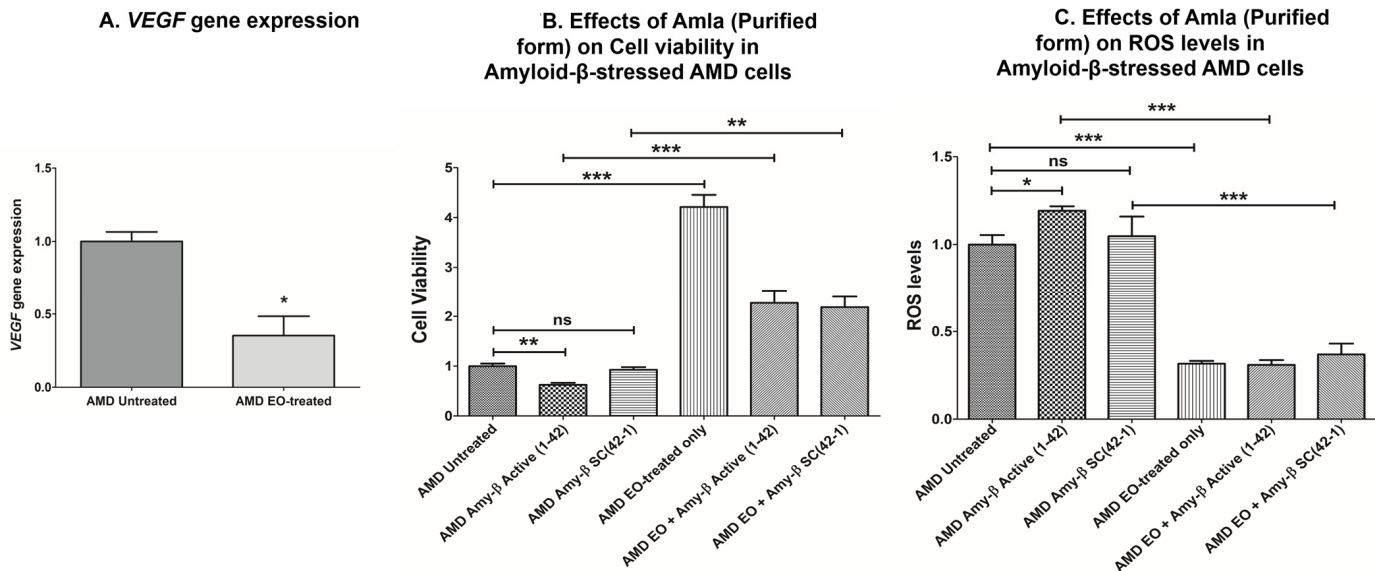


Figure 7. Effect of EO on *VEGF* gene expression, and on cell viability and ROS levels in amyloid- β -stressed AMD cells. This figure showed down-regulation of *VEGF* gene in EO-treated AMD cybrids (A). Pretreatment with EO rescued AMD cybrids from amyloid- β -induced damage as shown by changes in cell viability (B) (bar 2 versus bar 5) and ROS levels (C) (bar 2 versus bar 5). *, **, and *** indicate $p<0.05$, $p<0.01$, and $p<0.001$ respectively; ns indicates non-significant p-value. Data are presented as mean \pm SEM and normalized to untreated AMD cybrids which were assigned a value of 1.

DISCUSSION

In the present study, we report the protective role of *Emblica officinalis* in rescuing human AMD RPE cybrid cells from damage. Herein, we analyzed the effects of exogenously added EO on the viable cell numbers, ROS levels, mitochondrial membrane potential, gene expression of *Caspase-3*, *SOD2*, *PGC-1 α* , *MT-RNR2*, and *VEGF*, and against amyloid- β -induced toxicity in AMD RPE transmitochondrial cybrid cell lines *in vitro*.

We began our EO study by testing a varying range of concentrations of EO i.e., 10, 15, 20, and 25 mg/mL in AMD RPE cybrids *in vitro* and chose EO concentration of 25 mg/mL as the final optimal working concentration for all experiments. To our knowledge, this is the first study investigating the effects of EO on RPE cybrids containing damaged AMD mitochondria [13]. According to previous literature, varying doses of EO fruit extract are administered depending on the species, the model system, and nature of the study. For instance, Rao et al. found clinically relevant concentrations at 1–100 μ g/ml of EO fruit extract to be effective in human umbilical vein endothelial cells (HUVEC) *in vitro* [15]. Yamamoto et al. demonstrated that treatment with 100–200 μ g/mL EO was effective in C2C12 myoblasts, a skeletal muscle cell line, *in vitro* [16]. However, *in vivo* and human studies required higher concentrations of EO fruit extract. For example, Lim et al. showed administration of 300 mg/kg EO to Sprague-Dawley (SD) rats was effective [17]. In diabetic studies, human subjects were given oral concentrations of EO at 1 g/mL, 2 g/mL, and 3 g/mL in water [6].

We next characterized the cytoprotective role of EO in AMD cybrids. Comparison of cell viability between untreated and EO-treated AMD cybrids demonstrated consistently higher viable cell numbers in EO-treated AMD cybrids at 24 h, 48 h and 72 h post EO-treatment. Our observations were consistent with previous studies that have highlighted the cytoprotective role of EO. For example, EO at a concentration of 500 mg/kg significantly increased cell viability, thereby rescuing splenocytes from arsenic-induced cell damage in mice [18]. Another recent finding revealed attenuation of t-BHP-induced cytotoxicity by pretreatment with EO for 48 h in a murine skeletal muscle cell line [16]. EO was shown to inhibit chromium-induced toxicity by enhancing percent cell survival and cell proliferation in an *in vitro* murine macrophage model [19]. In addition, EO prevented apoptotic cell death and enhanced cell proliferation in lymphocytes isolated from Sprague-Dawley rats [20]. Another study demonstrated the role of EO as a cytoprotectant *in vivo* [21].

It has been established previously that AMD RPE transmitochondrial cybrid cells are damaged due to diseased AMD mitochondria and undergo apoptotic cell death [13–14]. Therefore, to examine the effects of EO on apoptosis markers, we next examined the effects of EO administration on Caspase-3/7 activity using IncuCyte® live-cell imaging system and reagents. The NucLight reagent (Red) stains nuclei in live cells and the Caspase-3/7 reagent (Green) enables real-time quantification of cells undergoing caspase-3/7 mediated apoptosis. Our data revealed that EO-treated AMD cybrids had reduced Caspase-3/7 activity compared to their untreated counterparts. Moreover, AMD cybrids treated with EO had reduced expression levels of *Caspase-3* gene compared to untreated AMD cybrids. To our knowledge, this is the first study to report such EO effects in human AMD cybrids. However, addition of EO has been reported to decrease caspase-3 activity and to protect against arsenic-induced toxicity in thymocytes of mice [22]. Another study reported that co-treatment with EO reduced caspase-3 activity in splenocytes *in vitro* [18]. The same study used Annexin V/PI binding experiment to demonstrate that co-treatment with EO reduced the number of apoptotic and necrotic cells [18].

Enhanced production of reactive oxygen species (ROS) is associated with damaged mitochondria and deterioration of mitochondrial health and function [23]. AMD RPE transmitochondrial cybrid cells used in this study have higher levels of mitochondrial ROS compared to normal RPE transmitochondrial cells [13]. In the current study, we used H2DCFDA, a chemically reduced form of fluorescein, as an indicator of ROS in AMD cybrids and observed that EO induces a consistent ROS-reducing effect in AMD cybrids at 24 h, 48 h, and 72 h post treatment. This finding is critical since elevated ROS levels have been implicated in the pathogenesis of numerous aging-related diseases [24–26] including retinal diseases such as AMD, diabetic retinopathy, glaucoma, etc. [27]. Quantitative RT-PCR analyses revealed that treatment with EO increased the transcript levels of *SOD2*, the mitochondrial superoxide dismutase which plays an antioxidant role in preserving cellular health in AMD. [28] This is a key finding since *SOD2* deficiency contributes to oxidative damage in RPE and development of AMD pathogenesis [29]. Our current results are consistent with previous studies that have highlighted the crucial role of EO as a potential antioxidant [4,30–31] in combating oxidative stress in aging-related diseases/disorders such as diabetes, renal dysfunction, hyperlipidaemia, etc. [32–34]. Elevated ROS levels can cause VEGF (Vascular Endothelial Growth Factor) activation thereby triggering angiogenesis and subsequent choroidal neovascularization in wet AMD [35–36]. In our previous studies, we found

significant up-regulation of *VEGF* gene in AMD RPE transmitochondrial cybrid cells compared to age-matched normal RPE transmitochondrial cybrid cells (Data not shown). Interestingly, in the present study, EO decreased the *VEGF* gene levels in AMD cybrids, suggesting that EO might help in reducing VEGF-induced neovascularization in AMD. This data is consistent with reports by Lu et al. wherein an EO preparation inhibited VEGF-induced angiogenesis via suppression of VEGF receptor activity [37].

Using the JC-1 dye, we compared the mitochondrial membrane potential ($\Delta\Psi_m$) between untreated and EO-treated AMD cybrids, and found significantly higher $\Delta\Psi_m$ in EO-treated AMD cybrids. Therefore, EO can enhance the oxidative redox state of AMD cybrids, contributing to preservation of mitochondrial integrity and function in AMD cybrids. Our data were in agreement with recent studies showing that EO positively contributes to mitochondrial health by enhancing the spare respiratory capacity [16]. QRT-PCR analyses demonstrated that EO-treated AMD cybrids had significant upregulation of *PGC-1 α* (peroxisome proliferator-activated receptor gamma coactivator 1- α) gene compared to untreated AMD cybrids. *PGC-1 α* is an important regulator of mitochondrial biogenesis and its downregulation contributes to AMD pathology [38]. Moreover, *PGC-1 α* drives human RPE mitochondrial function and induces antioxidant capacity [39].

Drusen deposit formation under the retina is a characteristic feature in AMD [40]. Amyloid- β is a common protein found in retinal drusen deposits [41-42] and in the brains of patients with Alzheimer's disease [43-44]. Therefore, we tested the effects of EO on amyloid- β -induced toxicity. The AMD cybrids were pretreated with EO followed by exposure to amyloid- β peptides. The EO pretreatment rescued AMD cybrids from amyloid- β -induced cellular damage as demonstrated by higher cell viability and lower ROS levels. Similar results were observed in an *in vivo* model of Alzheimer's disease wherein oral administration of EO attenuated amyloid-induced toxicity [5].

To speculate a mechanism by which EO mediates its protective action in AMD cybrids, we measured the expression of *MT-RNR2* gene using TaqMan probes. Significant up-regulation of the MDP-coding *MT-RNR2* gene was observed in EO-treated AMD cybrids compared to the untreated cells. Since MDPs have been assigned a cytoprotective role in AMD [13-14] and other age-related diseases [45], EO-mediated cytoprotection in the AMD cybrids may be partly attributed to higher expression of the *MT-RNR2* gene. Another plausible mechanism by which EO confers its protective

effects in AMD cybrids could be via aldose reductase inhibition. It is known that tannins, which are one of the components of EO, possess aldose reductase inhibitor activity [46]. Aldose reductase, an enzyme involved in glucose metabolism, has been associated with the pathogenesis of retinal diseases including diabetic retinopathy and cataract [47-50]. Chang et al. demonstrated that overexpression of aldose reductase is associated with activation of retinal microglia in mice. Since retinal microglia are immune cells that mediate inflammatory responses in the eye, their activation causes secretion of pro-inflammatory cytokines thereby contributing to the pathogenesis of eye diseases. However, suppression of aldose reductase prevents retinal microglia activation and migration, subsequently preventing ocular inflammation and disease development [51].

In conclusion, treatment with purified EO extract preserves mitochondrial and cellular health and function in human AMD RPE cybrids, implying that EO mitigates aging-related damage in AMD. Since EO extract is an over-the-counter nutraceutical and is available in both liquid and capsule forms for easy consumption, it might serve as an effective, inexpensive, and non-invasive therapeutic option for treatment of AMD. Further studies are required to fully understand the precise mechanisms that orchestrate the protective events post EO treatment in AMD cells.

MATERIALS AND METHODS

Human Subjects

The Institutional review board of the University of California Irvine approved research with human subjects (Approval #2003-3131). All participating subjects provided informed consent and clinical investigations were performed according to the tenets of Declaration of Helsinki.

Cell culture

Human AMD RPE transmitochondrial cells were created by fusing mitochondria DNA-deficient APRE-19 (*Rho0*) cells with platelets isolated from AMD patient's blood as described previously. [13] Passage 5 cells were used for all experiments (n=3-6).

Treatment with *Emblca Officinalis* (EO)

Purified EO extract was obtained and used at a concentration of 25 mg/mL for all experiments. DMSO was used as an initial solvent. EO was subsequently dissolved in culture media for cell treatment.

Cell viability assay (MTT assay)

The numbers of viable cells were measured using the MTT (3-(4,5-dimethylthiazol-2-yl)-2,5-diphenyltetrazolium bromide) assay (Cat.# 30006, Biotium, Fremont, CA). Cells were plated in 96-well tissue culture plates and treated with 25 mg/mL EO for 24 h and 48 h. Cells were incubated with MTT reagent at 37 °C for 1 h, followed by addition of DMSO. Signal absorbance was measured at 570 nm and background absorbance was measured at 630 nm. Normalized absorbance values were obtained by subtracting background absorbance from signal absorbance. The colorimetric signal obtained was proportional to the cell number.

IncuCyte Live-cell imaging

The IncuCyte NuLight Rapid Red Reagent (Cat.# 4717, IncuCyte, Ann Arbor, MI) is a cell permeable DNA stain that specifically stains nuclei in live cells and enables real-time quantification of cell proliferation.

The IncuCyte Caspase-3/7 Green Apoptosis Reagent (Cat.# 4440, IncuCyte) couples the activated Caspase-3/7 recognition motif (DEVD) to a DNA intercalating dye and enables real-time quantification of cells undergoing caspase-3/7 mediated apoptosis. This reagent is an inert, non-fluorescent substrate which when added to culture medium, crosses the cell membrane where it is cleaved by activated caspase-3/7 resulting in the release of the DNA dye and fluorescent staining of the nuclear DNA.

Cells were seeded in 96-well plates at a density of 5000 – 10,000 cells/well, treated with EO, followed by staining with IncuCyte® NuLight Rapid Red (1:500) and Caspase-3/7 Green (1:1000) labeling reagents. Stained cell plates were placed into the IncuCyte® live-cell analysis system and allowed to warm to 37 °C for 30 min prior to scanning. Phase Contrast, Green, and Red channels were selected, 5 images were taken per well with an average scan interval of ~2 h until the experiment was complete. Fluorescent objects were quantified using the IncuCyte® integrated analysis software that minimizes background fluorescence.

Reactive Oxygen Species (ROS) assay

To quantitate ROS levels, the cell-permeant H2DCFDA (2', 7'-dichlorodihydrofluorescein diacetate) was used as an indicator for ROS in cells. Stock solution of 5mM H2DCFDA was prepared in DMSO. Stock solution was then diluted in DPBS to obtain a working concentration of 10 μM. Cells were plated in 96-well tissue culture plates followed by treatment with 25 mg/mL EO. 10

μM H2DCFDA solution was added to cells and incubated for 30 min at 37 °C. H2DCFDA was then replaced with DPBS. Fluorescence which was measured at excitation 4924 nm and emission 520 nm was proportional to ROS levels in cells.

Mitochondrial membrane potential (JC-1) assay

The JC-1 assay (Cat.# 30001-T, Biotium) uses a unique cationic dye i.e., 5,5',6,6'-tetrachloro-1,1',3,3'- tetraethylbenzimidazolylcarbocyanine iodide, to detect loss of mitochondrial membrane potential. JC-1 1X reagent was prepared by diluting 100X JC-1 reagent in assay buffer to 1:100 dilutions. Cells were plated in 24-well tissue culture plates followed by treatment with 25 mg/mL EO. 1X JC-1 reagent was added to cells and incubated for 15 min at 37 °C. JC-1 reagent in the wells was then replaced with DPBS and fluorescence was measured as follows: Red fluorescence (Live cells): Excitation 550 nm and Emission 600 nm; Green fluorescence (Apoptotic cells): Excitation 485 nm and Emission 535 nm. Ratio of Red/Green was used for analysis. Lower ratio corresponded to higher apoptotic/dead cell number.

Quantitative Real-Time PCR

RNA extraction, cDNA synthesis, and qRT-PCR analysis from EO-treated AMD cybrids were performed as described previously. [14] QuantiTect Primer Assays were used to study the expression of *Caspase-3* gene (Cat. # QT00023947, Qiagen, Germantown, MD), and *SOD2* gene (Cat. # QT01008693, Qiagen). KiCqStart® SYBR® green primers were used to examine the expression of *PGC-1α* and *VEGF* genes (Cat. # kspq12012, Sigma, St. Louis, MO). Specific housekeeper genes used were *HPRT1* (Cat. # QT00059066, Qiagen) and *HMBS* (Cat. # QT00014462). TaqMan gene expression master mix (Cat. # 4369016, Life Technologies) and TaqMan gene expression assays were used to examine the expression of the *MT-RNR2* gene (Assay ID: Hs02596860_s1, Life Technologies), for which *GAPDH* (Assay ID: Hs02786624_g1, Life Technologies) was used as a housekeeper gene. Data analysis was performed using $\Delta\Delta C_t$ method which was calculated by subtracting ΔC_t of the AMD group from ΔC_t of the normal group. ΔC_t was the difference between the C_t s (threshold cycles) of the target gene and C_t s of the housekeeper gene (reference gene). Fold change was calculated using the following formula: Fold change = $2^{\Delta\Delta C_t}$.

Statistical analysis

Non-parametric Mann-Whitney test (for 2 groups) or one-way ANOVA (for 3 or more groups) followed by

post-hoc Tukey–Kramer test (GraphPad Prism 5.0; GraphPad Software, CA, USA) were performed to analyze data between groups. P values < 0.05 were considered statistically significant.

AUTHOR CONTRIBUTIONS

S.N.: Designed and performed the experiments; acquired, analyzed, and interpreted data; wrote and edited the manuscript. R.K. and G.S.: Provided EO extract. M.C.K. and A.B.N.: Reviewed data and the manuscript. M.C.K., A.B.N., and B.D.K.: contributed reagents/materials/analysis tools.

CONFLICTS OF INTEREST

S.N.: none; R.K.: none; A.B.N.: none; G.S.: Nisarga Biotech Pvt Ltd.; B.D.K.: Clinical research: Alcon, Allergan, Apellis, Genentech, G.S.K. Ophthotech, Regeneron; Consultant: Alcon, Allergan, Catalyst, Genentech, Novartis, Ophthotech, Regeneron; Recipient: Allergan, Genentech, Novartis, Regeneron. M.C.K.: none

FUNDING

This research work was supported by the 2017 Genentech/ARVO AMD Translational Research Fellowship, RPB (Research to Prevent Blindness) pilot research grant, Arnold and Mabel Beckman Foundation, UCI School of Medicine, Discovery Eye Foundation, Guenther Foundation, Beckman Initiative for Macular Research, Polly and Michael Smith Foundation, Max Factor Family Foundation, Iris and B. Gerald Cantor Foundation; research was supported in part by an unrestricted grant from RPB. SN is a recipient of the 2017 Genentech/ARVO AMD Translational Research Fellowship and the 2016 RPB pilot research grant.

REFERENCES

- Hasan R, Islam N, Islam R. Phytochemistry, pharmacological activities and traditional uses of *Emblica officinalis*: A review. *Int Curr Pharm J*. 2016; 5:14–21. <https://doi.org/10.3329/icpj.v5i2.26441>
- Agte V, Bhute R, Pathare P, Nilegaonkar S. Factors Influencing the Antioxidant Potential of Amla and Its Products. *Br J Pharm Res*. 2014; 4:2575–84. <https://doi.org/10.9734/BJPR/2014/6643>
- Middha SK, Goyal AK, Lokesh P, Yardi V, Mojamdar L, Keni DS, Babu D, Usha T. Toxicological Evaluation of *Emblica officinalis* Fruit Extract and its Anti-inflammatory and Free Radical Scavenging Properties. *Pharmacogn Mag*. 2015 (Suppl 3); 11:S427–33. <https://doi.org/10.4103/0973-1296.168982>
- Carlsen MH, Halvorsen BL, Holte K, Bøhn SK, Dragland S, Sampson L, Willey C, Senoo H, Umezono Y, Sanada C, Barikmo I, Berhe N, Willett WC, et al. The total antioxidant content of more than 3100 foods, beverages, spices, herbs and supplements used worldwide. *Nutr J*. 2010; 9:3. <https://doi.org/10.1186/1475-2891-9-3>
- Justin Thenmozhi A, Dhivyabharathi M, William Raja TR, Manivasagam T, Essa MM. Tannoid principles of *Emblica officinalis* renovate cognitive deficits and attenuate amyloid pathologies against aluminum chloride induced rat model of Alzheimer’s disease. *Nutr Neurosci*. 2016; 19:269–78. <https://doi.org/10.1179/1476830515Y.0000000016>
- Akhtar MS, Ramzan A, Ali A, Ahmad M. Effect of Amla fruit (*Emblica officinalis* Gaertn.) on blood glucose and lipid profile of normal subjects and type 2 diabetic patients. *Int J Food Sci Nutr*. 2011; 62:609–16. <https://doi.org/10.3109/09637486.2011.560565>
- Kanthe PS, Patil BS, Bagali SC, Reddy RC, Aithala MR, Das KK. Protective effects of Ethanolic Extract of *Emblica officinalis* (amla) on Cardiovascular Pathophysiology of Rats, Fed with High Fat Diet. *J Clin Diagn Res*. 2017; 11:CC05–09. <https://doi.org/10.7860/JCDR/2017/28474.10628>
- Golechha M, Sarangal V, Ojha S, Bhatia J, Arya DS. Anti-Inflammatory Effect of *Emblica officinalis* in Rodent Models of Acute and Chronic Inflammation: Involvement of Possible Mechanisms. *Int J Inflam*. 2014; 2014:178408. <https://doi.org/10.1155/2014/178408>
- Thilakchand KR, Mathai RT, Simon P, Ravi RT, Baliga-Rao MP, Baliga MS. Hepatoprotective properties of the Indian gooseberry (*Emblica officinalis* Gaertn): a review. *Food Funct*. 2013; 4:1431–41. <https://doi.org/10.1039/c3fo60237k>
- Ngamkitidechakul C, Jaijoy K, Hansakul P, Soonthornchareonnon N, Sireeratawong S. Antitumour effects of *Phyllanthus emblica* L.: induction of cancer cell apoptosis and inhibition of in vivo tumour promotion and in vitro invasion of human cancer cells. *Phytother Res*. 2010; 24:1405–13. <https://doi.org/10.1002/ptr.3127>
- Tahir I, Khan MR, Shah NA, Aftab M. Evaluation of phytochemicals, antioxidant activity and amelioration of pulmonary fibrosis with *Phyllanthus emblica* leaves. *BMC Complement Altern Med*. 2016; 16:406. <https://doi.org/10.1186/s12906-016-1387-3>
- Nashine S, Chwa M, Kazemian M, Thaker K, Lu S, Nesburn A, Kuppermann BD, Kenney MC. Differential Expression of Complement Markers in Normal and

- AMD Transmitochondrial Cybrids. *PLoS One*. 2016; 11:e0159828. <https://doi.org/10.1371/journal.pone.0159828>
13. Nashine S, Cohen P, Chwa M, Lu S, Nesburn AB, Kuppermann BD, Kenney MC, Humanin G. Humanin G (HNG) protects age-related macular degeneration (AMD) transmitochondrial ARPE-19 cybrids from mitochondrial and cellular damage. *Cell Death Dis*. 2017; 8:e2951. <https://doi.org/10.1038/cddis.2017.348>
 14. Nashine S, Cohen P, Nesburn AB, Kuppermann BD, Kenney MC. Characterizing the protective effects of SHLP2, a mitochondrial-derived peptide, in macular degeneration. *Sci Rep*. 2018; 8:15175. <https://doi.org/10.1038/s41598-018-33290-5>
 15. Rao TP, Okamoto T, Akita N, Hayashi T, Kato-Yasuda N, Suzuki K. Amla (*Emblica officinalis* Gaertn.) extract inhibits lipopolysaccharide-induced procoagulant and pro-inflammatory factors in cultured vascular endothelial cells. *Br J Nutr*. 2013; 110:2201–06. <https://doi.org/10.1017/S0007114513001669>
 16. Yamamoto H, Morino K, Mengistu L, Ishibashi T, Kiriyaama K, Ikami T, Maegawa H. Amla Enhances Mitochondrial Spare Respiratory Capacity by Increasing Mitochondrial Biogenesis and Antioxidant Systems in a Murine Skeletal Muscle Cell Line. *Oxid Med Cell Longev*. 2016; 2016:1735841. <https://doi.org/10.1155/2016/1735841>
 17. Lim DW, Kim JG, Kim YT. Analgesic Effect of Indian Gooseberry (*Emblica officinalis* Fruit) Extracts on Postoperative and Neuropathic Pain in Rats. *Nutrients*. 2016; 8:E760. <https://doi.org/10.3390/nu8120760>
 18. Singh MK, Yadav SS, Yadav RS, Singh US, Shukla Y, Pant KK, Khattri S. Efficacy of crude extract of *Emblica officinalis* (amla) in arsenic-induced oxidative damage and apoptosis in splenocytes of mice. *Toxicol Int*. 2014; 21:8–17. <https://doi.org/10.4103/0971-6580.128784>
 19. Sai Ram M, Neetu D, Deepti P, Vandana M, Ilavazhagan G, Kumar D, Selvamurthy W. Cyto-protective activity of Amla (*Emblica officinalis*) against chromium (VI) induced oxidative injury in murine macrophages. *Phytother Res*. 2003; 17:430–33. <https://doi.org/10.1002/ptr.1157>
 20. Sai Ram M, Neetu D, Yogesh B, Anju B, Dipti P, Pauline T, Sharma SK, Sarada SK, Ilavazhagan G, Kumar D, Selvamurthy W. Cyto-protective and immunomodulating properties of Amla (*Emblica officinalis*) on lymphocytes: an in-vitro study. *J Ethnopharmacol*. 2002; 81:5–10. [https://doi.org/10.1016/S0378-8741\(01\)00421-4](https://doi.org/10.1016/S0378-8741(01)00421-4)
 21. Joshi S, Thatte U, and Shirish Joshi and Urmila Thatte. Pharmacological evaluation of cytoprotective potential of *Phyllanthus Emblica* (PE) and *Asparagus Racemosus* (AR) in preventing gastric erosions, ulcerations and inflammation induced in rats. *Natl J Physiol Pharm Pharmacol*. 2012; 2:172–78. <https://doi.org/10.5455/njppp.2012.2.172-178>
 22. Singh MK, Yadav SS, Gupta V, Khattri S. Immunomodulatory role of *Emblica officinalis* in arsenic induced oxidative damage and apoptosis in thymocytes of mice. *BMC Complement Altern Med*. 2013; 13:193. <https://doi.org/10.1186/1472-6882-13-193>
 23. Wang W, Gong G, Wang X, Wei-LaPierre L, Cheng H, Dirksen R, Sheu SS. Mitochondrial Flash: Integrative Reactive Oxygen Species and pH Signals in Cell and Organelle Biology. *Antioxid Redox Signal*. 2016; 25:534–49. <https://doi.org/10.1089/ars.2016.6739>
 24. Chandrasekaran A, Idelchik MD, Melendez JA. Redox control of senescence and age-related disease. *Redox Biol*. 2017; 11:91–102. <https://doi.org/10.1016/j.redox.2016.11.005>
 25. Jacob KD, Noren Hooten N, Trzeciak AR, Evans MK. Markers of oxidant stress that are clinically relevant in aging and age-related disease. *Mech Ageing Dev*. 2013; 134:139–57. <https://doi.org/10.1016/j.mad.2013.02.008>
 26. De la Fuente M, Miquel J. An update of the oxidation-inflammation theory of aging: the involvement of the immune system in oxi-inflamm-aging. *Curr Pharm Des*. 2009; 15:3003–26. <https://doi.org/10.2174/138161209789058110>
 27. Jarrett SG, Boulton ME. Consequences of oxidative stress in age-related macular degeneration. *Mol Aspects Med*. 2012; 33:399–417. <https://doi.org/10.1016/j.mam.2012.03.009>
 28. Kasahara E, Lin LR, Ho YS, Reddy VN. SOD2 protects against oxidation-induced apoptosis in mouse retinal pigment epithelium: implications for age-related macular degeneration. *Invest Ophthalmol Vis Sci*. 2005; 46:3426–34. <https://doi.org/10.1167/iovs.05-0344>
 29. Justilien V, Pang JJ, Renganathan K, Zhan X, Crabb JW, Kim SR, Sparrow JR, Hauswirth WW, Lewin AS. SOD2 knockdown mouse model of early AMD. *Invest Ophthalmol Vis Sci*. 2007; 48:4407–20. <https://doi.org/10.1167/iovs.07-0432>
 30. Kumari P, Khatkar BS. Assessment of total polyphenols, antioxidants and antimicrobial properties of aonla varieties. *J Food Sci Technol*. 2016; 53:3093–103. <https://doi.org/10.1007/s13197-016-2282-0>

31. Charoenteeraboon J, Wongnoppavich A, Soonthornchareonnon N, Jaijoy K, Sireeratawong S. Antioxidant activities of the standardized water extract from fruit of *Phyllanthus emblica* Linn. *Songklanakarin J Sci Technol*. 2010; 32:599–604.
32. Rao TP, Sakaguchi N, Juneja LR, Wada E, Yokozawa T. Amla (*Emblica officinalis* Gaertn.) extracts reduce oxidative stress in streptozotocin-induced diabetic rats. *J Med Food*. 2005; 8:362–68. <https://doi.org/10.1089/jmf.2005.8.362>
33. Yokozawa T, Kim HY, Kim HJ, Tanaka T, Sugino H, Okubo T, Chu DC, Juneja LR. Amla (*Emblica officinalis* Gaertn.) attenuates age-related renal dysfunction by oxidative stress. *J Agric Food Chem*. 2007; 55:7744–52. <https://doi.org/10.1021/jf072105s>
34. Yokozawa T, Kim HY, Kim HJ, Okubo T, Chu DC, Juneja LR. Amla (*Emblica officinalis* Gaertn.) prevents dyslipidaemia and oxidative stress in the ageing process. *Br J Nutr*. 2007; 97:1187–95. <https://doi.org/10.1017/S0007114507691971>
35. Schlingemann RO. Role of growth factors and the wound healing response in age-related macular degeneration. *Graefes Arch Clin Exp Ophthalmol*. 2004; 242:91–101. <https://doi.org/10.1007/s00417-003-0828-0>
36. Martin G, Schlunck G, Hansen LL, Agostini HT. Differential expression of angioregulatory factors in normal and CNV-derived human retinal pigment epithelium. *Graefes Arch Clin Exp Ophthalmol*. 2004; 242:321–26. <https://doi.org/10.1007/s00417-003-0838-y>
37. Lu K, Chakroborty D, Sarkar C, Lu T, Xie Z, Liu Z, Basu S. Triphala and its active constituent chebulinic acid are natural inhibitors of vascular endothelial growth factor- α mediated angiogenesis. *PLoS One*. 2012; 7:e43934. <https://doi.org/10.1371/journal.pone.0043934>
38. Kaarniranta K, Kajdanek J, Morawiec J, Pawlowska E, Blasiak J. PGC-1 α Protects RPE Cells of the Aging Retina against Oxidative Stress-Induced Degeneration through the Regulation of Senescence and Mitochondrial Quality Control. The Significance for AMD Pathogenesis. *Int J Mol Sci*. 2018; 19:E2317. <https://doi.org/10.3390/ijms19082317>
39. Iacovelli J, Rowe GC, Khadka A, Diaz-Aguilar D, Spencer C, Arany Z, Saint-Geniez M. PGC-1 α Induces Human RPE Oxidative Metabolism and Antioxidant Capacity. *Invest Ophthalmol Vis Sci*. 2016; 57:1038–51. <https://doi.org/10.1167/iovs.15-17758>
40. Schlanitz FG, Sacu S, Baumann B, Bolz M, Platzer M, Pircher M, Hitznerberger CK, Schmidt-Erfurth U. Identification of Drusen Characteristics in Age-Related Macular Degeneration by Polarization-Sensitive Optical Coherence Tomography. *Am J Ophthalmol*. 2015; 160:335–344.e1. <https://doi.org/10.1016/j.ajo.2015.05.008>
41. Crabb JW, Miyagi M, Gu X, Shadrach K, West KA, Sakaguchi H, Kamei M, Hasan A, Yan L, Rayborn ME, Salomon RG, Hollyfield JG. Drusen proteome analysis: an approach to the etiology of age-related macular degeneration. *Proc Natl Acad Sci USA*. 2002; 99:14682–87. <https://doi.org/10.1073/pnas.222551899>
42. Spaide RF, Curcio CA. Drusen characterization with multimodal imaging. *Retina*. 2010; 30:1441–54. <https://doi.org/10.1097/IAE.0b013e3181ee5ce8>
43. Allsop D, Mayes J. Amyloid β -peptide and Alzheimer's disease. *Essays Biochem*. 2014; 56:99–110. <https://doi.org/10.1042/bse0560099>
44. Murphy MP, LeVine H 3rd. Alzheimer's disease and the amyloid-beta peptide. *J Alzheimers Dis*. 2010; 19:311–23. <https://doi.org/10.3233/JAD-2010-1221>
45. Gong Z, Tas E, Muzumdar R. Humanin and age-related diseases: a new link? *Front Endocrinol (Lausanne)*. 2014; 5:210. <https://doi.org/10.3389/fendo.2014.00210>
46. Suryanarayana P, Kumar PA, Saraswat M, Petrash JM, Reddy GB. Inhibition of aldose reductase by tannoid principles of *Emblica officinalis*: implications for the prevention of sugar cataract. *Mol Vis*. 2004; 10:148–54.
47. Vineros SA, Campochiaro PA, Williams EH, May EE, Green WR, Sorenson RL. Aldose reductase expression in human diabetic retina and retinal pigment epithelium. *Diabetes*. 1988; 37:1658–64. <https://doi.org/10.2337/diab.37.12.1658>
48. Kinoshita JH, Fukushi S, Kador P, Merola LO. Aldose reductase in diabetic complications of the eye. *Metabolism*. 1979 (Suppl 1); 28:462–69.
49. Yadav UC, Srivastava SK, Ramana KV. Understanding the role of aldose reductase in ocular inflammation. *Curr Mol Med*. 2010; 10:540–49.
50. Snow A, Shieh B, Chang KC, Pal A, Lenhart P, Ammar D, Ruzycski P, Palla S, Reddy GB, Petrash JM. Aldose reductase expression as a risk factor for cataract. *Chem Biol Interact*. 2015; 234:247–53. <https://doi.org/10.1016/j.cbi.2014.12.017>
51. Chang KC, Shieh B, Petrash JM. Aldose reductase mediates retinal microglia activation. *Biochem Biophys Res Commun*. 2016; 473:565–71. <https://doi.org/10.1016/j.bbrc.2016.03.122>