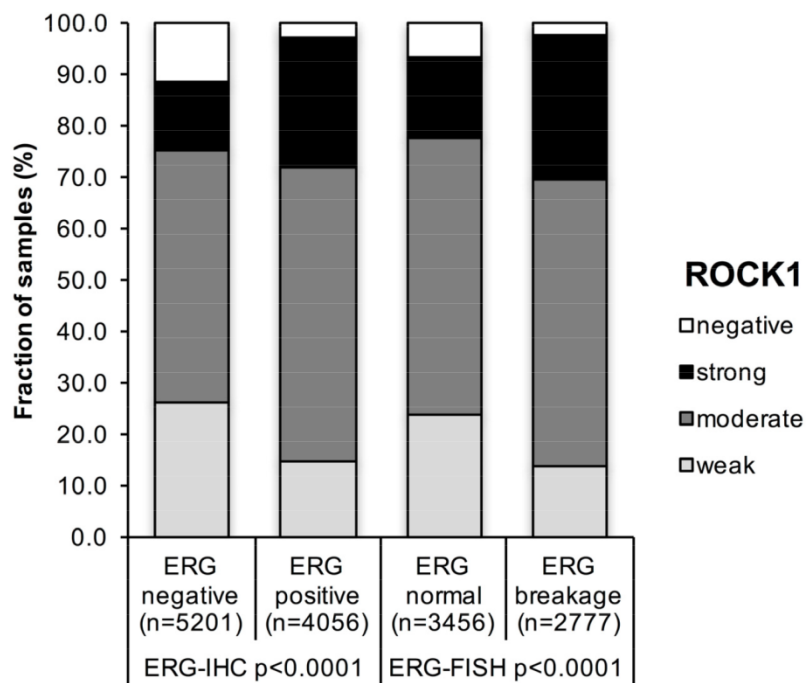
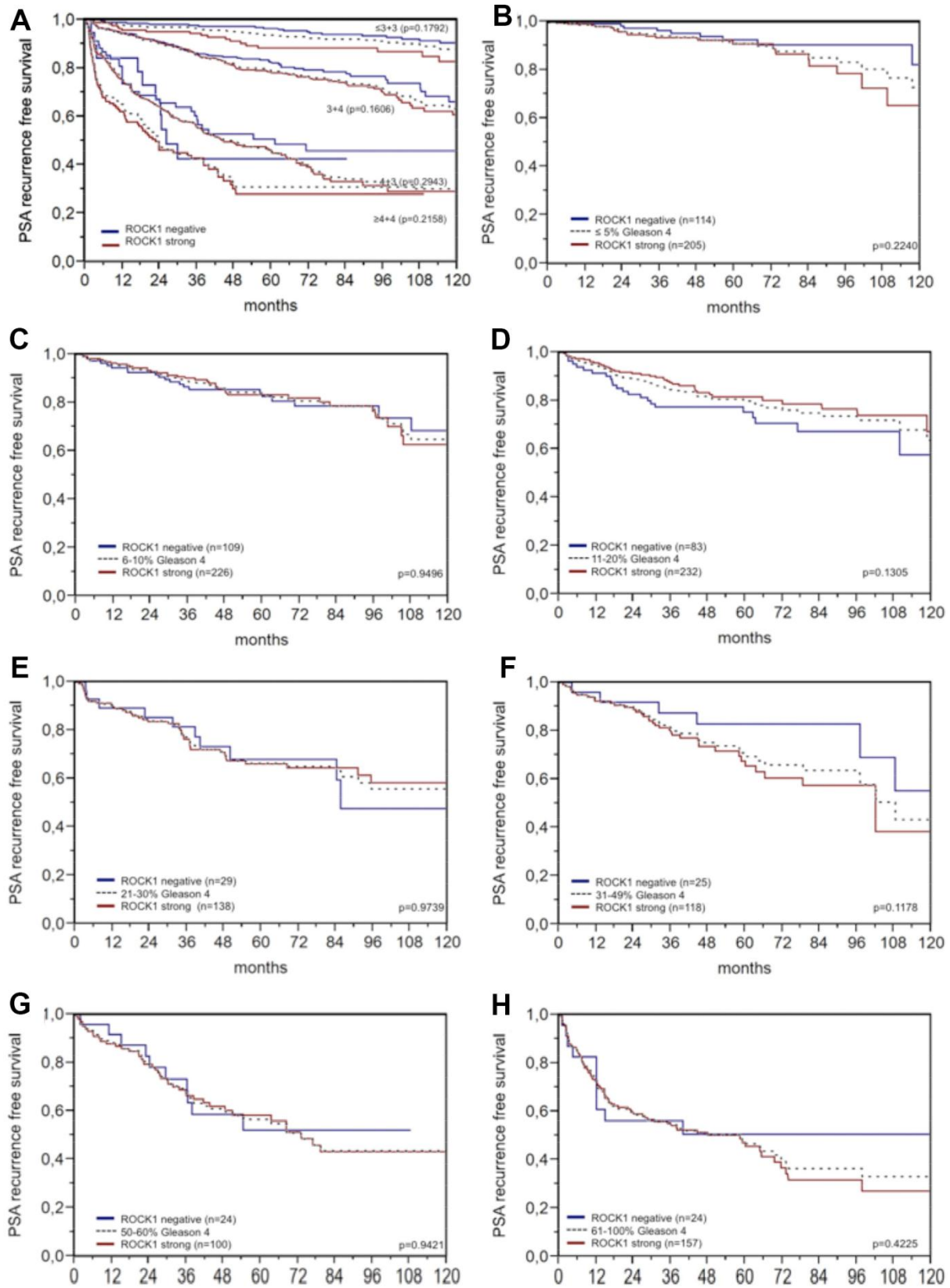


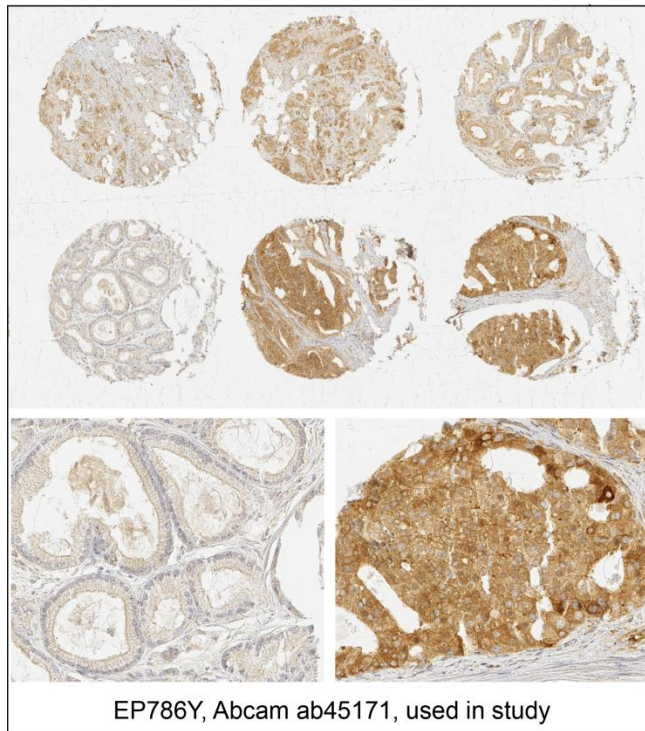
**SUPPLEMENTARY FIGURES**



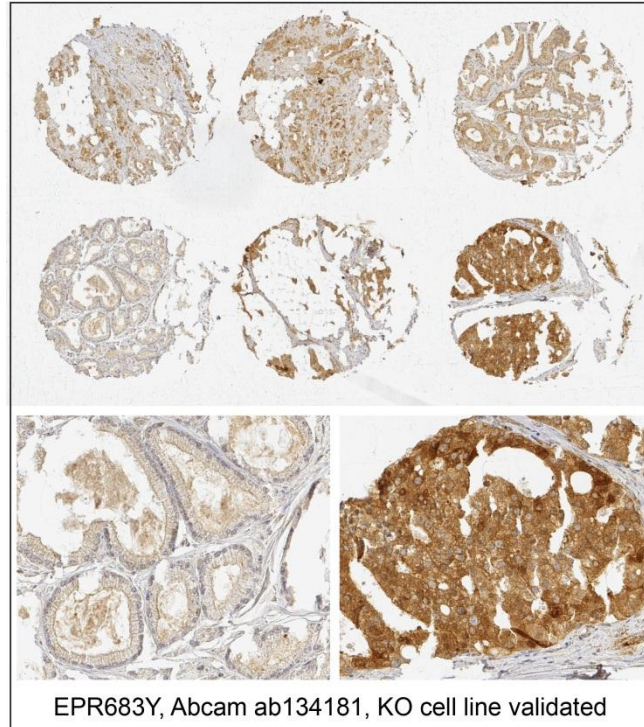
**Supplementary Figure 1. Association between positive ROCK1 staining and ERG-status (IHC/FISH).**



**Supplementary Figure 2.** Association between ROCK1 expression (negative versus strong) and biochemical recurrence in (A) classic Gleason grade, (B)  $\le 5\%$  Gleason 4, (C) 6–10% Gleason 4, (D) 11–20% Gleason 4, (E) 21–30% Gleason 4, (F) 31–49% Gleason 4, (G) 50–60% Gleason 4, and (H)  $\ge 61\%$  Gleason 4 pattern.



**Supplementary Figure 3A. Examples of immunostainings using anti-Rock1 antibody EP786Y that was used in the current study.**



**Supplementary Figure 3B. Examples of immunostainings using anti-Rock1 antibody EPR683Y. Note the identical staining pattern as compared to EP786Y (Supplementary Figure 3A). Specificity of EPR683Y was validated by analysis of wildtype and ROCK1 knock out cells.**