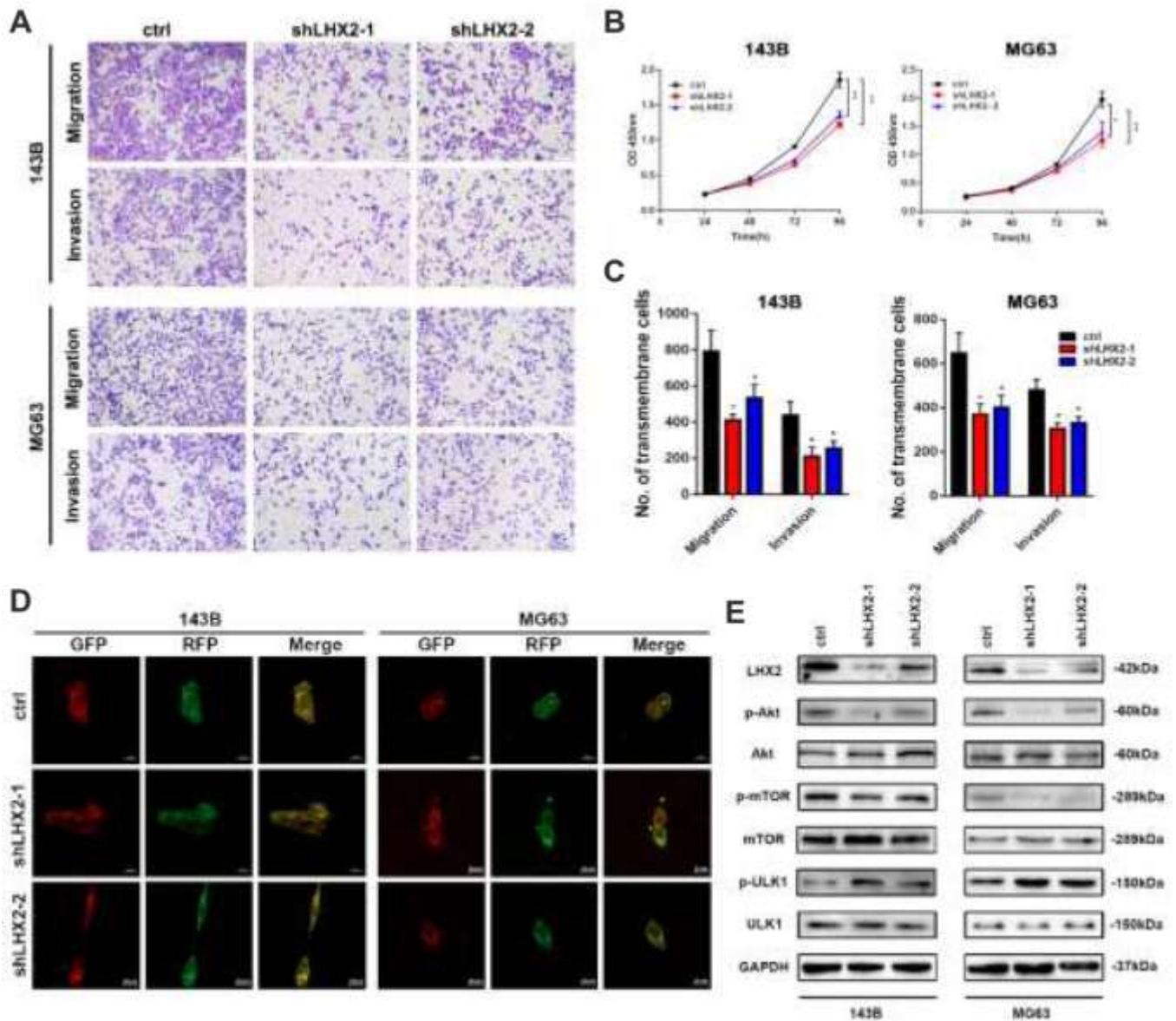


SUPPLEMENTARY FIGURE



Supplementary Figure 1. LHX2 silence inhibits the OS malignancy and enhances autophagy via mTOR. (A–C) Transwell migration, invasion, and CCK8 assays were carried out to detect the malignancy in 143B and MG63 cells transfected with shLHX2-1, shLHX2-2 and control group. Significant differences were determined using unpaired Student’s t test. *P < 0.05, **P < 0.01. Scale bar: 100 μm. (D) 143B and MG63 cells transfected with shLHX2-1, shLHX2-2 and control group were scoped by confocal. Red puncta: autolysosomes; Yellow puncta: autophagosomes. Scale bar: 20 μm. (E) Western blots of LHX2, p-Akt (Ser473), Akt, p-mTOR (Ser2448), mTOR, p-ULK1 (Ser757), ULK1 in 143B and MG63 cells transfected with shLHX2-1, shLHX2-2 and control group. GAPDH was used as endogenous control.