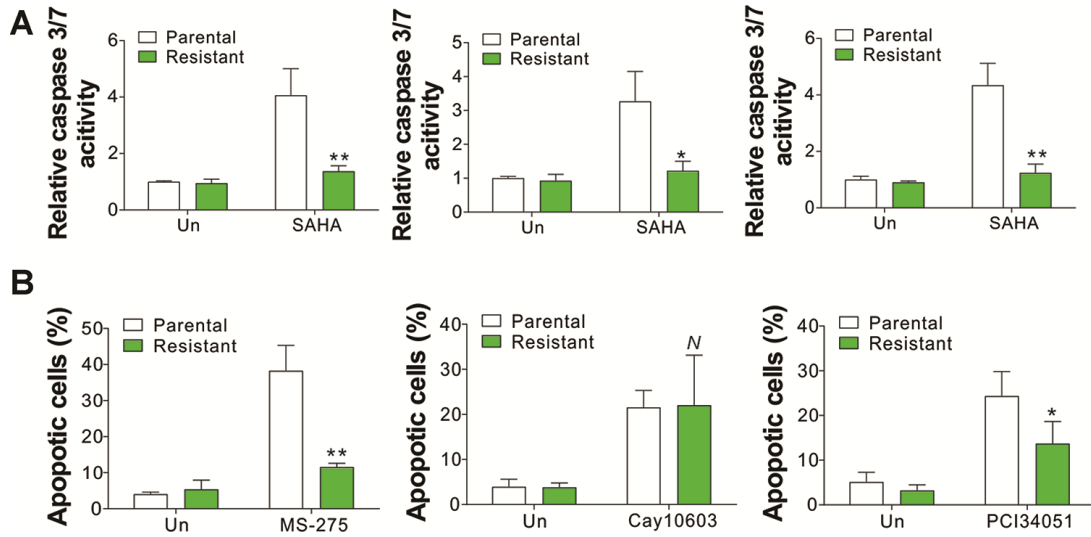
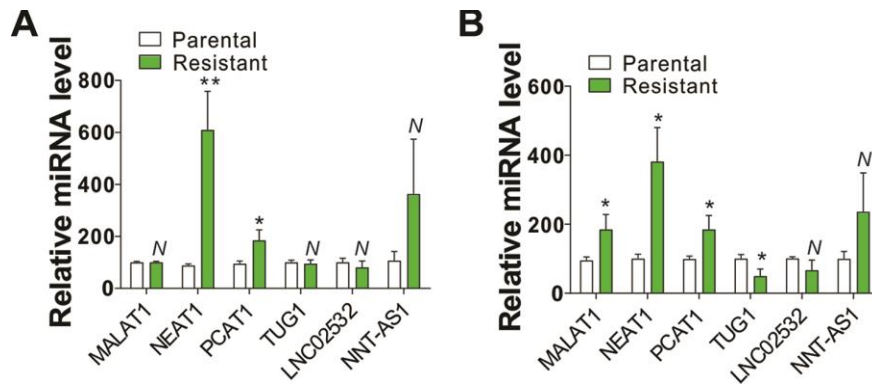


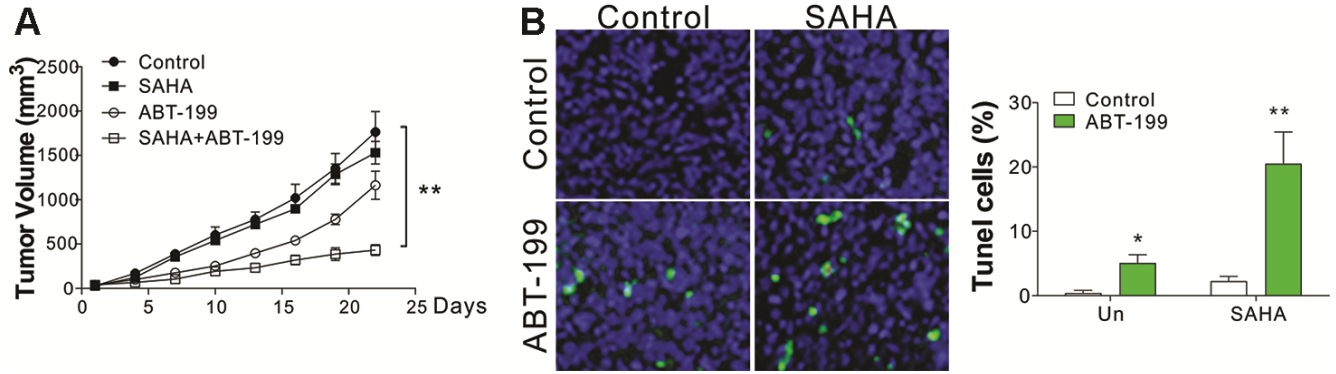
SUPPLEMENTARY FIGURES



Supplementary Figure 1. Less apoptosis was induced the SAHA resistant NPC cells. (A) The caspase-3/7 activity in parental and SAHA-tolerant cells subjected to 4 $\mu\text{mol/L}$ of SAHA for 24 h. (B) The apoptosis of parental and SAHA-tolerant C666-1 cells subjected to 2.5 $\mu\text{mol/L}$ of MS-275, 4 nmol/L of Cay10603, or 10 $\mu\text{mol/L}$ of PCI34051 for 24 h. Each experiment was performed for 3 times. N, $p>0.05$; *, $p<0.05$; **, $p<0.01$.



Supplementary Figure 2. NEAT1 expression was induced in SAHA resistant NPC cells. (A) The expression of indicated LncRNA in CNE-1 parental and resistant cells. (B) The expression of indicated LncRNA in CNE-2 parental and resistant cells. Each experiment was performed for 3 times. N, $p>0.05$; *, $p<0.05$; **, $p<0.01$.



Supplementary Figure 3. ABT-199 enhanced the killing effect of SAHA *in vivo*. (A) The tumor growth curves of nude mice xenografted with C666-1R cells and treated with SAHA and/or ABT-199. (B) The TUNEL staining of tumors in each group. *, $p < 0.05$; **, $p < 0.01$.