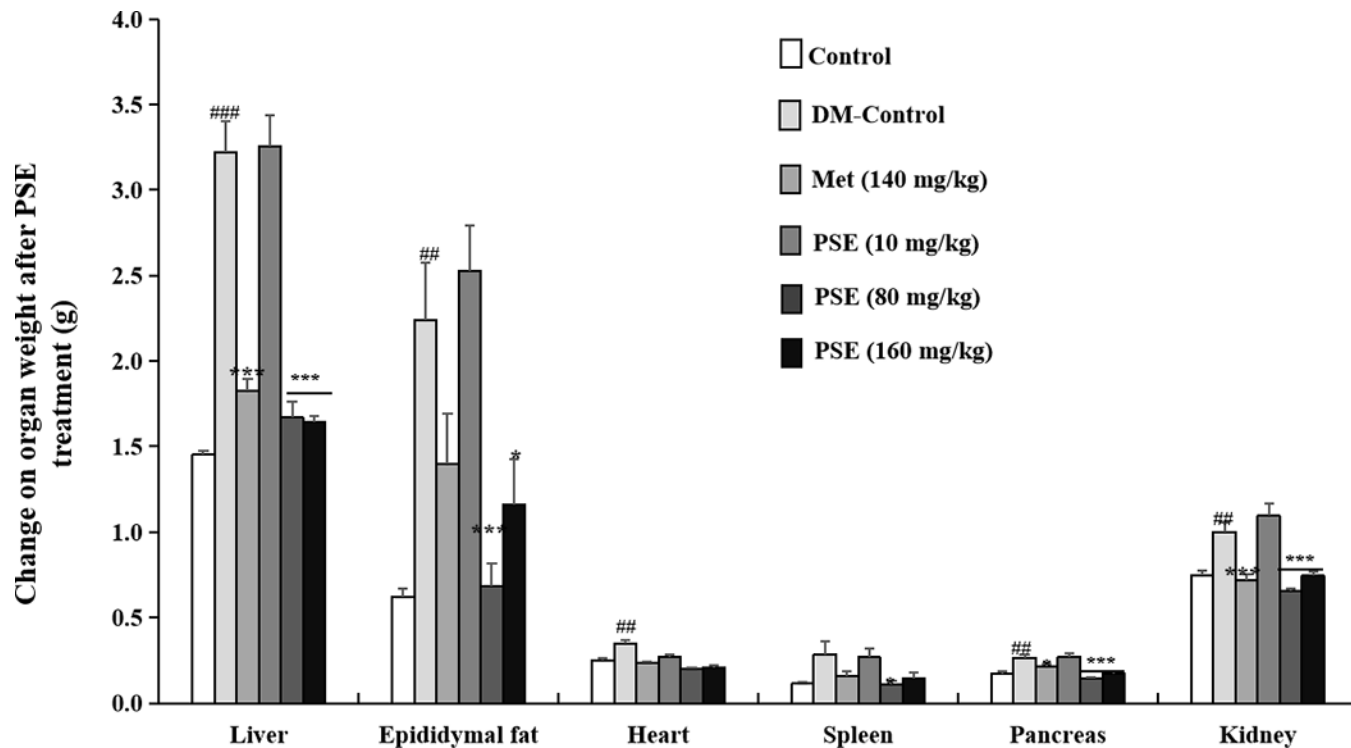
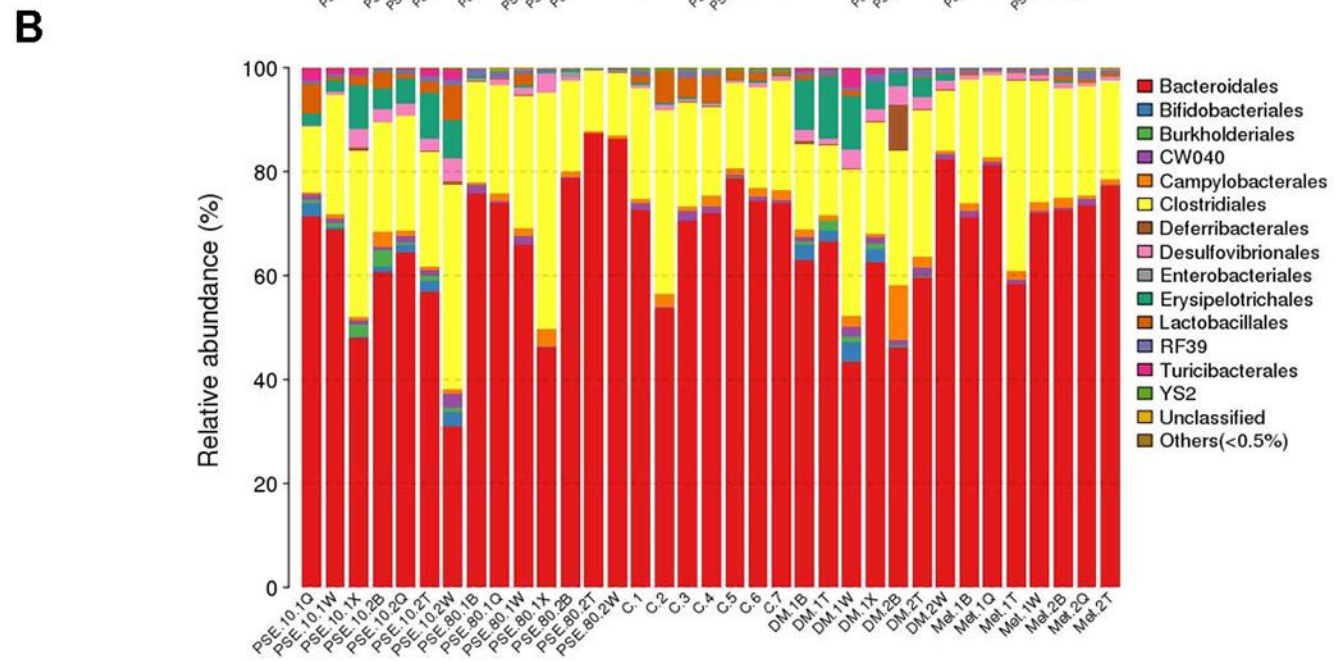
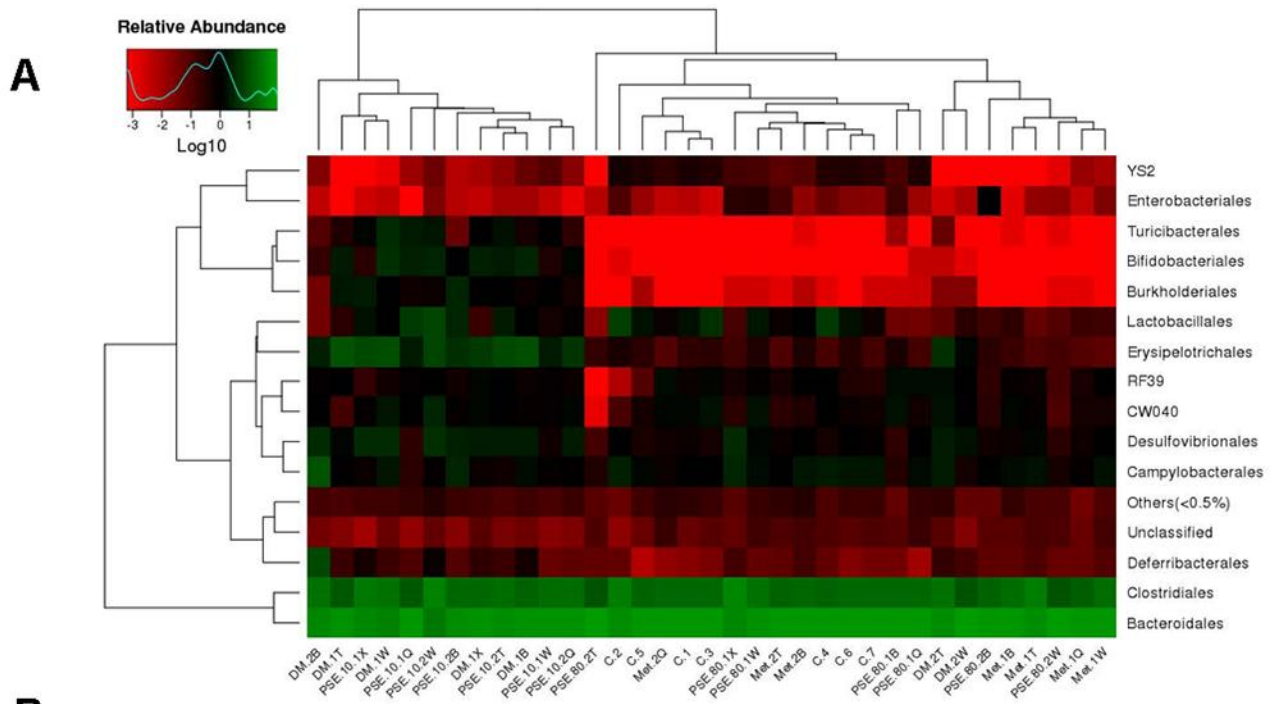


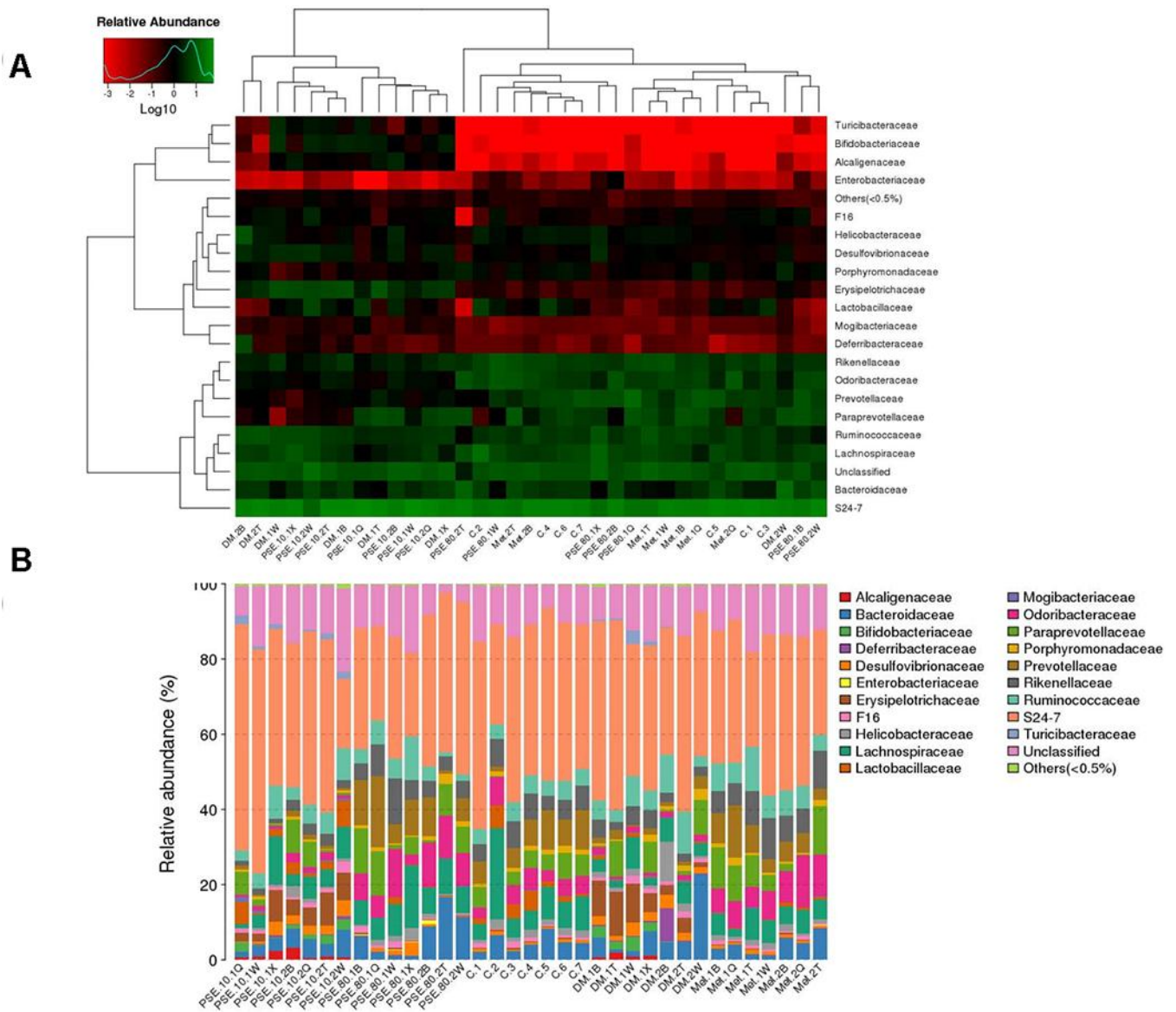
SUPPLEMENTARY FIGURES



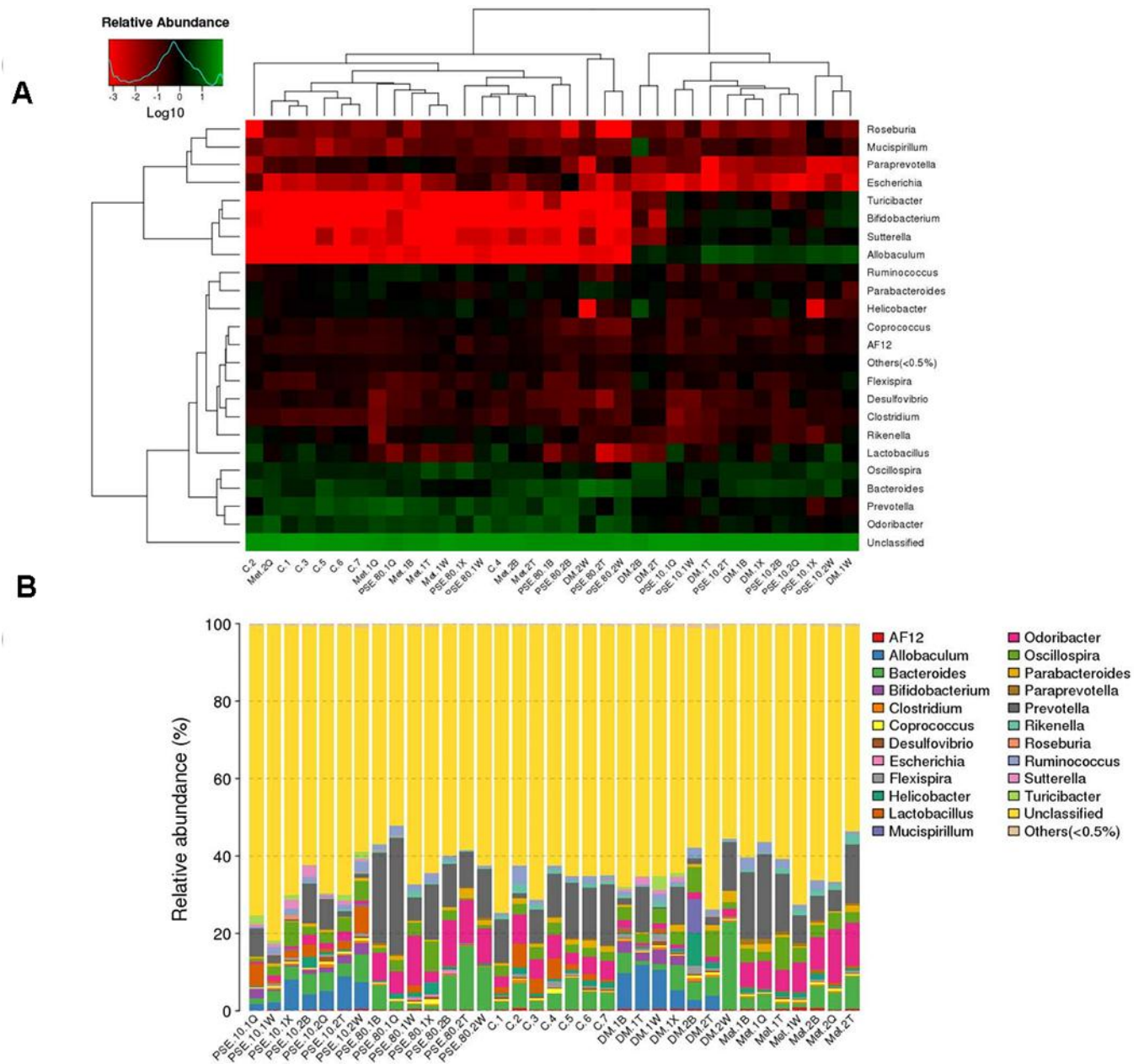
Supplementary Figure 1. Effect of PSE on the organs weight of type 2 diabetic mice. Each value was expressed as the mean \pm SEM of 10 mice. ## and ### represent significant difference comparison with the control group at $p < 0.01$ and $p < 0.001$. * and *** indicate significant difference comparison with the DM-C group at $p < 0.05$, and $p < 0.001$.



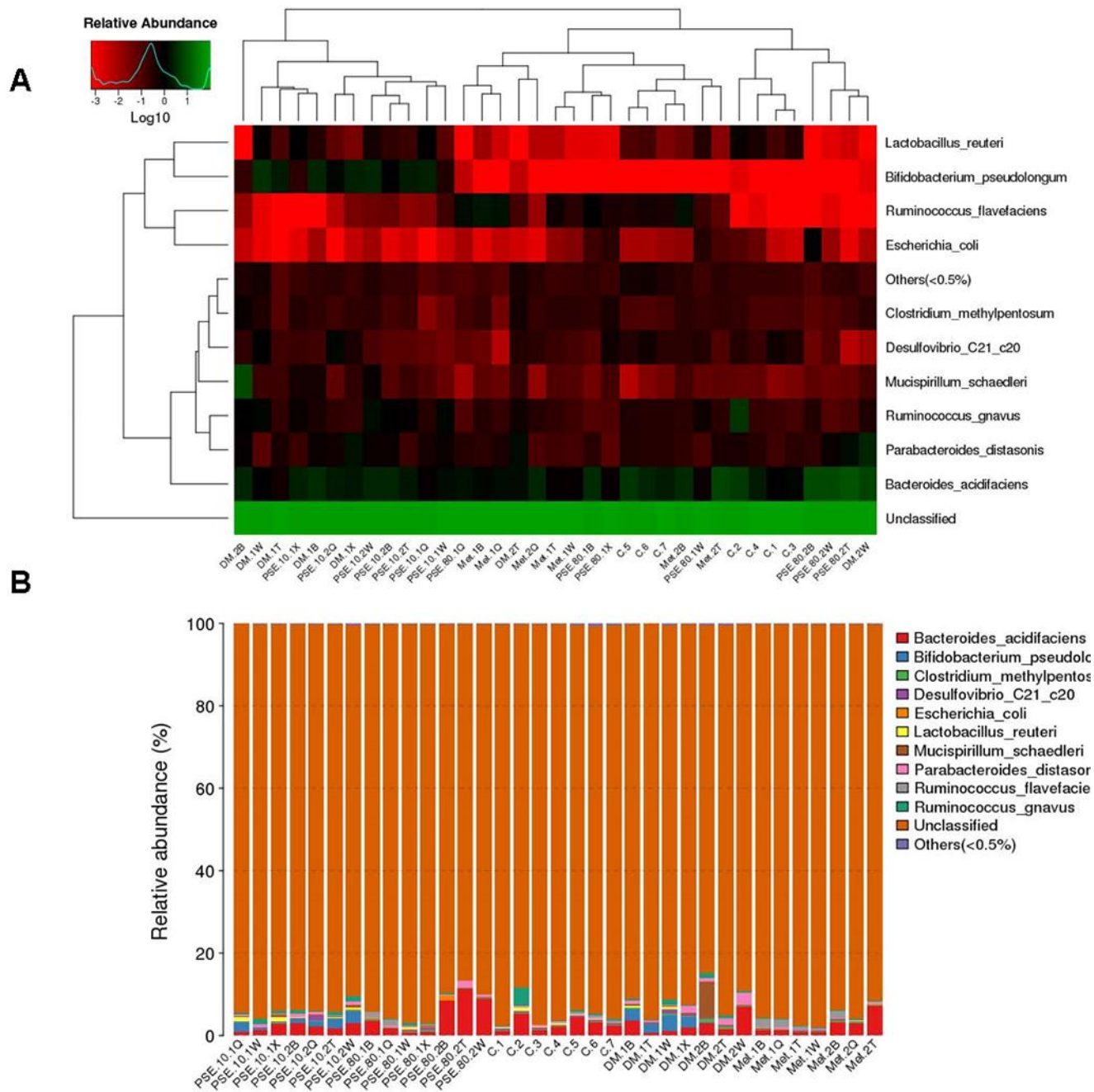
Supplementary Figure 3. Effect of PSE on gut microflora at order level of type 2 diabetic mice induced by high-fat diet. Heat map of order level species abundance (A). Histogram of species profiling at order classification level (B). Column height represents relative abundance.



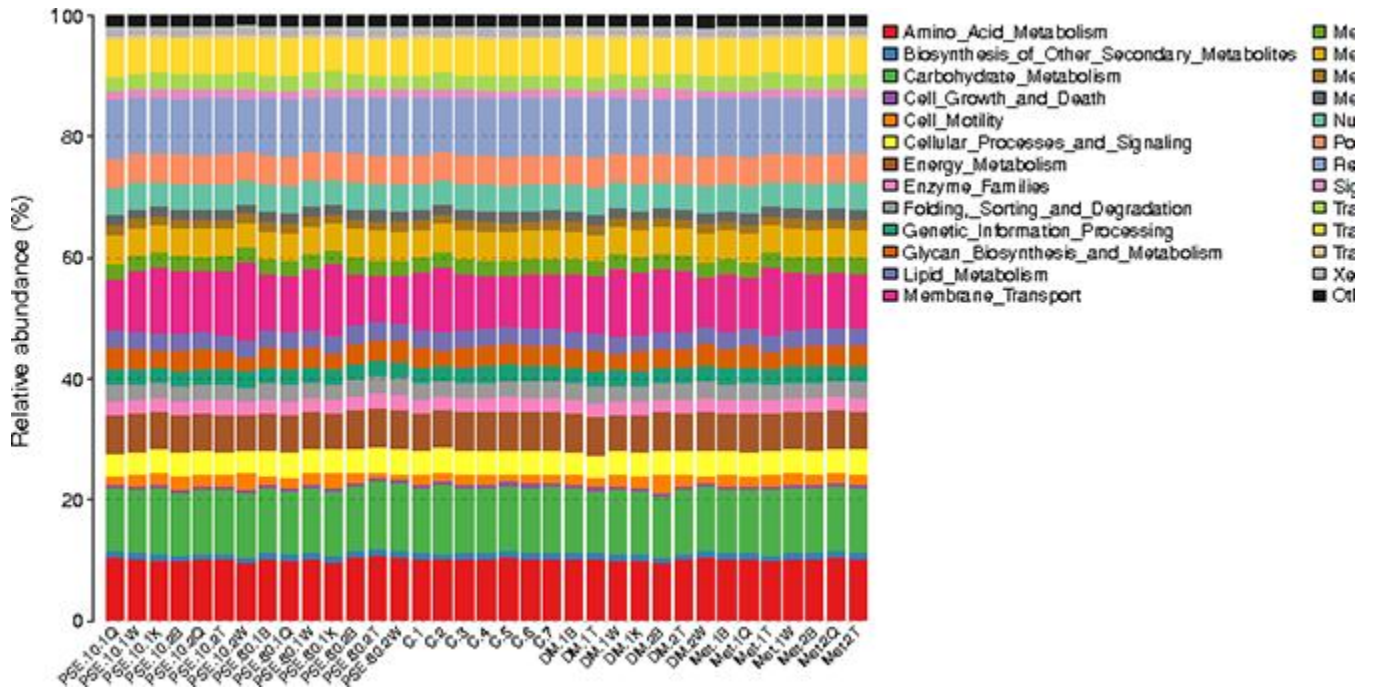
Supplementary Figure 4. Effect of PSE on gut microflora at family level of type 2 diabetic mice induced by high-fat diet. Heat map of family level species abundance (A). Histogram of species profiling at order classification level (B). Column height represents relative abundance.



Supplementary Figure 5. Effect of PSE on gut microflora at genus level of type 2 diabetic mice induced by high-fat diet. Heat map of genus level species abundance (A). Histogram of species profiling at genus classification level (B). Column height represents relative abundance.



Supplementary Figure 6. Effect of PSE on gut microflora at species level of type 2 diabetic mice induced by high-fat diet. Heat map of order level species abundance (A). Histogram of species profiling at order classification level (B). Column height represents relative abundance.



Supplementary Figure 7. Histogram of species profiling for KEGG pathways at level 2 with PICRUST analysis. The same colour represented same primary pathway. Column height represents relative abundance.

