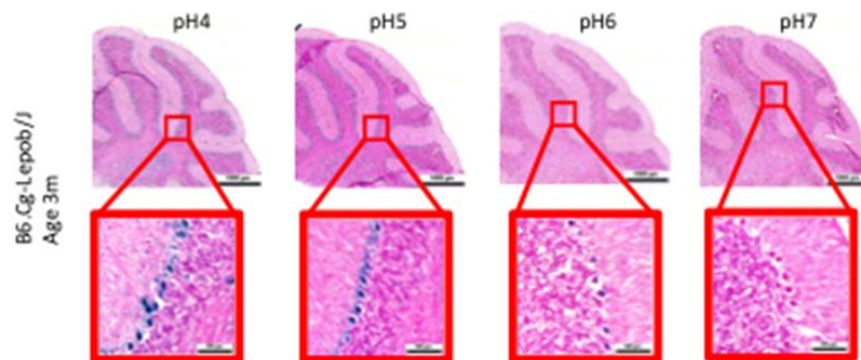
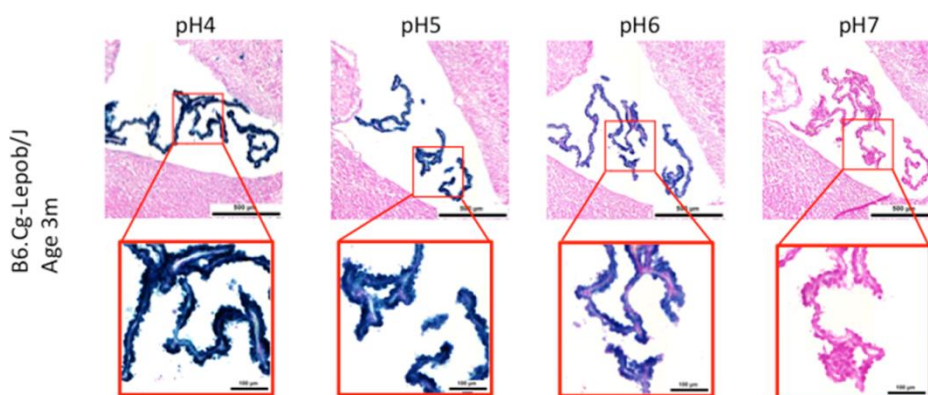


SUPPLEMENTARY FIGURES



Supplementary Figure 1. pH-dependent (pH 4 to pH 7) β -gal activity in frozen sections of mouse cerebellum from 3 month old leptin receptor-deficient *ob/ob* mice. Nuclear Fast Red was used for counterstaining. At pH 6, specific for SA- β -gal, bluish color from β -gal activity is evident specifically in the Purkinje cell layer. Representative images from 3 different mice per genotype are shown.



Supplementary Figure 2. pH-dependent (pH 4 to pH 7) β -gal activity in frozen sections of choroid plexus from 3 months old leptin receptor-deficient *ob/ob* mice. Nuclear Fast Red was used for counterstaining. At pH 6, specific for SA- β -gal, bluish color from β -gal activity is evident specifically in ependymal cells in the choroid plexus. Representative images from 3 different mice are shown.