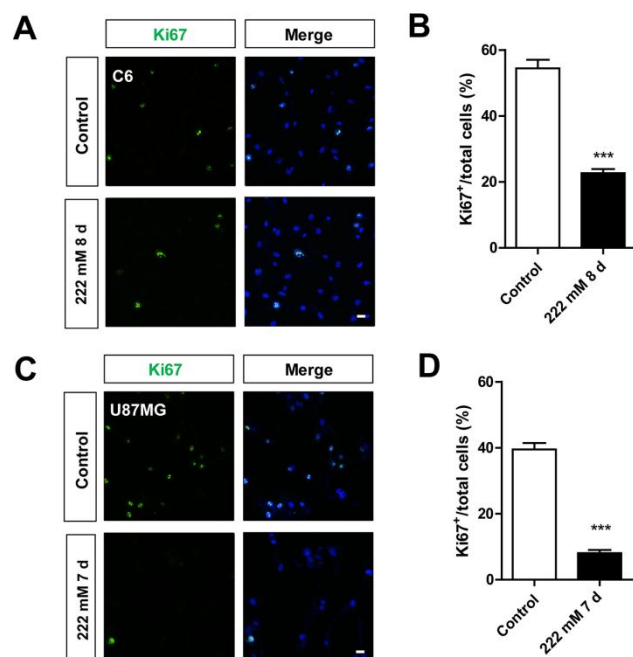
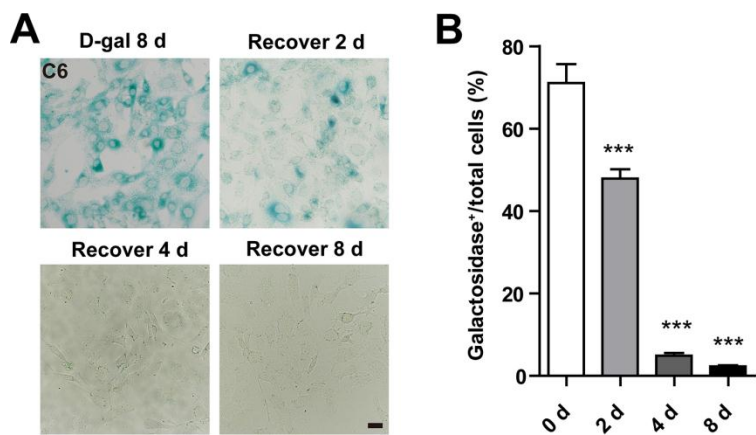


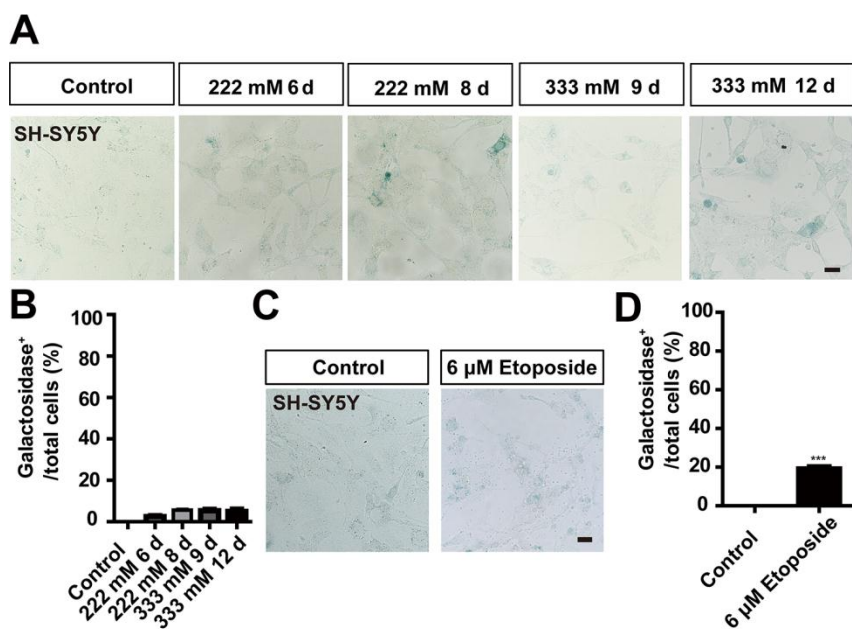
SUPPLEMENTARY FIGURES



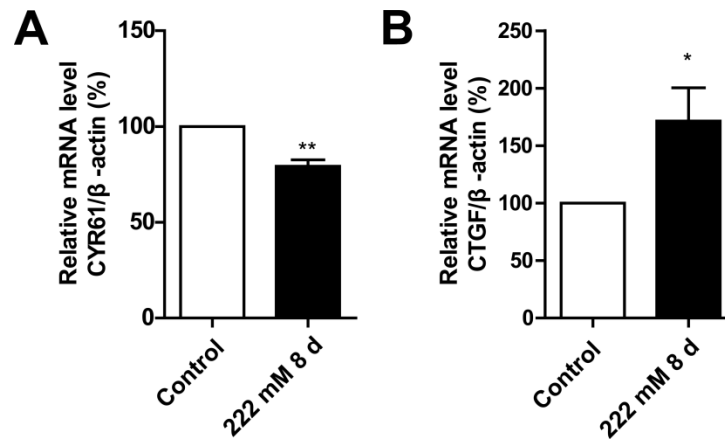
Supplementary Figure 1. D-gal inhibited the proliferation of C6 and U87MG cells. (A) Immunostaining of Ki67 (green) in control and senescent C6 cells (treated with 222 mM D-gal for 8 d). (B) Quantitative analysis of the percentage of Ki67⁺ cells over total cells as shown in (A) (n=15). (C) Immunostaining of Ki67 (green) in control and senescent U87MG cells (treated with 222 mM D-gal for 7 d). (D) Quantitative analysis of the percentage of Ki67⁺ cells over total cells as shown in (C) (n=15). Scale bars, 20 μ m. Data shown are mean \pm s.e.m. *** $P < 0.001$.



Supplementary Figure 2. D-gal-induced C6 cell senescence can be reversed. (A) Representative images showing β -galactosidase staining in senescent C6 cells (treated with D-gal at 222 mM for 8 d) and senescent C6 cells after removal of D-gal for 2, 4, 8 d. (B) Quantification of the percentage of β -galactosidase⁺ C6 cells over total cells as shown in (A) (n=15). Scale bar, 20 μ m. Data shown are mean \pm s.e.m. ^{***} $P < 0.001$.



Supplementary Figure 3. D-gal failed to induce the senescence of SH-SY5Y cells. (A) Representative images showing β -galactosidase staining in control SH-SY5Y cells and SH-SY5Y cells treated with D-gal at 222 mM for 6 and 8 d, or 333 mM for 9 and 12 d. (B) Quantification of the percentage of β -galactosidase⁺ SH-SY5Y cells over total cells as shown in (A) (n=15). (C) Representative images of β -galactosidase staining in control SH-SY5Y cells and SH-SY5Y cells treated with etoposide at 6 μ M for 1 d, and recovered for 4 d. (D) Quantification of the percentage of β -galactosidase⁺ SH-SY5Y cells over total cells as shown in (C) (n=15). Scale bars, 20 μ m. Data shown are mean \pm s.e.m. ^{***} $P < 0.001$.



Supplementary Figure 4. D-gal treatment altered the expression of other YAP-targeted genes. (A, B) qPCR results showing the mRNA level of CYR61 (A, n=4) and CTGF (B, n=7) in control and senescent C6 cells (treated with 222 mM D-gal for 8 d). Data shown are mean \pm s.e.m. * $P < 0.05$, ** $P < 0.01$.