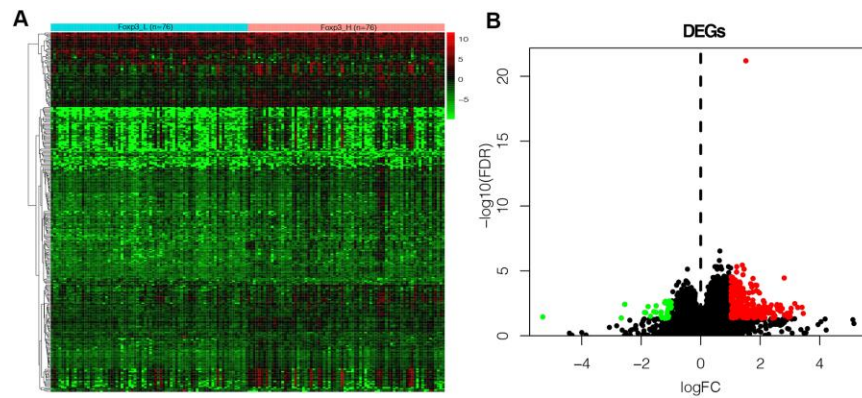
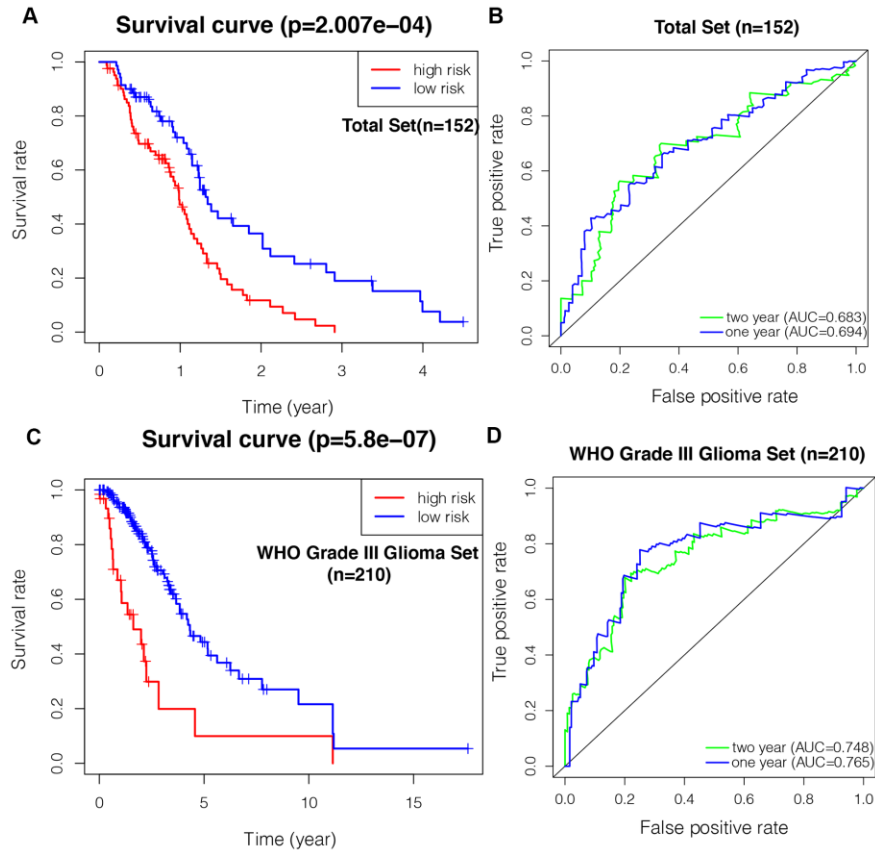


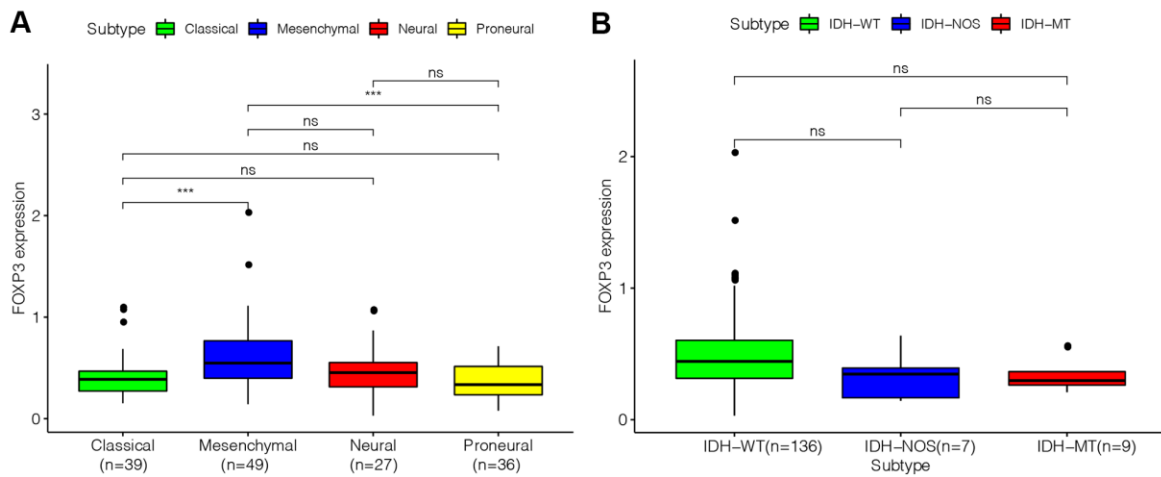
SUPPLEMENTARY FIGURES



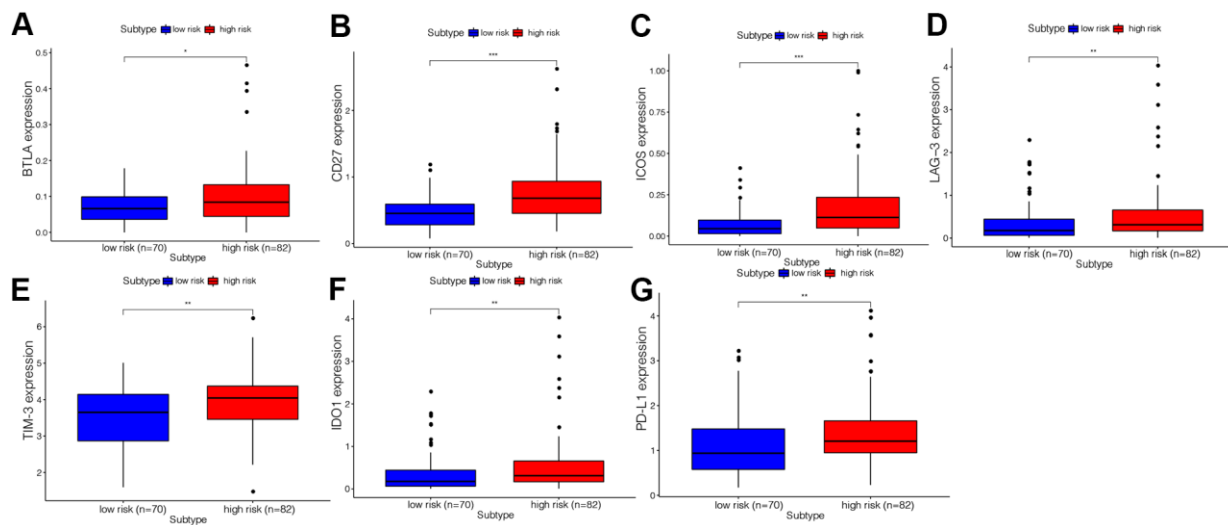
Supplementary Figure 1. Identification of Foxp3-associated differentially expressed genes. (A) Heatmap of genes differentially expressed between Foxp3_H and Foxp3_L. (B) Volcano plot of 294 genes differentially expressed between Foxp3_H and Foxp3_L.



Supplementary Figure 2. The prognostic value of the IPS in the total set, containing the training set, the validation set, and WHO grade III gliomas set. (A) Kaplan–Meier curves of overall survival based on the IPS in the total set (n=152). (B) ROC curve analysis of the IPS in the total set (n=152). (C) Kaplan–Meier curves of overall survival based on the IPS in the WHO grade III gliomas set (n=210). (D) ROC curve analysis of the IPS in the WHO grade III gliomas set (n=210).



Supplementary Figure 3. FOXP3 expression in GBM with different subtypes and IDH status. (A) FOXP3 expression in GBM with different subtypes. **(B)** FOXP3 expression in GBM with IDH status. * $P < 0.05$, ** $P < 0.01$, *** $P < 0.001$.



Supplementary Figure 4. Comparison of immune checkpoint gene expression levels between high risk and low risk using ANOVA test. * $P < 0.05$, ** $P < 0.01$, * $P < 0.001$.**