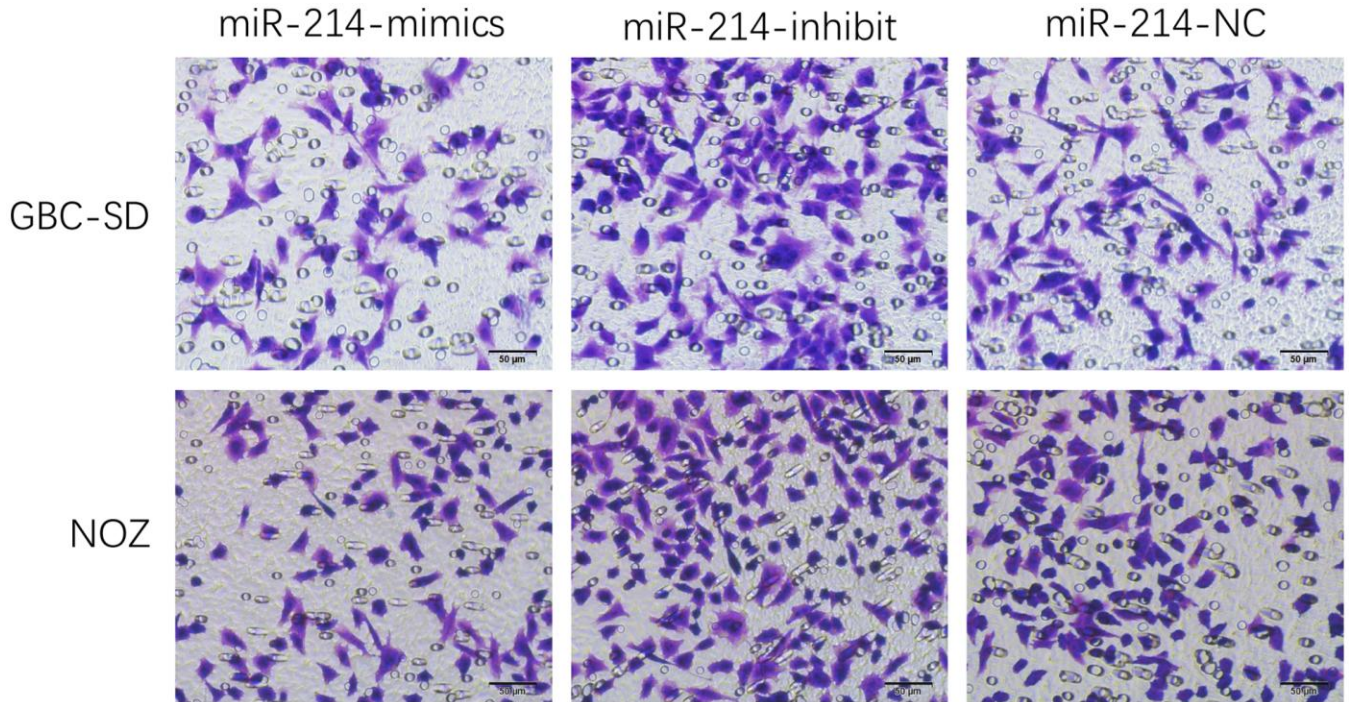
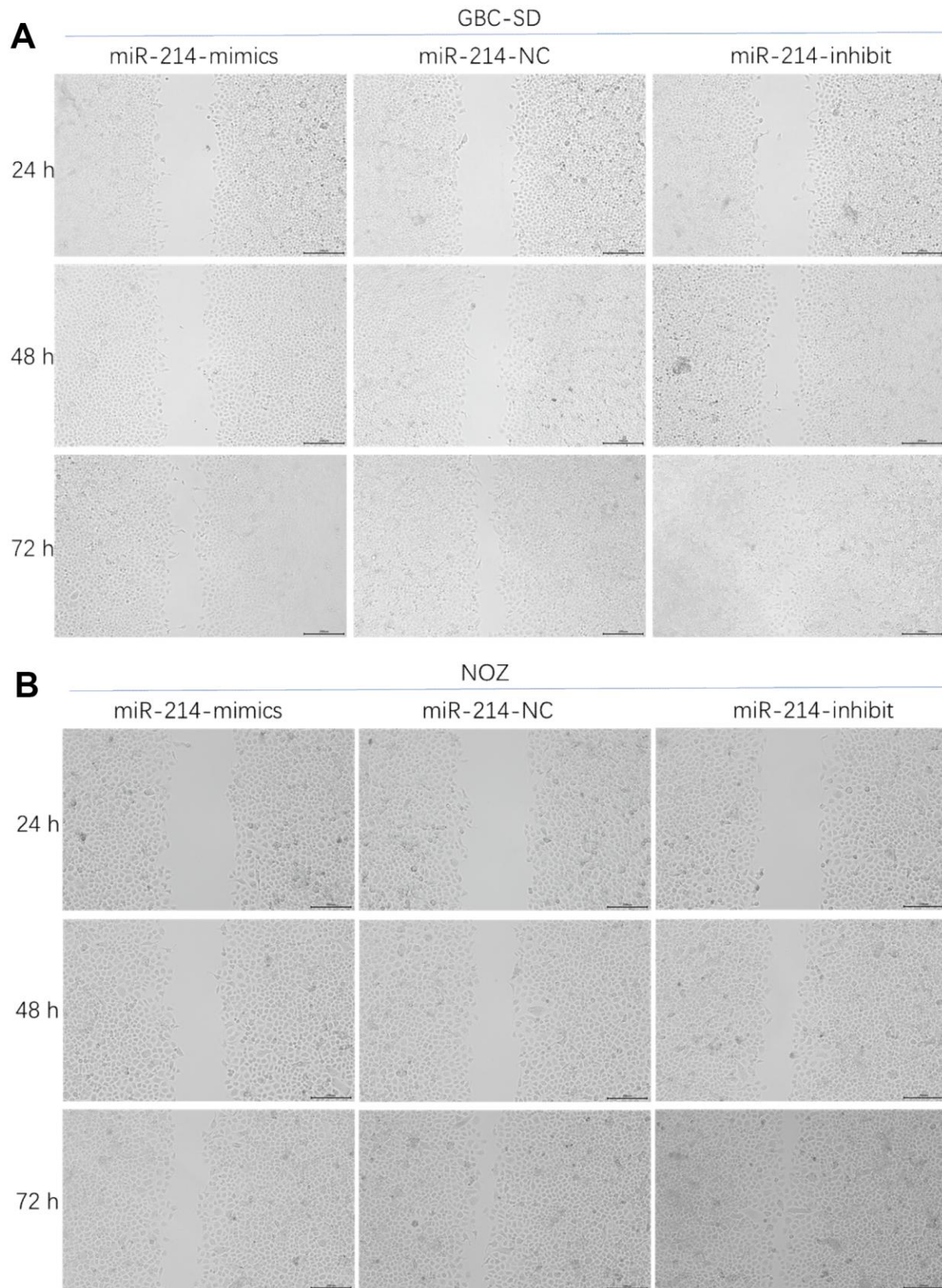


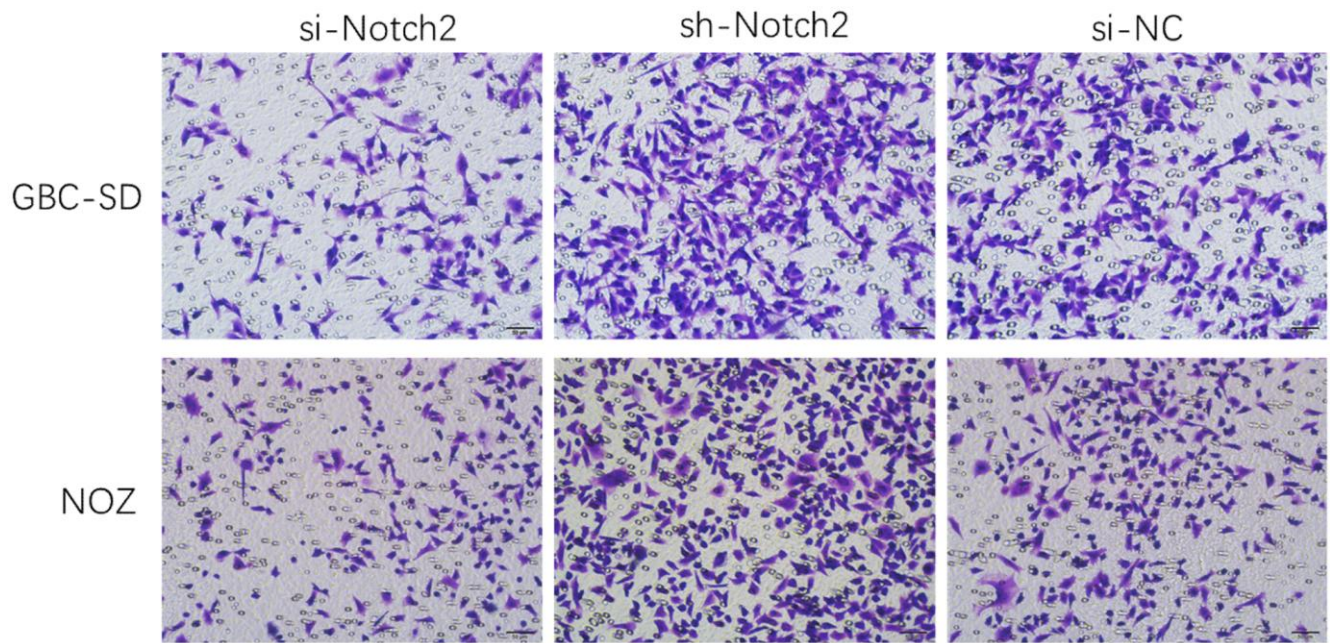
SUPPLEMENTARY FIGURES



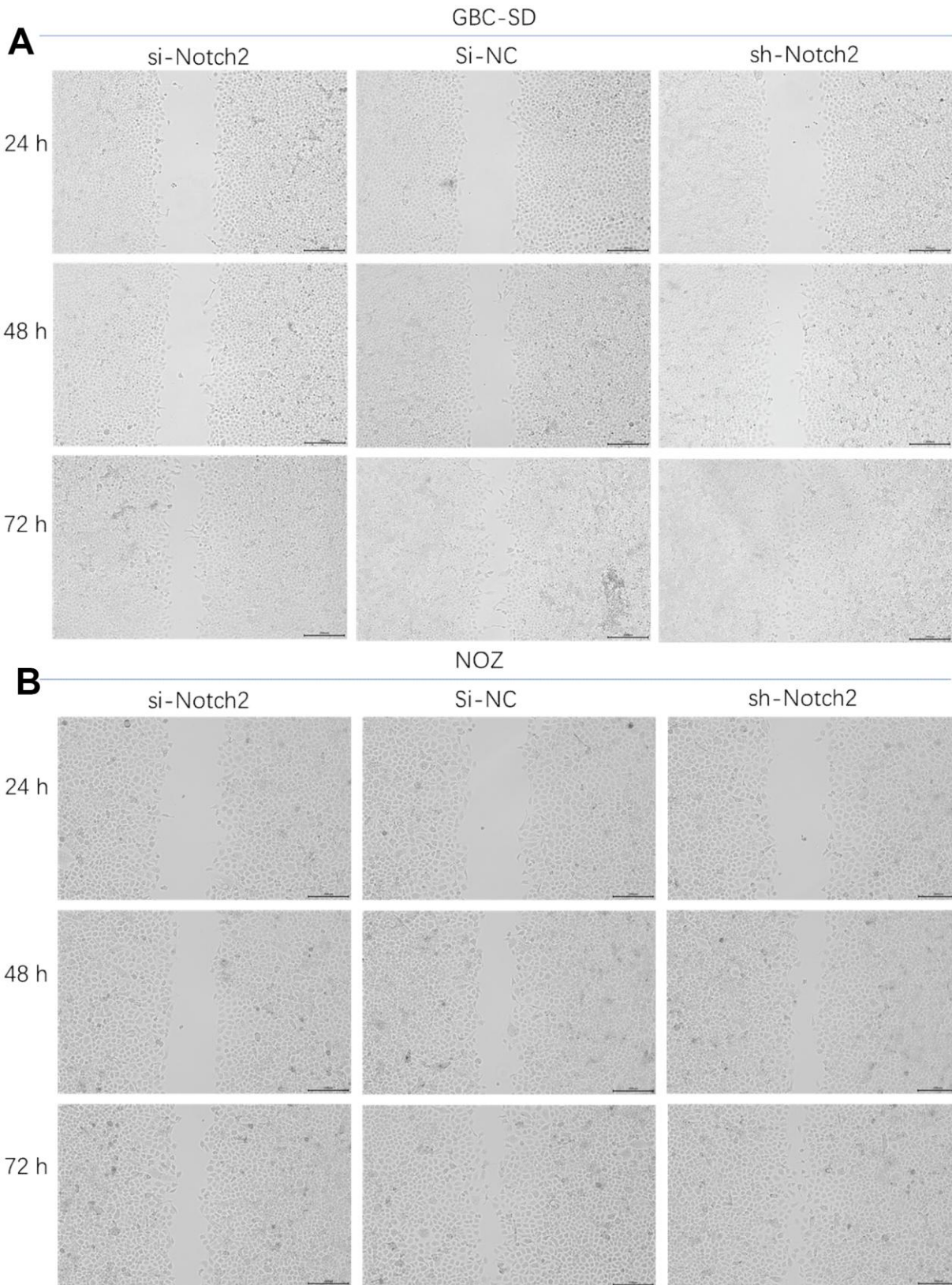
Supplementary Figure 1. Cell invasion assay in transwell chambers by using GBC-SD or NOZ cell lines transfected with miR-214-mimics, miR-214-inhibit and miR-214-NC control. Cells were stained with crystal violet and photographed (magnification, $\times 100$). Black bars indicate 50 μ m. Compared with the control cells, cells with miR-214 knockdown (miR-214-inhibit) showed significantly enhanced migration and invasion capacity, while overexpression of miR-214 (miR-214-mimics) inhibited cell invasion.



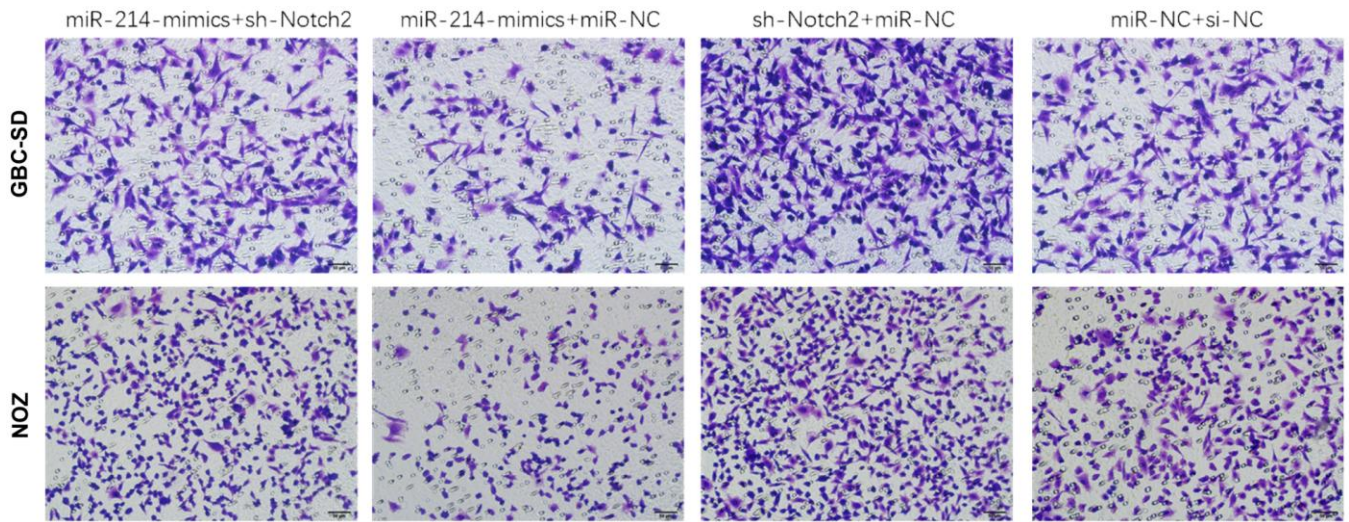
Supplementary Figure 2. Cell migration assay using GBC-SD (A) and NOZ (B) cell lines transfected with miR-214-mimics, miR-214-inhibit and miR-214-NC control. Scratch assay was made on confluent cells by drawing a line across the bottom of the dish. The figure shows micrographs of the extent of closure obtained after 24, 48 and 72 hours under different transfection conditions. Phase-contrast microscopy pictures were taken of the wounded area. Black bars indicated 200 μ m.



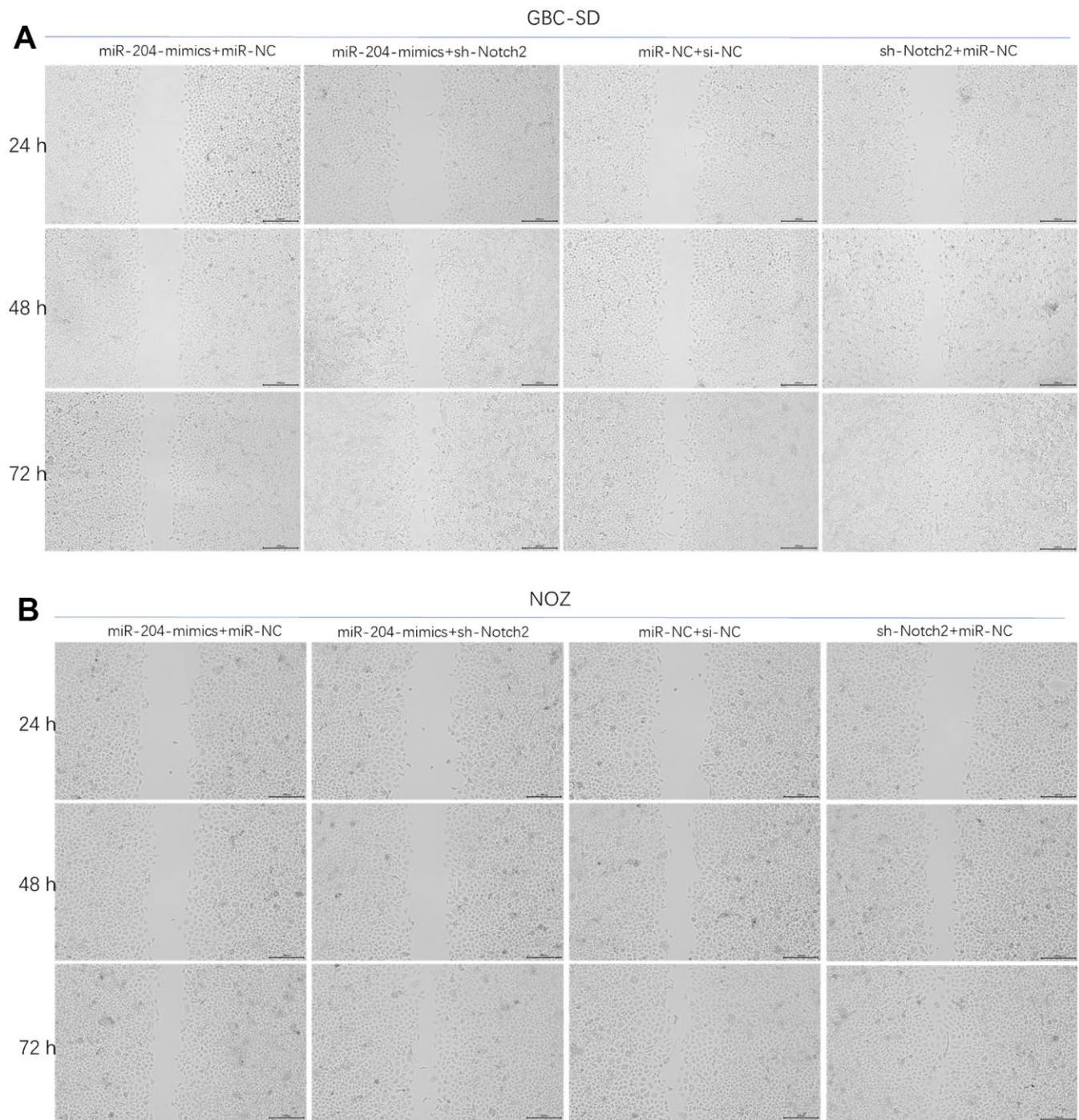
Supplementary Figure 3. Cell invasion assay in transwell chambers by using GBC-SD or NOZ cell lines transfected with si-Notch2, sh-Notch2 and si-NC control. Cells were stained with crystal violet and photographed (magnification, $\times 100$). Black bars indicate 50 μ m. Compared with the control cells, cells with Notch2 overexpression (sh-Notch2) showed significantly enhanced migration and invasion capacity, while knockdown of Notch2 (si-Notch2) inhibited cell invasion.



Supplementary Figure 4. Cell migration assay using GBS-SD (A) and NOZ (B) cell lines transfected with si-Notch2, sh-Notch2 and si-NC control. Scratch assay was made on confluent cells by drawing a line across the bottom of the dish. The figure shows micrographs of the extent of closure obtained after 24, 48 and 72 hours under different transfection conditions. Phase-contrast microscopy pictures were taken of the wounded area. Black bars indicated 200 μ m.



Supplementary Figure 5. Cell invasion assay in transwell chambers by using GBC-SD or NOZ cell lines transfected with miR-214-mimics+sh-Notch2, miR-214-mimics+miR-NC, sh-Notch2+miR-NC and miR-NC+si-NC. Cells were stained with crystal violet and photographed (magnification, $\times 100$). Black bars indicate 50 μ m.



Supplementary Figure 6. Cell migration assay using GBS-SD (**A**) and NOZ (**B**) cell lines transfected with miR-214-mimics+sh-Notch2, miR-214-mimics+miR-NC, sh-Notch2+miR-NC and miR-NC+si-NC. Scratch assay was made on confluent cells by drawing a line across the bottom of the dish. The figure shows micrographs of the extent of closure obtained after 24, 48 and 72 hours under different transfection conditions. Phase-contrast microscopy pictures were taken of the wounded area. Black bars indicated 200 μ m.