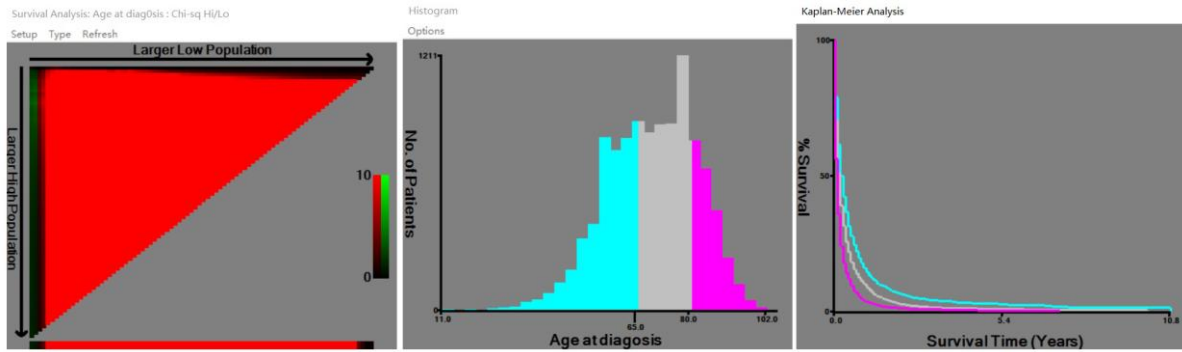
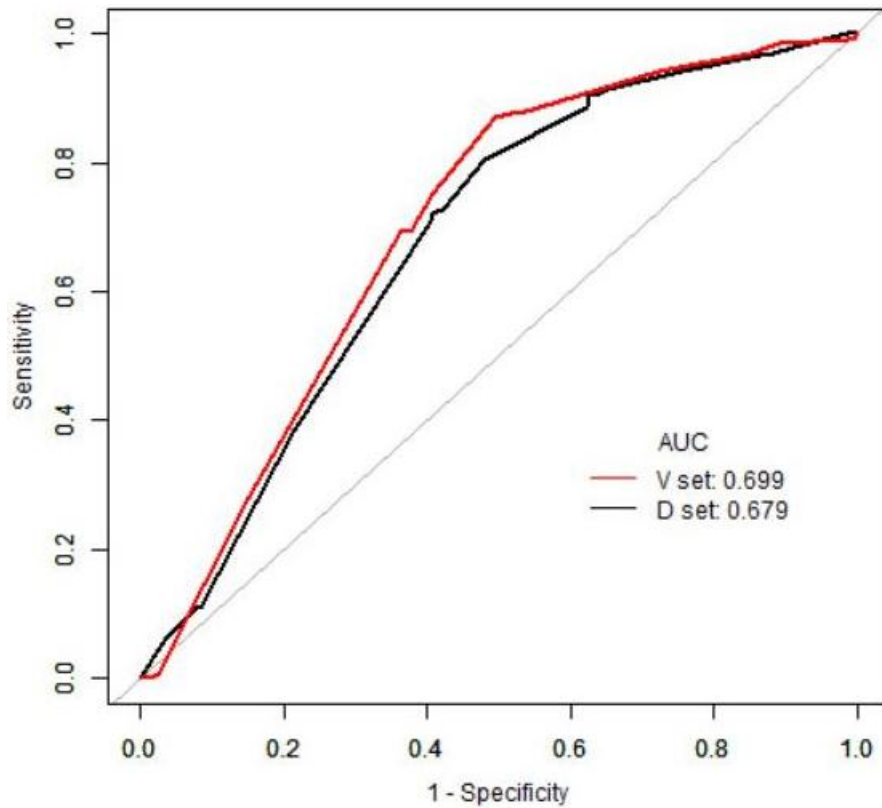


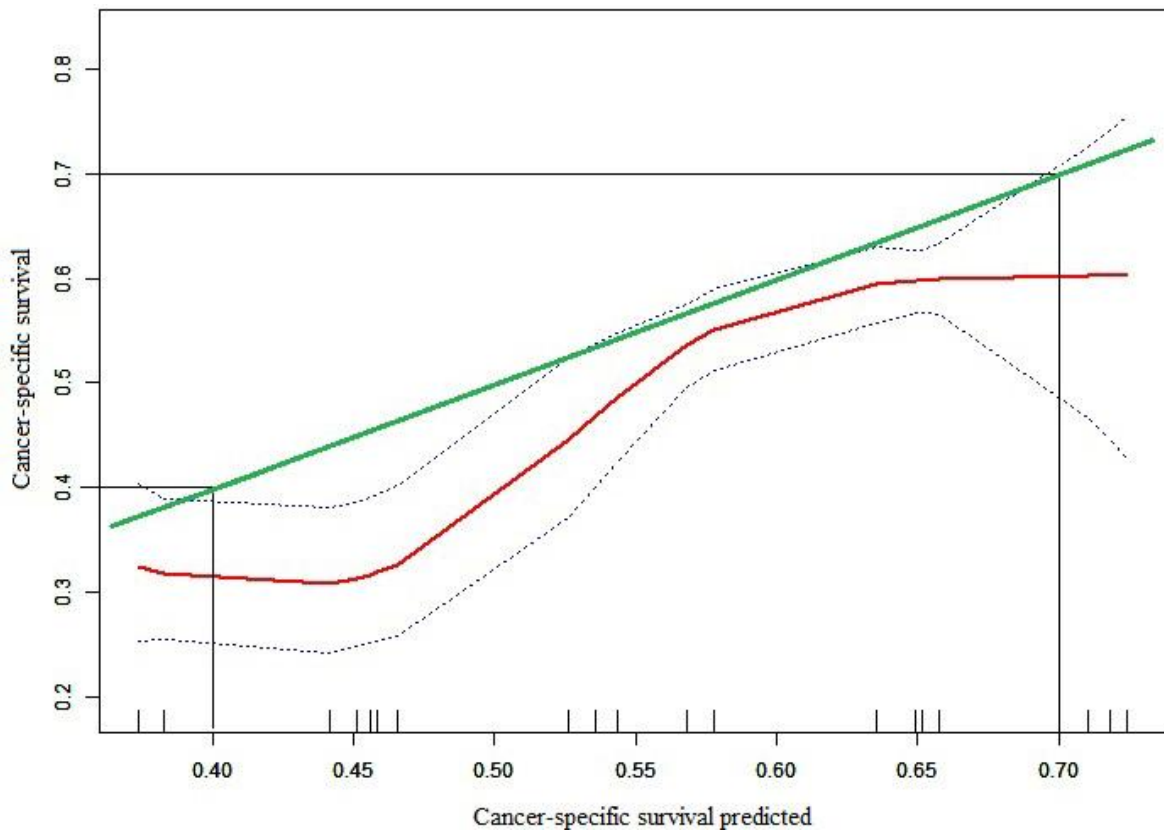
SUPPLEMENTARY FIGURES



Supplementary Figure 1. Estimation of the cutoff values for age stratification as determined by X-tile software. The ages of 65 and 80 years old were appropriate cutoff values for age at diagnosis.



Supplementary Figure 2. Receiver operating characteristic (ROC) curves for development dataset (2010-2014) and validation dataset (2015).



Supplementary Figure 3. Calibration curve for CCS rate plotted against predicted probability of CCS at 3-year after diagnosis.