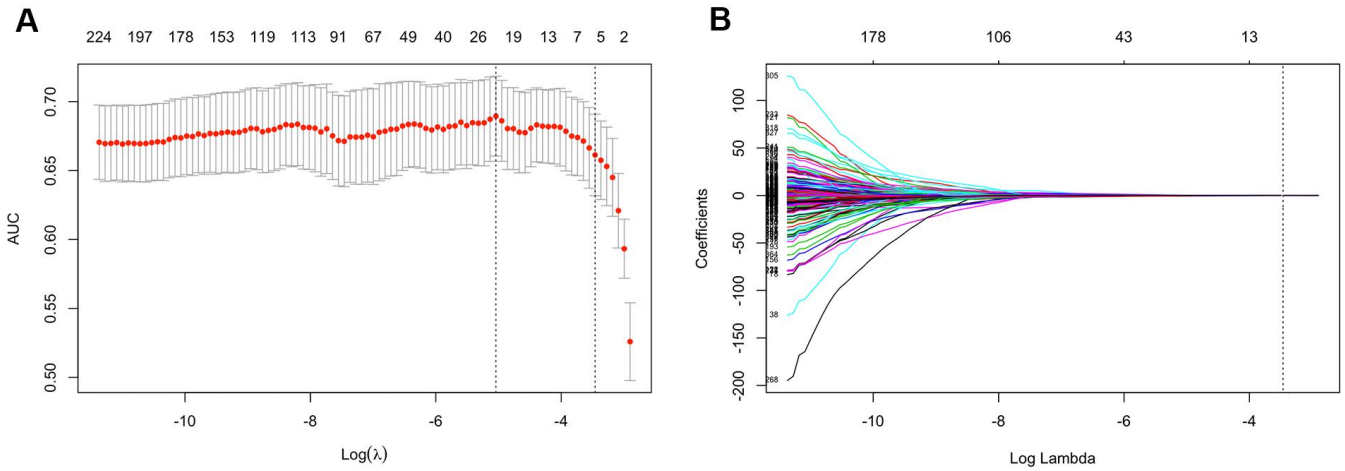
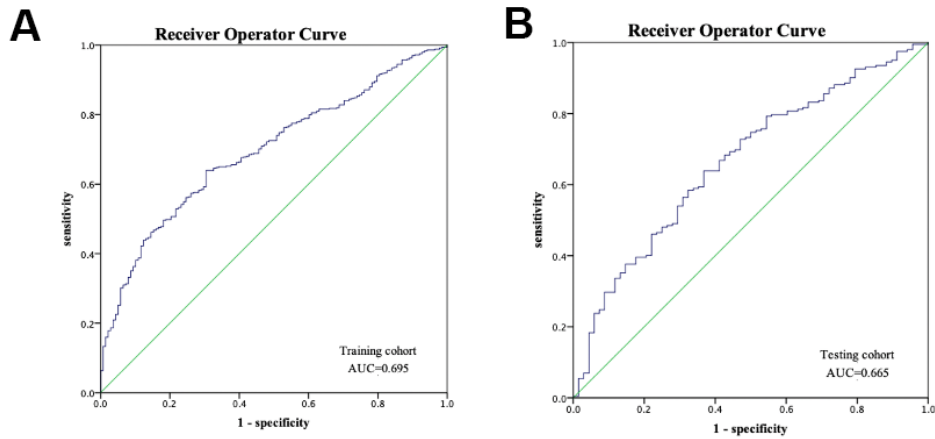


**SUPPLEMENTARY FIGURES**



**Supplementary Figure 1. Radiomics feature selection using the least absolute shrinkage and selection operator (LASSO) regression model.** (A) Using 10-fold cross-validation to select tune parameter ( $\lambda$ ). 7 features with non-zero coefficients were selected. Dotted lines on the left and right represent the minimum criterion and 1-standard error criterion (1-SE), respectively. The 1-SE criterion was applied in our study. A  $\lambda$  value of 0.03, with  $\log(\lambda)$  of -3.46 was chosen (1-SE criteria). (B) LASSO coefficient profiles of the 396 radiomics features. The vertical line shows the optimal value of  $\lambda$  and 7 features with non-zero coefficients.



**Supplementary Figure 2.** Receiver operator curves (ROC) of Rad-score to predict poor outcome (Glasgow Outcome Scale,  $\leq 3$ ) in training cohort (A) and testing cohort (B).