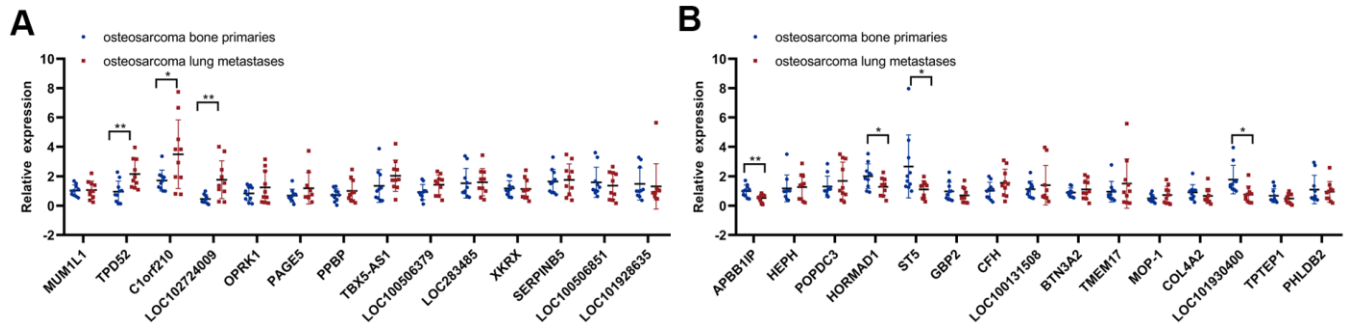
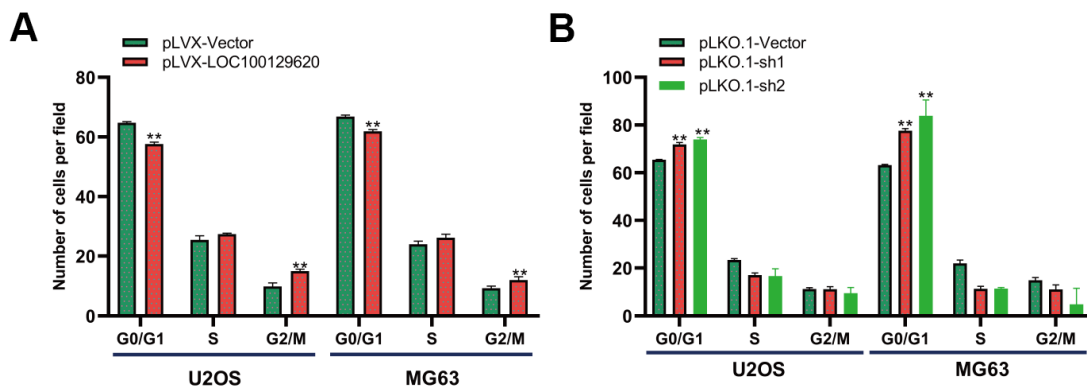


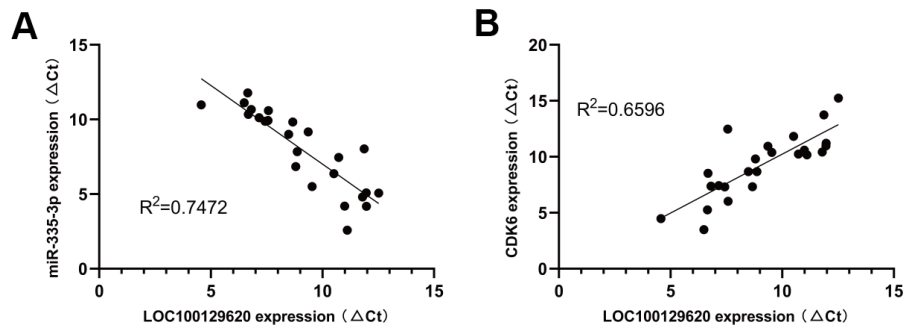
SUPPLEMENTARY FIGURES



Supplementary Figure 1. LncRNA and mRNA expression in osteosarcoma bone primary tissues and osteosarcoma lung metastases. (A) Upregulated lncRNAs and mRNAs in osteosarcoma bone primary tissues and osteosarcoma lung metastases were detected by qRT-PCR and are depicted in a heatmap. Osteosarcoma bone primary tissues, $n = 10$; osteosarcoma lung metastases, $n = 10$. (B) Downregulated lncRNAs and mRNAs in osteosarcoma bone primary tissues and osteosarcoma lung metastases were detected by qRT-PCR and are depicted in a heatmap. Osteosarcoma bone primary tissues, $n = 10$; osteosarcoma lung metastases, $n = 10$. Statistical analysis was conducted using Student's t -test. Values are means \pm SD. * $P < 0.05$ and ** $P < 0.01$.



Supplementary Figure 2. LncRNA LOC100129620 regulates the cell cycle of osteosarcoma cells. (A) Quantitative flow cytometry analysis of the cell cycle of U2OS and MG63 cells transfected with pLVX-Vector and pLVX-LOC100129620. (B) Quantitative flow cytometry analysis of the cell cycle of U2OS and MG63 cells transfected with pLKO.1-Vector, pLKO.1-sh1, or pLKO.1-sh2. Statistical analysis was conducted using Student's t -test. Values are means \pm SD. ** $P < 0.01$.



Supplementary Figure 3. The correlation between LOC100129620 and miR-335-3p (**A**) or CDK6 (**B**) in osteosarcoma tissue.