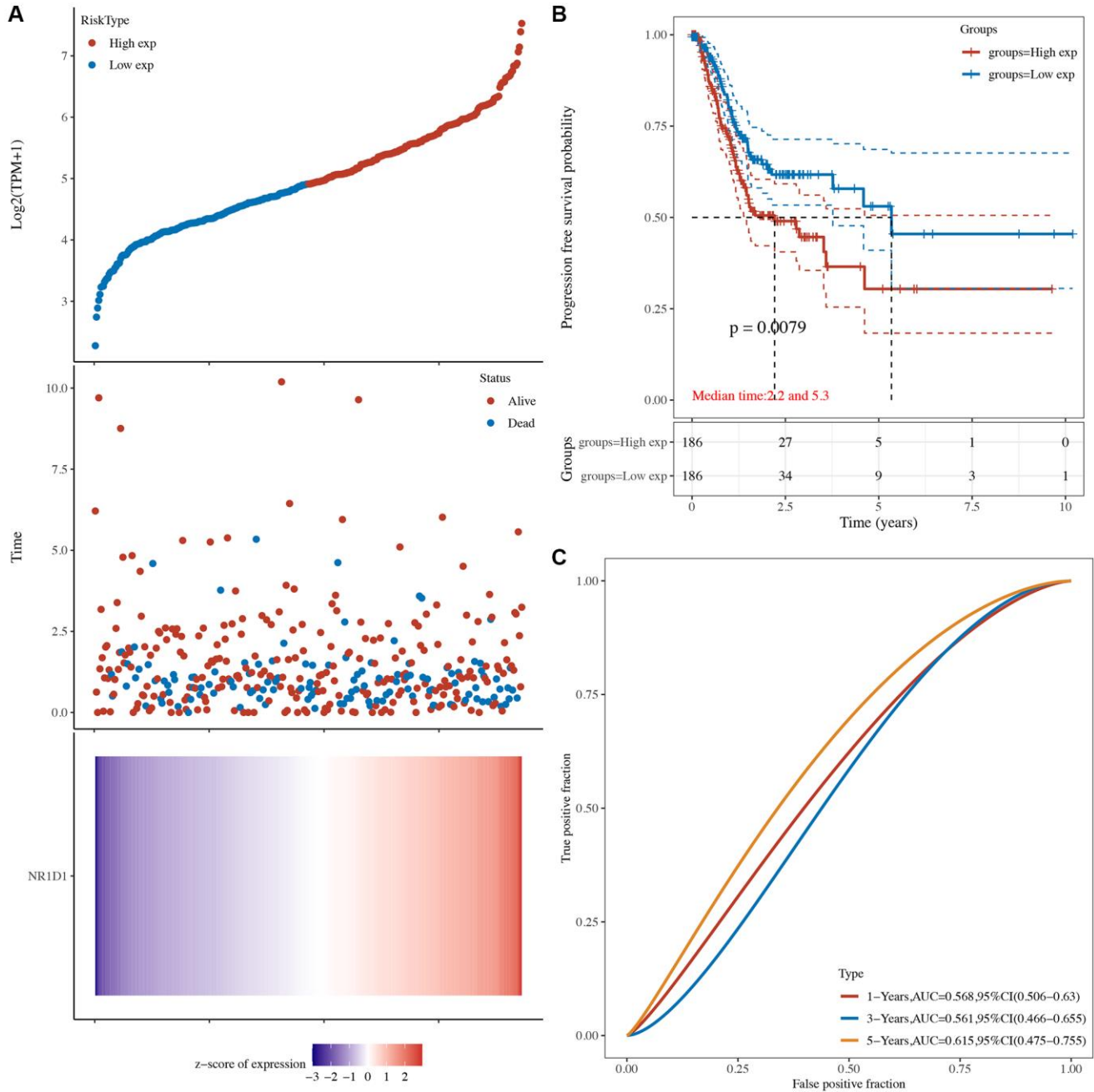
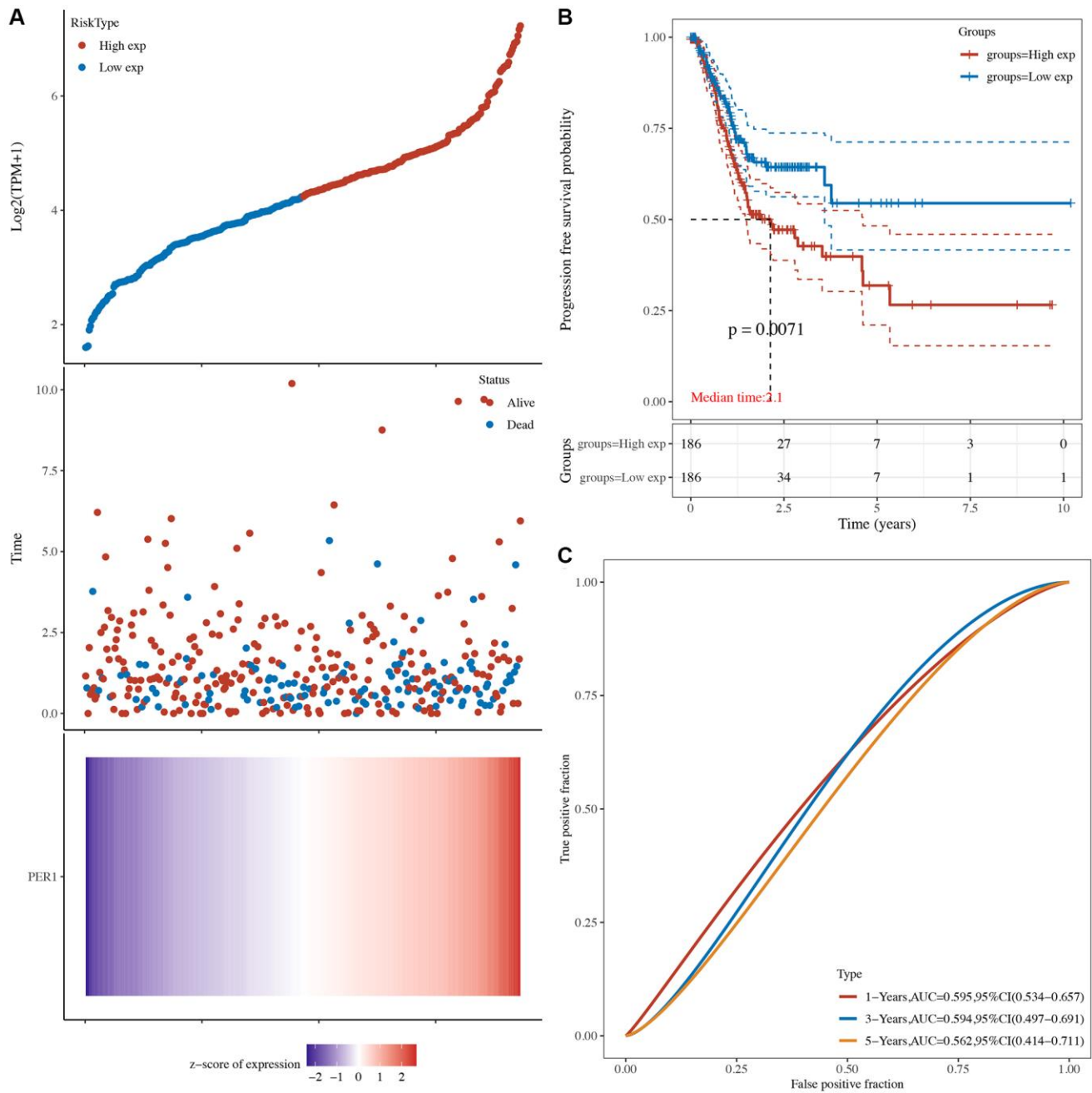


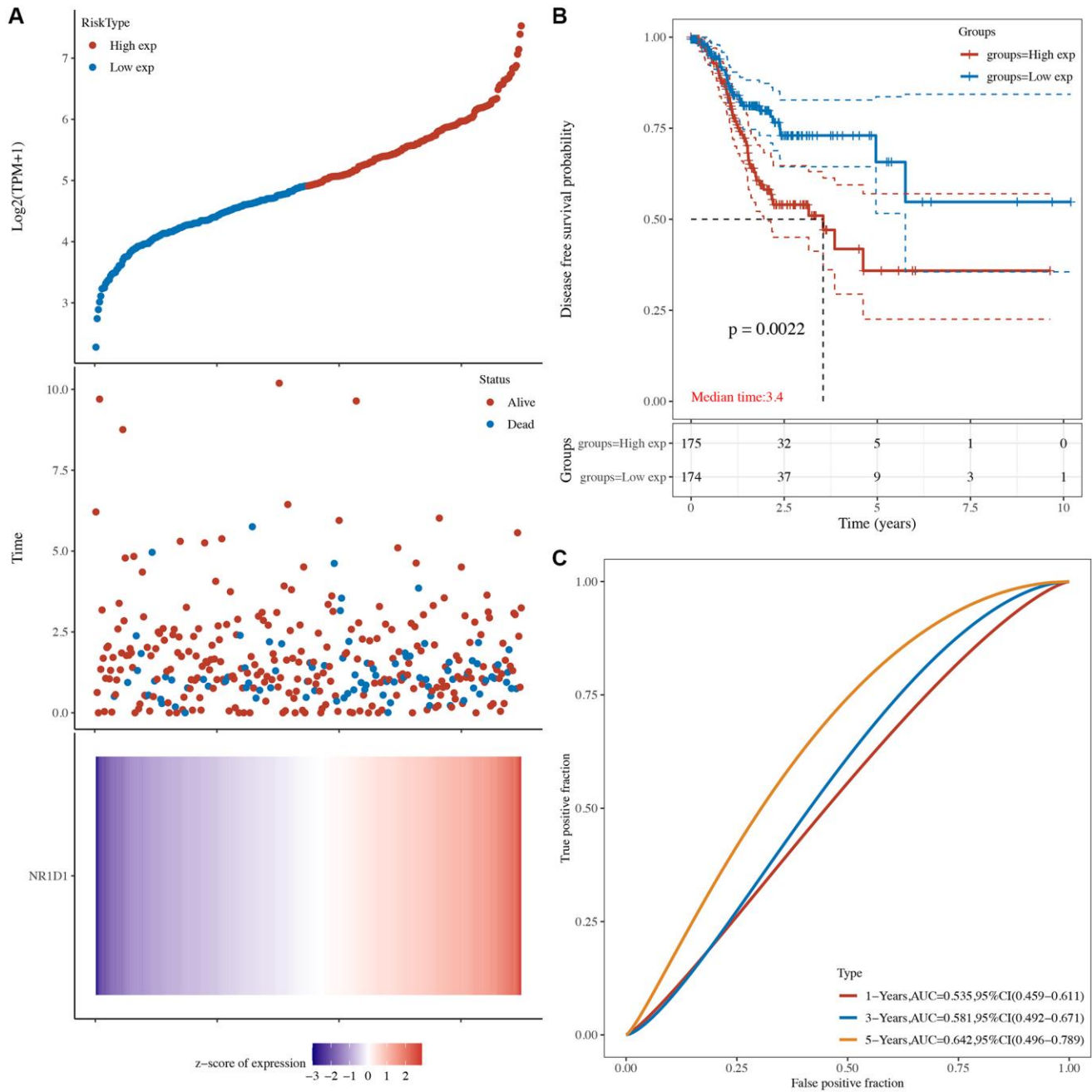
SUPPLEMENTARY FIGURES



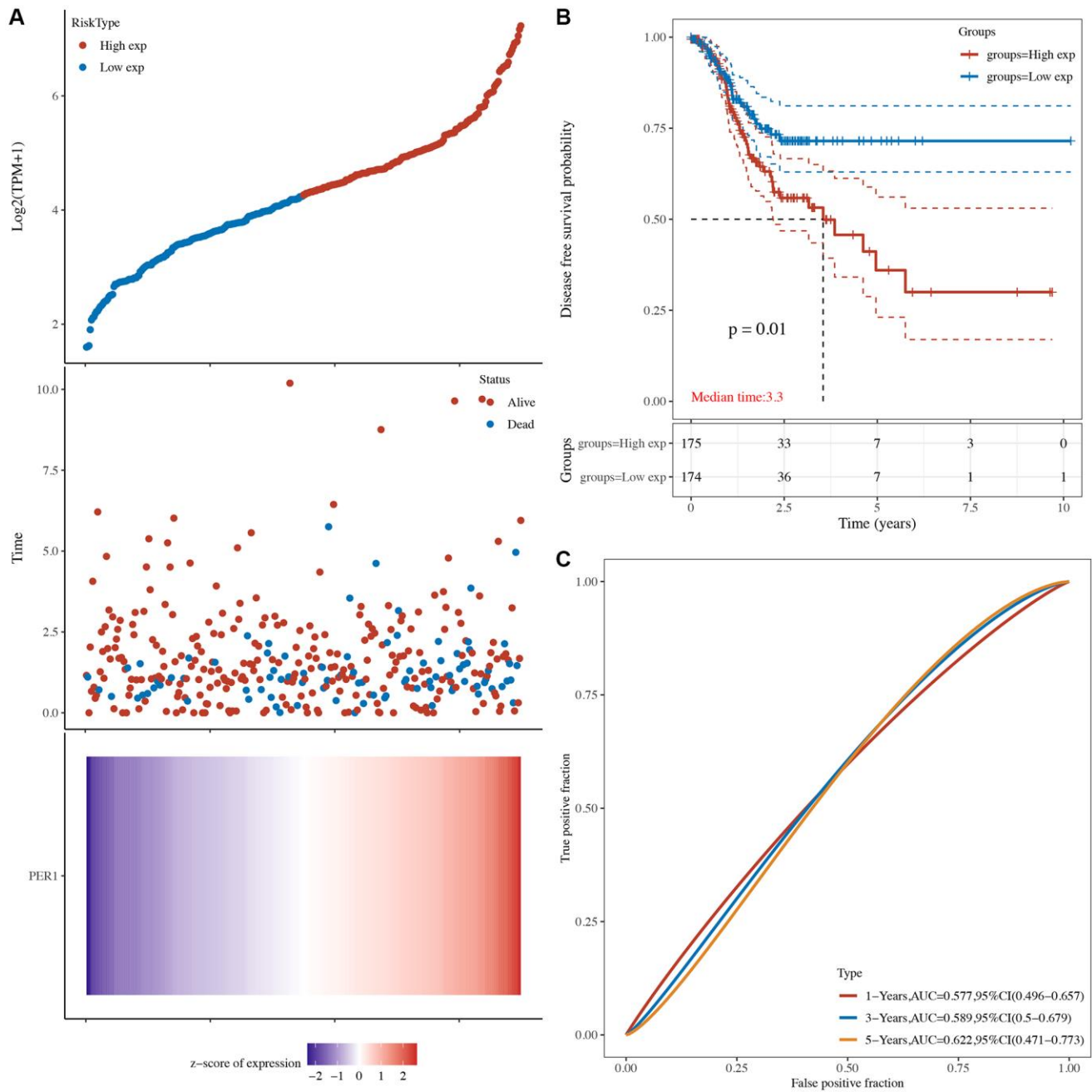
Supplementary Figure 1. The progression free survival analysis of NR1D1 in STAD. (A) The risk score, survival status and gene expression of each patient. **(B)** Kaplan-Meier progression free survival curve of NR1D1 in STAD patients with high and low NR1D1 expression. **(C)** Time-dependent ROC of P NR1D1 in predicting the prognosis of STAD patients. ROC receiver operating characteristic.



Supplementary Figure 2. The progression free survival analysis of PER1 in STAD. (A) The risk score, survival status and gene expression of each patient. (B) Kaplan-Meier progression free survival curve of PER1 in STAD patients with high and low PER1 expression. (C) Time-dependent ROC of PER1 in predicting the prognosis of STAD patients. ROC receiver operating characteristic.



Supplementary Figure 3. The disease-free survival analysis of NR1D1 in STAD. (A) The risk score, survival status and gene expression of each patient. (B) Kaplan-Meier disease free survival curve of NR1D1 in STAD patients with high and low NR1D1 expression. (C) Time-dependent ROC of NR1D1 in predicting the prognosis of STAD patients. ROC receiver operating characteristic.



Supplementary Figure 4. The disease-free survival analysis of PER1 in STAD. (A) The risk score, survival status and gene expression of each patient. **(B)** Kaplan-Meier disease free survival curve of PER1 in STAD patients with high and low PER1 expression. **(C)** Time-dependent ROC of PER1 in predicting the prognosis of STAD patients. ROC receiver operating characteristic.