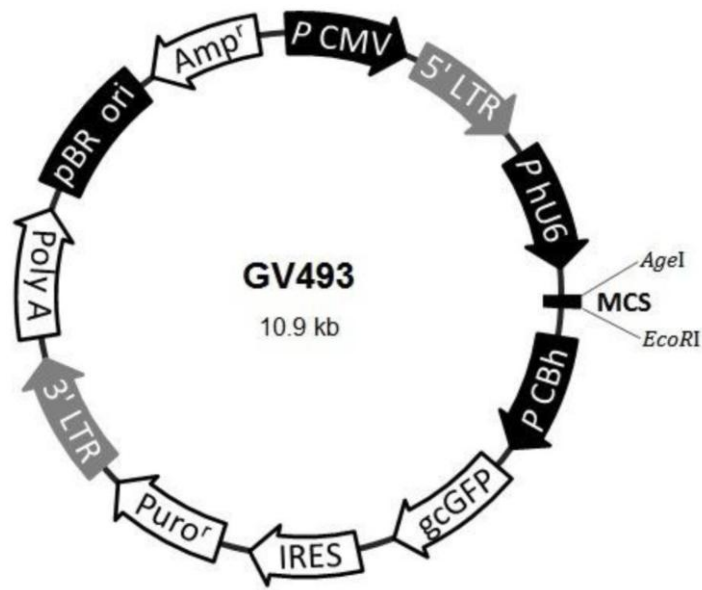
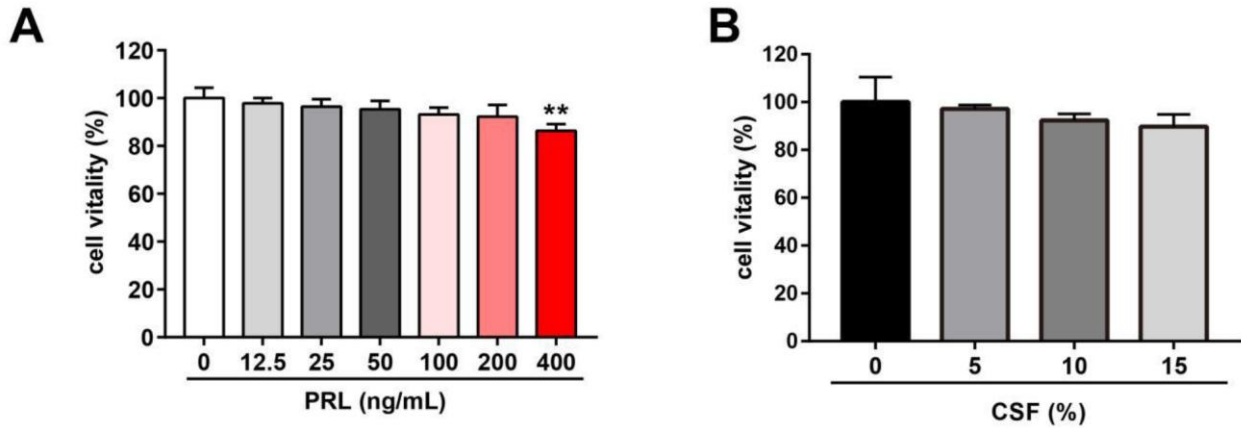


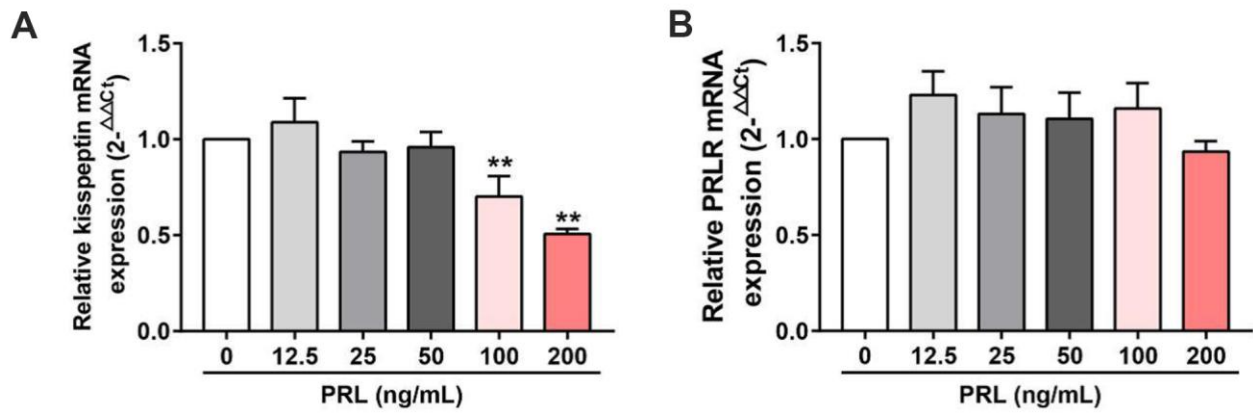
SUPPLEMENTARY FIGURES



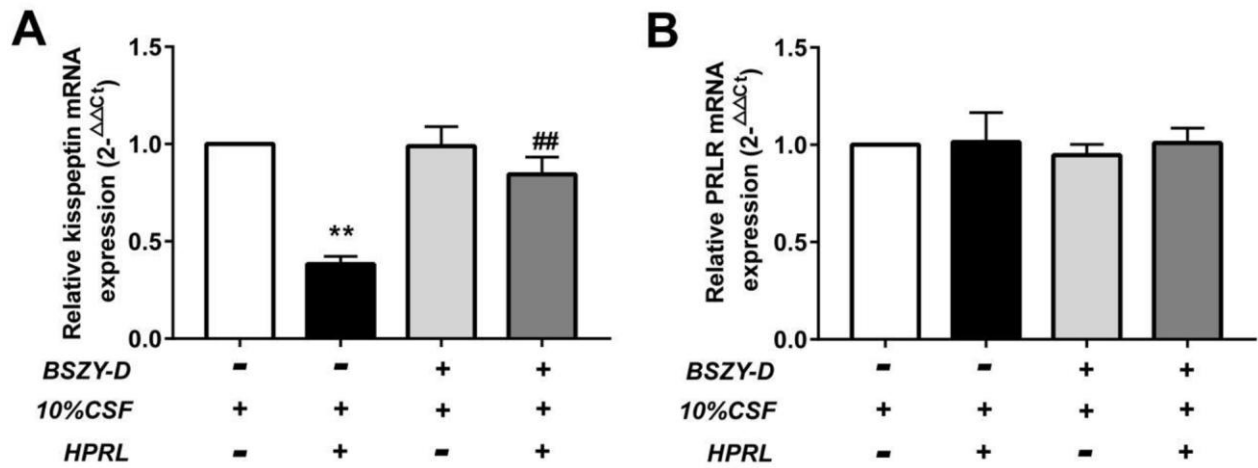
Supplementary Figure 1. The schematic diagram of lentiviral vector.



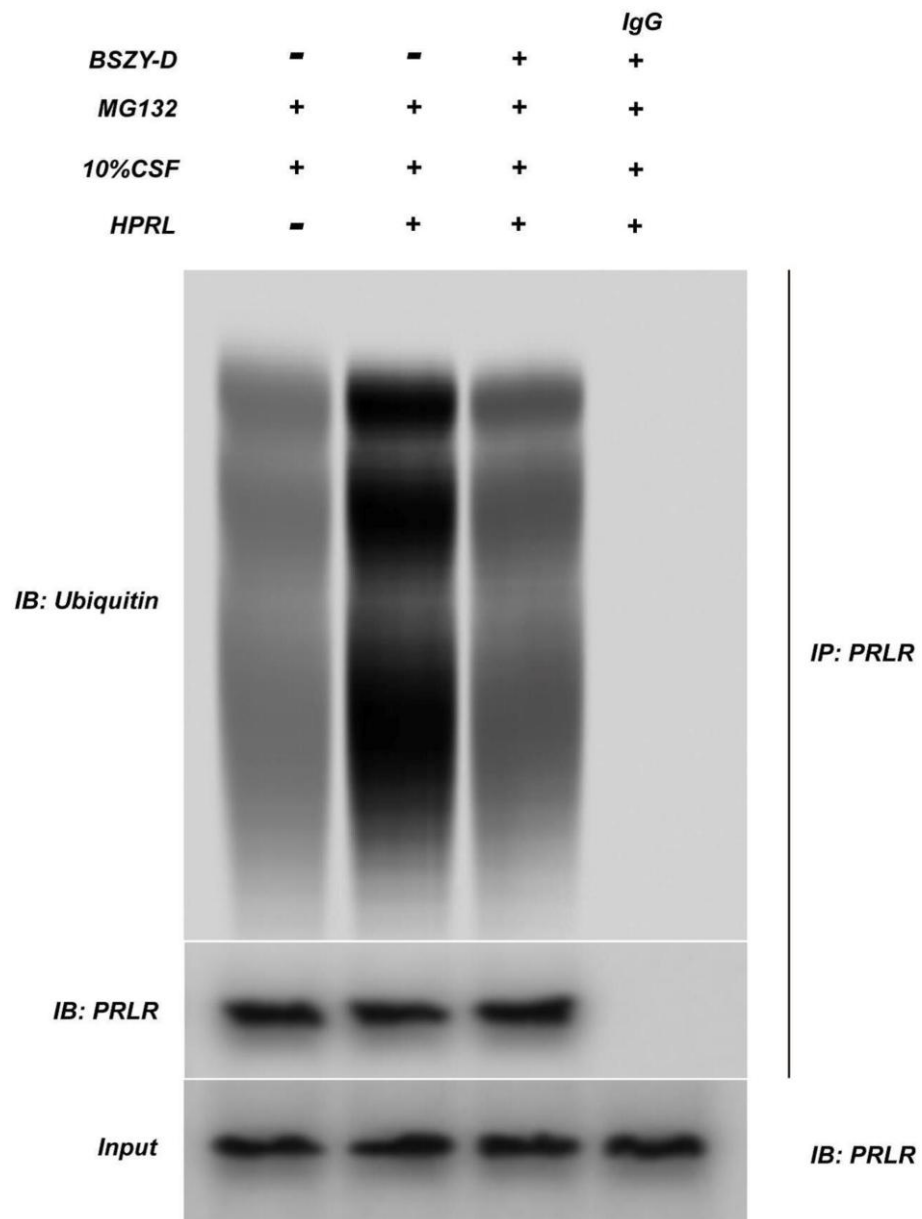
Supplementary Figure 2. Inhibitory effect of PRL or CSF in GT1-7 cells. (A) The change of cell vitality effected by different PRL concentration levels. (B) The change of cell vitality effected by different CSF concentration levels. Results were expressed as mean ± SD (n=3). **p<0.01 vs Control group.



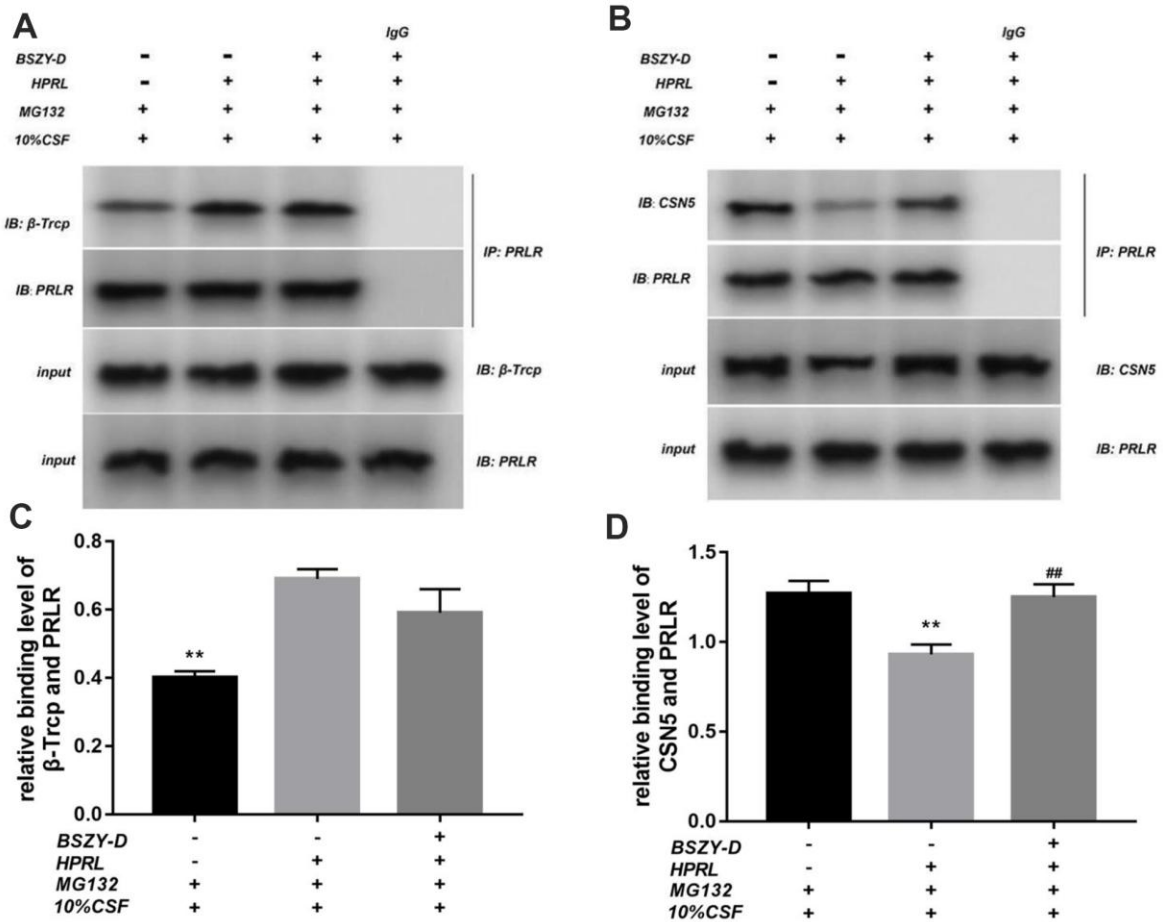
Supplementary Figure 3. Effect of the mRNA expressions of PRLR and kisspeptin in GT1-7. The mRNA expressions of PRLR and kisspeptin were detected by RT-PCR. The mRNA expressions of PRLR (A) and kisspeptin (B) were normalized to control. The results were presented as mean \pm SD (n = 3). **p < 0.01, vs. Control group.



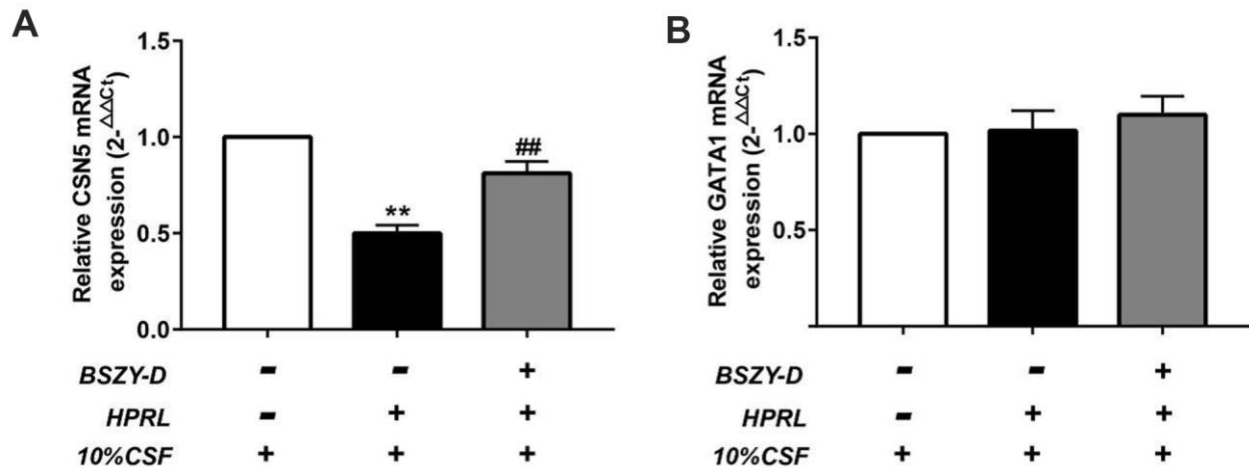
Supplementary Figure 4. Effect of the mRNA expressions of PRLR and kisspeptin in GT1-7. The mRNA expressions of PRLR and kisspeptin were detected by RT-PCR. The mRNA expressions of PRLR (A) and kisspeptin (B) were normalized to control. The results were presented as mean \pm SD (n = 3). **p < 0.01 vs. Control group, ##p < 0.01 vs. HPRL group.



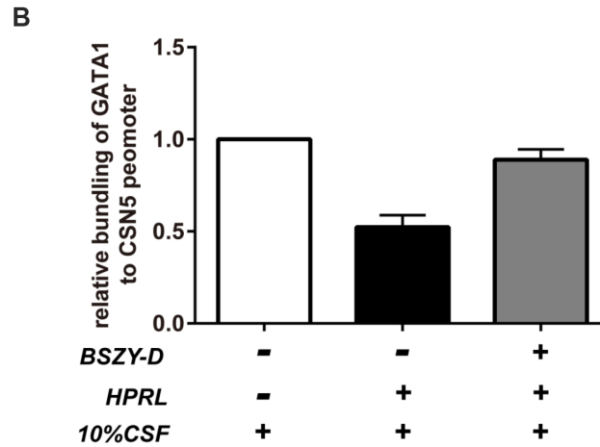
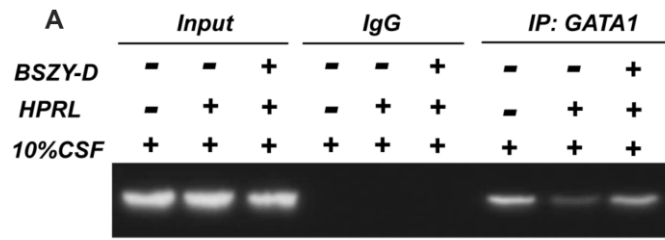
Supplementary Figure 5. The ubiquitin level of PRLR was measured with Co-IP. (n = 3).



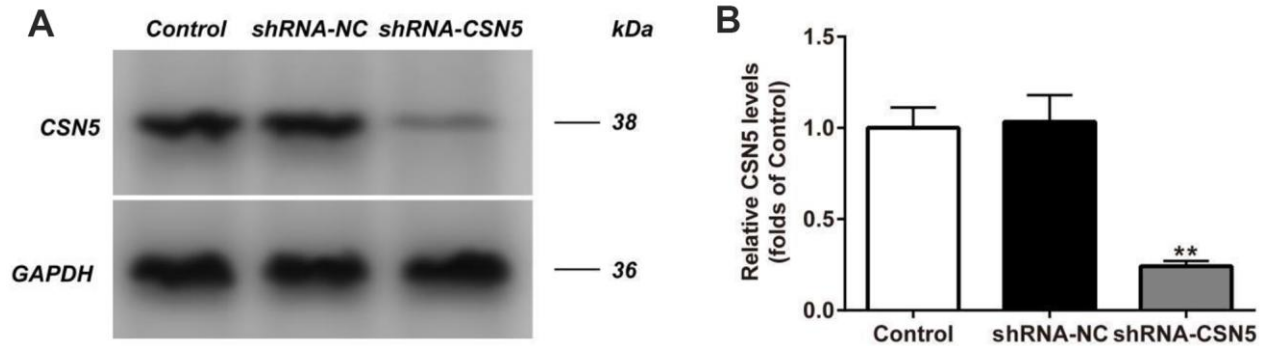
Supplementary Figure 6. The level of β -Trcp, PRLR, and CSN5 were measured with Co-IP (n = 3). (A) Representative blots of Co-IP between PRLR and β -Trcp. (B) Representative blots of Co-IP between PRLR and CSN5. (C) Quantitative relative binding level of RLR and β -Trcp. (D) Quantitative relative binding level of RLR and CSN5.



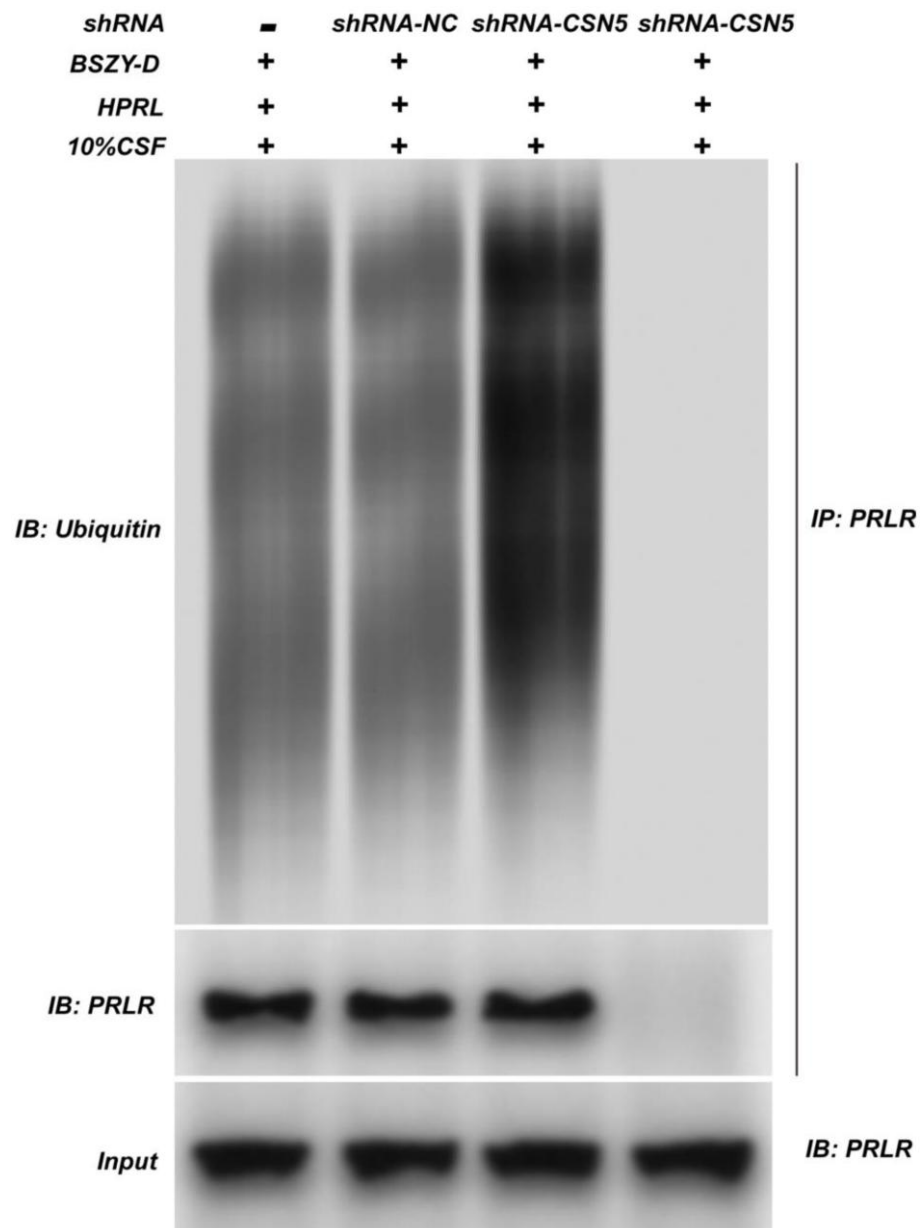
Supplementary Figure 7. Effect of the mRNA expressions of CSN5 and GATA1 in GT1-7. The mRNA expressions of CSN5 and GATA1 were detected by RT-PCR. The mRNA expressions of CSN5 (A) and GATA1 (B) were normalized to control. The results were presented as mean \pm SD (n = 3). **p < 0.01 vs. Control group, ##p < 0.01 vs. HPRL group.



Supplementary Figure 8. Chromatin immunoprecipitation (ChIP) assay on the promoter of GATA1. (A) Representative blot of ChIP assay on GATA1. (B) Quantitative relative binding of GATA1 to CSN5 promoter. The results were presented as mean \pm SD (n = 3). **p < 0.01 vs. Control group, ###p < 0.01 vs. HPRL group.



Supplementary Figure 9. The level of CSN5 in GT1-7 was detected by western blot assay and representative bands were shown in (A). The level of CSN5 (B) was normalized to control. The results were presented as mean \pm SD (n = 3). **p < 0.01 vs. shRNA-NC group.



Supplementary Figure 10. The ubiquitin level of PRLR was measured with Co-IP (n = 3).