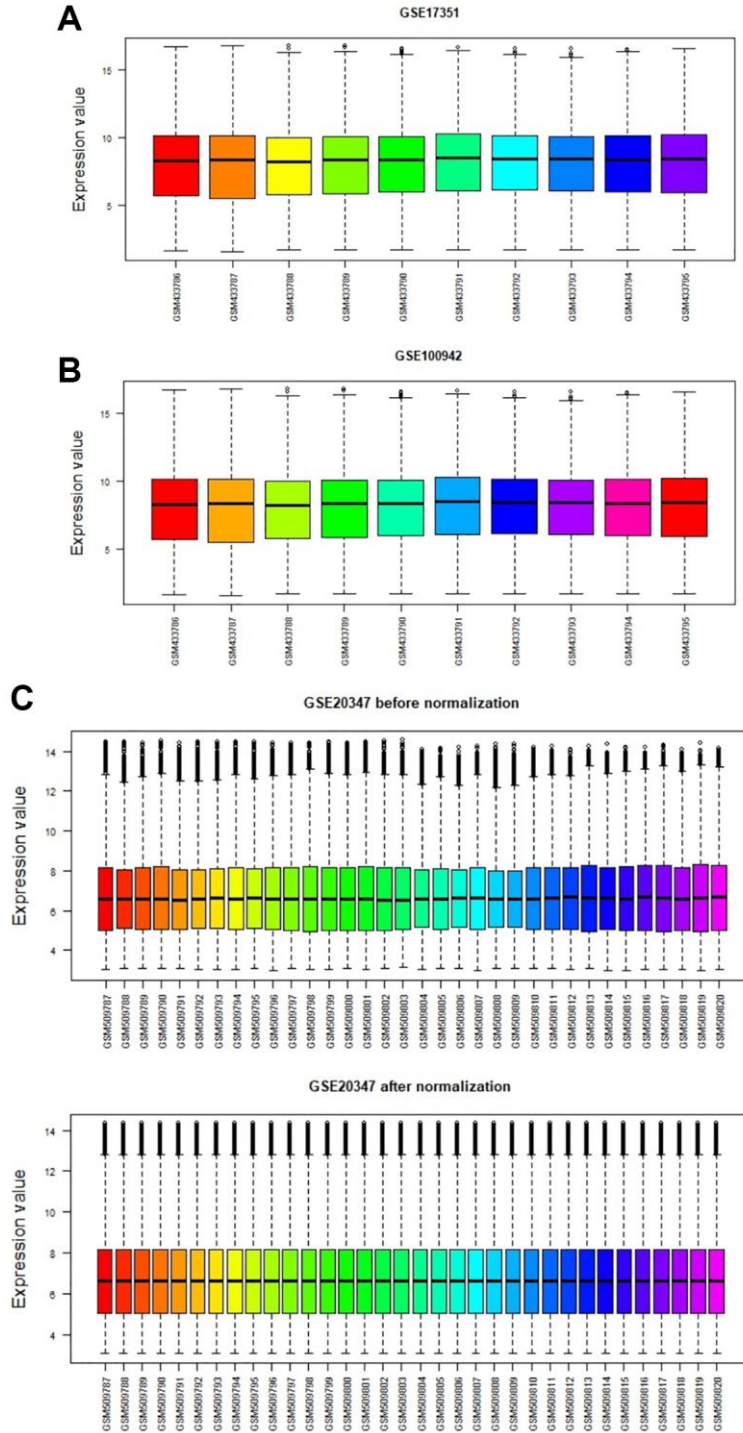
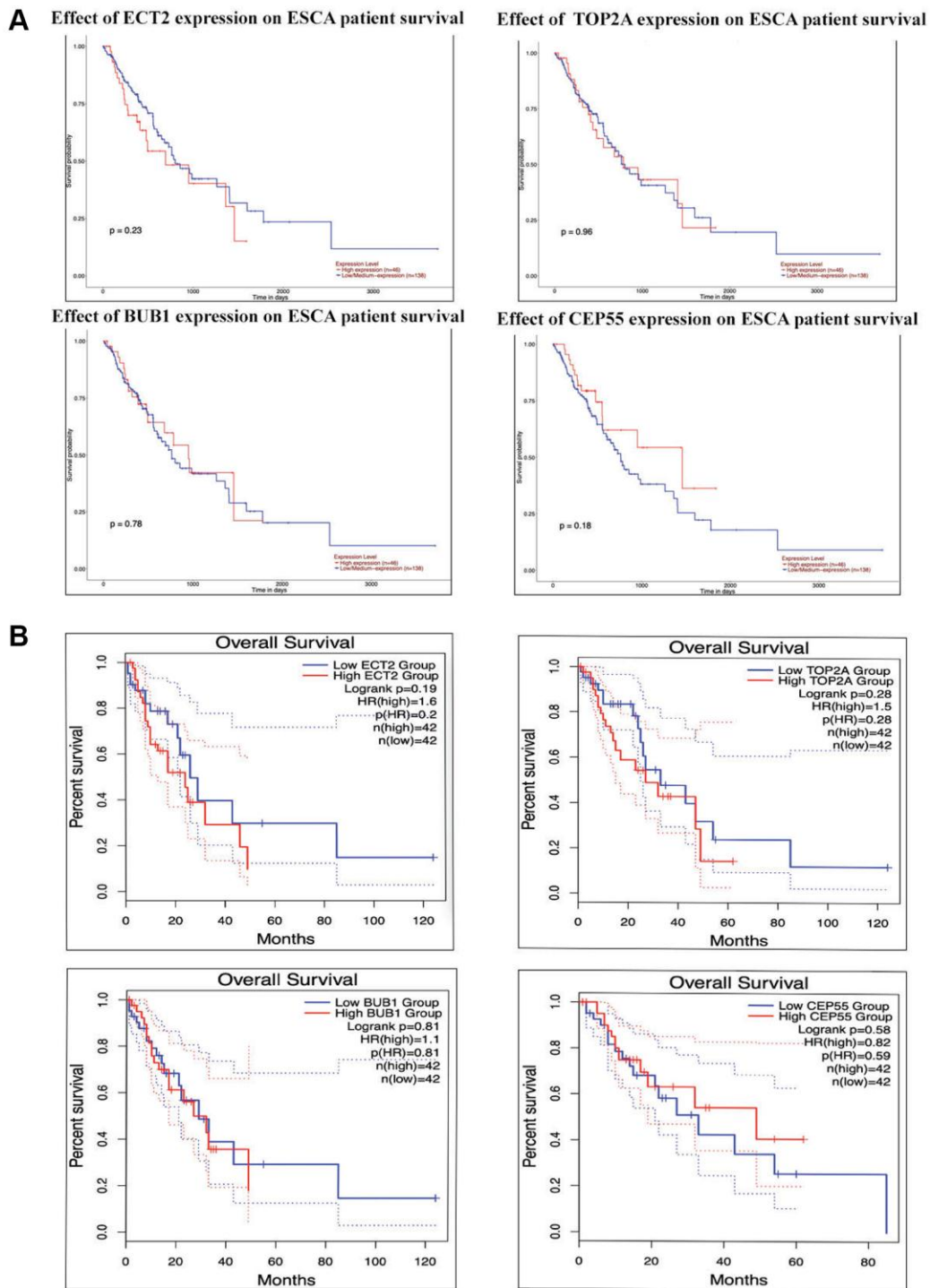


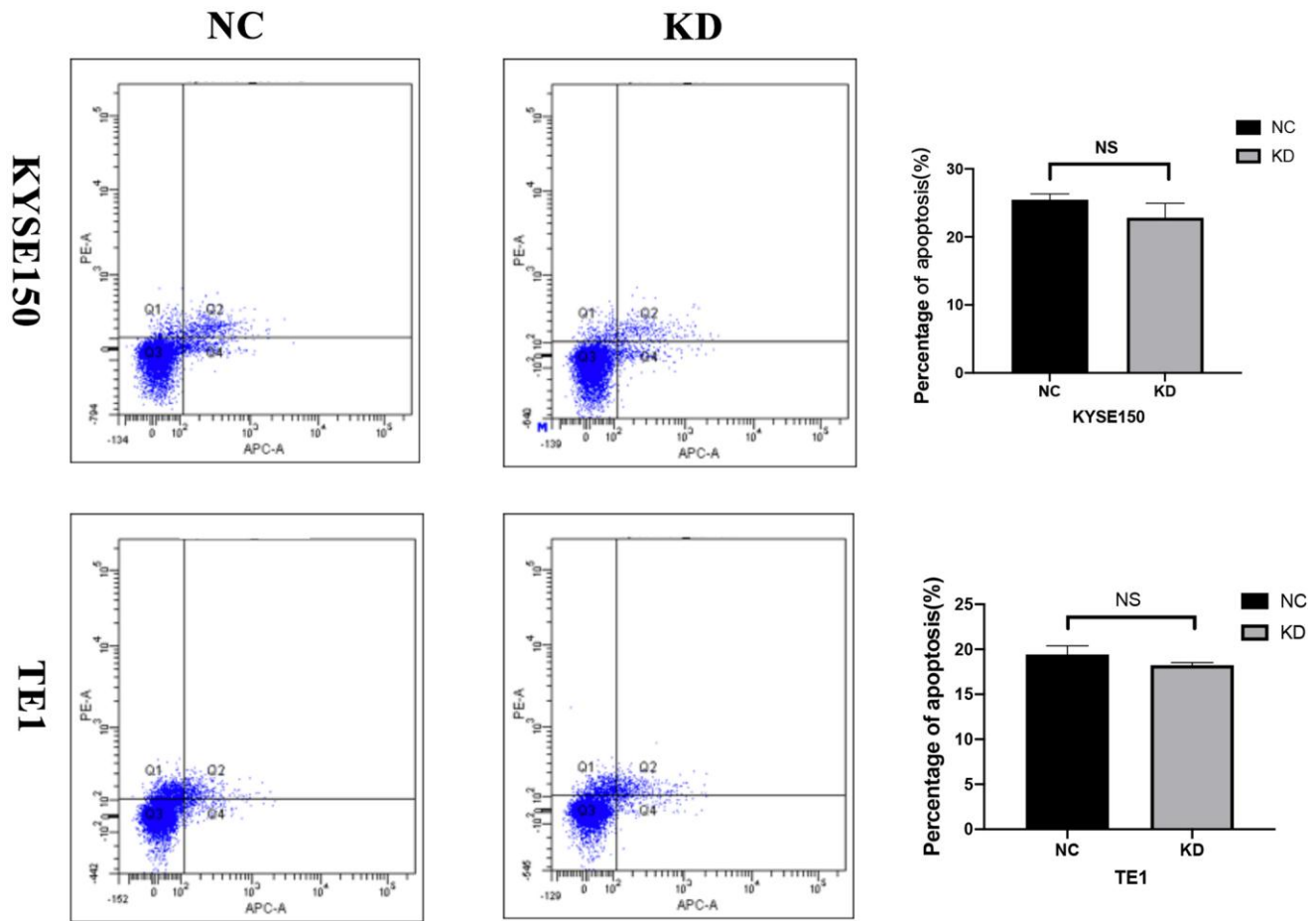
Supplementary Figures



Supplementary Figure 1. Normalization of the three datasets. Including GSE17351 (A), GSE100942 (B), GSE20347 (C).



Supplementary Figure 2. Effects of ECT2, TOP2A, BUB1 and CEP55 expression on OS. The relationship between ECT2, TOP2A, BUB1 and CEP55 expression and OS for patients with ESCC by UALCAN (A) and GEPIA2 (B) analysis.



Supplementary Figure 3. Effects of KIF4A on ESCC cell apoptosis. The Representative images of Annexin V-PE double staining of KYSE-150 and TE-1 cells transfected with control or KIF4A shRNAs for 48 h were determined by flow cytometry. The data are presented as the means \pm SD. NS: No statistically significant difference.