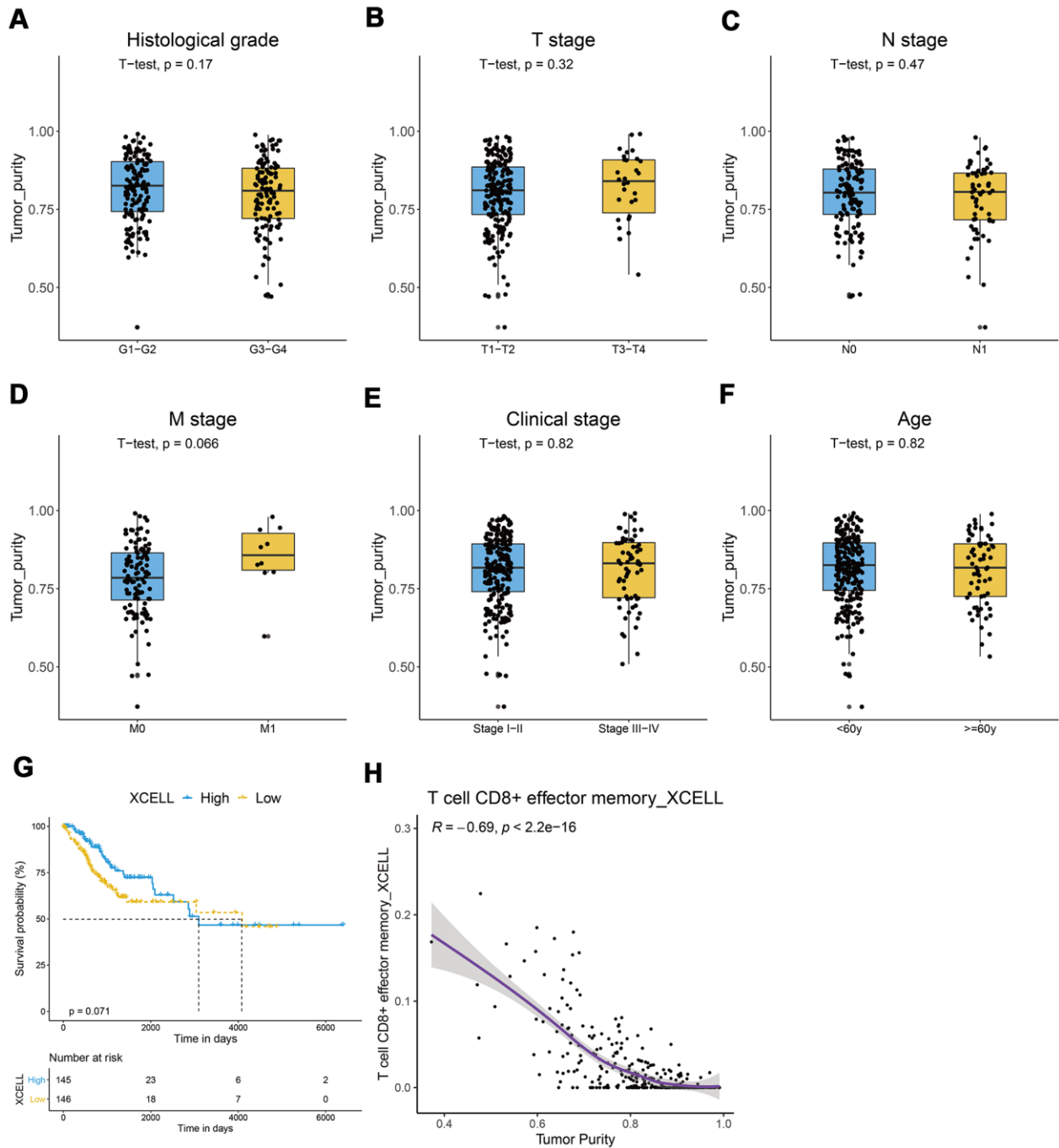
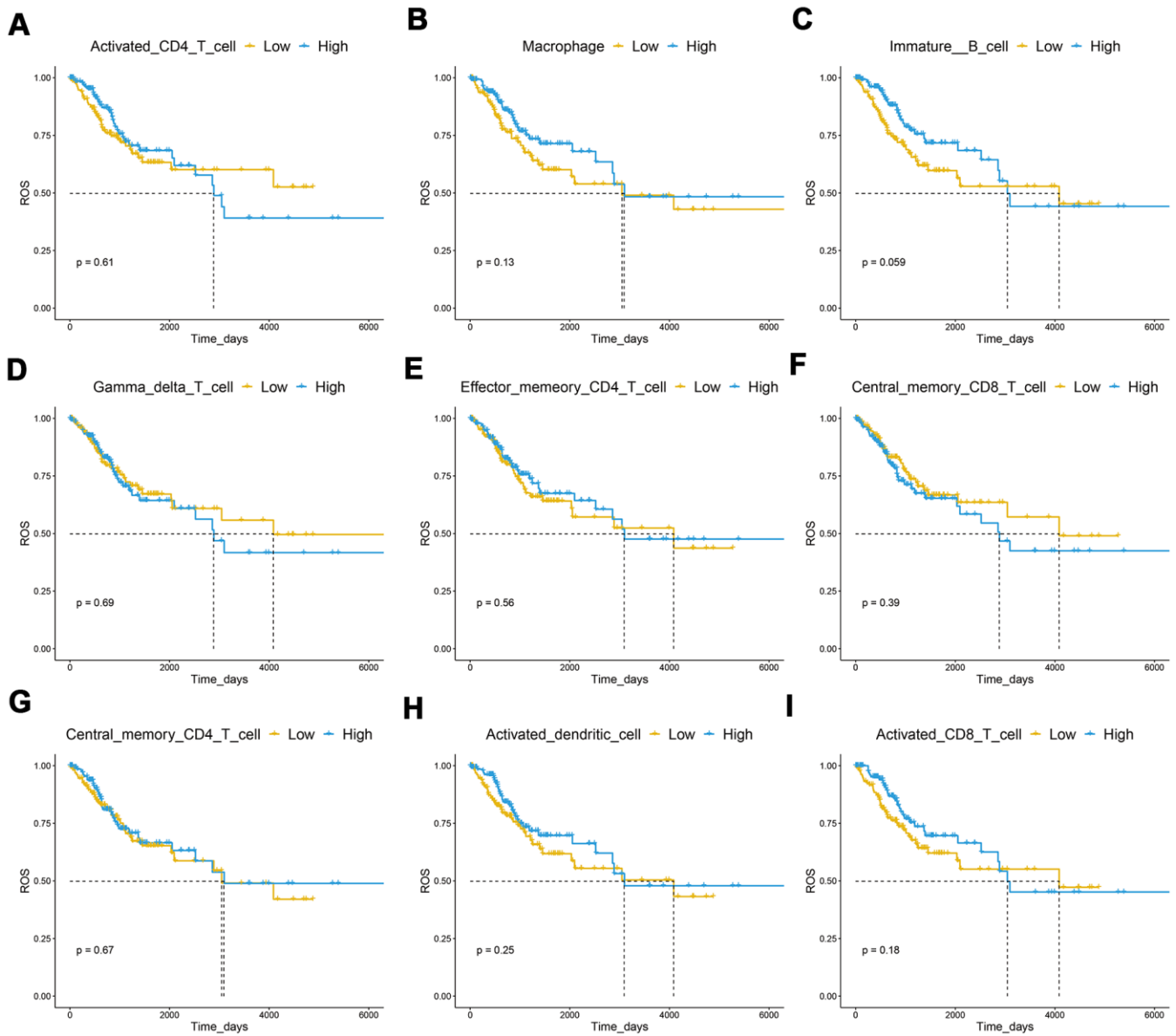


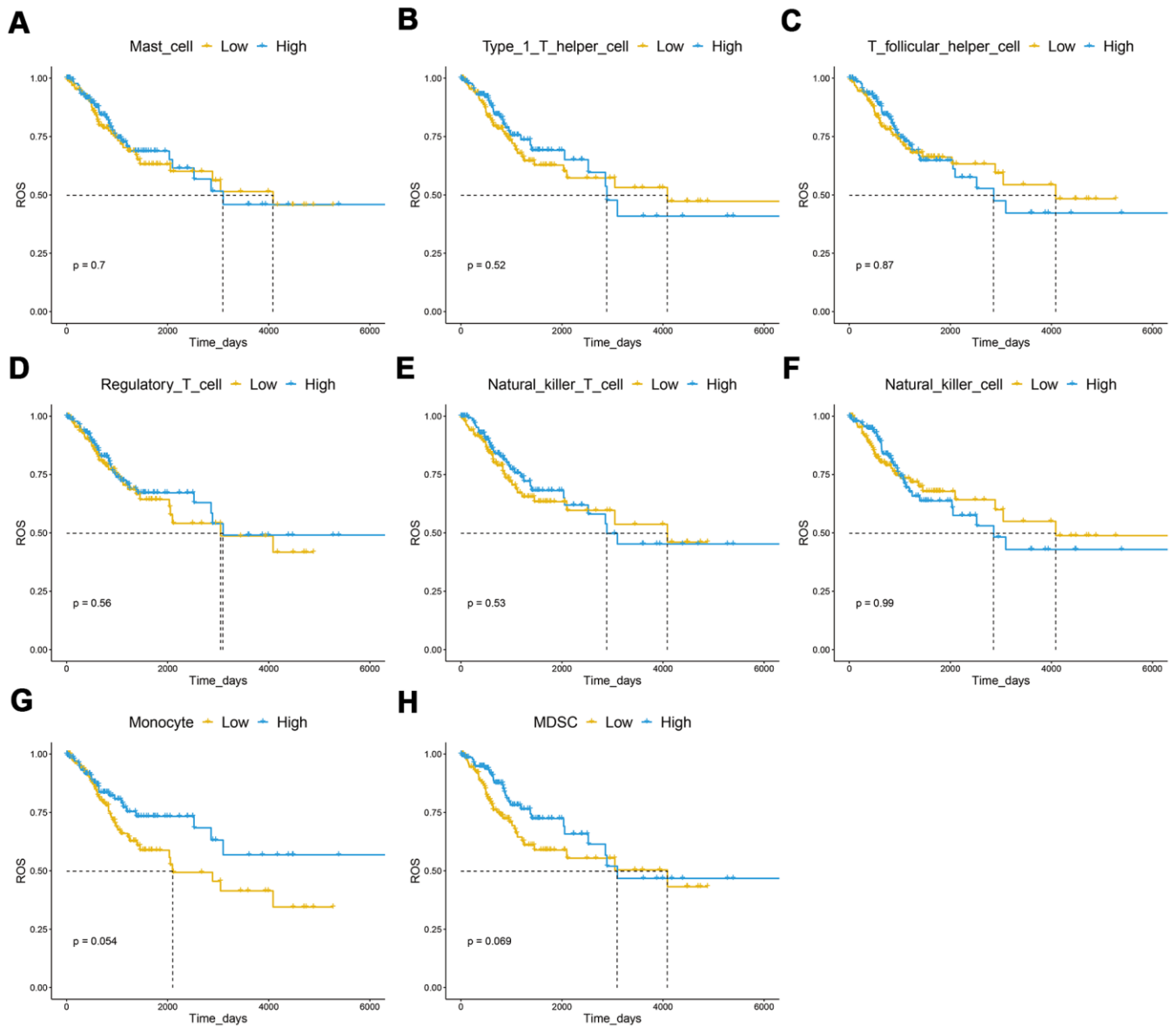
SUPPLEMENTARY FIGURES



Supplementary Figure 1. Correlation between tumor purity and immunity in CESC. (A–F) Tumor purity was not significantly associated with histological grade, TNM stage, clinical stage, and age. **(G)** A Kaplan–Meier analysis suggested that the effect memory CD8 T cell was not significantly associated with CESC prognosis. **(H)** The effect memory CD8 T cell was significantly associated with tumor purity.



Supplementary Figure 2. The correlation between the immune cell infiltration level and OS. (A–I) A Kaplan–Meier analysis showed that activated CD4 T cell, macrophage, immature B cell, gamma delta T cell, effector memory CD4 T cell, central memory CD8 T cell, central memory CD4 T cell, activated dendritic cell, and activated CD8 T cell were not significantly associated with CESC overall survival.



Supplementary Figure 3. The correlation between the infiltration level of immune cells and prognosis. (A–H) A Kaplan–Meier analysis showed that the mast cell, type 1 T helper cell, T follicular helper cell, regulatory T cell, natural killer T cell, natural killer cell, monocyte, and MDSC were not significantly associated with CESC overall survival.