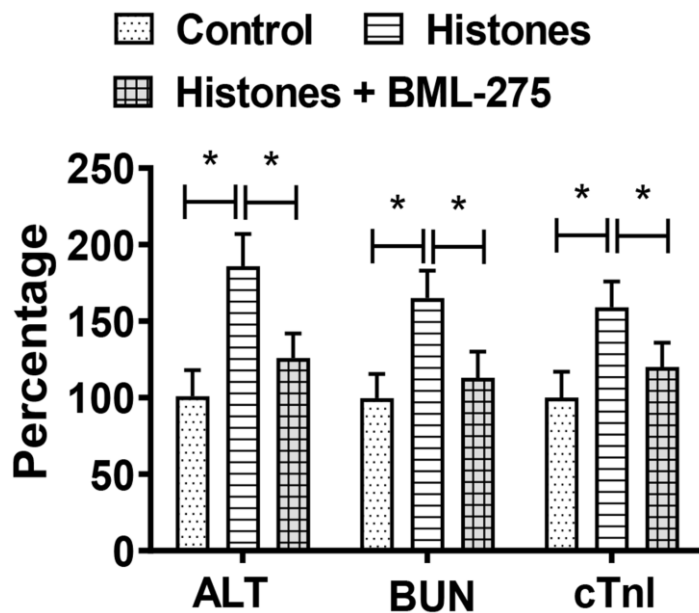
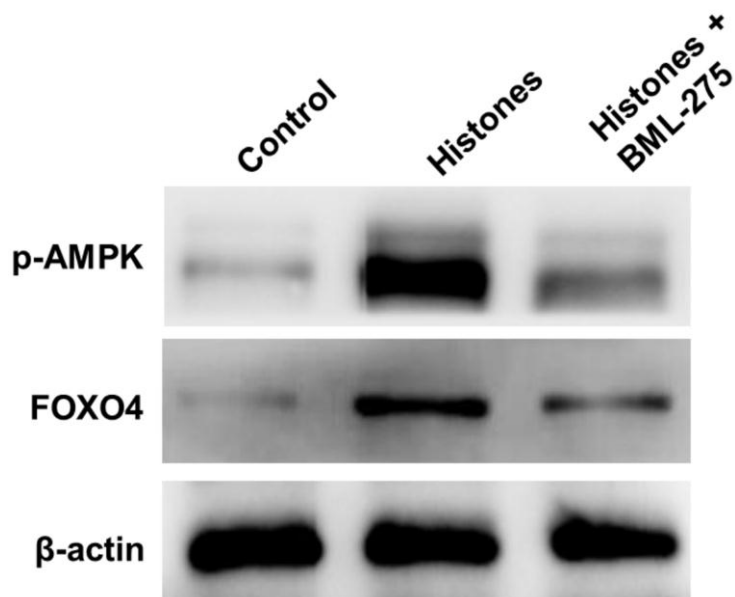


SUPPLEMENTARY FIGURES



Supplementary Figure 1. ELISA detected the amount of organ injury markers in blood of mice. Changes of organ injury markers are presented as percentage by setting that without treatment as 100%. Means \pm SD are presented; Student's *t*-test, **P* < 0.05 vs. the corresponding control.



Supplementary Figure 2. Western blotting detected the AMPK/FOXO4 pathway proteins level vascular tissues of mice after histones or histones + BML-275 treatment.