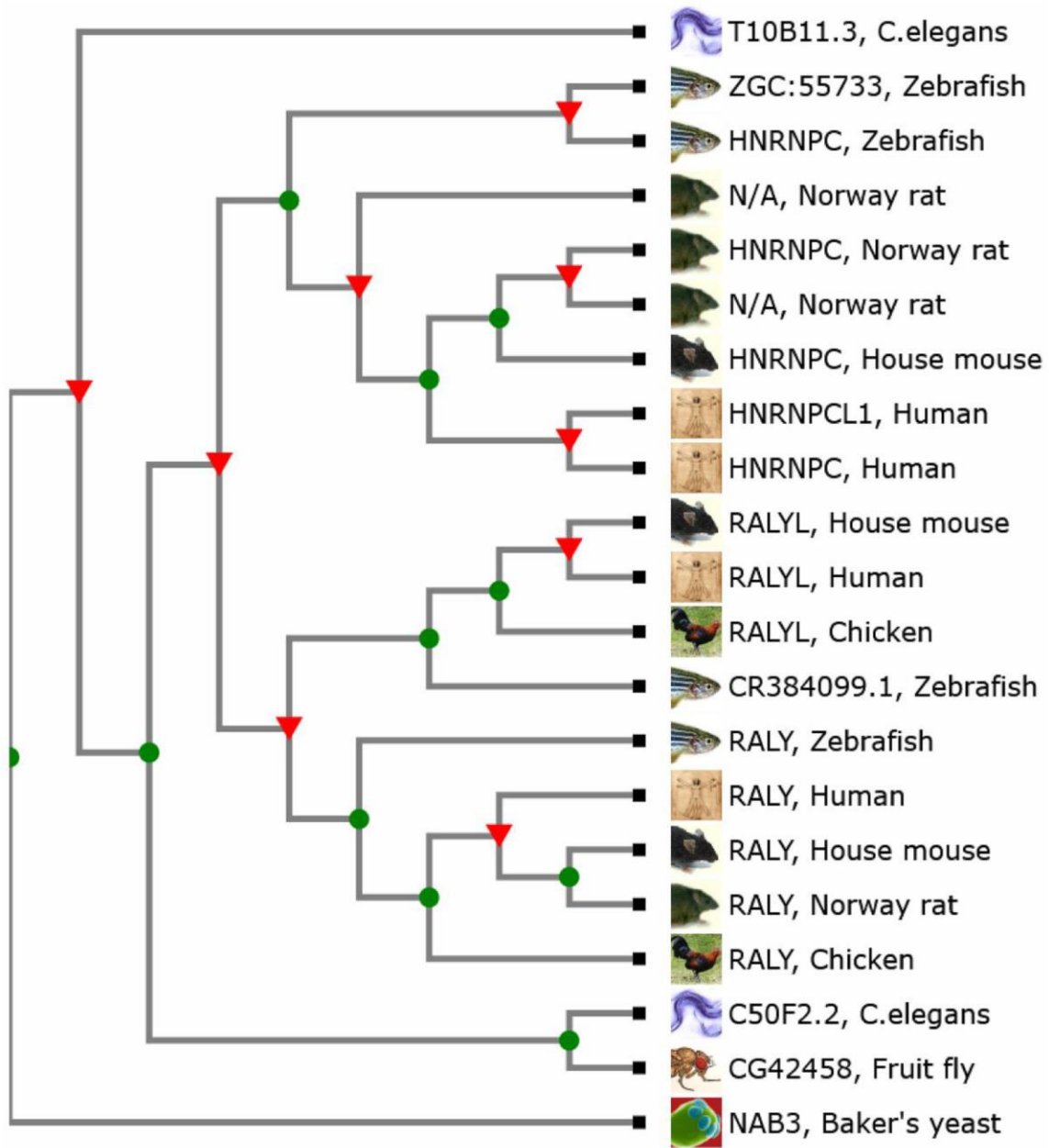
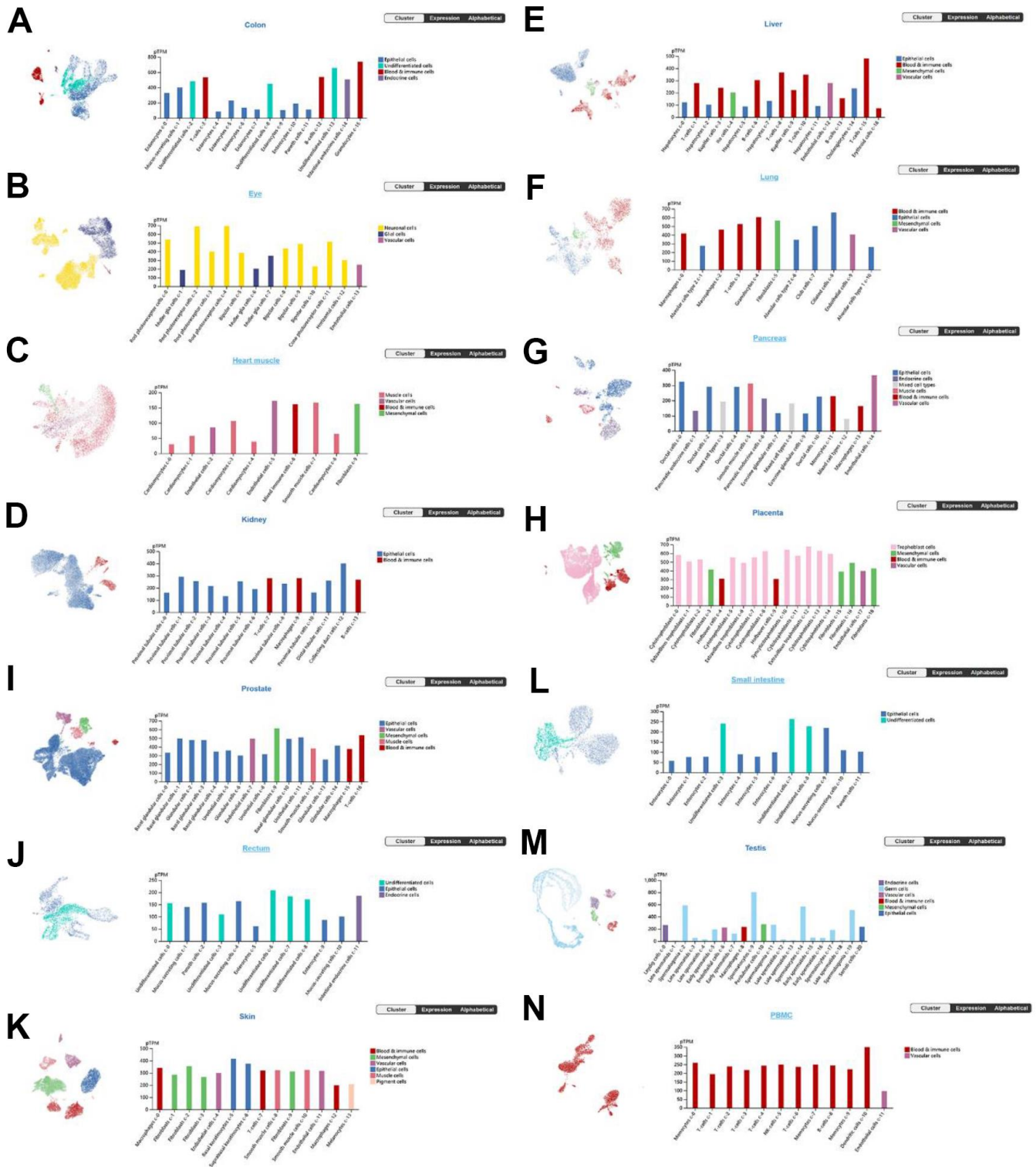


SUPPLEMENTARY FIGURES



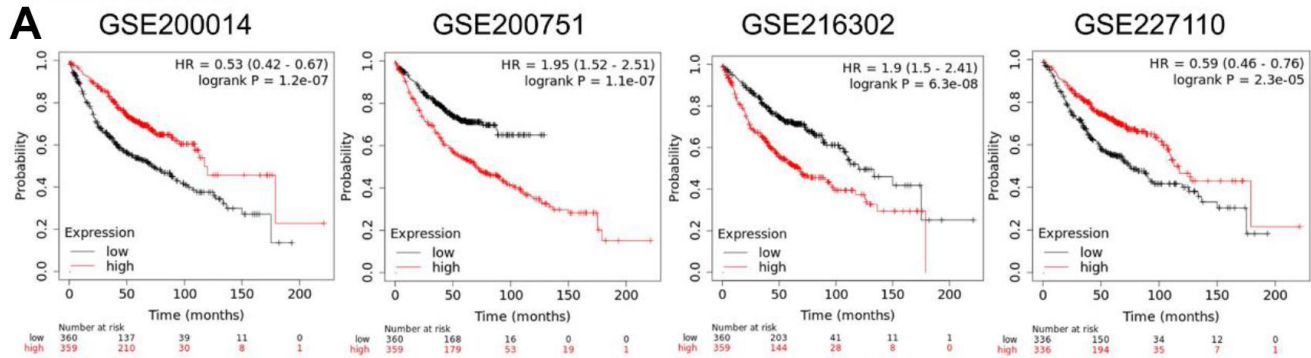
Supplementary Figure 1. Analysis the gene tree about HNRNPC in different races by TreeFam web (<http://www.treefam.org>).



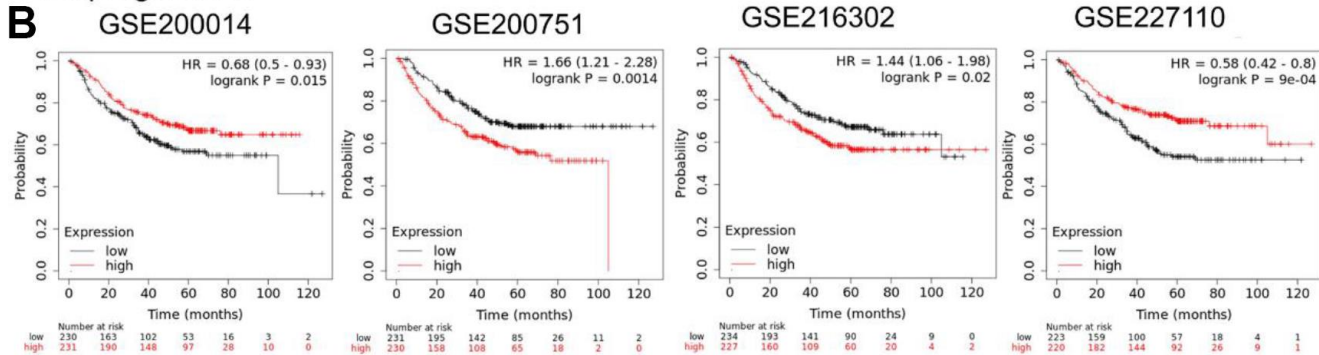
**Supplementary Figure 2. Analysis the single cell types atlas in different organs by HPA database. (A) Colon, (B) Eye, (C) Heart muscle, (D) Kidney, (E) Liver, (F) Lung, (G) Pancreas, (H) Placenta, (I) Prostate, (J) Rectum, (K) Skin, (L) Small intestine, (M) Testis, (N) PBMC.**

# Lung adenocarcinoma

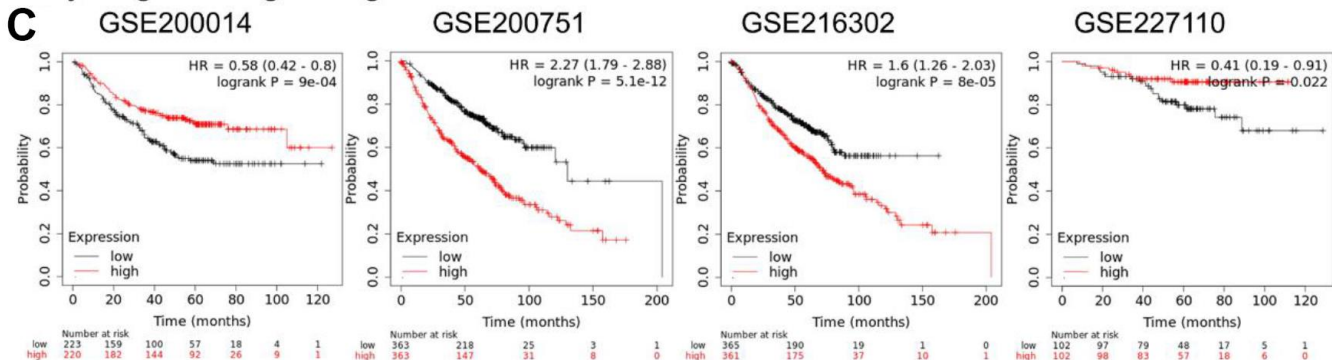
## Overall survival



## First progression

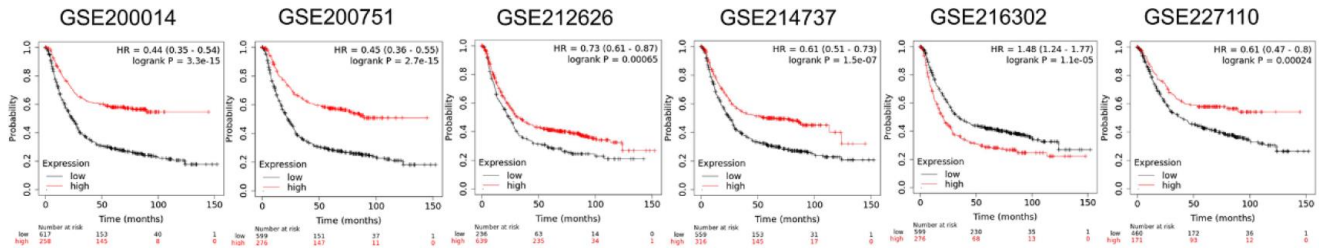


## Only surgical margins negative

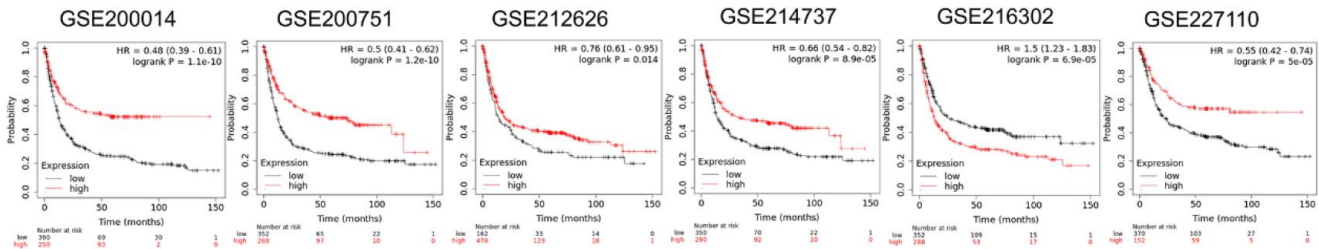


**Supplementary Figure 3.** Relationship between HNRNPC expression and prognosis of Lung adenocarcinoma, including (A) Overall survival progression, (B) First progression and (C) Only surgical margins negative progression.

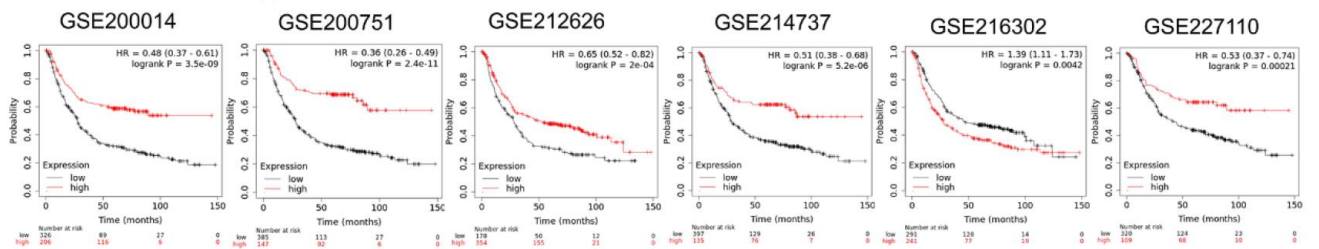
**A** Gastric cancer  
Overall survival



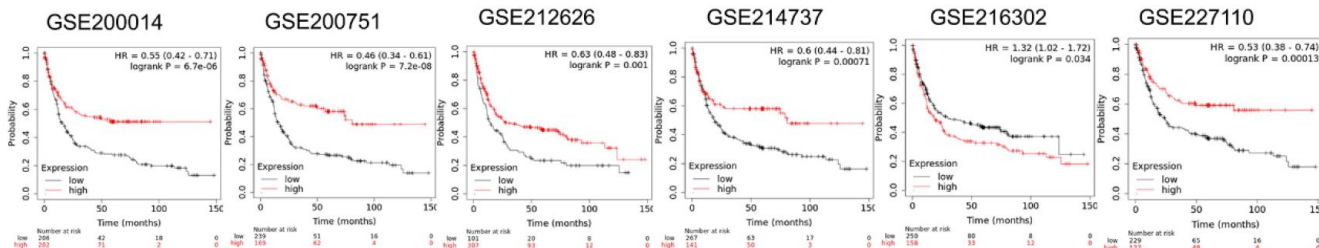
**B** Gastric cancer  
First Progression



**C** Gastric cancer  
Overall survival-Her-2(-)



**D** Gastric cancer  
First Progression-Her-2(-)



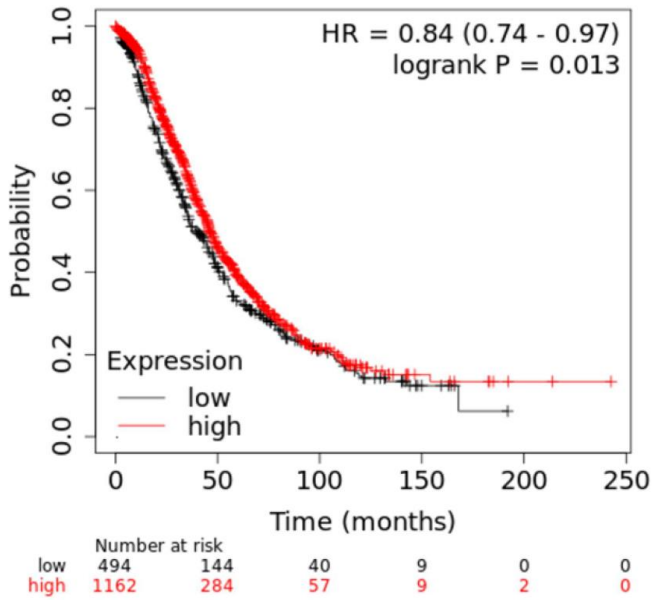
**Supplementary Figure 4.** Relationship between HNRNPC expression and prognosis of Gastric cancer, including (A) Overall survival progression, (B) First progression, (C) Overall survival progression-Her-2 and (D) First progression-Her-2.



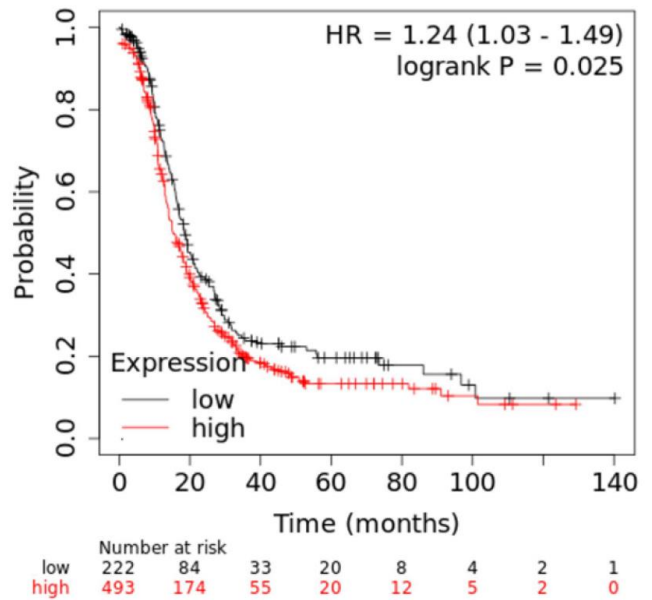
# Ovarian cancer

GSE200751

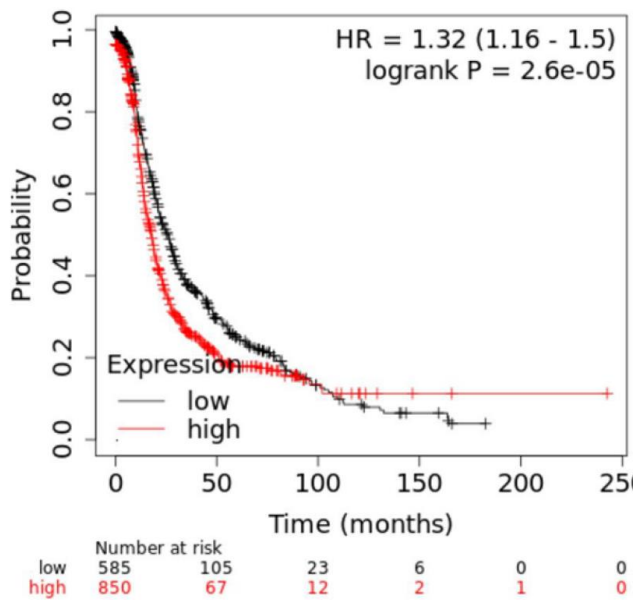
## Overall survival



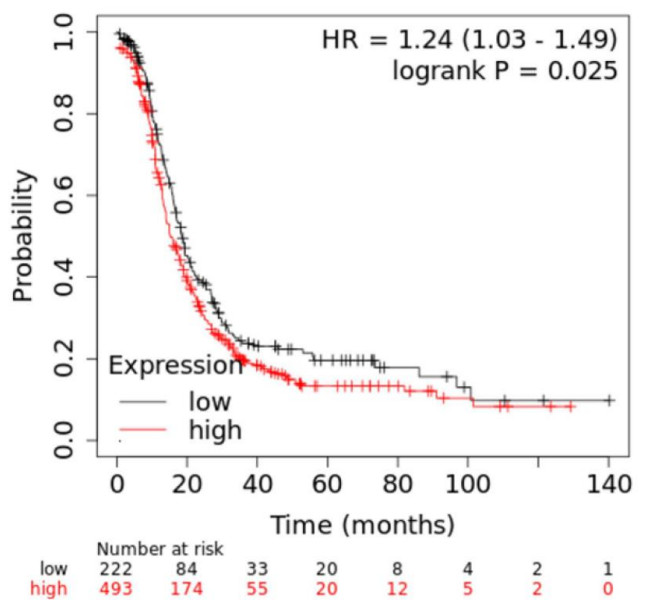
## OS-Chemotherapy Taxol



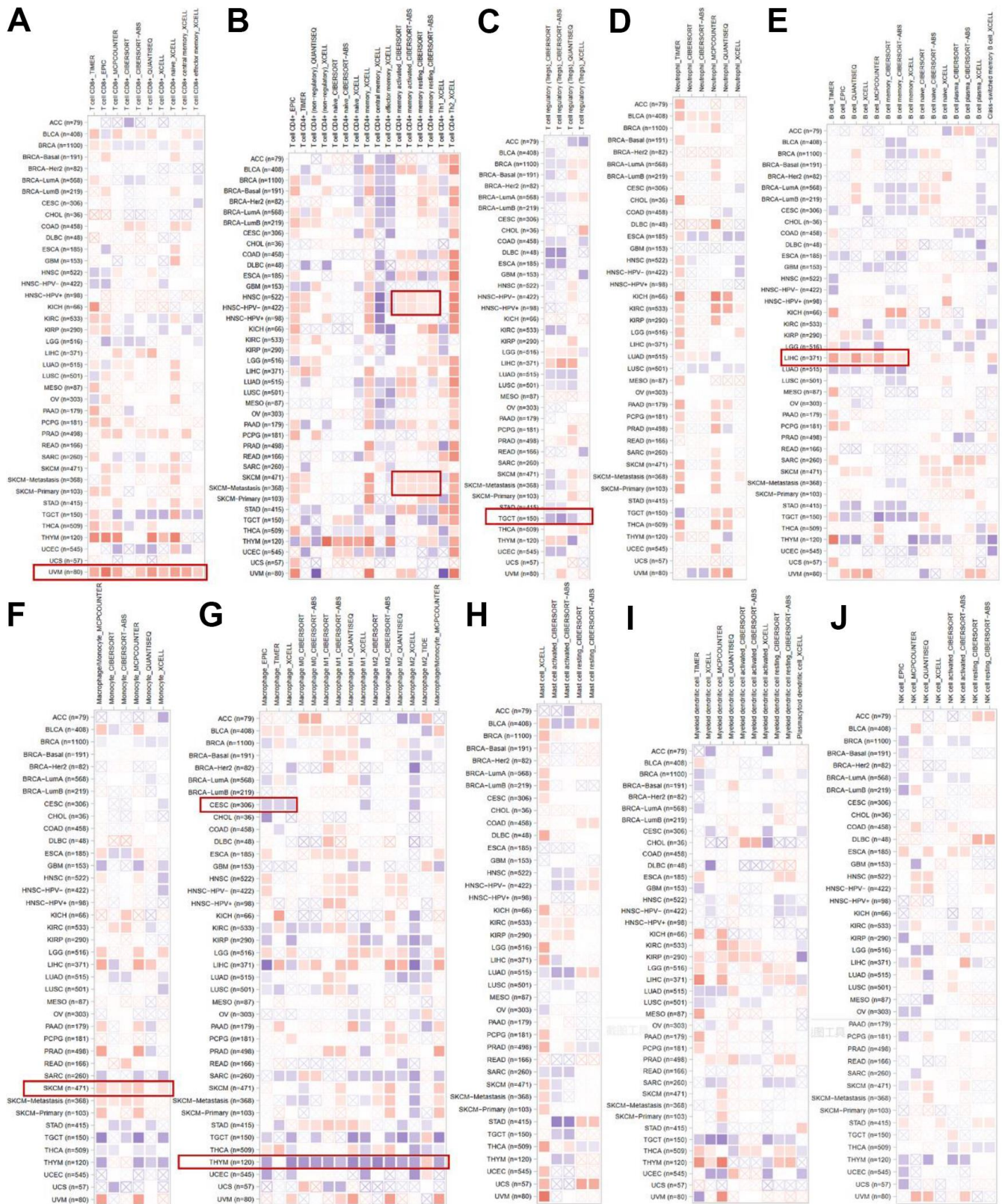
## Progression free survival



## PFS-Chemotherapy Taxol



Supplementary Figure 5. Relationship between HNRNPC expression and prognosis of ovarian cancer.



**Supplementary Figure 6.** Some algorithms were used to explore the potential correlation between immune cells and cancer in TCGA, such as (A) CD4+ T cell, (B) CD4+ T cell, (C) regulatory T cell, (D) Neutrophil, (E) B cell, (F) Monocyte, (G) Macrophage, (H) Mast cell, (I) Myeloid dendritic cell, (J) NK cell.