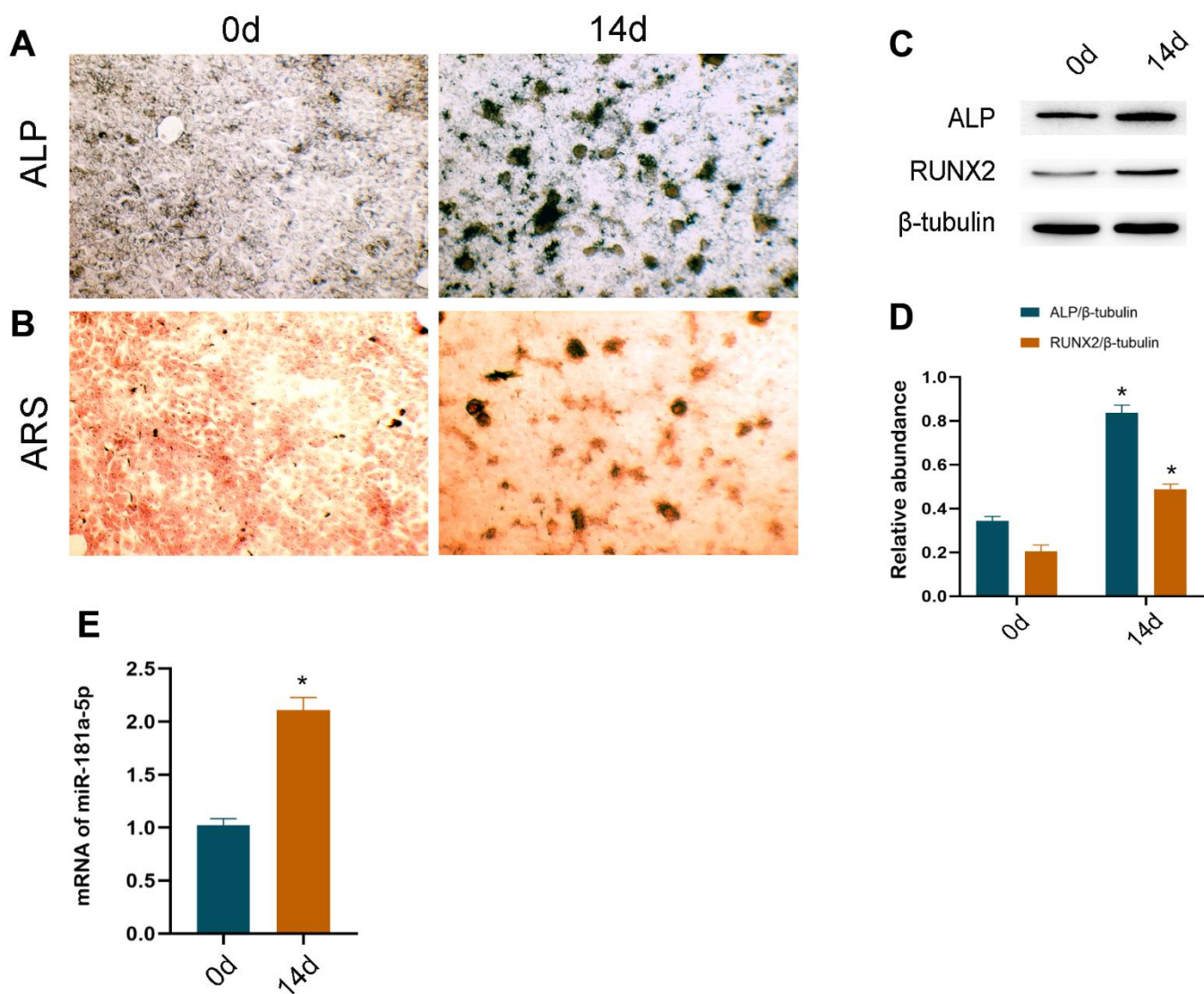


SUPPLEMENTARY FIGURE



Supplementary Figure 1. Osteogenesis induced model in MC3T3-E1 cells. (A, B) ALP and ARS staining of MC3T3-E1 wild type cells at the start point (0 day) and end point (14 days). (C, D) ALP, RUNX2 and beta-tubulin are determined and quantified by densitometric evaluation of western blots, further normalized to beta-tubulin. (E) expression of miR-181a-5p in MC3T3-E1 cells induced for osteogenic differentiation. All data represent mean \pm s.e.m. (n = 6). *P<0.05 compared to day 0.