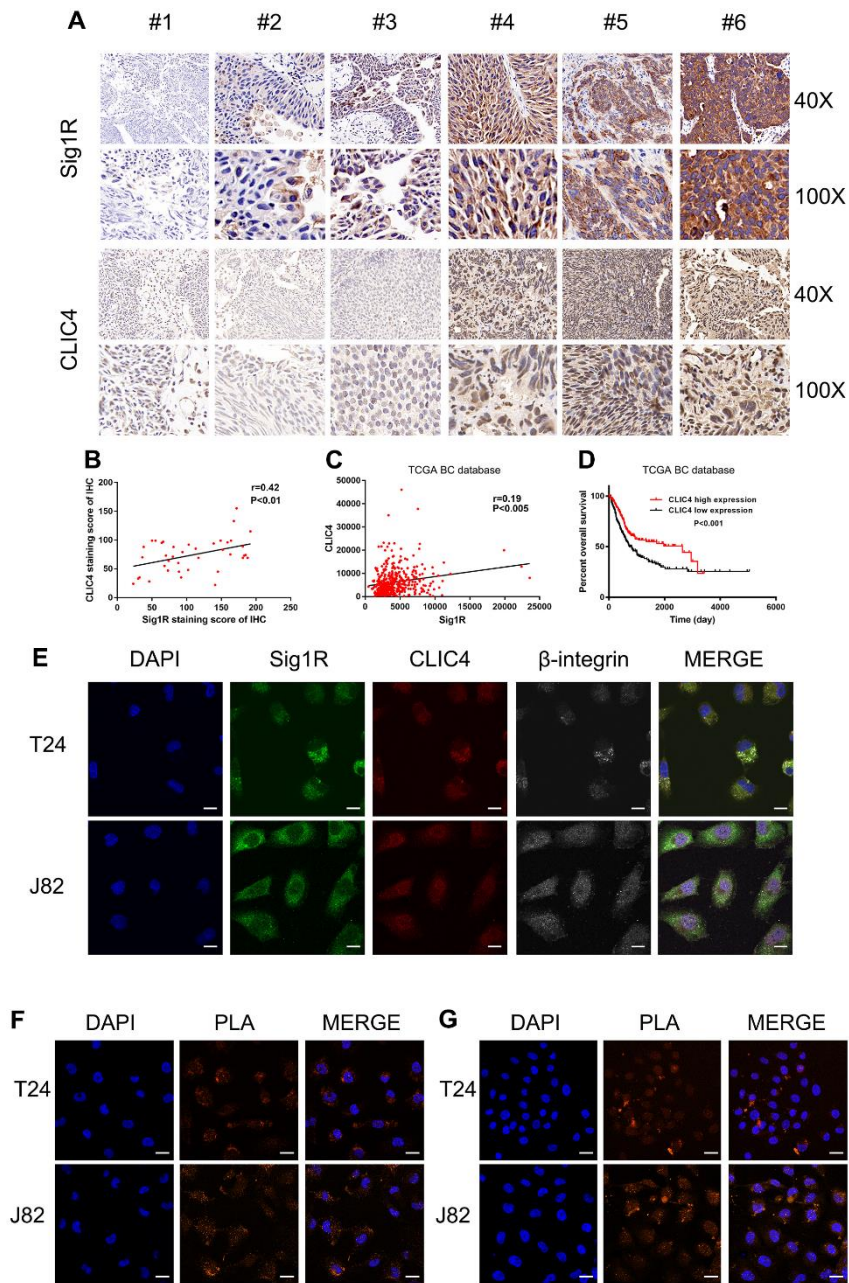


SUPPLEMENTARY FIGURE



Supplementary Figure 1. The expression of Sig1R and CLIC4 is positively correlated, and they interact with each other. (A) Six pairs of representative immunohistochemical pictures are shown. (B) Immunohistochemistry was conducted to evaluate the expression of CLIC4 in bladder cancer tissues (n = 40) with low or high Sig1R expression using the H-score semi-quantitative approach. Representative images and corresponding statistical plots (Pearson’s correlation coefficients) were presented. (C) TCGA bladder cancer RNAseq dataset indicated that Sig1R was positively associated with CLIC4 in bladder cancer tissues. (D) The Kaplan-Meier plot of overall survival in the TCGA cohort is shown according to CLIC4 expression. (E) Immunofluorescence staining analysis showed the colocalization of CLIC4, β -integrin, and Sig1R in T24 and J82 cells, scale bar = 20 μ m. (F) Duolink *In Situ* PLA show that there is a direct interaction between CLIC4 and β -integrin (orange point), scale bar = 20 μ m. (G) Duolink *In Situ* PLA show the direct interaction between Sig1R and CLIC4 (orange point), scale bar = 20 μ m.