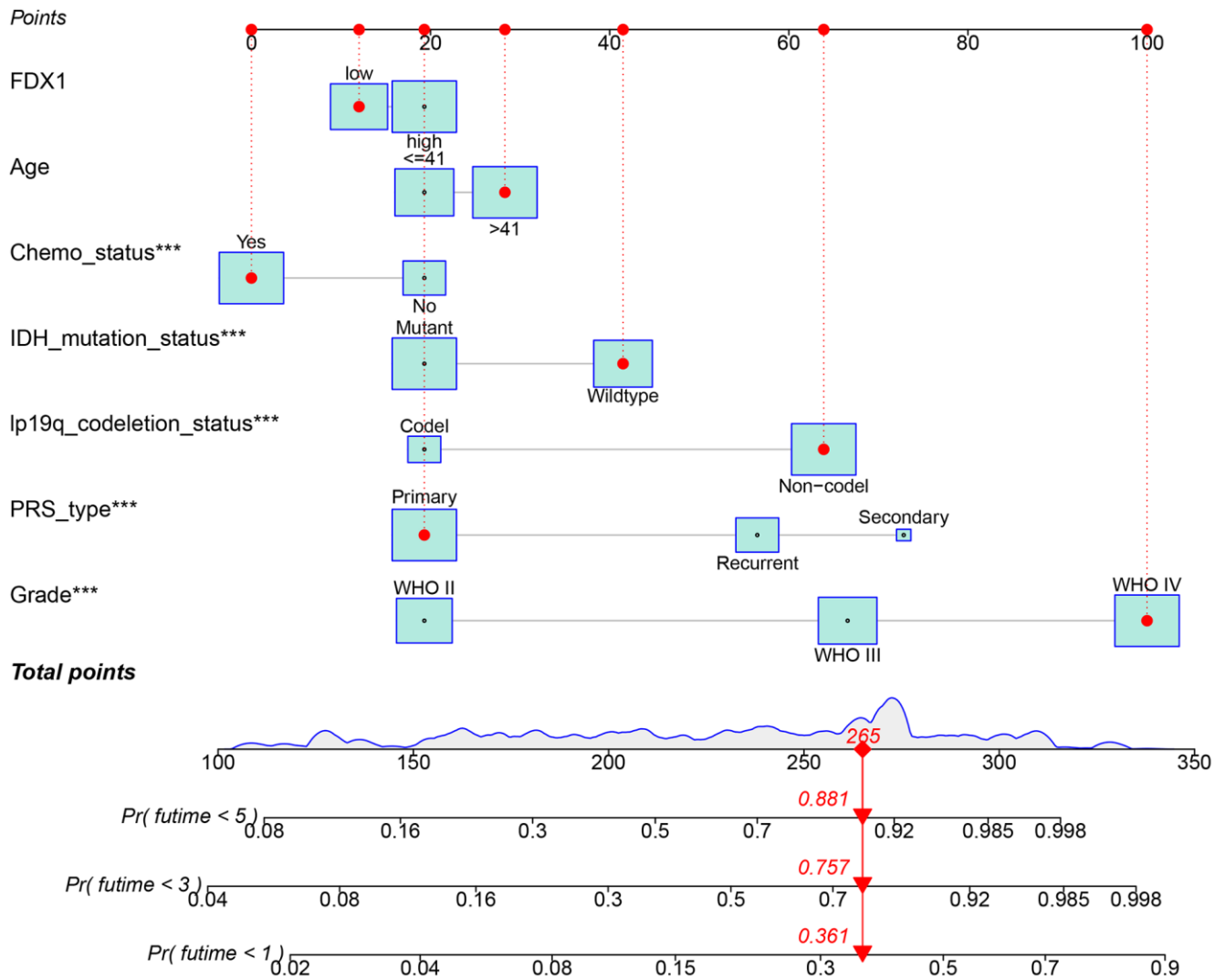
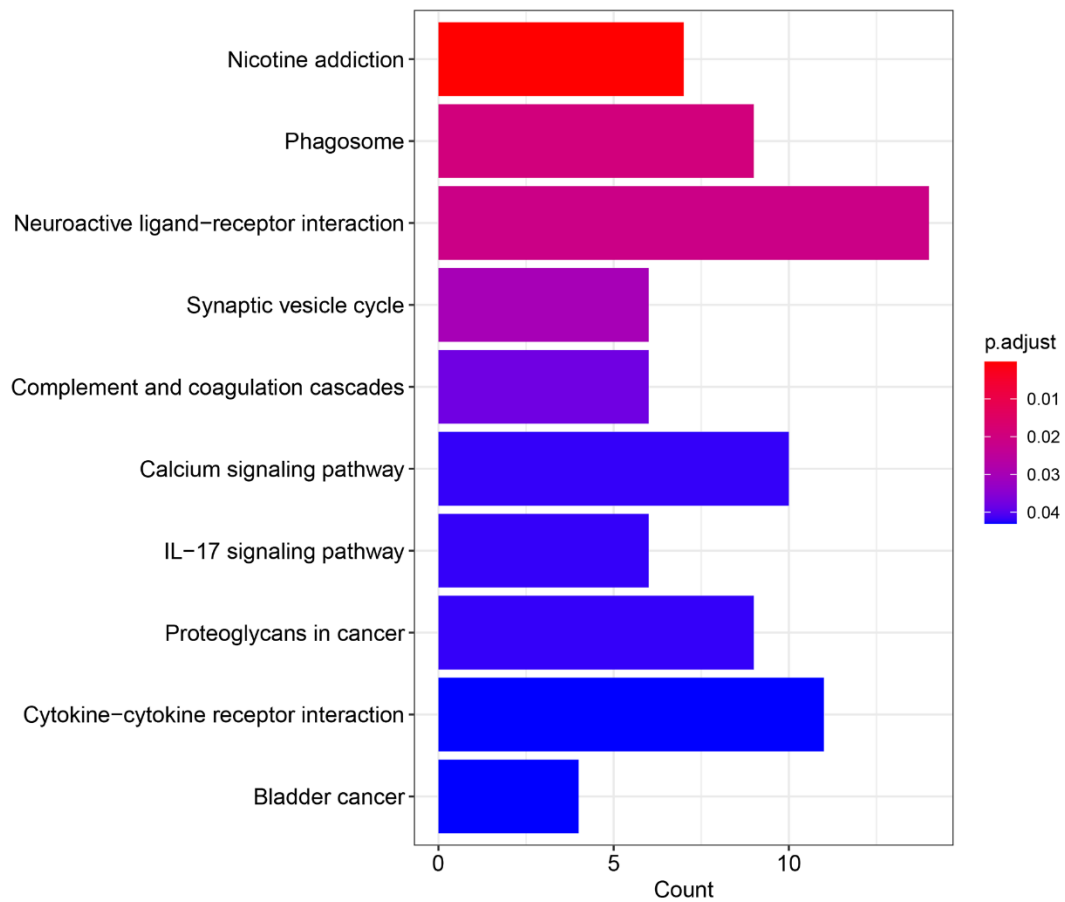


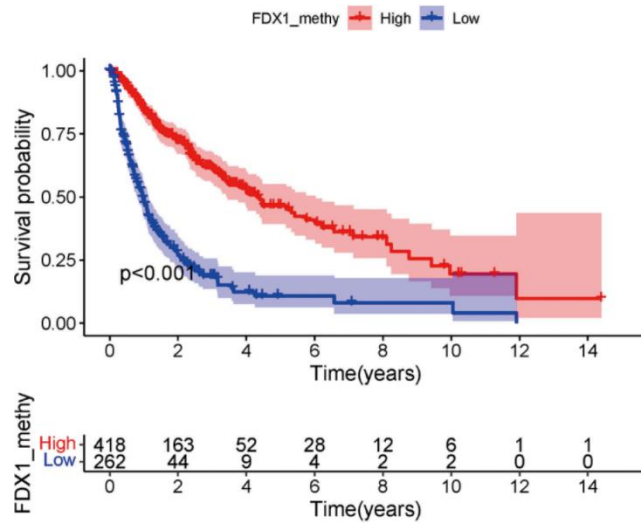
SUPPLEMENTARY FIGURES



Supplementary Figure 1. Nomogram of FDX1 and clinical parameters for predicting prognosis of glioma patients.



Supplementary Figure 2. KEGG pathway analysis for differentially expressed genes between high- and low-FDX1 expression groups.



Supplementary Figure 4. Correlation of FDX1 methylation level with clinical prognosis.