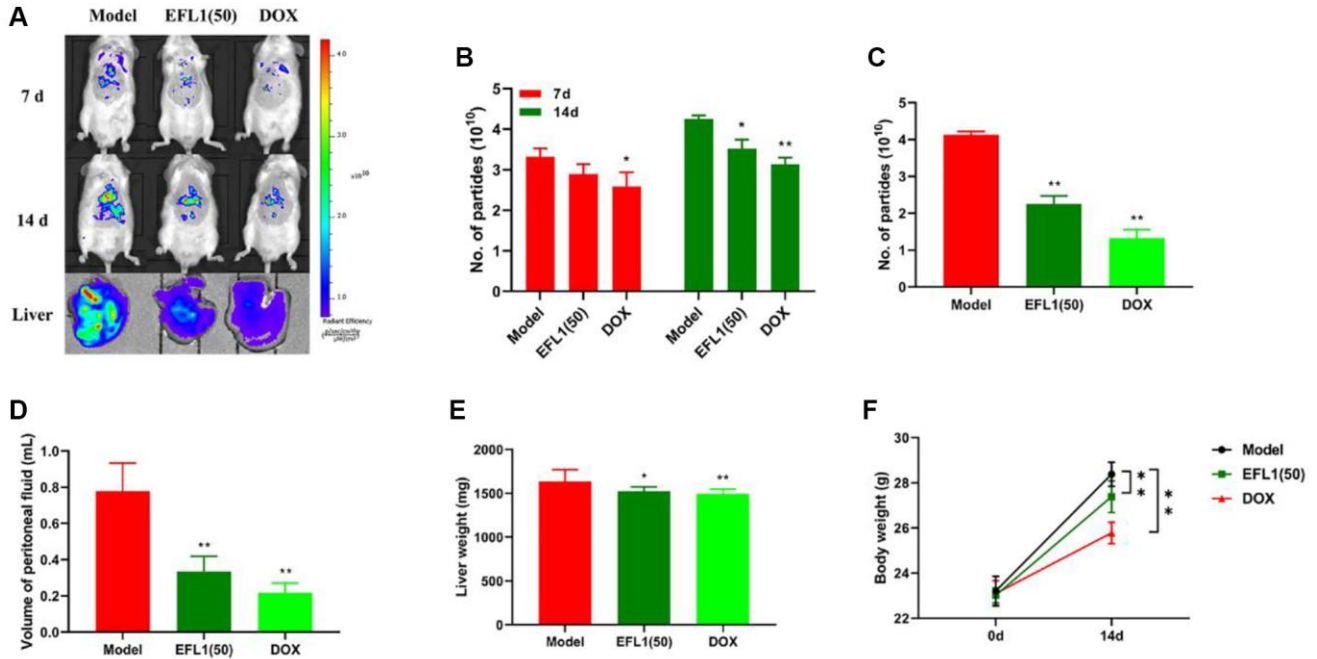
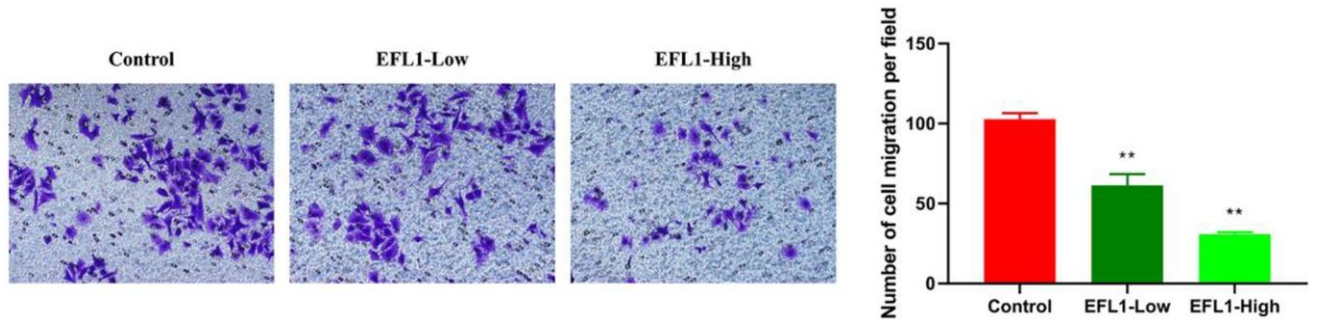


SUPPLEMENTARY FIGURES



Supplementary Figure 1. EFL1 alleviates liver metastasis of *in situ* breast cancer. Treatment with EFL1 or DOX for 2 weeks significantly decreased metastatic luciferase signals (A–C, $n = 3$), peritoneal fluid (D, $n = 9$), liver weight (E, $n = 9$) and body weight (F, $n = 9$) of mice with 4T1-LUC breast cancer. Data were compared using two-way ANOVA with Tukey’s post hoc (B, F) or one-way ANOVA with Dunnett’s post hoc (C–E). ** $P < 0.01$. Abbreviations: ns: not significant. * $P < 0.05$, ** $P < 0.01$ vs. Model.



Supplementary Figure 2. EFL1 decreases the migration of 4T1 cells co-cultured with CD3+ T cells. 4T1 cells were co-cultured with CD3+ T cells for 48 h with or without EFL1-containing serum. Cell mitigation was observed under a microscope. Treatment with EFL1-containing serum greatly decreased the number of mitigating 4T1 cells. $n = 3$. Data were compared using one-way ANOVA with Dunnett’s post hoc. ** $P < 0.01$ vs. Control.