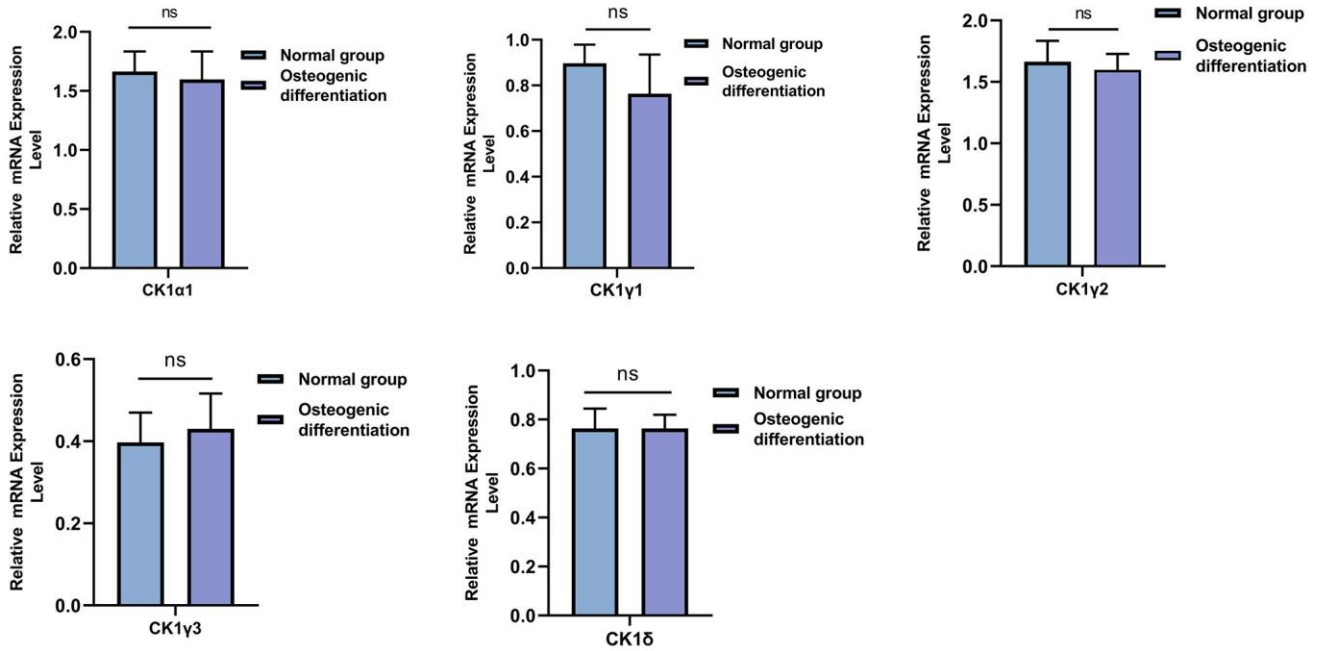
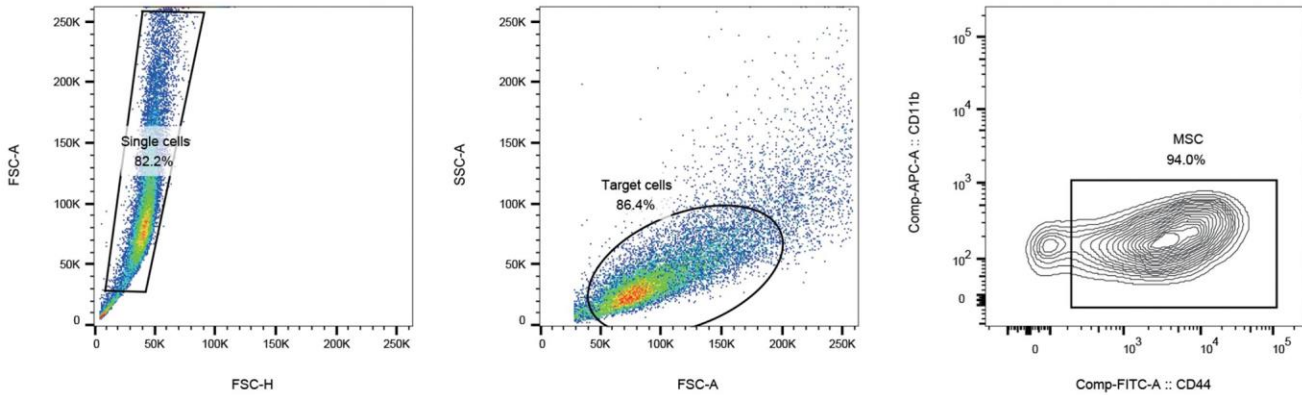


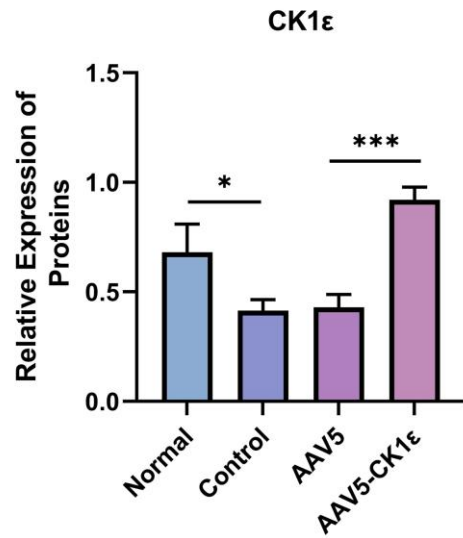
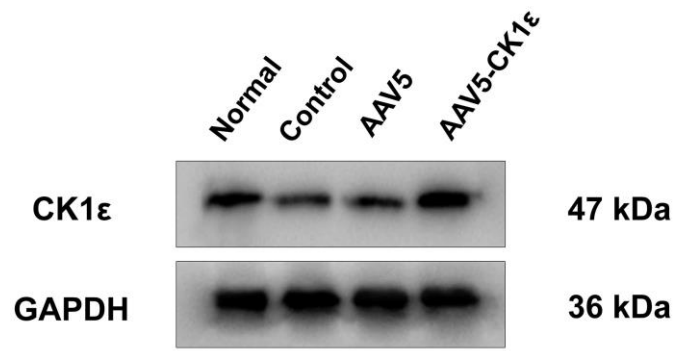
SUPPLEMENTARY FIGURES



Supplementary Figure 1. The related mRNA expression levels of CK1 family members were detected by qRT-PCR analysis, after two weeks of incubation ($n = 3$). The experiments in this figure were repeated three times, and similar results were obtained. The student's t -test was used for statistical analysis. * $P < 0.05$; ** $P < 0.01$; * $P < 0.001$; Abbreviations: ns: not statistically significant.**



Supplementary Figure 2. Identification of rat BMSCs. CD44 and CD11b (biomarkers of OD) were examined by flow cytometry.



Supplementary Figure 3. CK1ε relative protein expression level and quantitative analysis ($n = 5$). The data are presented as the means \pm SD of independent experiments. The one-way ANOVA was used. * $P < 0.05$; ** $P < 0.01$; *** $P < 0.001$; Abbreviations: ns: not statistically significant.