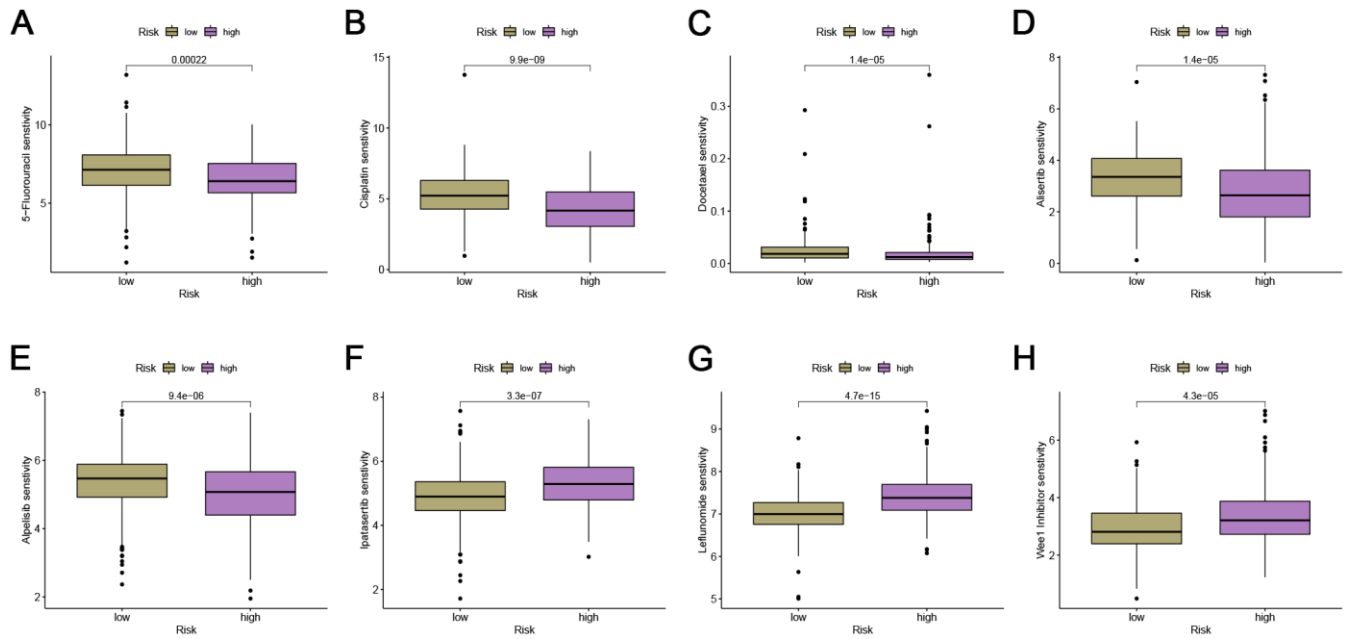
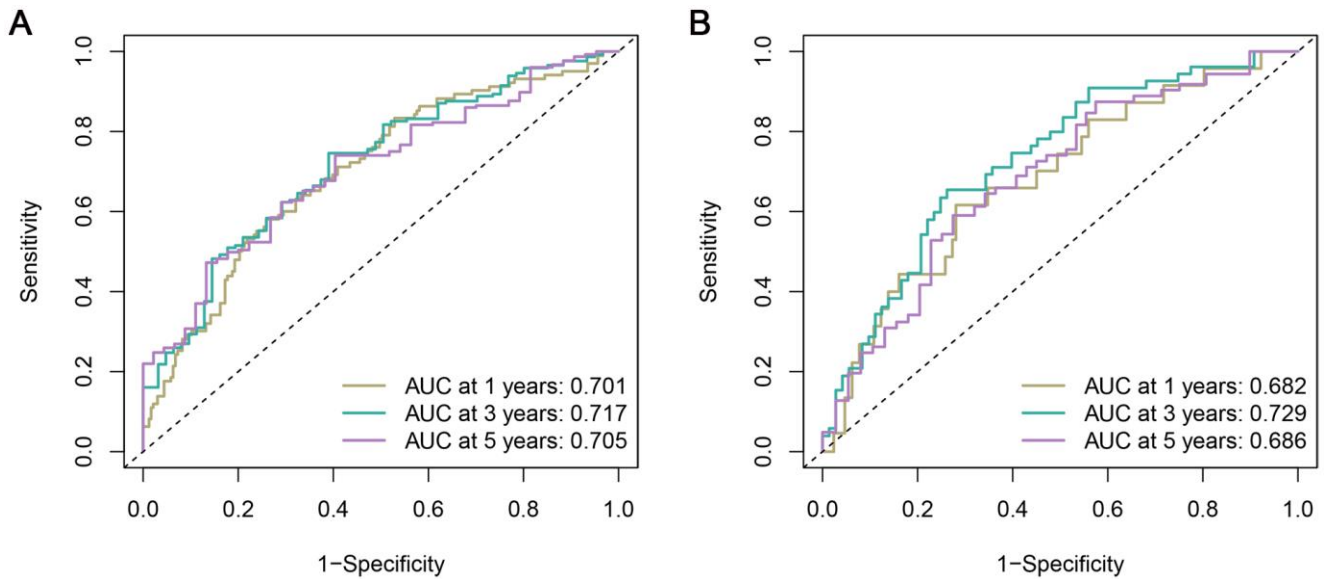


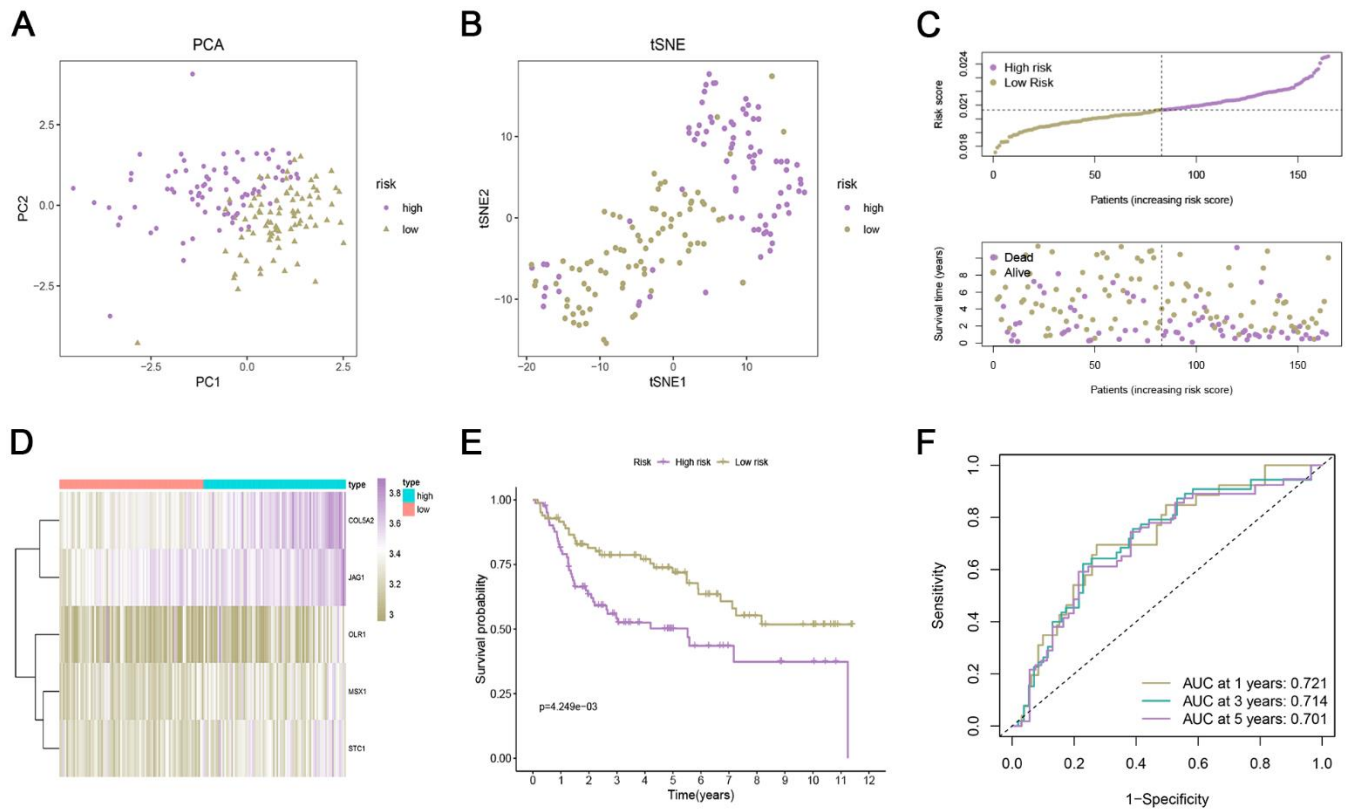
SUPPLEMENTARY FIGURES



Supplementary Figure 1. Prediction of sensitivity to common chemotherapy drugs in patients with bladder cancer by ARG signature. Boxplots of scaled IC50 values of (A) 5-Fluorouracil, (B) cisplatin, (C) docetaxel, (D) alisertib, (E) alpelisib, (F) ipatasertib, (G) leflunomide, (H) Wee1 Inhibitor.



Supplementary Figure 2. The ROC curves for the prediction of 1, 3, and 5-year OS in the TCGA (A) and GEO sets (B).



Supplementary Figure 3. Verification of an angiogenesis-related risk model in the GSE13507 set. (A, B) PCA and t-SNE analyses based on risk scores. (C) The distribution of ARG_score and survival status of bladder cancer patients with increased ARG_score. (D) Heatmap for the expression of six crucial genes. (E) The KM curve for the ARG_score in predicting the OS of bladder cancer patients. (F) ROC curve to show the sensitivity and specificity of the prognosis model.