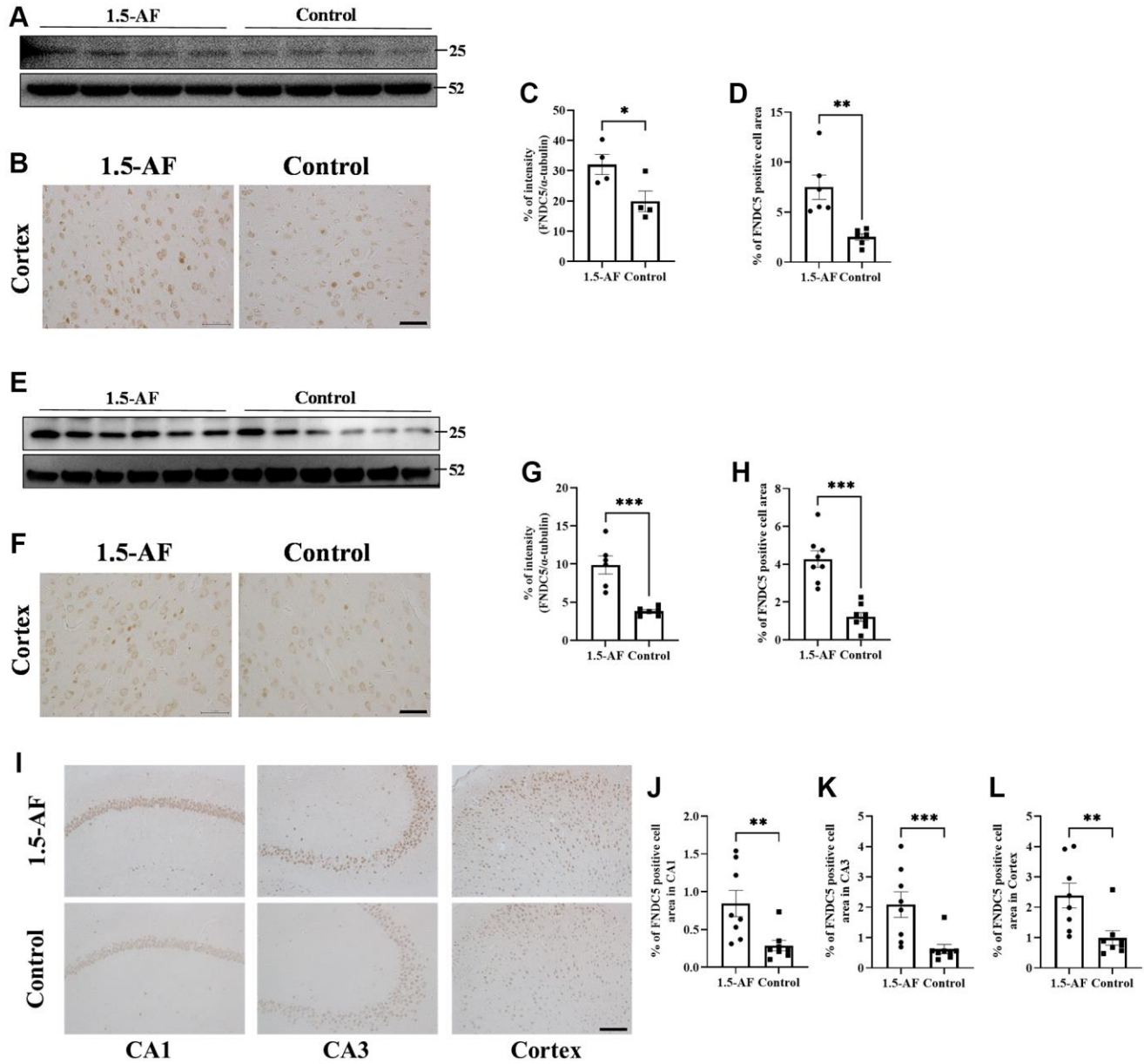
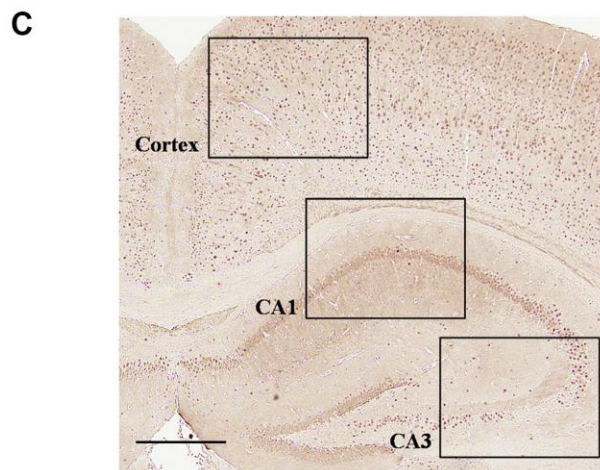
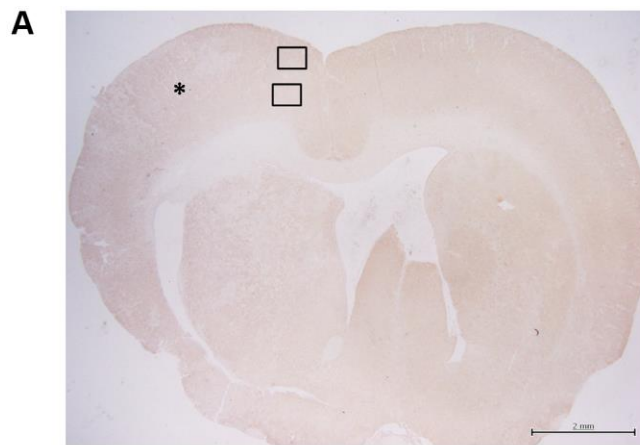


SUPPLEMENTARY FIGURES



Supplement Figure 1. FNDC5 expression in the brain of AIS, SHRSPs, and SAMP8. Representative immunoblotting of FNDC5 (A) and photomicrographs of FNDC5 immunoreactivity (B) in AIS. The protein levels of FNDC5 significantly higher in the 1.5-AF rats than in the Control group (A, C, $n = 4$) FNDC5 immunoreactivity significantly increased in the 1.5-AF group compared to that in the Control group (B, D, $n = 6$). Representative immunoblotting of FNDC5 (E) and photomicrographs of FNDC5 immunoreactivity (F) in SHRSPs. The protein levels of FNDC5 significantly higher in the 1.5-AF rats than in the Control rats (E, G, $n = 6$) FNDC5 immunoreactivity significantly increased in the 1.5-AF rats compared to that in the Control rats (F, H, $n = 8$). Representative photomicrographs of FNDC5 immunoreactivity (I) in SAMP8. FNDC5 immunoreactivity significantly increased in the 1.5-AF rats compared to that in the Control rats (J–L, $n = 8$). Data are shown as the mean \pm standard error. * $p < 0.05$, ** $p < 0.01$, *** $p < 0.001$. Scale bar = 50 μ m (B, F) and 100 μ m (I).



Supplementary Figure 2. Photographs of representative quantitative sites. Photographs of immunostaining in AIS (A), SHRSPs (B), and SAMP8 (C). The area enclosed by the square was quantified. *Penumbra area. Scale bar = 2 mm (A, B) and 500 μ m (C).