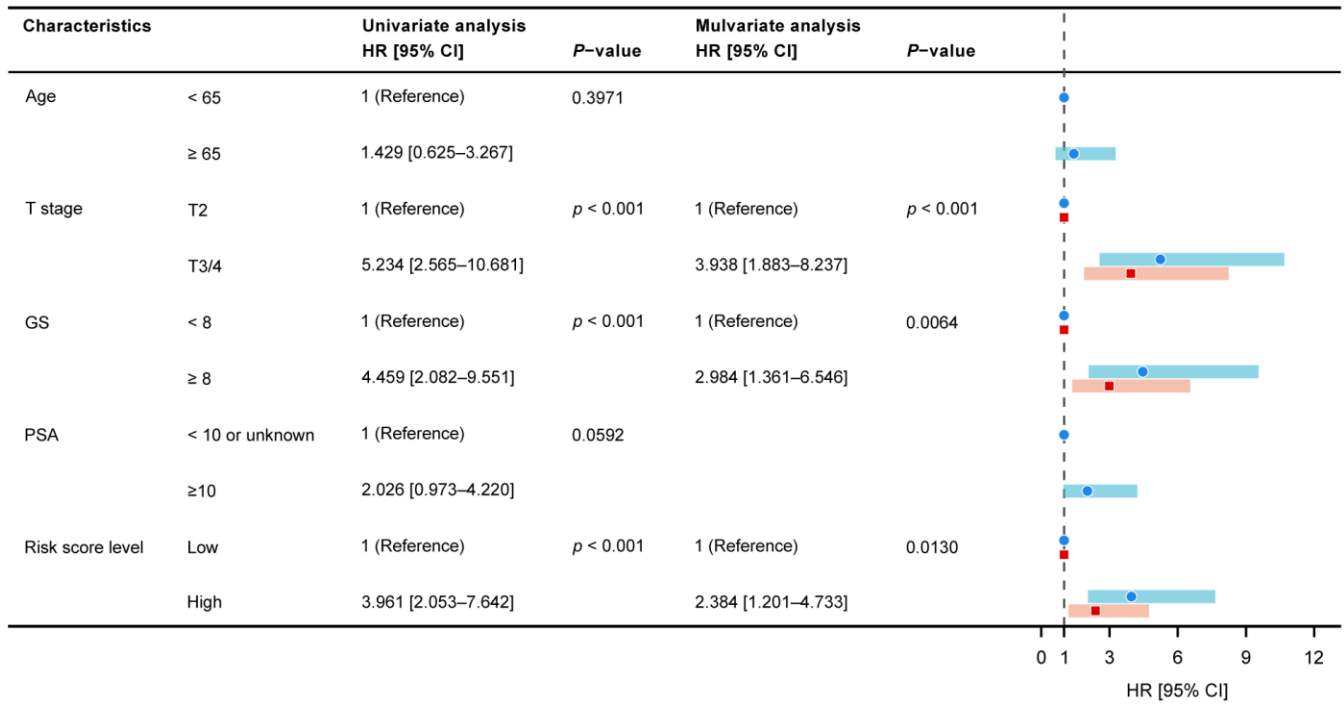
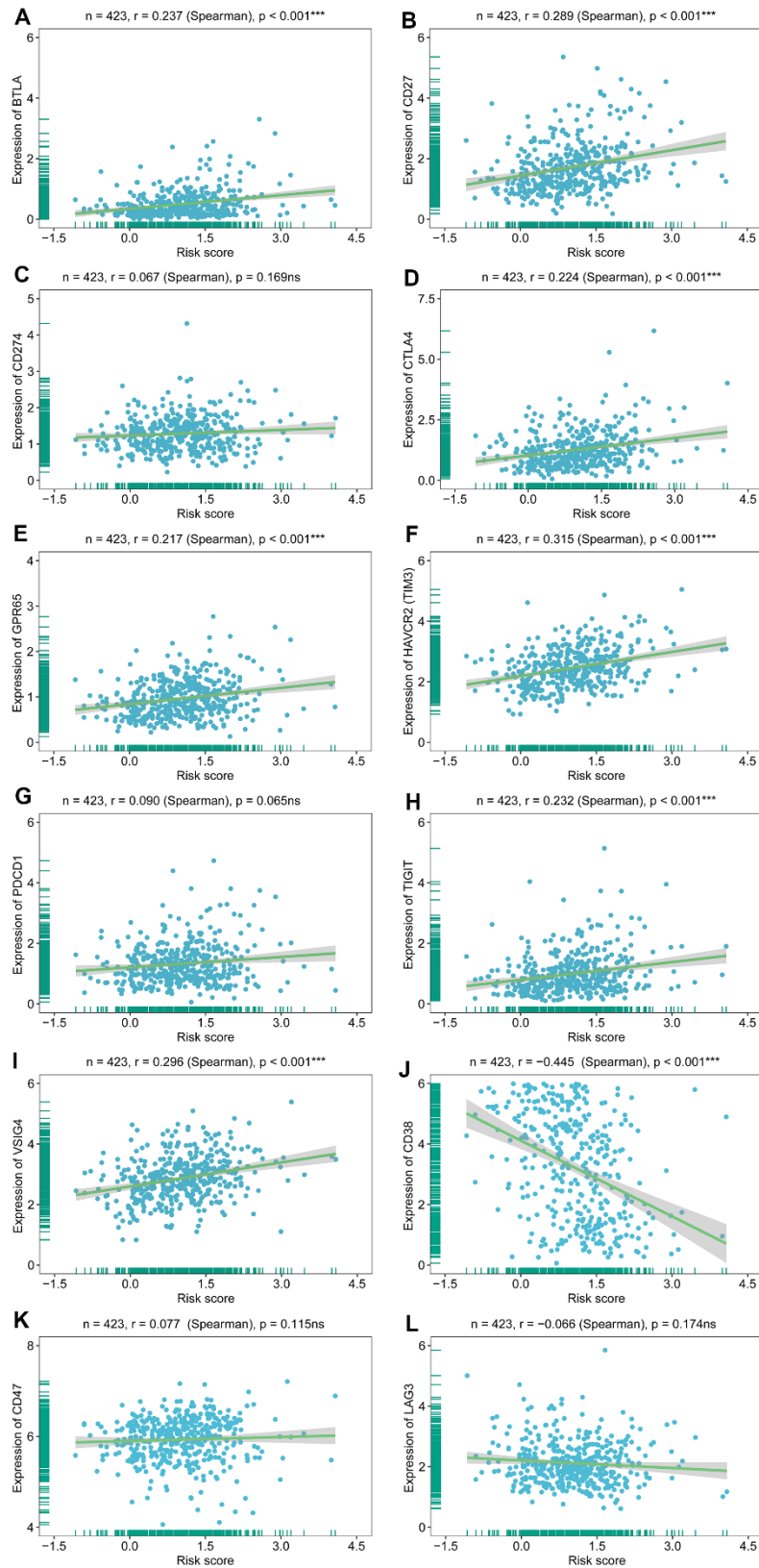


SUPPLEMENTARY FIGURES



Supplementary Figure 1. The forest maps show the results of univariate and multivariate Cox regression analyses in the MSKCC validation set.



Supplementary Figure 2. Correlation analysis between BMRS and immune checkpoints. (A–L) The scatter plot results show statistically significant expression of most immune checkpoint genes in both risk groups. There was a significant positive correlation between BMRS and these seven immune checkpoints (BTLA, CD27, CTLA4, GPR65, HAVCR2, TIGIT and VSIG4) and a significant negative correlation with CD38. ns: $p \geq 0.05$, * $p < 0.05$, ** $p < 0.01$, *** $p < 0.001$.