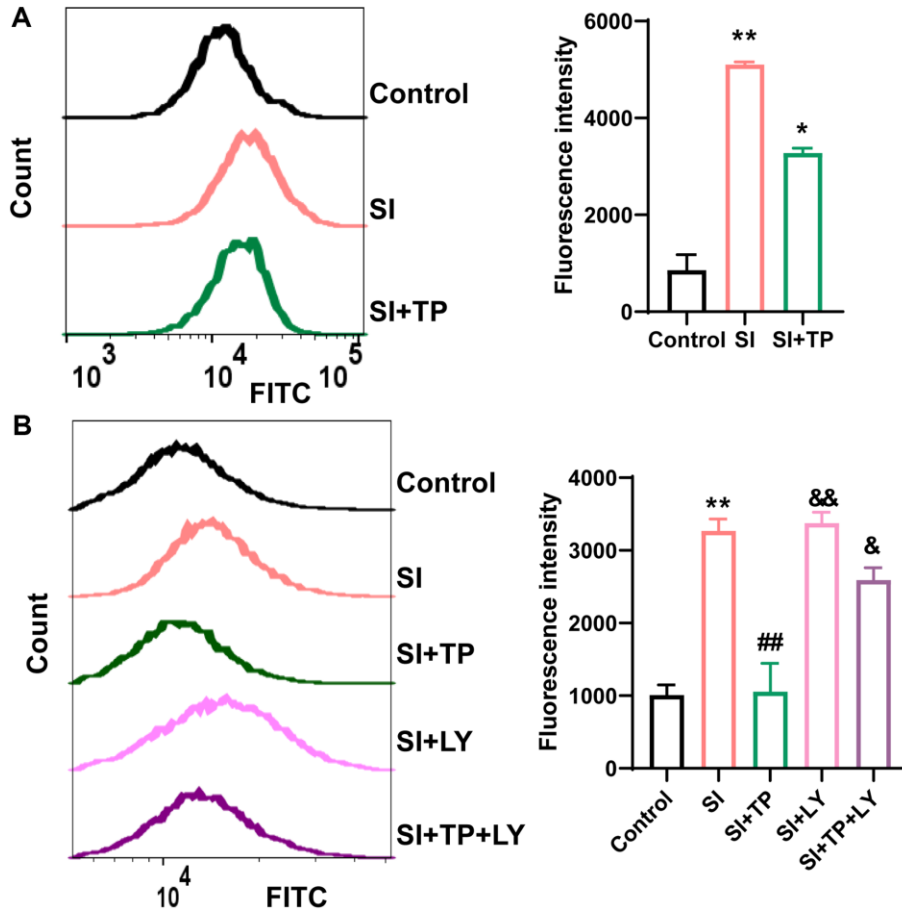


SUPPLEMENTARY FIGURE



Supplementary Figure 1. TP had a rescue effect on the increased ROS caused by SI, and LY294002 (LY) reversed this rescue effect. After pretreatment with TP (20 nM) for 6 h (A), the cells were incubated with LY294002 (10 μM) for 1 h or not (B), then exposed to SI (10 mM) for 24 h. And the cells were stained with DCFH-DA to detect the intracellular ROS production by flow cytometry. Quantitative analyses by ImageJ software ($n = 3$). Data are shown as mean ± standard deviation (SD) ($n = 3$); * $p < 0.05$, ** $P < 0.01$ compared with the control group; ## $P < 0.01$ compared with the SI group; & $P < 0.05$, && $P < 0.01$ compared with the SI+TP group.