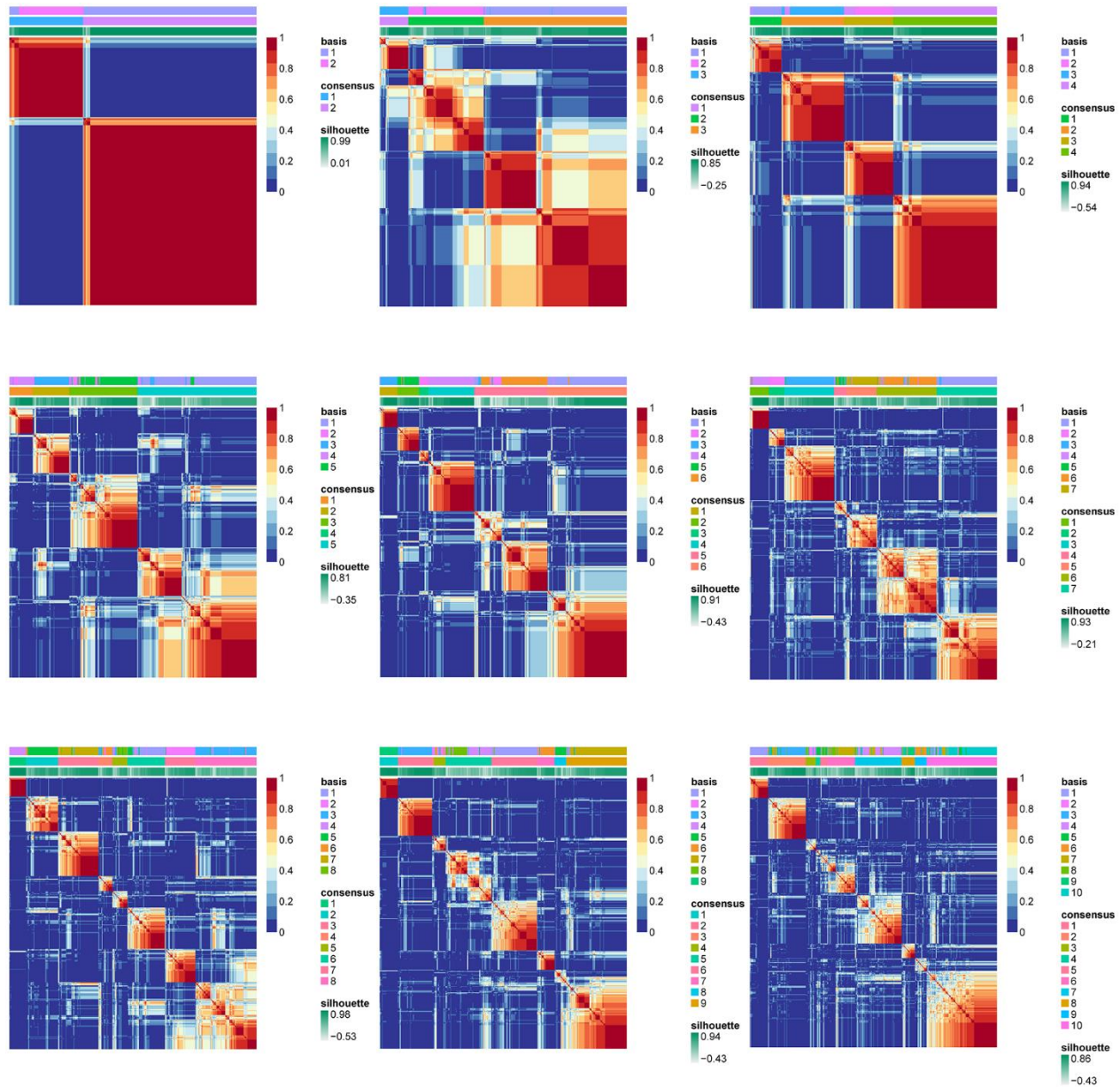
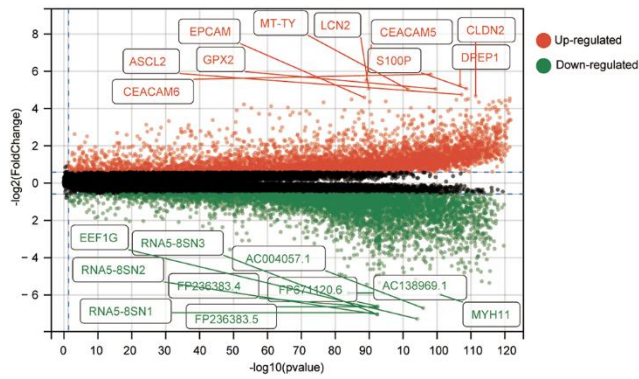
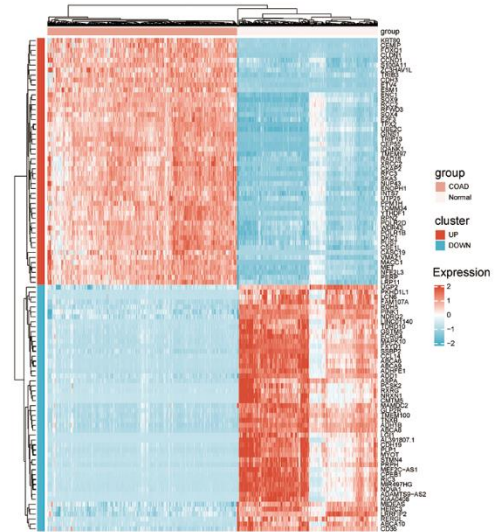


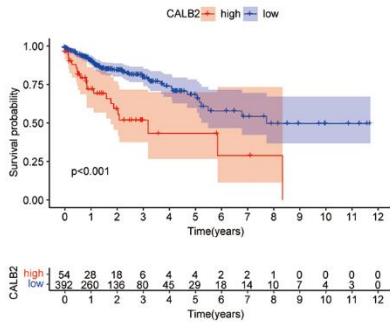
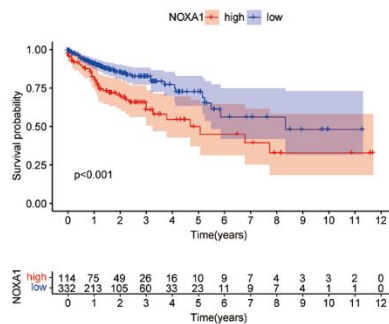
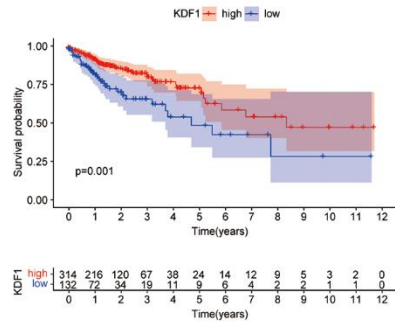
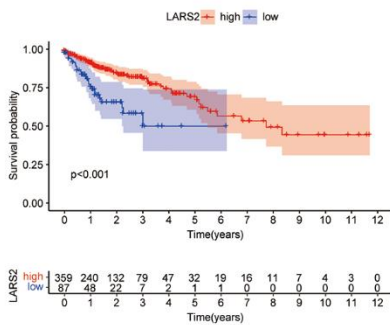
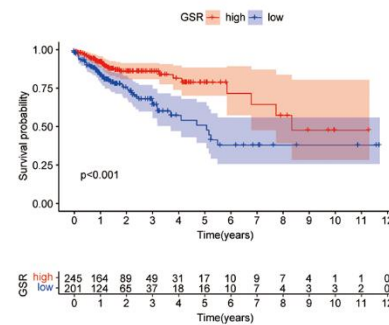
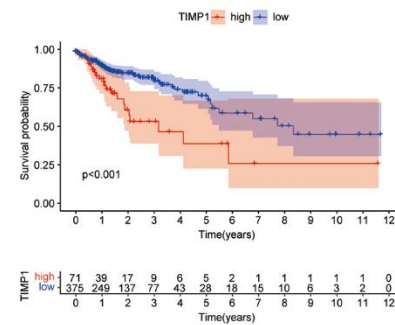
SUPPLEMENTARY FIGURES



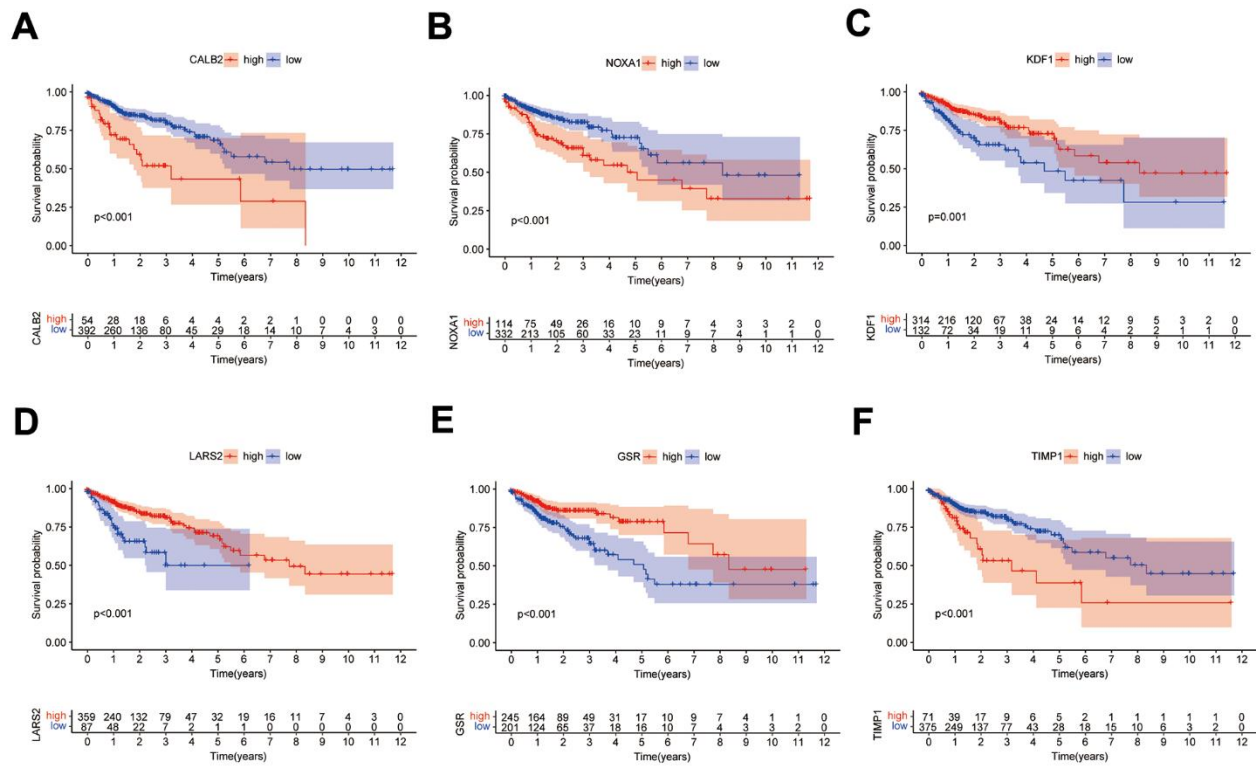
Supplementary Figure 1. Results of NFM analysis for classification numbers from 2 to 10.

A**B**

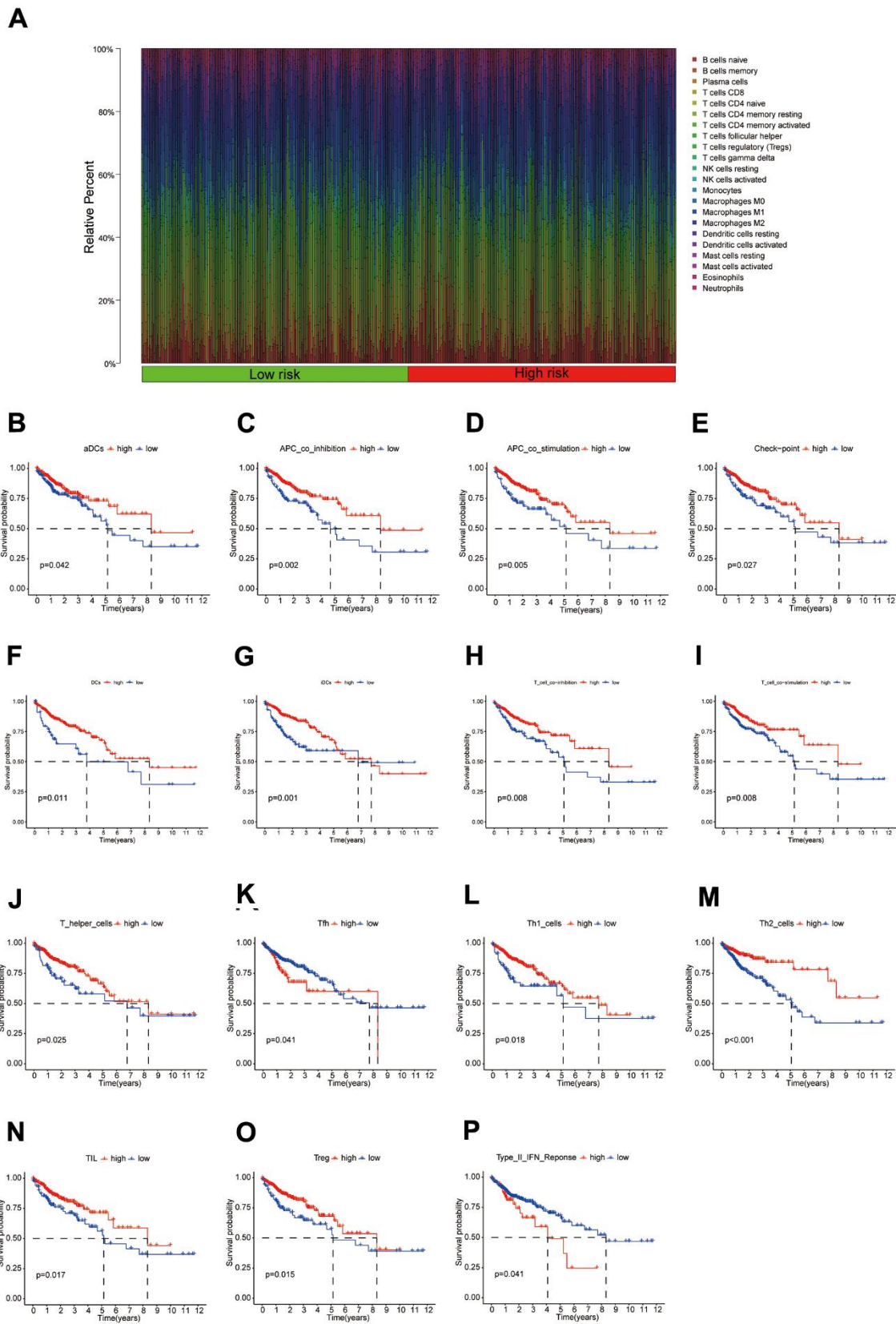
Supplementary Figure 2. DEGs in COAD patients. (A) Volcano plot; **(B)** Heat map (only the top 50 highly and lowly expressed genes are shown).

A**B****C****D****E****F**

Supplementary Figure 3. KM curves for genes used in the construction of DPM. (A–F) KM survival curves for CALB2, NOXA1, KDF1, LARS2, GSR, and TIMP1.



Supplementary Figure 4. Relationship between clinical traits and prognosis of patients with COAD. (A–E) KM survival curves for Age, T-stage, M-stage, N-stage, and stage.



Supplementary Figure 5. Relationship between immune cell function scores and the prognosis of patients with COAD. (A) The proportion of immune cell distribution between subgroups; (B–P) KM survival curves for 15 immune cell function scores significantly associated with prognosis in COAD patients ($p<0.05$).