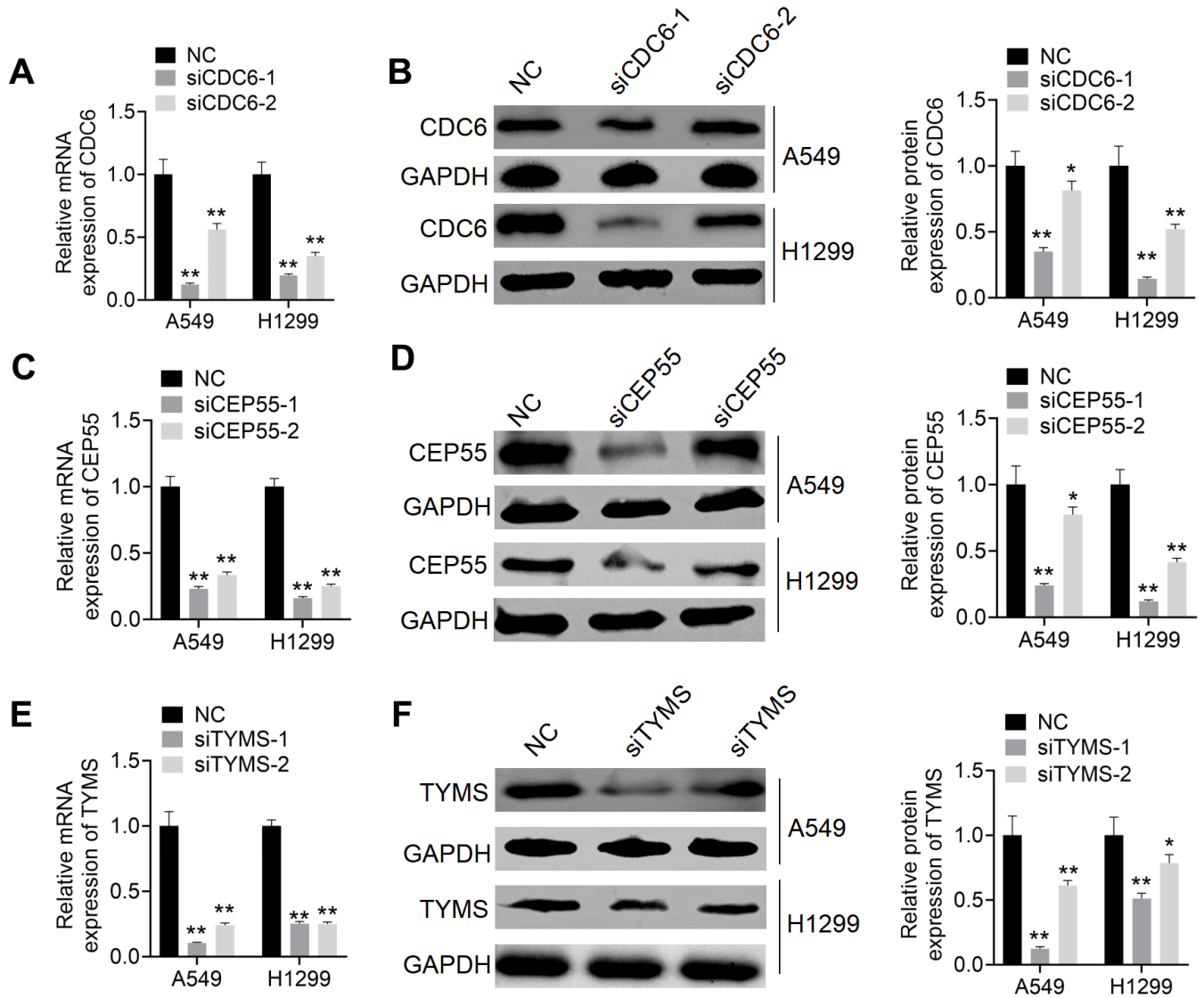
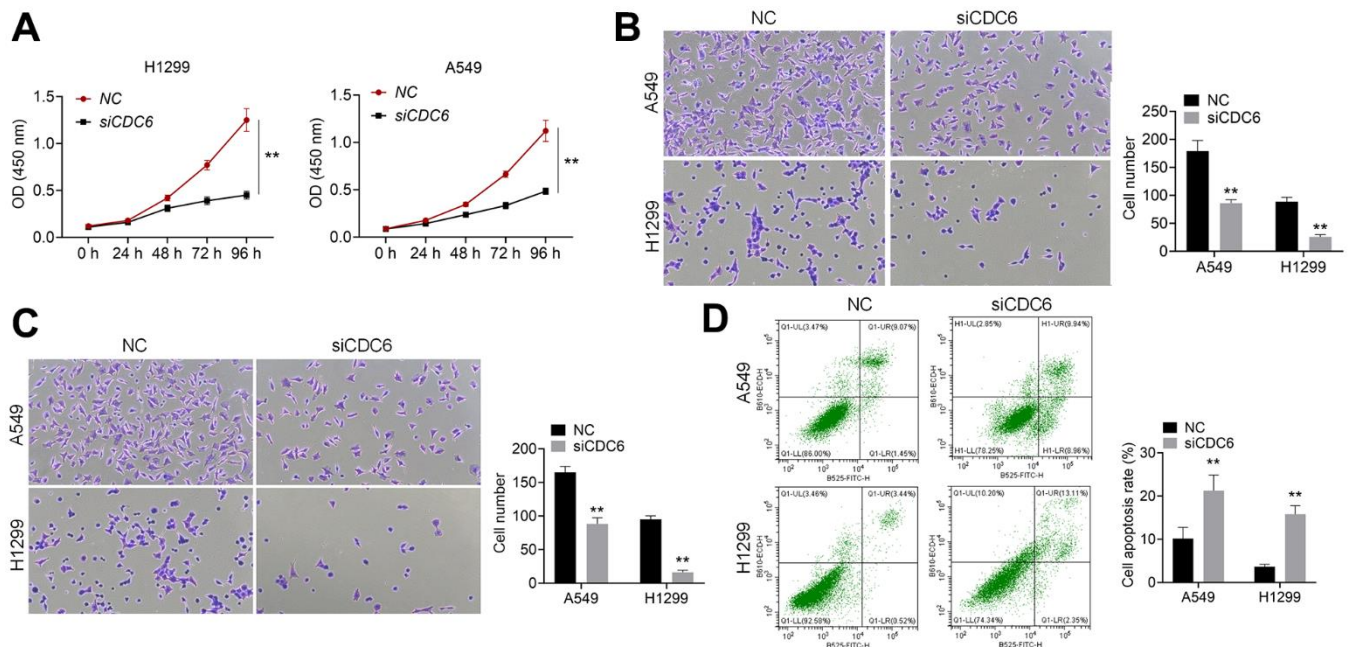


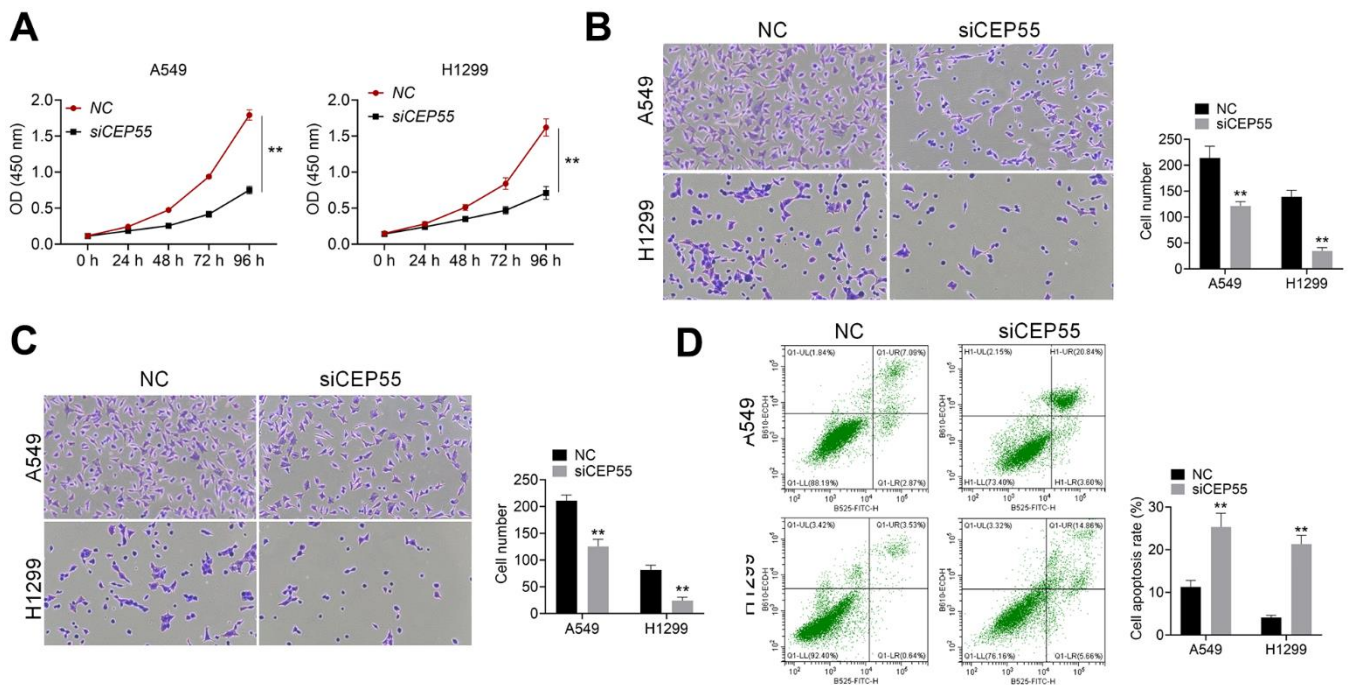
SUPPLEMENTARY FIGURES



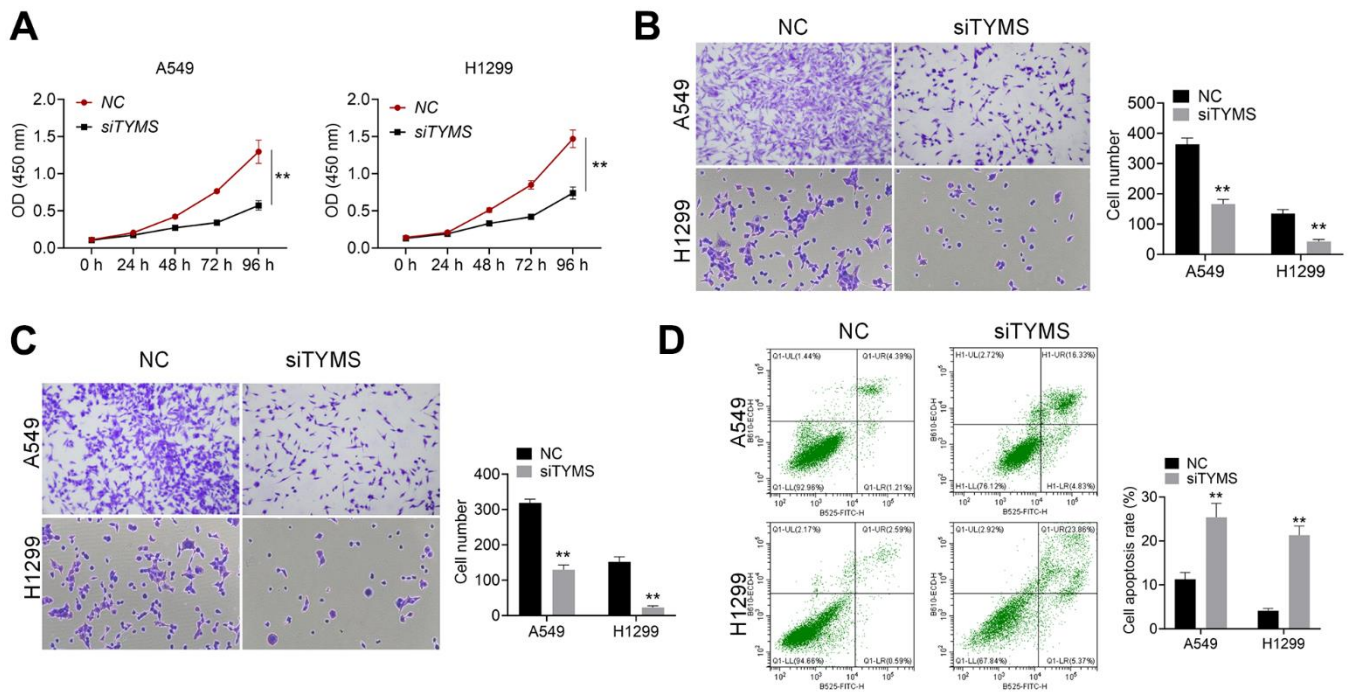
Supplementary Figure 1. Transfection efficiency was examined by PCR and western blot. (A, B) RT-PCR and western blot were performed to examine the transfection efficiency of CDC6 knockdown. **(C, D)** RT-PCR and western blot were performed to examine the transfection efficiency of CEP55 knockdown. **(E, F)** RT-PCR and western blot were performed to examine the transfection efficiency of TYMS knockdown. * $P < 0.05$, ** $P < 0.01$ vs NC group.



Supplementary Figure 2. Effect of CDC6 knockdown on malignant oncology phenotype in NSCLC cells. (A) Cell proliferation was examined by CCK8. (B, C) Cell migration and invasion were tested by Transwell assay. (D) Cell apoptosis was evaluated by FITC. * $P < 0.05$, ** $P < 0.01$ vs NC group.



Supplementary Figure 3. Effect of CEP55 knockdown on malignant oncology phenotype in NSCLC cells. (A) Cell proliferation was examined by CCK8. (B, C) Cell migration and invasion were tested by Transwell assay. (D) Cell apoptosis was evaluated by FITC. * $P < 0.05$, ** $P < 0.01$ vs NC group.



Supplementary Figure 4. Effect of TYMS knockdown on malignant oncology phenotype in NSCLC cells. (A) Cell proliferation was examined by CCK8. **(B, C)** Cell migration and invasion were tested by Transwell assay. **(D)** Cell apoptosis was evaluated by FITC. * $P < 0.05$, ** $P < 0.01$ vs NC group.