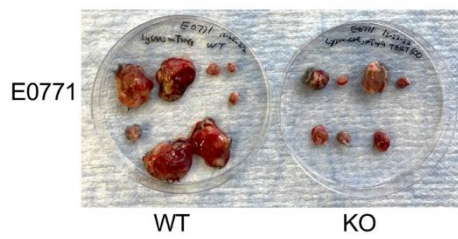
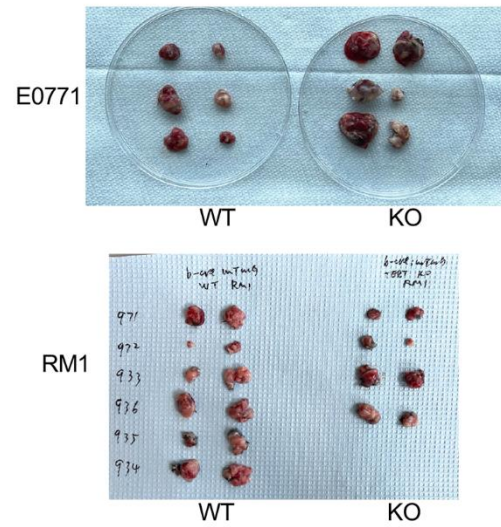


SUPPLEMENTARY FIGURES

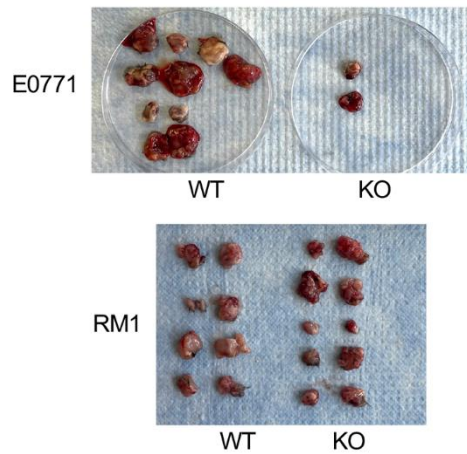
A *LysM-TERT*



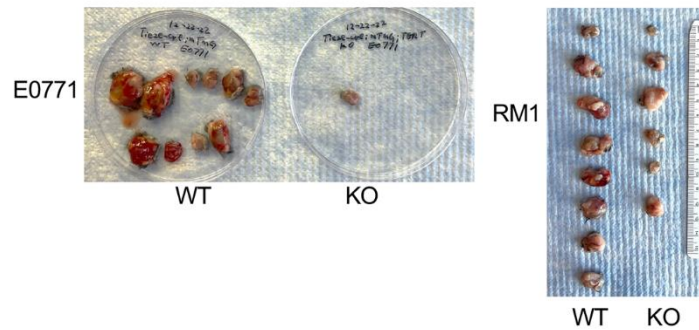
B *Pdgfrb-TERT*



C *Pdgfra-TERT*

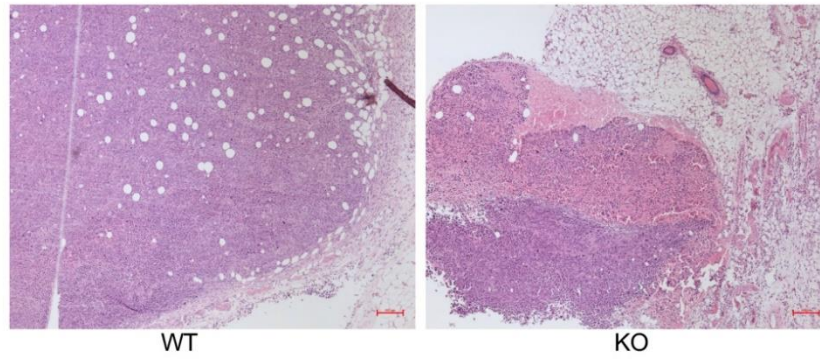


D *Tie2e-TERT*

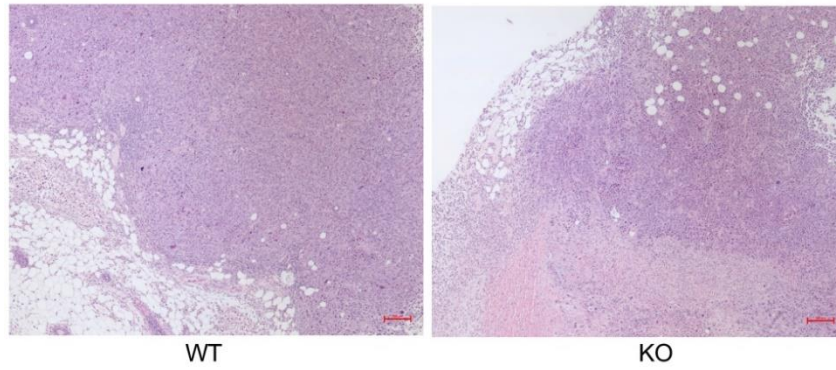


Supplementary Figure 1. Resected tumors from indicated models. (A) *LysM-Cre; TERT^{fl/fl}* (KO) and *LysM-Cre; TERT^{+/+}* (WT). **(B)** *Pdgfra-Cre; TERT^{fl/fl}* (KO) and *Pdgfra-Cre; TERT^{+/+}* (WT). **(C)** *Pdgfrb-Cre; TERT^{fl/fl}* (KO) and *Pdgfrb-Cre; TERT^{+/+}* (WT). **(D)** *Tie2e-Cre; TERT^{fl/fl}* (KO) and *Tie2e-Cre; TERT^{+/+}* (WT). All tumors are up to scale shown in D.

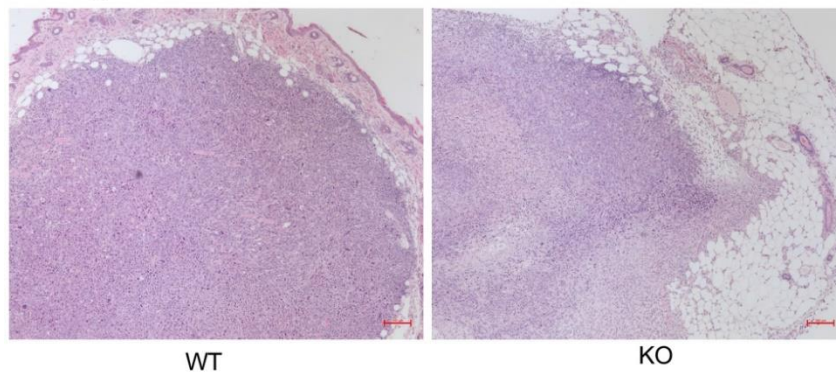
A *LysM-TERT*



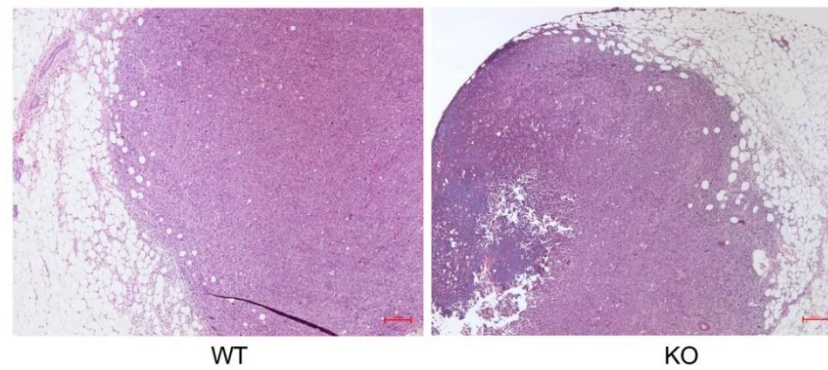
B *Pdgfrb-TERT*



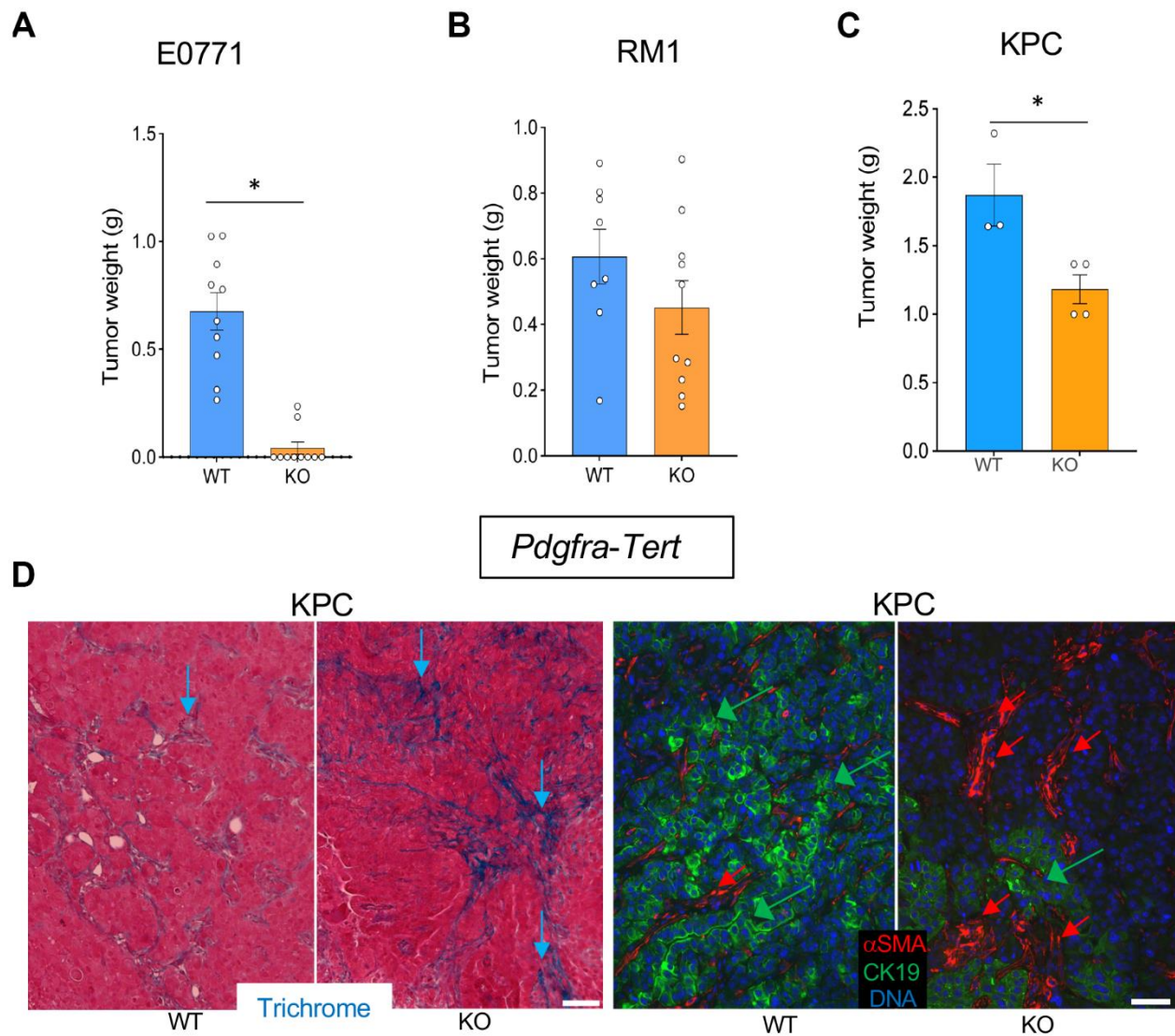
C *Pdgfra-TERT*



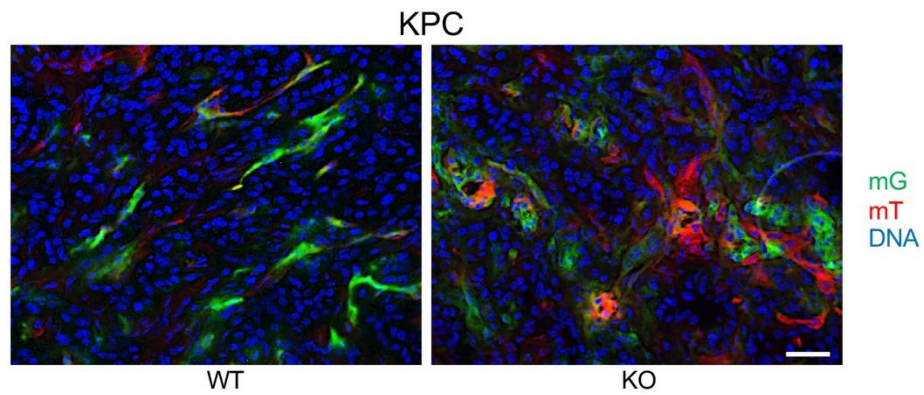
D *Tie2e-TERT*



Supplementary Figure 2. E0771 tumor sections from indicated models stained with H&E. (A) *LysM-TERT*. (B) *Pdgfrb-TERT*. (C) *Pdgfra-TERT*. (D) *Tie2e-TERT*.



Supplementary Figure 3. Tert KO in mesenchymal cells suppresses growth of pancreatic tumors. Tissues resected from *Pdgfra-Cre; TERT^{fl/fl}* (KO) and *Pdgfra-Cre; TERT^{fl/+}* (WT) littermates were analyzed once one of the groups developed critical tumor burden. **(A)** E0771 tumor weight upon resection. **(B)** RM1 tumor weight upon resection. **(C)** KPC tumor weight upon resection. **(D)** Representative paraffin sections of KPC tumors stained with Trichrome (left) or subjected to CK19 and α -SMA IF (right) revealing epithelial cells (green arrows) and myofibroblasts (red arrows). Scale bar: 100 μ m. Shown are mean \pm SEM, * P <0.05, Student's t-test.



Supplementary Figure 4. Tert KO in EC results in vasculature dysfunction. Paraffin sections of representative KPC tumors from Tie2e-Cre; mTmG; TERT^{fl/fl} (KO) and Tie2e-Cre; mTmG; TERT^{fl/+} (WT) littermates were subjected to GFP and RFP IF. Scale bar: DNA is blue. 100 μ m.