

Correction

Correction for: Combined identification of *ARID1A*, *CSMD1*, and *SENP3* as effective prognostic biomarkers for hepatocellular carcinoma

Yuanyuan Zhao^{1,2,3,4,*}, Bo Yang^{1,2,3,4,*}, Dong Chen^{1,2,3,4,*}, Xiaojun Zhou^{1,2,3,4}, Meixi Wang^{1,2,3,4}, Jipin Jiang^{1,2,3,4}, Lai Wei^{1,2,3,4}, Zhishui Chen^{1,2,3,4}

¹Institute of Organ Transplantation, Tongji Hospital, Tongji Medical College, Huazhong University of Science and Technology, Wuhan 430030, China

²Key Laboratory of Organ Transplantation, Ministry of Education, Wuhan 430030, China

³NHC Key Laboratory of Organ Transplantation, Wuhan 430030, China

⁴Key Laboratory of Organ Transplantation, Chinese Academy of Medical Sciences, Wuhan 430030, China

*Equal contribution

Correspondence to: Zhishui Chen, Lai Wei; **email:** zschen@tjh.tjmu.edu.cn, weilai@tjh.tjmu.edu.cn

Keywords: differentially expressed genes, characteristic molecular heterogeneity, population specific biomarkers, hepatocellular carcinoma, HBV infection

Original article: *Aging (Albany NY)* 2021; 13:4696–4712

PMID: [33558447](https://pubmed.ncbi.nlm.nih.gov/33558447/)

PMCID: [PMC7906131](https://pubmed.ncbi.nlm.nih.gov/PMC7906131/)

doi: [10.18632/aging.202586](https://doi.org/10.18632/aging.202586)

This article has been corrected: The authors identified an error in the assembly of Figure 7A. Specifically, the image of transwell invasion assay intended to represent the siRNC (negative control) group in the *SENP3* gene panel was erroneously replaced with the image from the siRNA group. This was an oversight during the figure preparation process.

The Figure 7A *SENP3* siRNC panel has been replaced by the authors using data from the original experiments. This correction does not change the conclusions of the publication.

The corrected version of **Figure 7** is provided below.

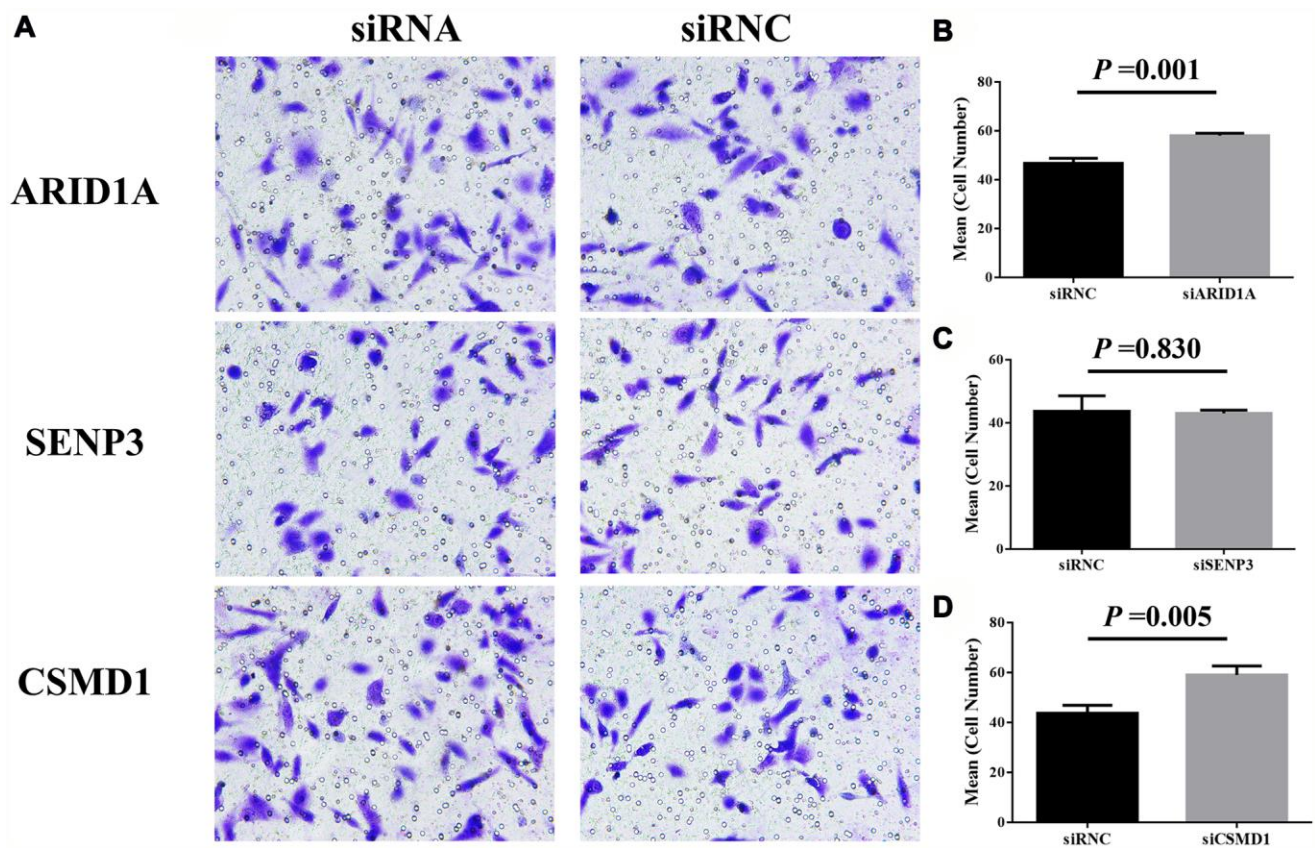


Figure 7. Cell invasion after the suppression of genes, *ARID1A*, *CSMD1*, and *SENP3* by siRNA. The images of transwell invasion assay shown in (A) were scanned, quantified, and plotted in (B–D, respectively).