

grading and staging the histological lesions. Am. J. Gastroenterol. 1999;94:2467–2474.

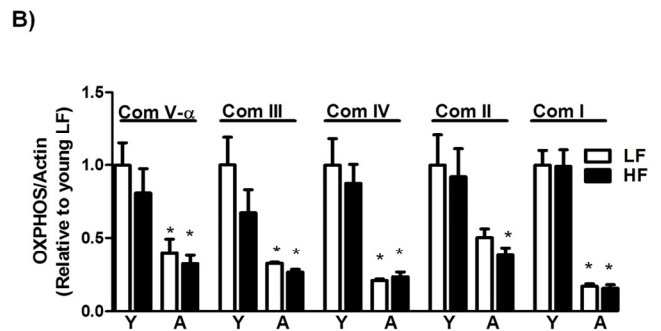
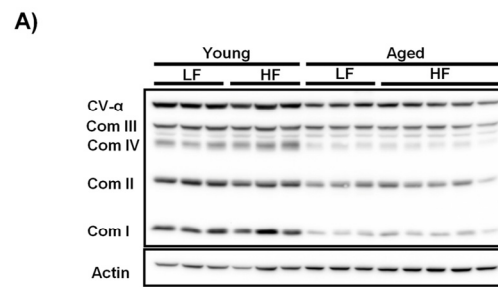
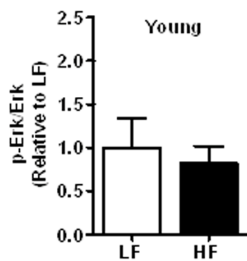
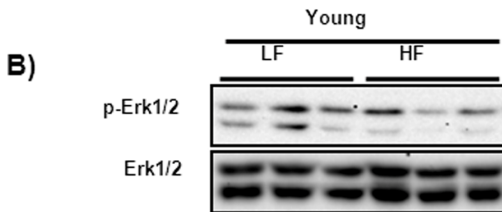
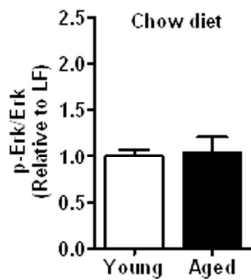
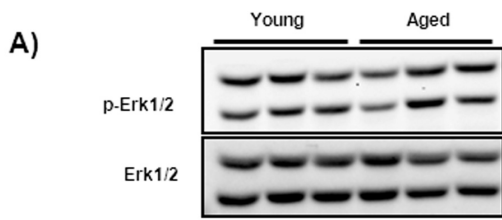
45. Matthews DR, Hosker JP, Rudenski AS, Naylor BA, Treacher DF, Turner RC. Homeostasis model assessment: insulin resistance and beta-cell function from fasting plasma glucose and insulin concentrations in man. Diabetologia. 1985;28:412–419.

46. Jacobs RL, Devlin C, Tabas I, Vance DE. Targeted deletion of hepatic CTP:phosphocholine cytidyltransferase alpha in mice decreases plasma high density and very low density lipoproteins. J. Biol. Chem. 2004;279:47402–47410.

SUPPLEMENTARY DATA

Supplementary Table 1. Primer sequences used for qRT-PCR

Gene	Forward primer 5'-3'	Reverse primer 5'-3'
<i>Ikk2</i>	GGAGTACTGCCAAGGAGGAGAT	ACAGGCTGCCAGTTAGGGAGGAAG
<i>IkBα</i>	TGGAAGTCATTGGTCAGGTGAA	CAGAAGTGCCTCAGCAATTCCT
<i>Cd68</i>	TGACCTGCTCTCTCTAAGGCTACA	TCACGGTTGCAAGAGAAACATG
<i>Cxcl1</i>	CCAAACCGAAGTCATAGCCAC	GTCTTCTTTCTCCGTTACTTGG
<i>Il10</i>	GCTCTTACTGACTGGCATGAG	CGCAGCTCTAGGAGCATGTG
<i>Il-1β</i>	TGCAGCTGGAGAGTGTGG	TGCTTGTGAGGTGCTGATG
<i>Il-6</i>	GTTCTCTGGGAAATCGTGGA	TTTCTGCAAGTGCATCATCG
<i>Mcp1</i>	GCTGGAGAGCTACAAGAGGATCA	ACAGACCTCTCTCTTGAGCTTGGT
<i>Cd36</i>	GATCGGAACTGTGGGCTCAT	GGTTCCTTCTTCAAGGACAACTTC
<i>Tnf</i>	GTAGCCACGTCGTAGCAAAC	AGTTGGTTGTCTTTGAGATCCATG
<i>Ppia</i>	TTCCTCCTTTACAGAATTATTCCA	CCGCCAGTGCCATTATGG



Supplementary Figure 2. Reduced expression of oxidative phosphorylation protein complexes (OXPHOS) in middle-aged mice. (A) Representative immunoblots from liver extracts of young (Y) and middle-aged (A) mice fed a LFD and a HFD using anti-OXPPOS and actin antibody (B) Immunoblots were quantified by densitometry and normalized against actin as a control for loading. Values are expressed as mean \pm SEM; n = 6-7 mice/group. * $p \leq 0.05$. (Nonparametric Mann-Whitney *U* test).

Supplementary Figure 1. Hepatic inflammation did not alter in the aged mice fed a chow diet and young mice fed with HFD for 12 weeks. (A) Phosphorylation status of Erk1/2 was detected in liver extracts from young and middle-aged mice using immunoblot analysis. (B) Immunoblot analysis using anti-phospho-Erk1/2 and anti-Erk1/2 antibody was performed in liver extracts from young mice fed a HFD for 12 weeks. Values are expressed as mean \pm SEM; n = 6-8 mice/group. * $p \leq 0.05$ (Nonparametric Mann-Whitney *U* test).