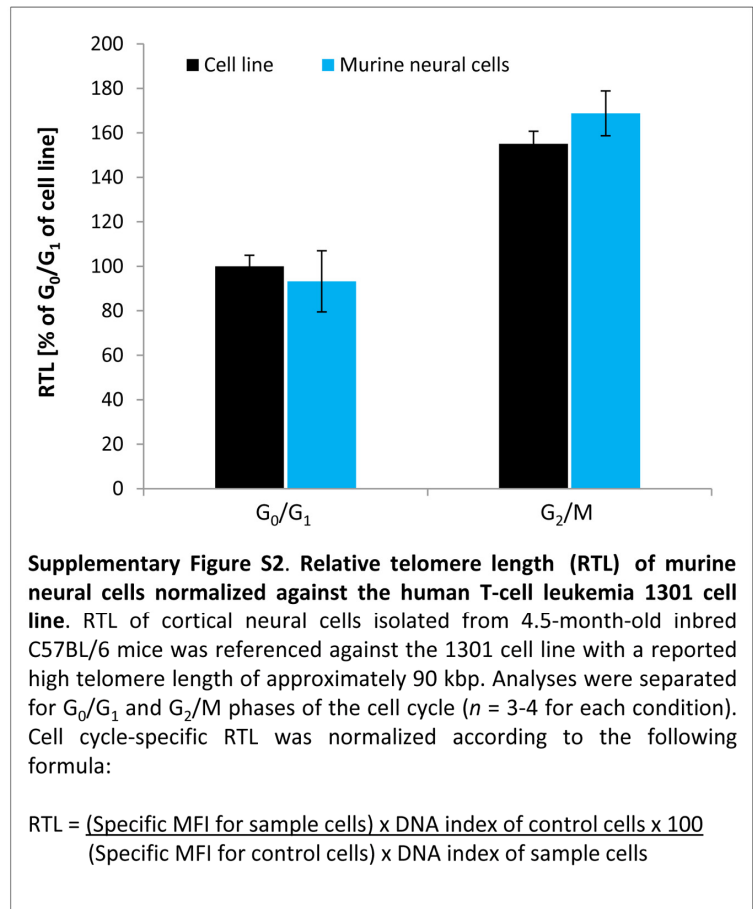
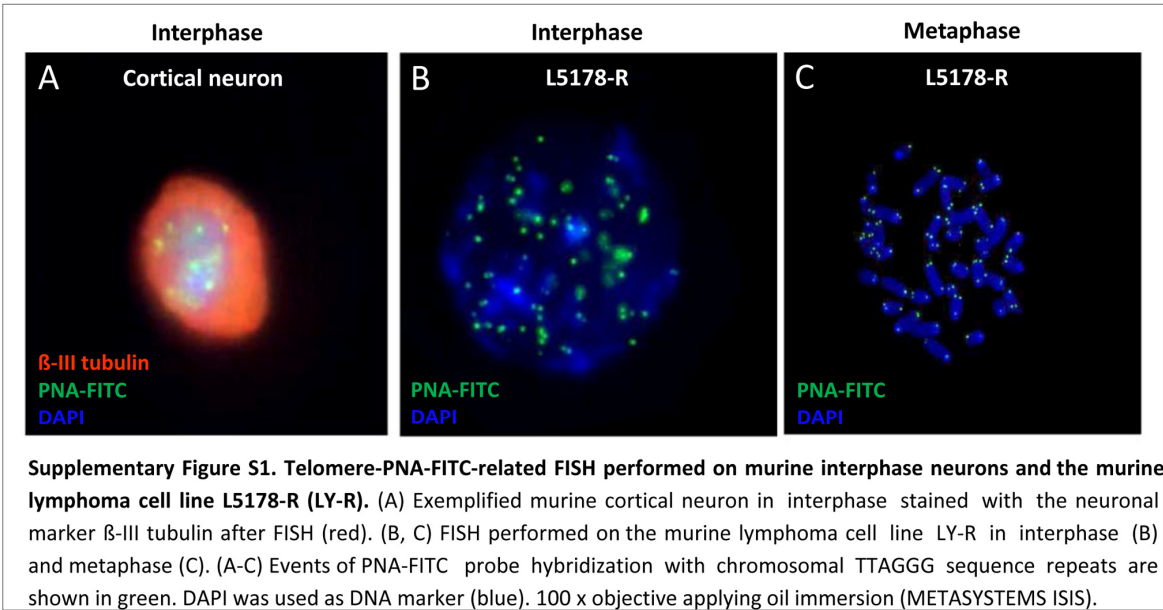
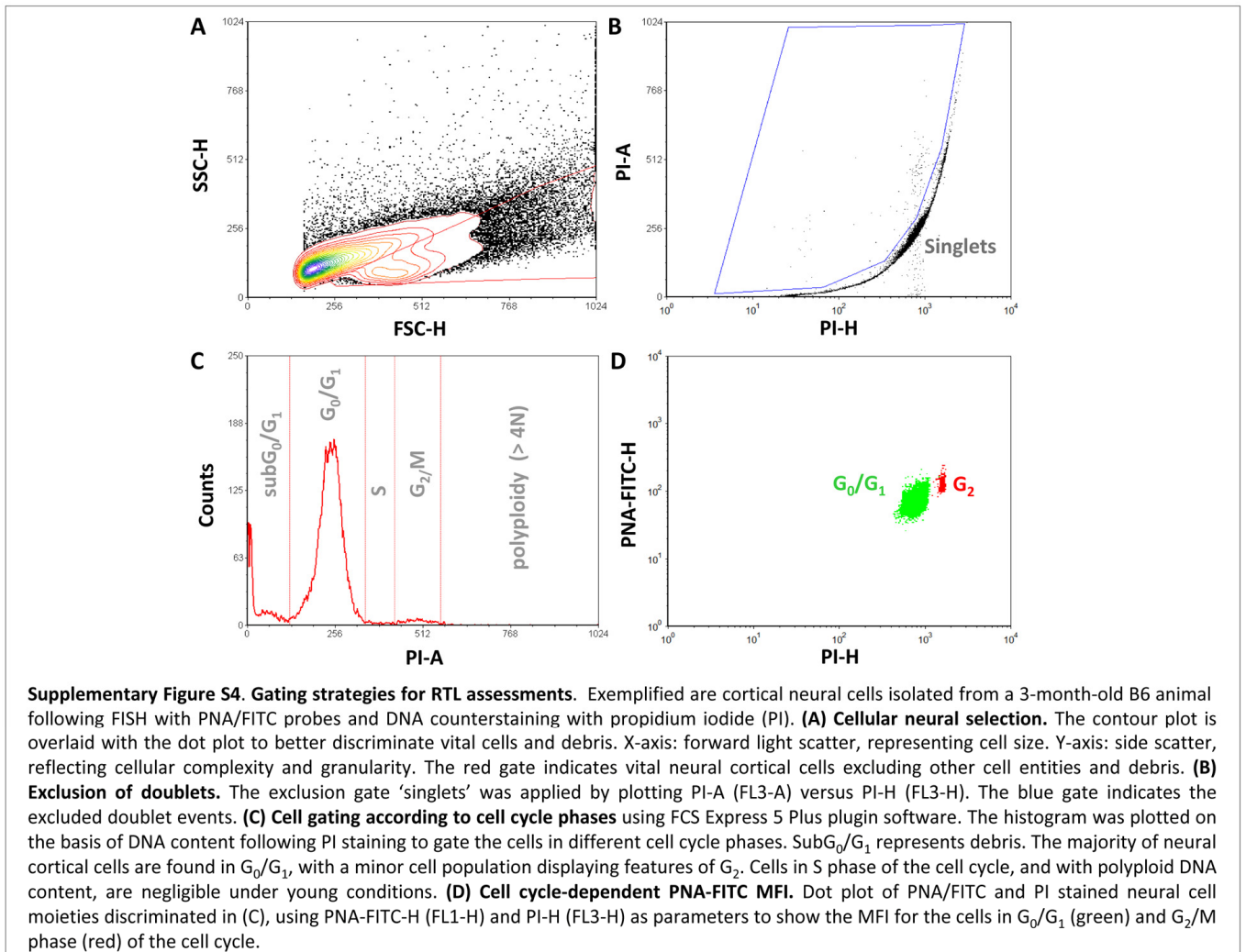
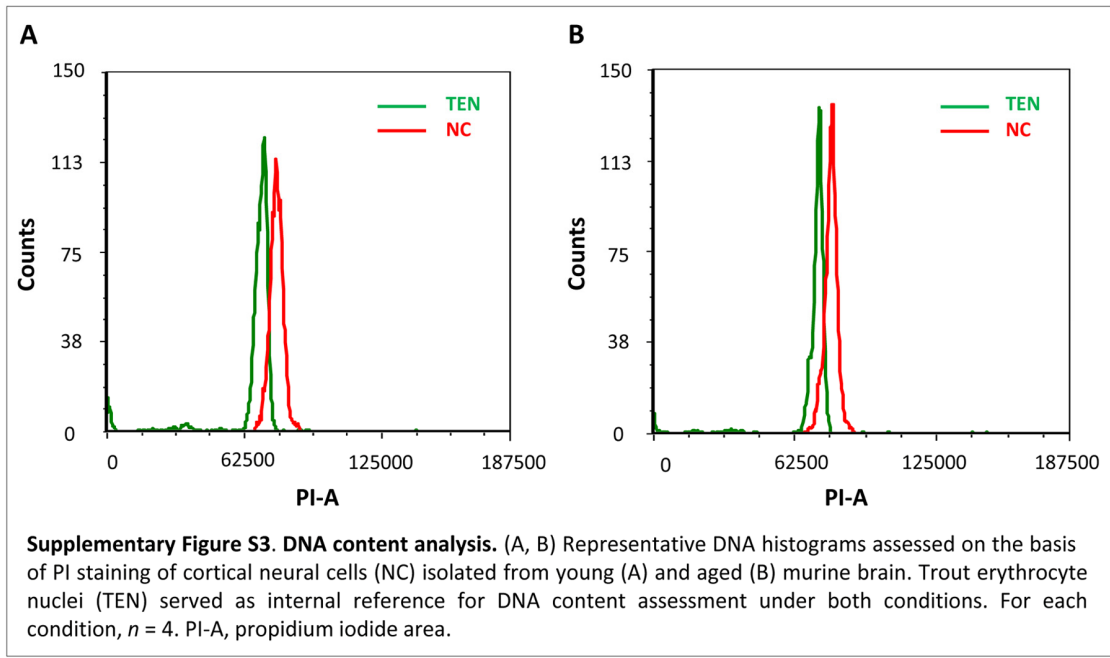
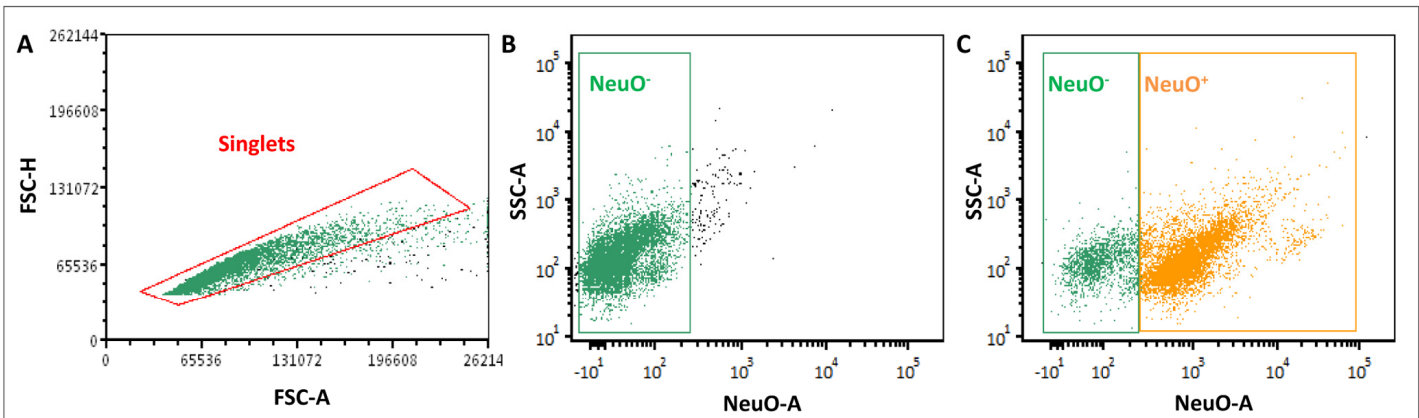


SUPPLEMENTARY FIGURES







Supplementary Figure S5. C criteria for NeuO-based selection of neurons via FACS. Exemplified are dot plots of cortical neural cells isolated from young murine brain, illustrating the selection of singlets on the basis of FSC-A and FSC-H parameters (A), and the selection of NeuO-negative fractions (NeuO⁻; B) and NeuO-positive cell moieties (NeuO⁺; C) on the basis of NeuO-A and SSC-A. The NeuO-positive fraction indicates the neuronal population. For each condition, $n = 4$. SSC-A, side scatter area; NeuO-A, NeuO area; FSC-H, forward scatter height; FSC-A, forward scatter area.