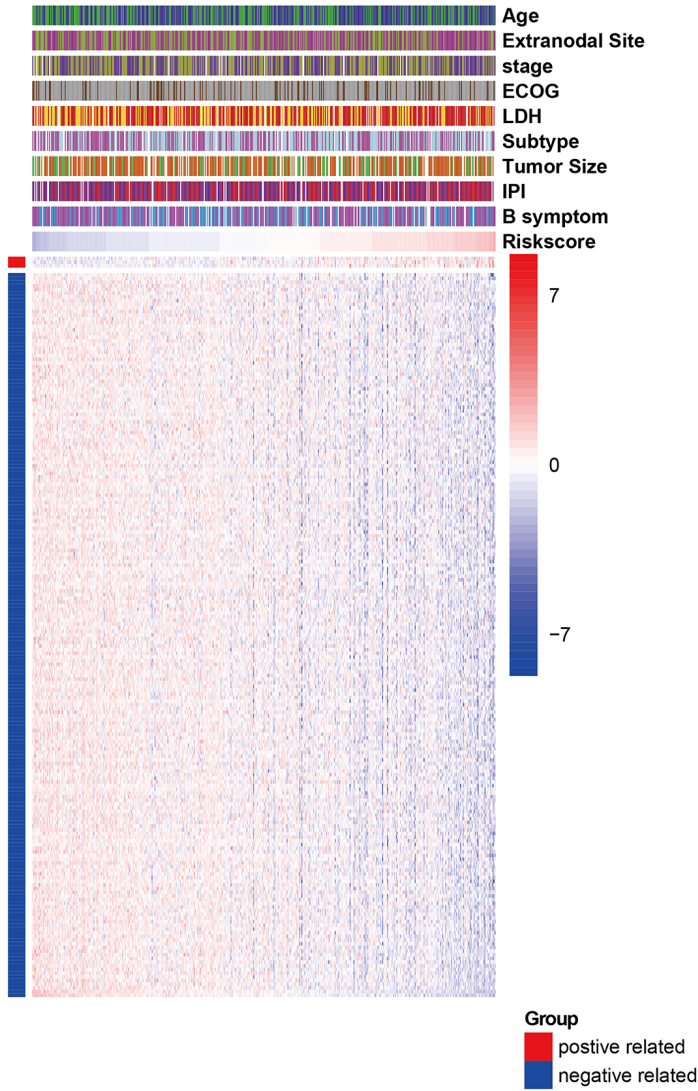


SUPPLEMENTARY FIGURES

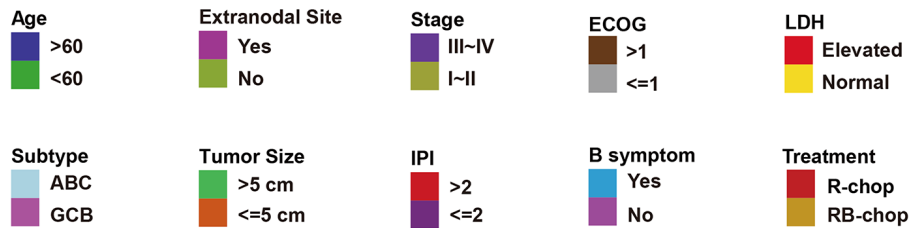
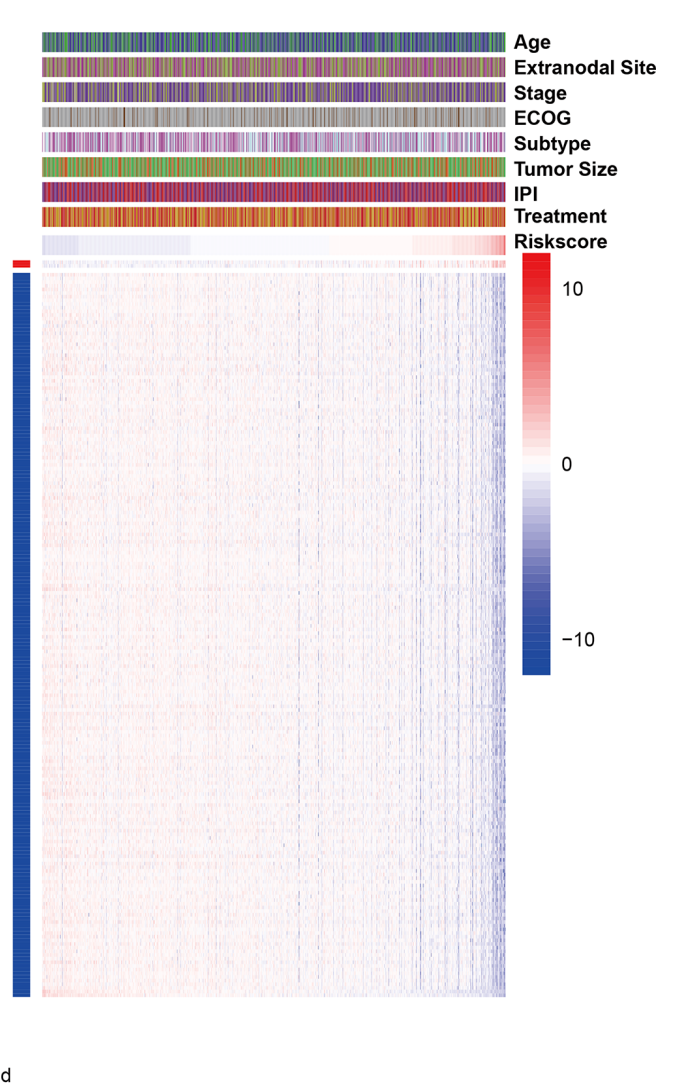
A

Riskscore related genes in GSE31312



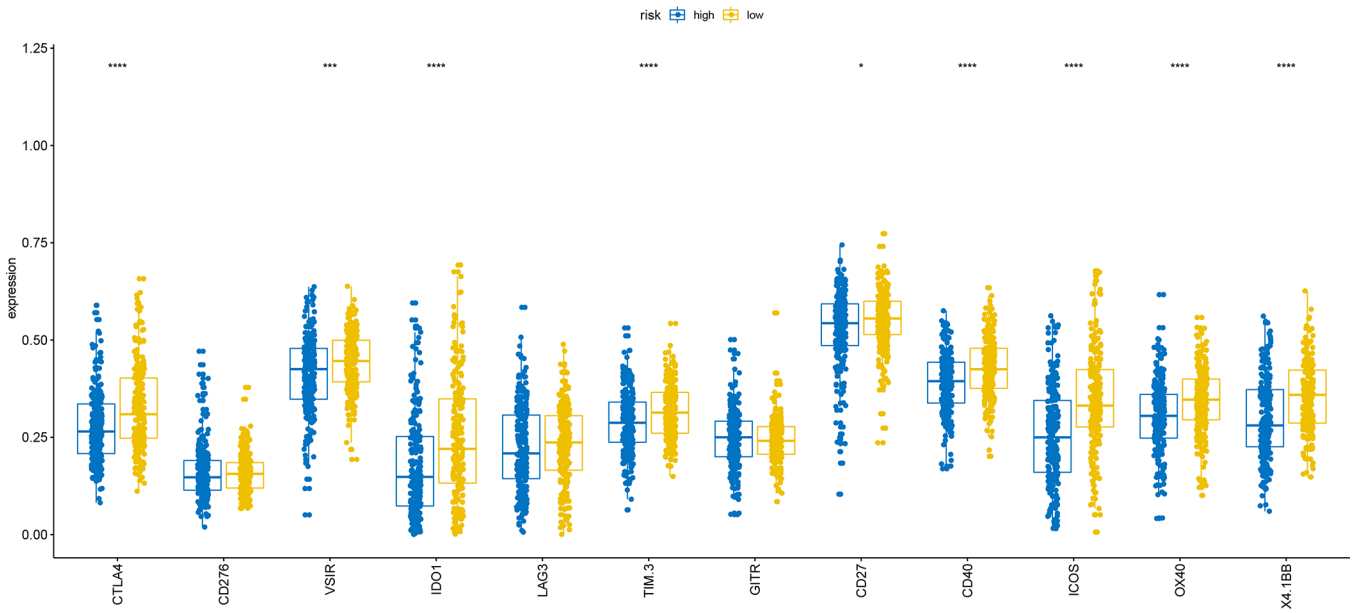
B

Riskscore related genes in GS117556



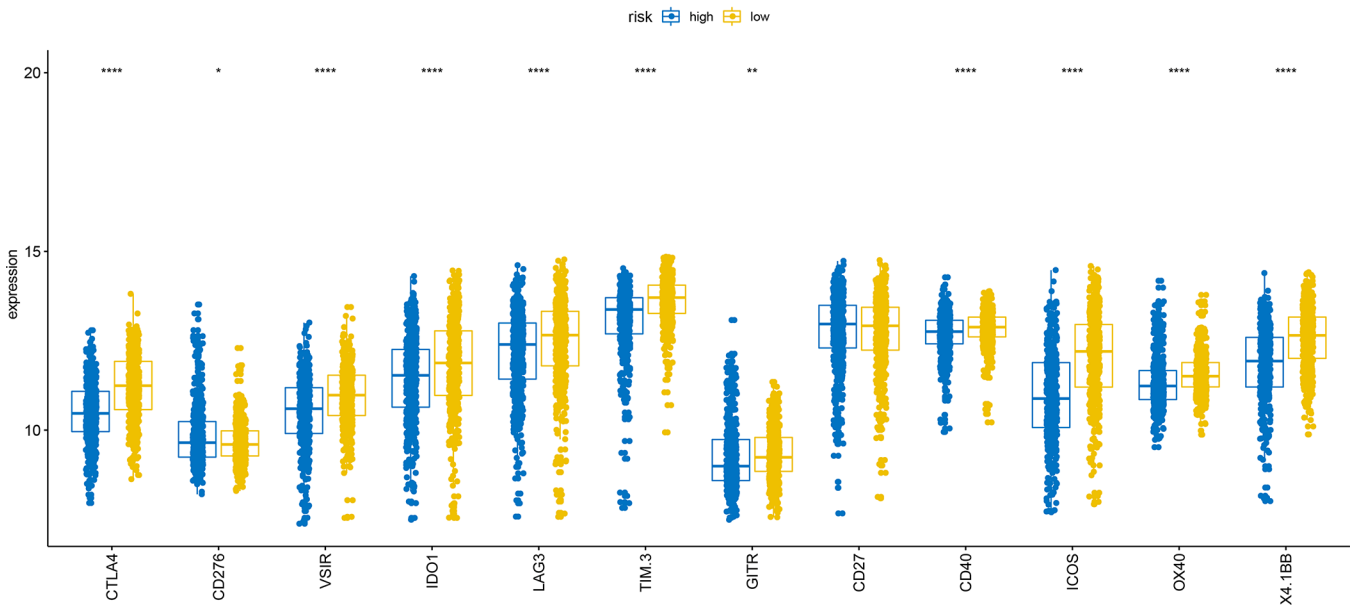
Supplementary Figure 1. Risk score-related genes and clinical characteristics in GSE31312 (A) and GSE117556 (B) patients. ECOG: Eastern Cooperative Oncology Group score, IPI: International Prognostic Index, ABC: activated B-cell-like, GCB: germinal center B-cell-like, R-CHOP: cyclophosphamide, doxorubicin, vincristine, and prednisone plus rituximab, BR-CHOP: cyclophosphamide, doxorubicin, vincristine, and prednisone plus rituximab and bortezomib.

Immune checkpoints expression distribution in GSE31312

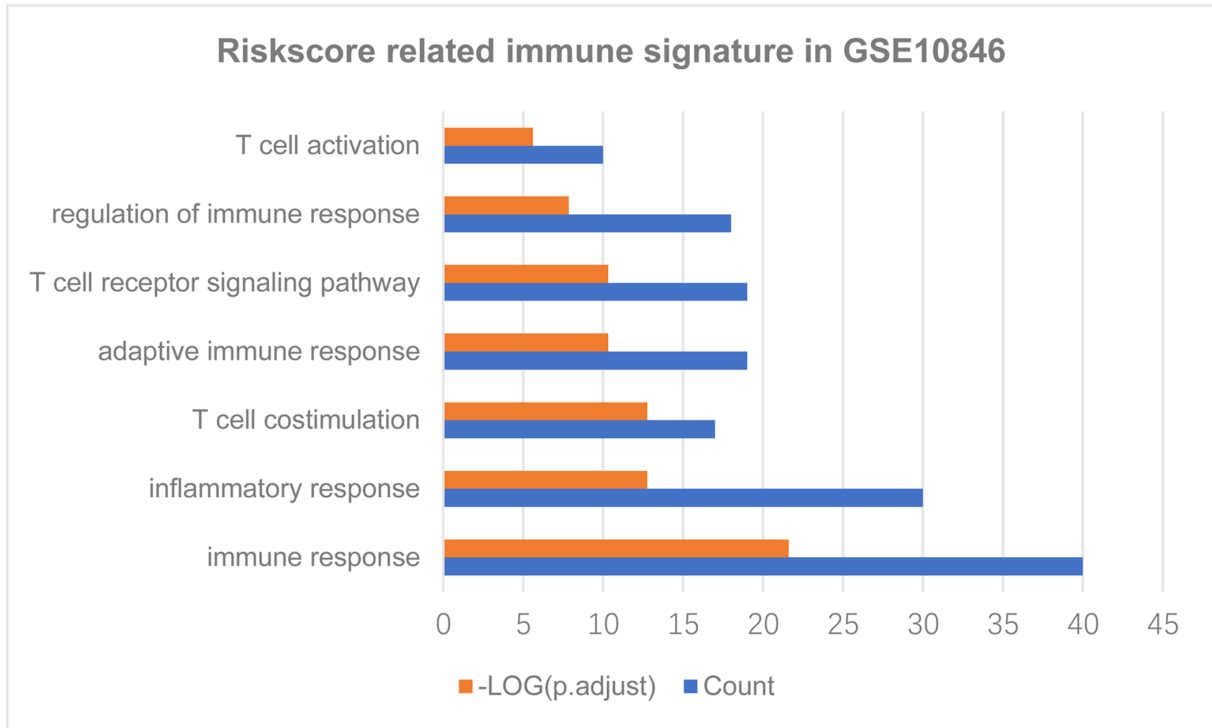
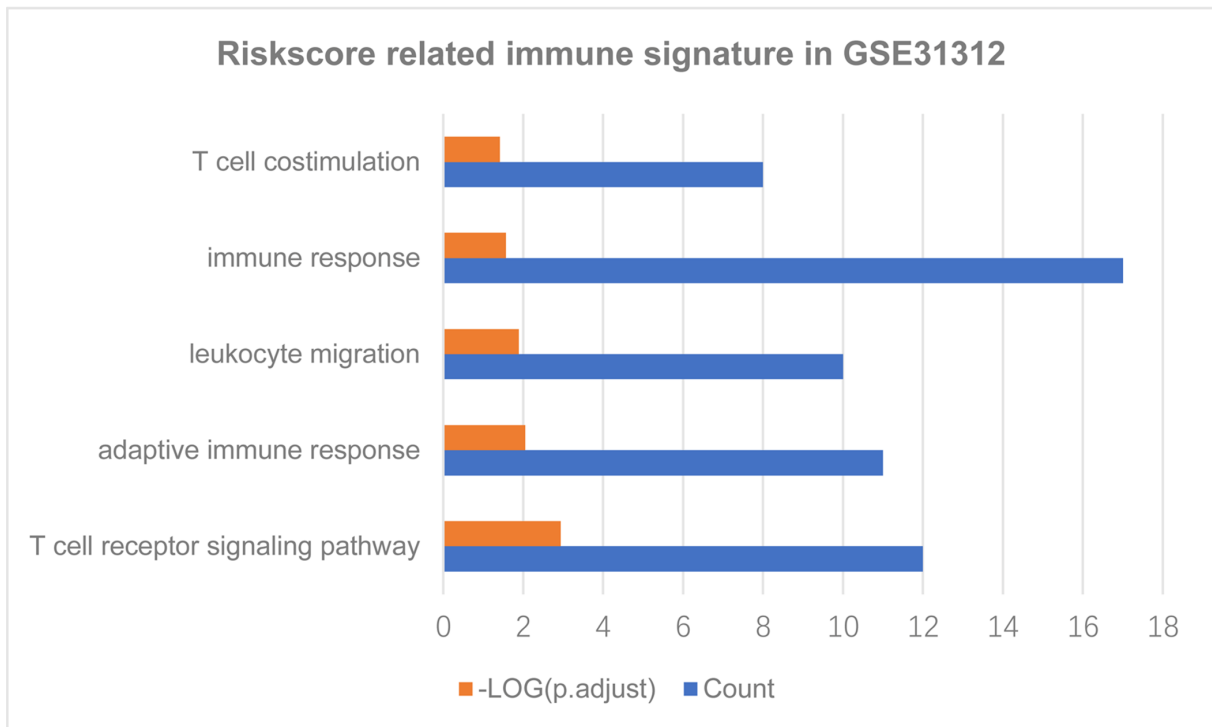


Supplementary Figure 2. Distribution of immune checkpoint gene expression in GSE31312 patients.

Immune checkpoints expression distribution in GSE117556



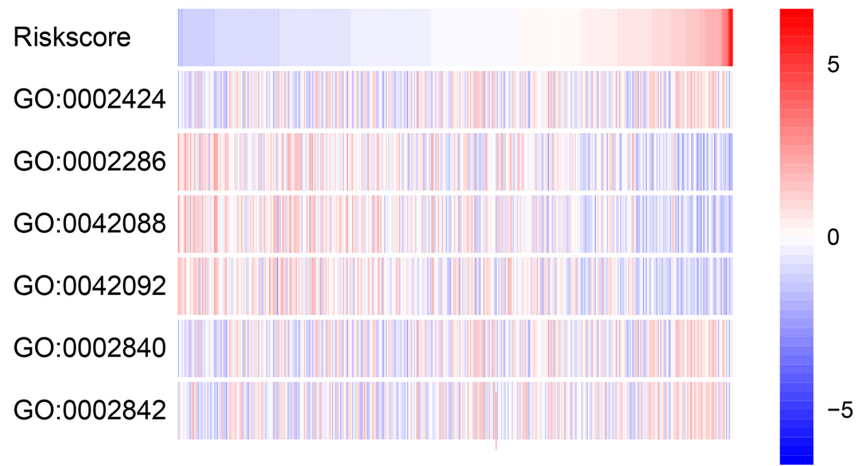
Supplementary Figure 3. Distribution of immune checkpoint gene expression in GSE117556 patients.

A**B**

Supplementary Figure 4. Risk score-related immune expression patterns in GSE10846 (A) and GSE31312 (B) patients.

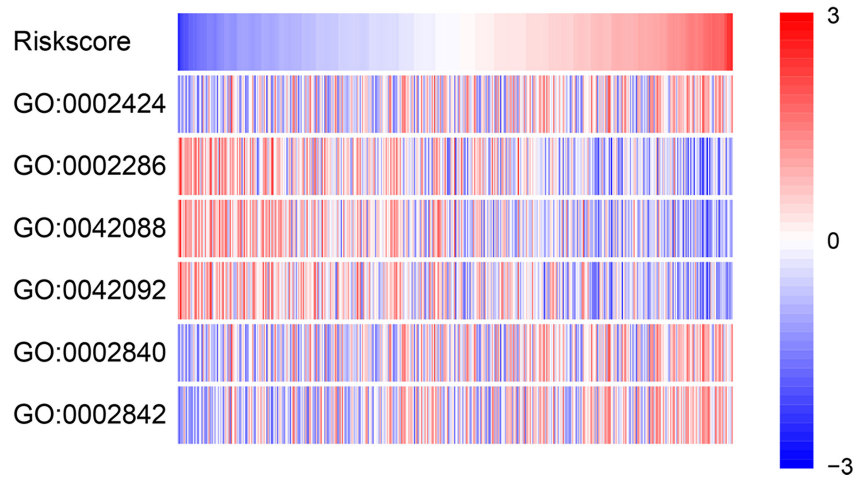
A

Riskscore related T cell specific immunity in GSE10846



B

Riskscore related T cell specific immunity in GSE31312



Supplementary Figure 5. Risk score-related T cell-specific immunity in GSE10846 (A) and GSE31312 (B) patients.