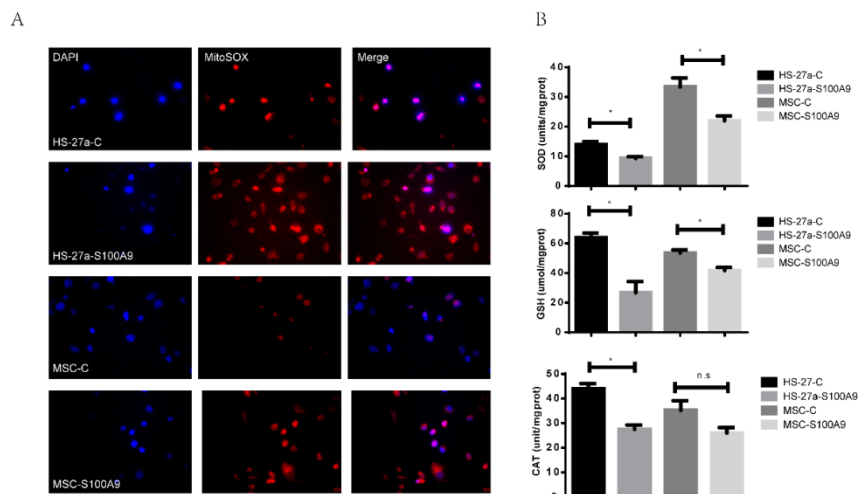


## SUPPLEMENTARY FIGURE



**Supplementary Figure 1. Increased mitochondrial ROS and reduced anti-oxidant enzymes levels in S100A9-induced HS-27a and primary MSC cells.** cells were treated with rhS100A9 for 72h, mitochondrial ROS (A) was measured with fluorescence microscope (DAPI, blue; MitoSOX, red); and superoxide dismutase (SOD), glutathione (GSH), and catalase (CAT) levels (B) were tested.