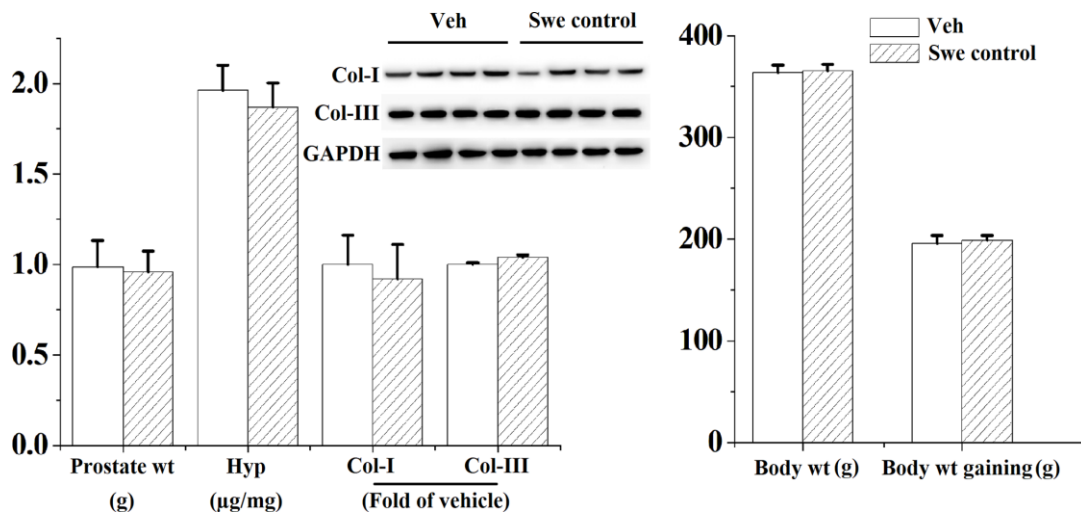
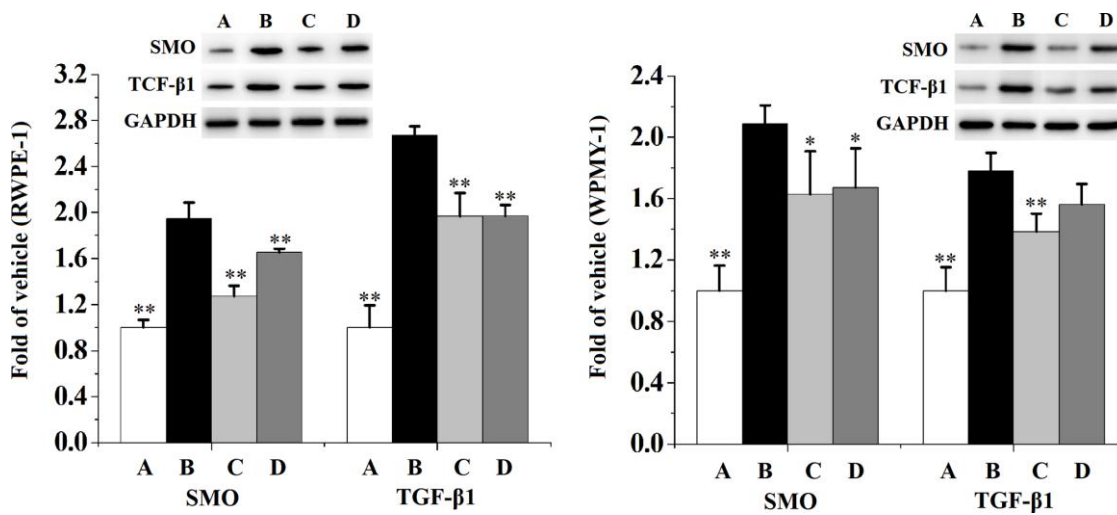


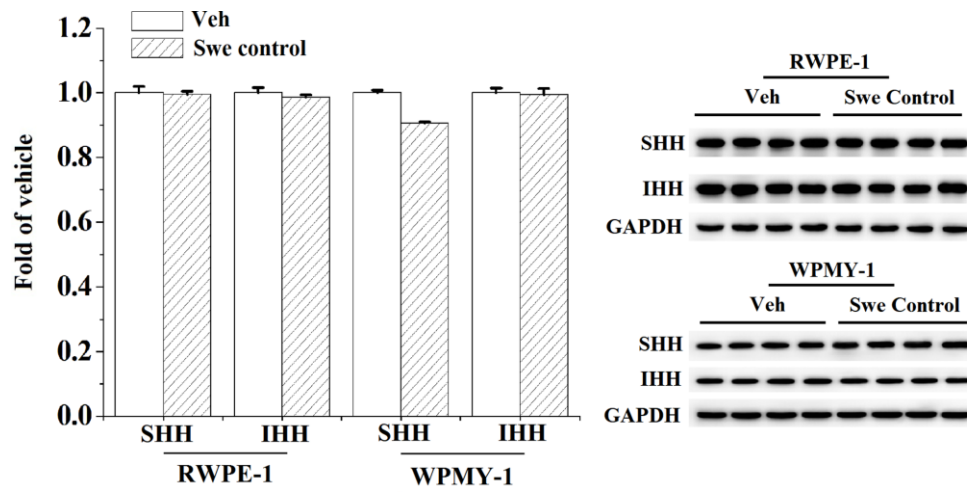
SUPPLEMENTARY FIGURES



Supplementary Figure 1. Effects of sweriamarin on (n=6 per group) body weight (wt), body wt gaining, prostate wt and Hyp content, as well as on (n=4 per group) prostatic expression of Col-I and Col-III. Veh: vehicle, Swe Control: 32 mg/kg/d sweriamarin but without CS treatment.



Supplementary Figure 2. Effects of sweriamarin on (n=4 per group) the expression of SHH and IHH in RWPE-1 and WPMY-1 cells. Veh: vehicle, Swe control: 30 µmol/L sweriamarin but without CS treatment.



Supplementary Figure 3. GDC-0449 inhibited the (n=3 per group) expression of SMO and TGF- β 1 in RWPE-1 and WPMY-1 cells. ** $p < 0.01$ compared to the CS model group. * $p < 0.05$ compared to the CS model group. A: vehicle, B: 5% CS, C: 5% CS-10 $\mu\text{mol/L}$ GDC-0449, D: 5% CS-5 $\mu\text{mol/L}$ GDC-0449.