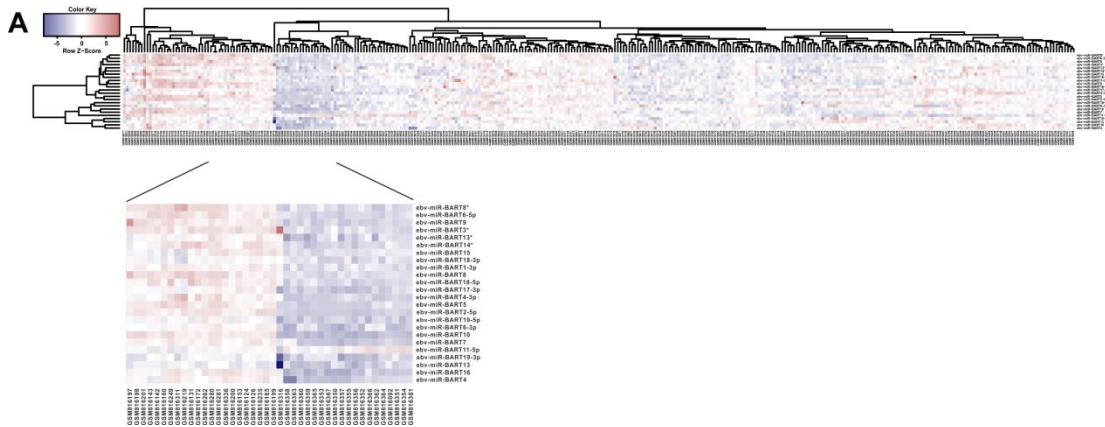
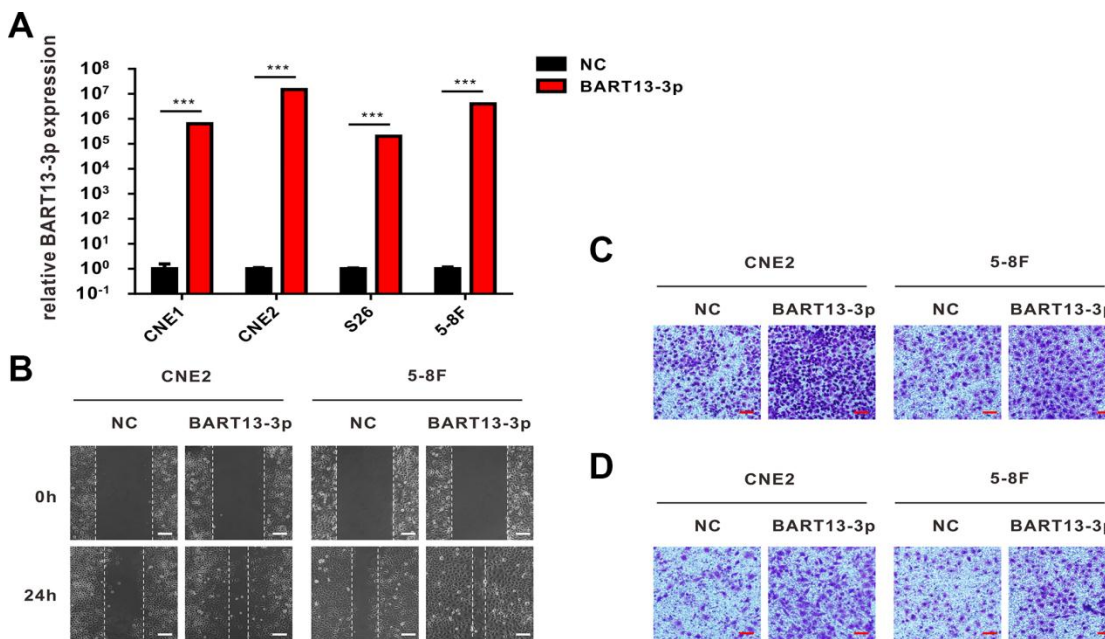


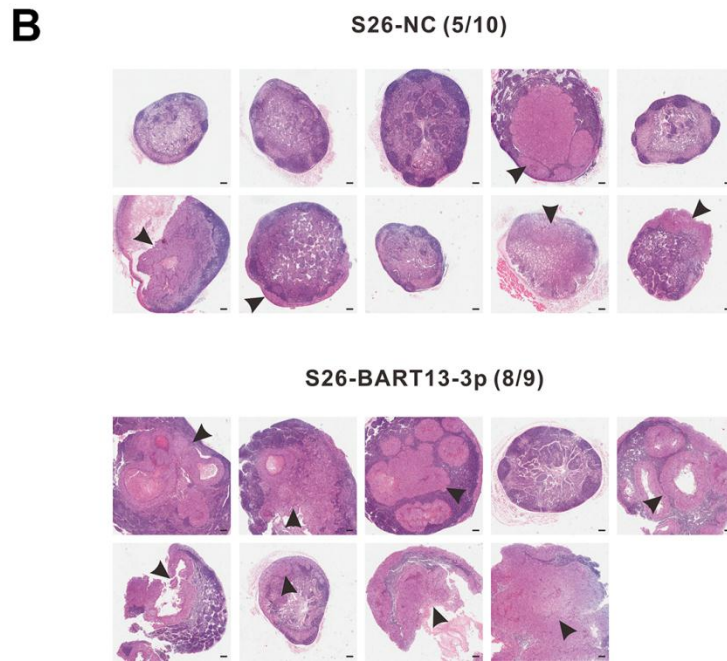
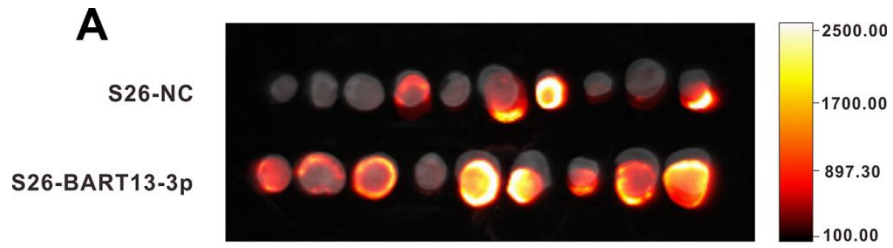
**SUPPLEMENTARY FIGURES**



**Supplementary Figure 1.** (A) Heat map produced by re-analyzing the non-coding RNA profiling data of human nasopharyngeal tissues (312 paraffin-embedded NPC specimens vs. 18 normal nasopharyngeal tissues) in GEO database.



**Supplementary Figure 2.** EBV-miR-BART13-3p overexpression promoted migration and invasion of CNE2 and 5-8F cells. (A) CNE1, CNE2, S26 and 5-8F cells were transfected with BART13-3p mimics or negative control for 24 h and then harvested. Real-time PCR was used to determine the miRNA expression levels of BART13-3p. (B) Wound healing assay. (C) Transwell assay without matrigel. (D) Transwell assay with matrigel. Scale bar, 100  $\mu$ m.



**Supplementary Figure 3. EBV-miR-BART13-3p propelled NPC cells metastasis *in vivo*.** (A) *In vivo* imaging of ipsilateral inguinal lymph nodes collected from nude mice, the foot pads of which were inoculated with S26-NC-luc or S26-BART13-3p-luc. (B) H&E staining of inguinal lymph nodes. Where the arrows point showed tumor metastasis. Scale bar, 200  $\mu$ m.