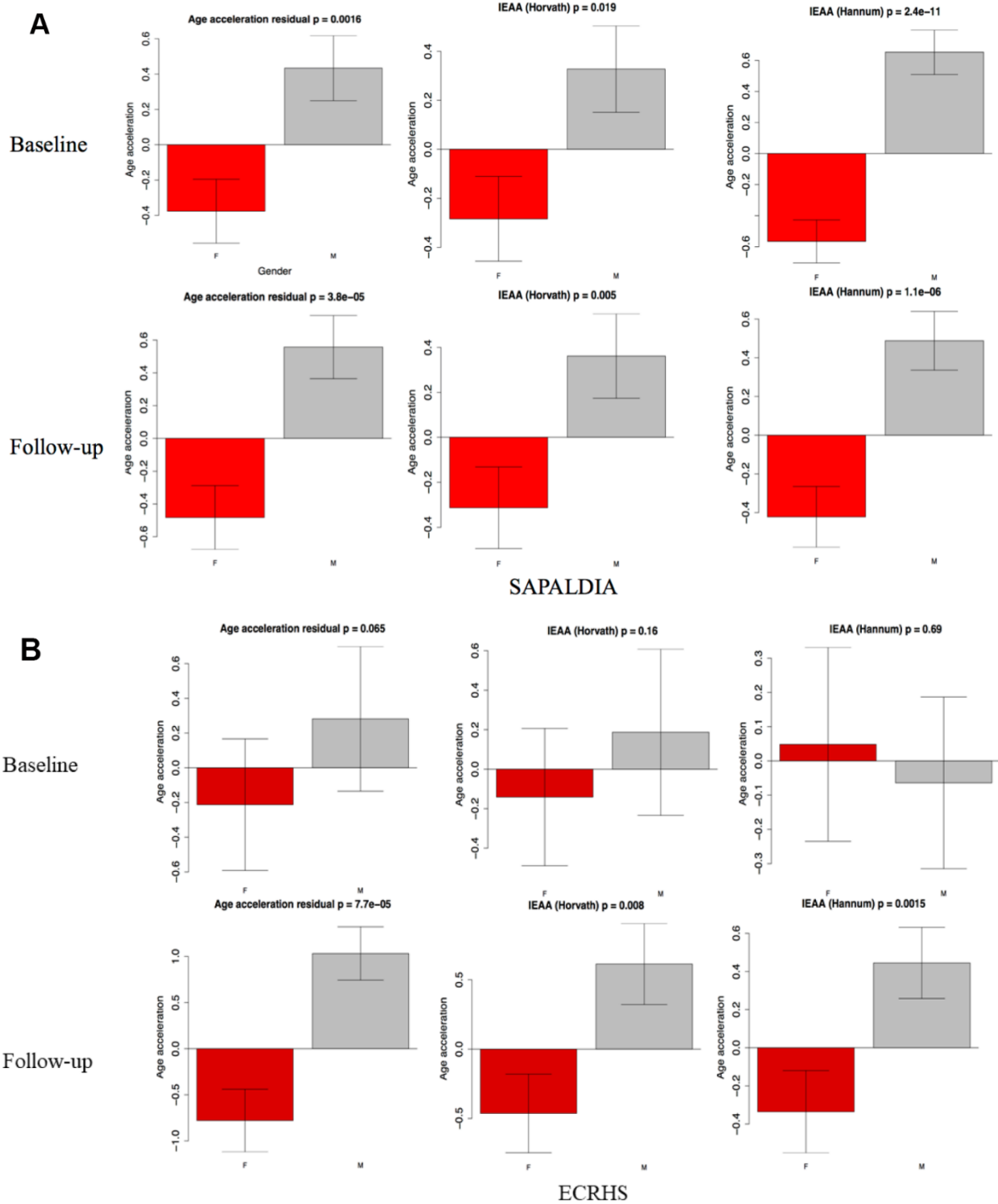
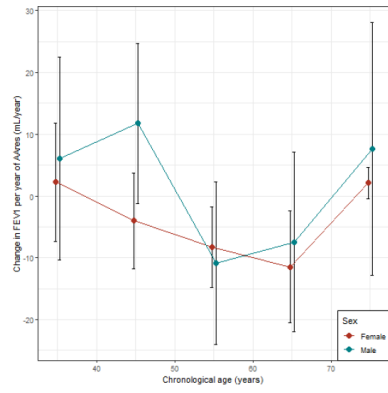


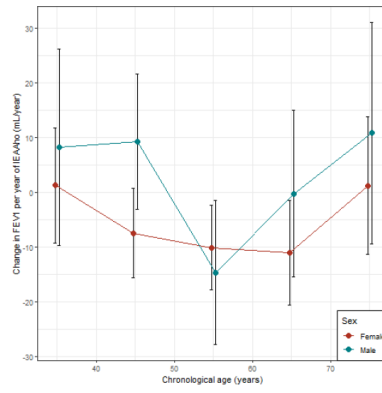
SUPPLEMENTARY FIGURES



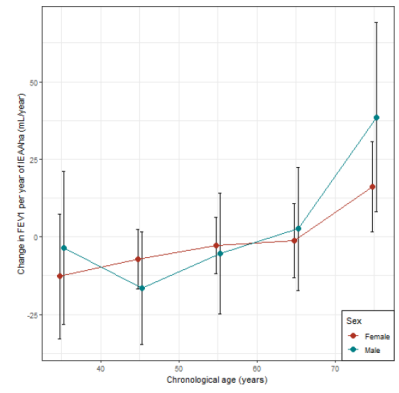
Supplementary Figure 1. Sex-specific effect on epigenetic age acceleration.



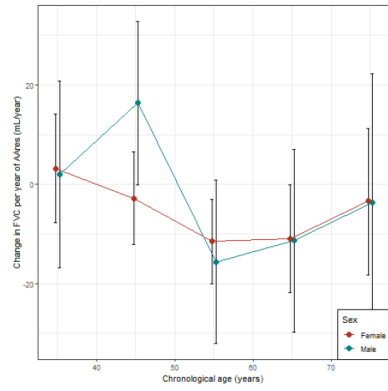
**A** Changes in FEV<sub>1</sub> per year of AA<sub>res</sub>



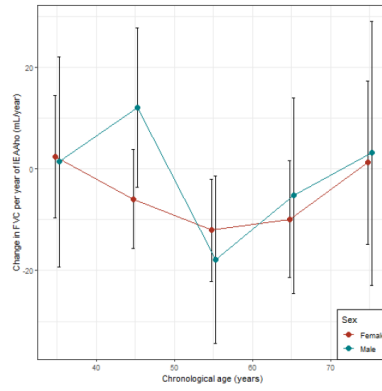
**B** Changes in FEV<sub>1</sub> per year of IEAA



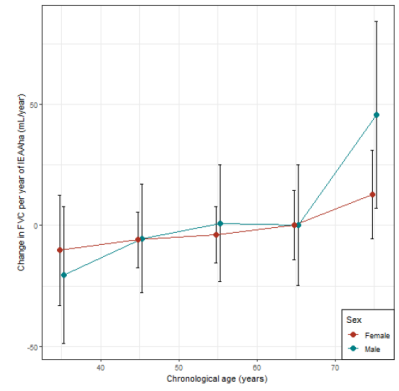
**C** Changes in FEV<sub>1</sub> per year of EEAA



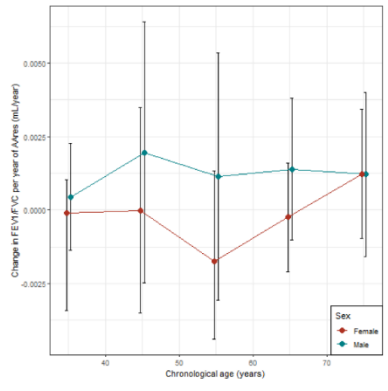
**D** Changes in FVC per year of AA<sub>res</sub>



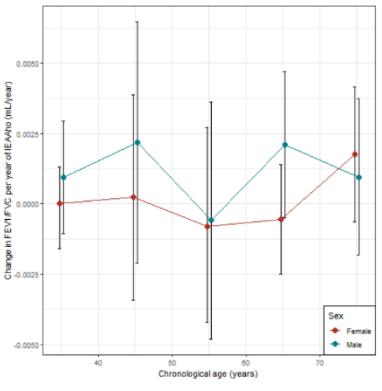
**E** Changes in FVC per year of IEAA



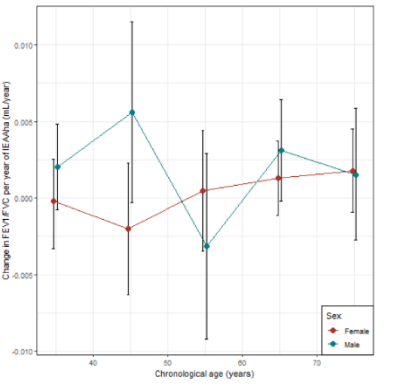
**F** Changes in FVC per year of EEAA



**G** Changes in FEV<sub>1</sub>/FVC per year of AA<sub>res</sub>



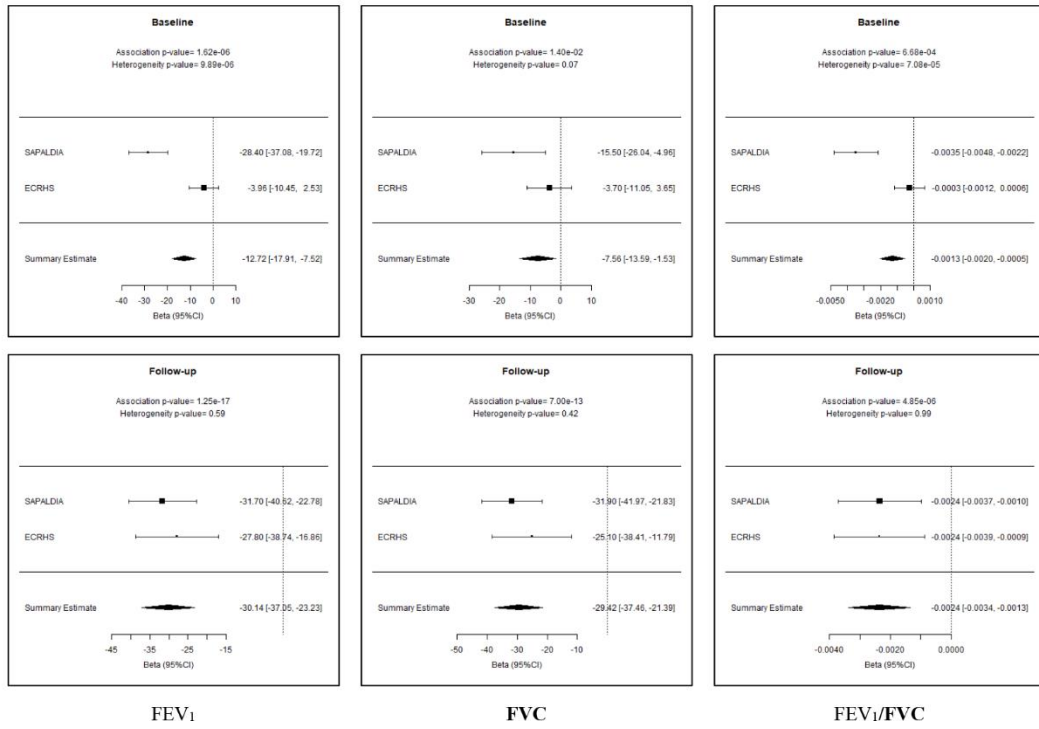
**H** Changes in FEV<sub>1</sub>/FVC per year of IEAA



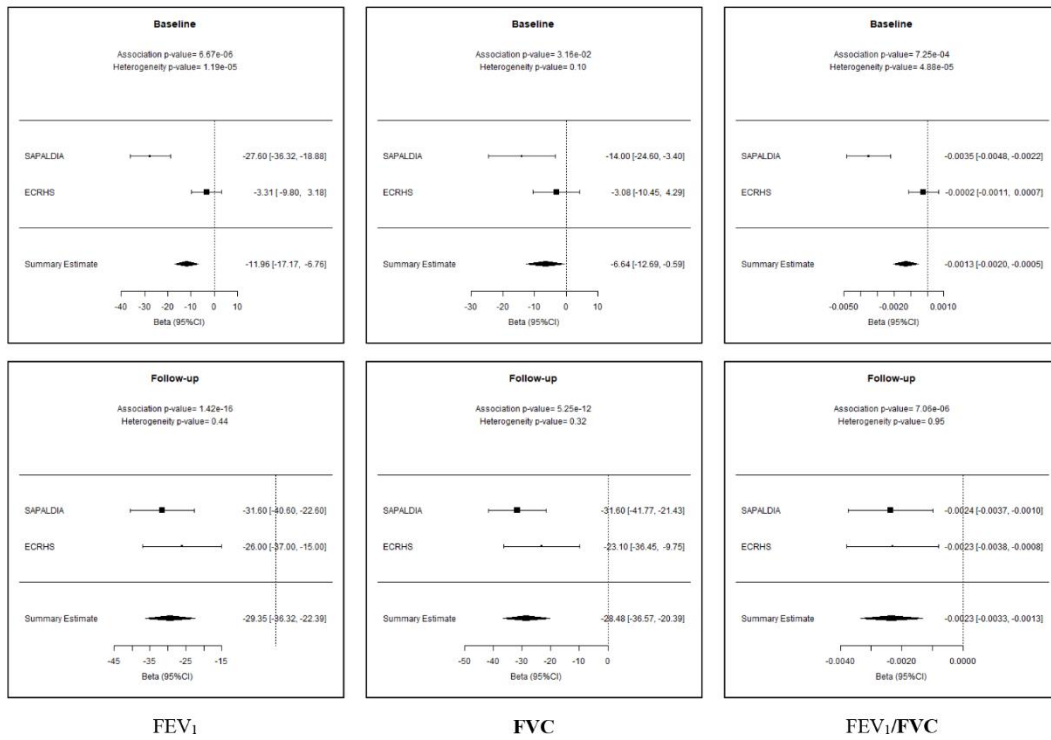
**I** Changes in FEV<sub>1</sub>/FVC per year of EEAA

**Supplementary Figure 2. Age stratified analyses comparing association between lung function and epigenetic age accelerations.** X-axis represents stratifications by 10 years intervals. Y-axis represents the estimates (changed in lung function per year of epigenetic age acceleration in mLs/year) from the linear models with 95% confidence intervals.

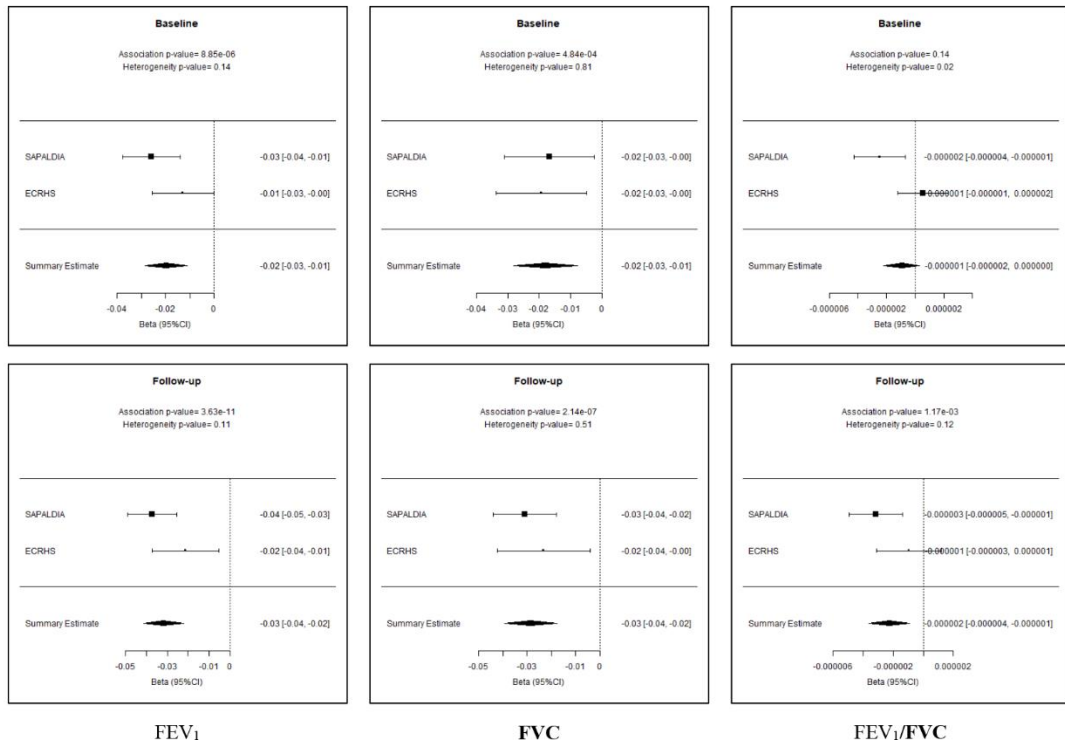
**A** DNAmAge<sub>grim</sub>



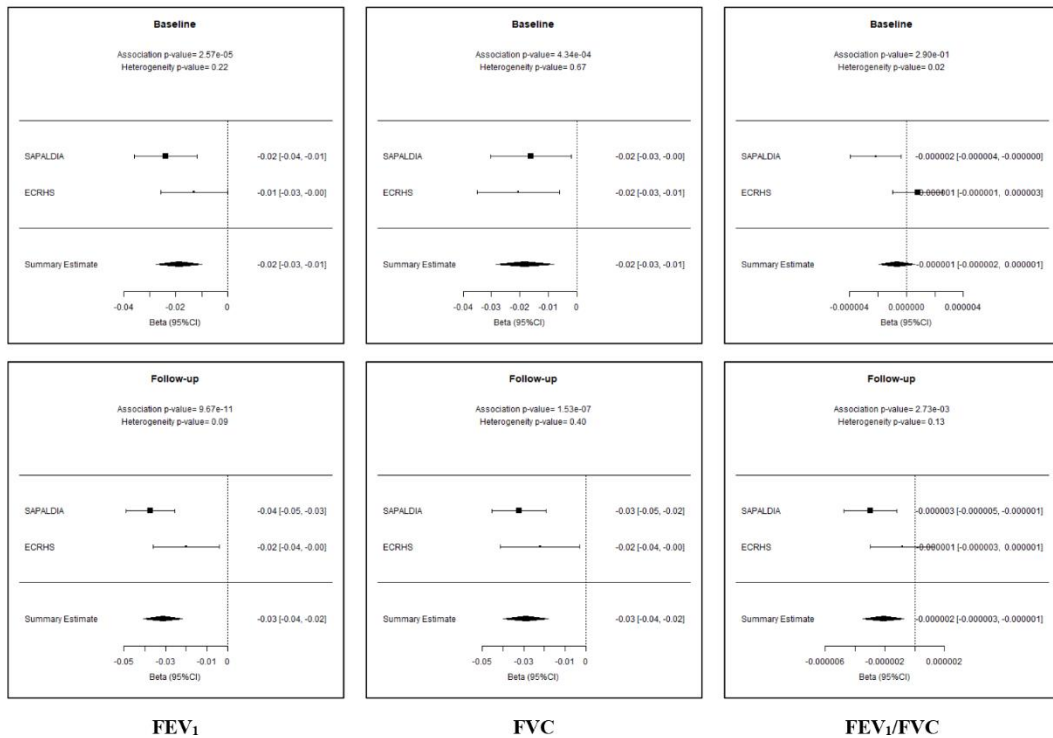
**B** AA<sub>grim</sub>



C DNAmPAI1

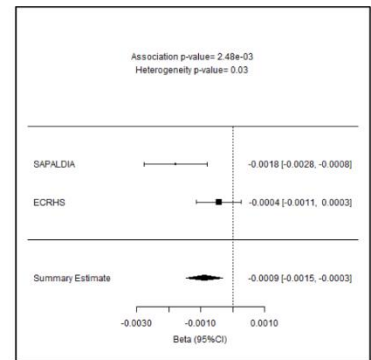
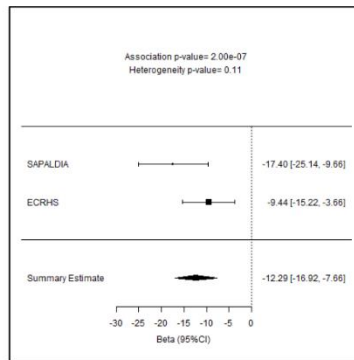
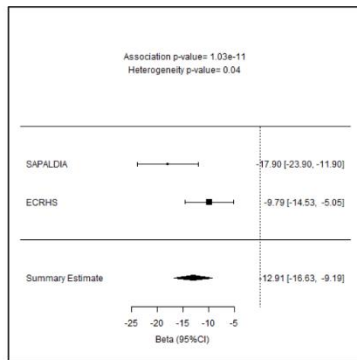


D DNAmPAI<sub>adj</sub>

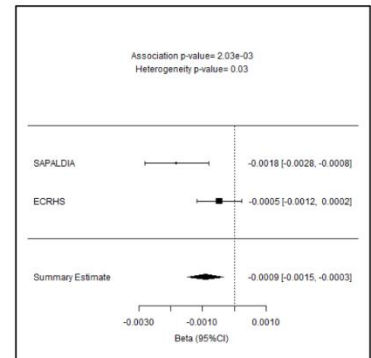
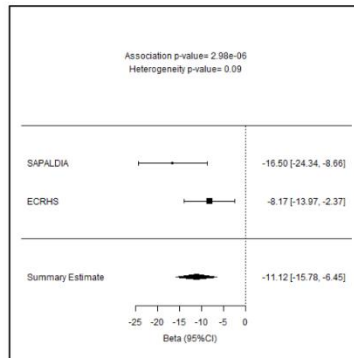
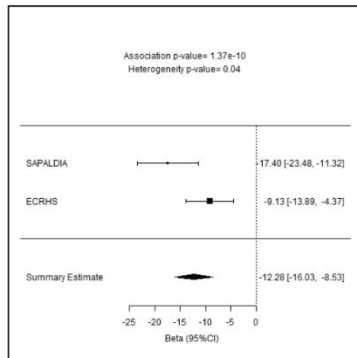


Supplementary Figure 3. Cross-sectional meta-analysis results of association between DNAm GrimAge (DNAmGrim), Age-adjusted measure of DNAm GrimAge (AA<sub>grim</sub>), DNAm plasminogen activation inhibitor 1 (DNAmPAI1) and Age adjusted DNAm PAI-1 (DNAmPAI<sub>adj</sub>) with lung function (FEV<sub>1</sub>, FVC, and FEV<sub>1</sub>/FVC) in SAPALDIA and ECRHS cohorts. The estimates have been measured with 95% confidence interval.

**DNAmAge<sub>grim</sub>**



**AA<sub>grim</sub>**

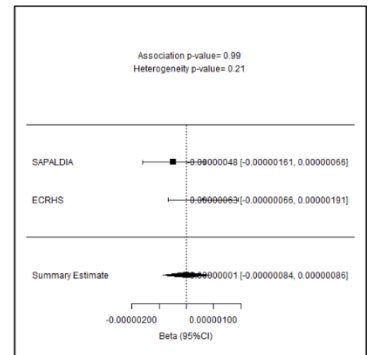
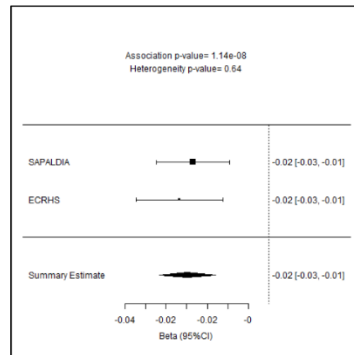
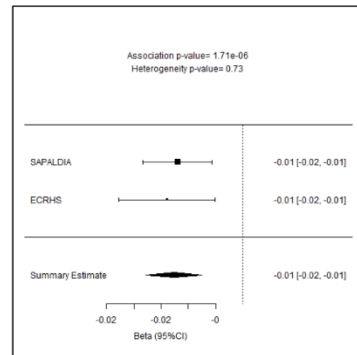


**FEV<sub>1</sub>**

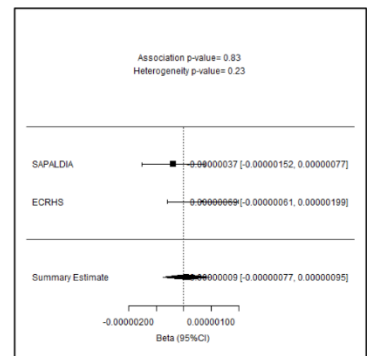
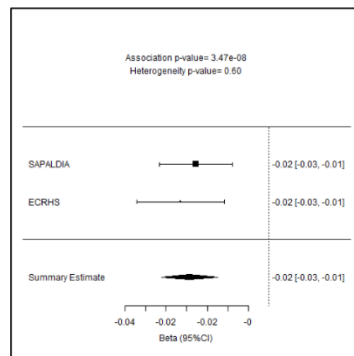
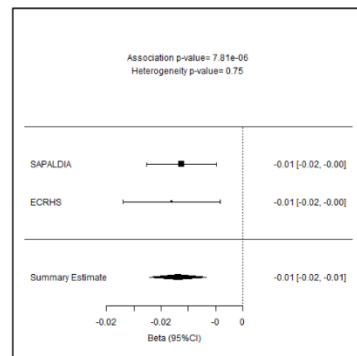
**FVC**

**FEV<sub>1</sub>/FVC**

**DNAmPAI1**



**DNAmPAI1<sub>adj</sub>**



**FEV<sub>1</sub>**

**FVC**

**FEV<sub>1</sub>/FVC**

**Supplementary Figure 4. Linear mixed model meta-analysis association of lung function (FEV<sub>1</sub>, FVC, and FEV<sub>1</sub>/FVC) with DNAm GrimAge (DNAmGrim), Age-adjusted measure of DNAm GrimAge (AA<sub>grim</sub>), DNAm plasminogen activation inhibitor 1 (DNAmPAI1) and Age adjusted DNAm PAI-1 (DNAmPAI1<sub>adj</sub>) two time points (baseline and follow-up). The estimates have been measured with 95% confidence interval.**