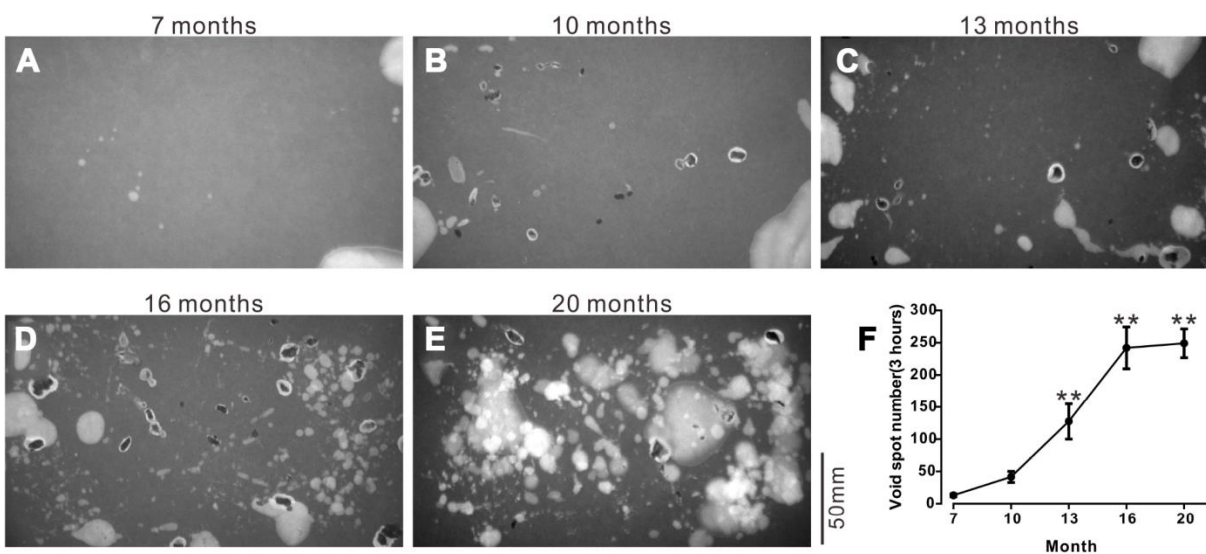


## SUPPLEMENTARY FIGURE



**Supplementary Figure 1. The void spots of mice were found to have increased concomitantly with an increase in age. (A–E)** are void spots of 7 month, 10 month, 13 month, 16 month, and 20 month aged mice respectively. (F) Summary data of (A–E). We used one-way ANOVA for comparisons between treatment groups. VS 7 months, \*\* $P < 0.01$ .