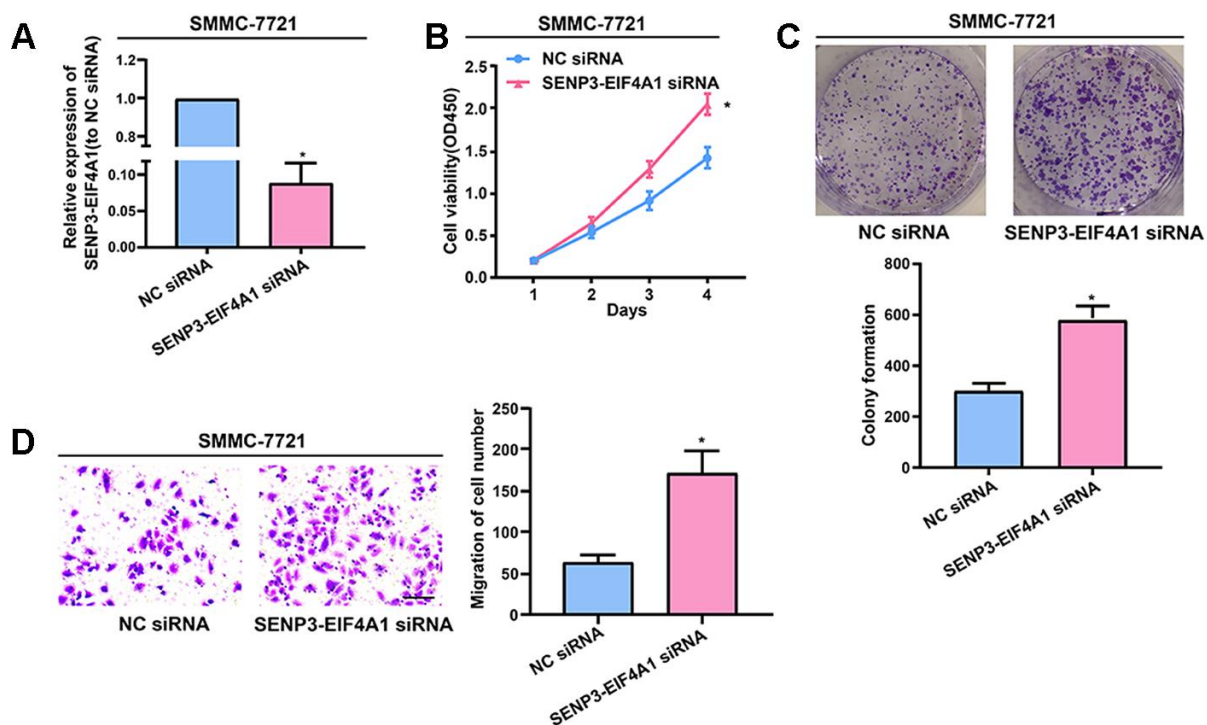
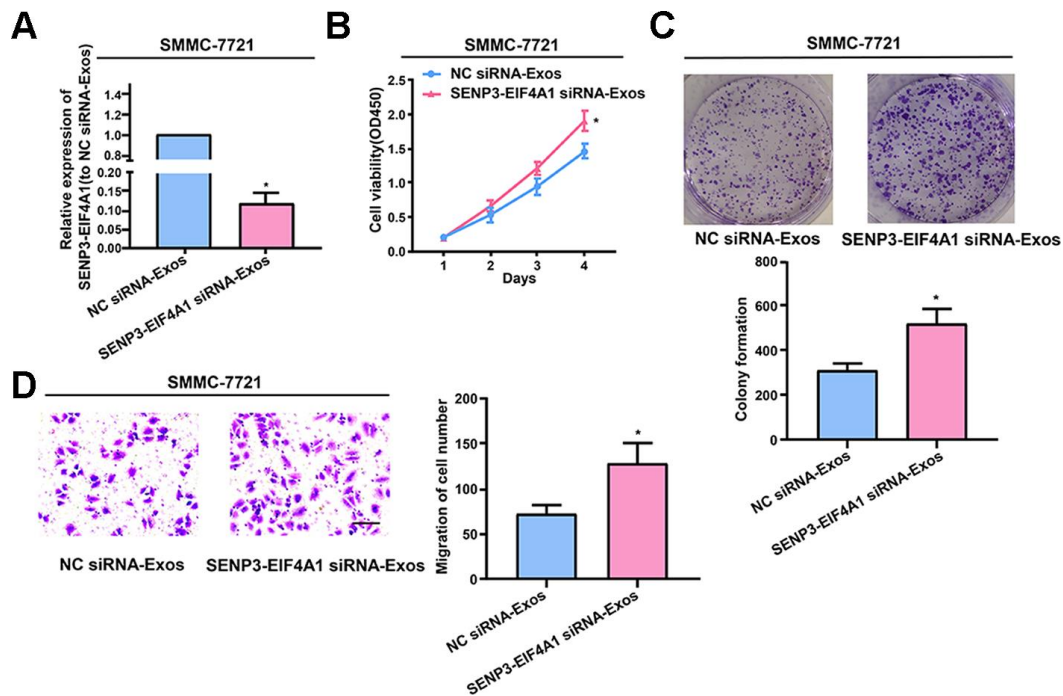


## SUPPLEMENTARY FIGURES



**Supplementary Figure 1. Effect of *SENP3-EIF4A1* on HCC cellular phenotype.** SMMC-7721 cells are transfected with *SENP3-EIF4A1* siRNA or negative control. (A) Detection of the mRNA level of *SENP3-EIF4A1* via qRT-PCR. (B) Examination of cell proliferation via CCK8 assays. (C) Determination of cell colony formation ability via a colony-forming growth assay. The colonies are counted and captured. (D) Representative images of migration assays of SMMC-7721 cells. The cells are counted. Results are shown as mean  $\pm$  SD. \* $P < 0.05$ . All of the experiments were performed in triplicate.



**Supplementary Figure 2. Effect of exosomal *SENP3-EIF4A1* on HCC cellular phenotype.** Exosomes separated from HL-7702 cells transfected with *SENP3-EIF4A1* siRNA or NC siRNA are named *SENP3-EIF4A1* siRNA-Exos or NC siRNA-Exos, respectively. After extraction, their exosomes are added to the SMMC-7721 cells for 24h. (A) Detection of the mRNA level of *SENP3-EIF4A1* via qRT-PCR. (B) Detection of cell proliferation by a CCK8 assay. (C) Examination of cell colony formation ability by a colony-forming growth assay. The colonies are counted and captured. (D) Representative images of migration assays of SMMC-7721 cells. The cells are counted. Results are shown as mean  $\pm$  SD. \* $P < 0.05$ . All of the experiments were performed in triplicate.