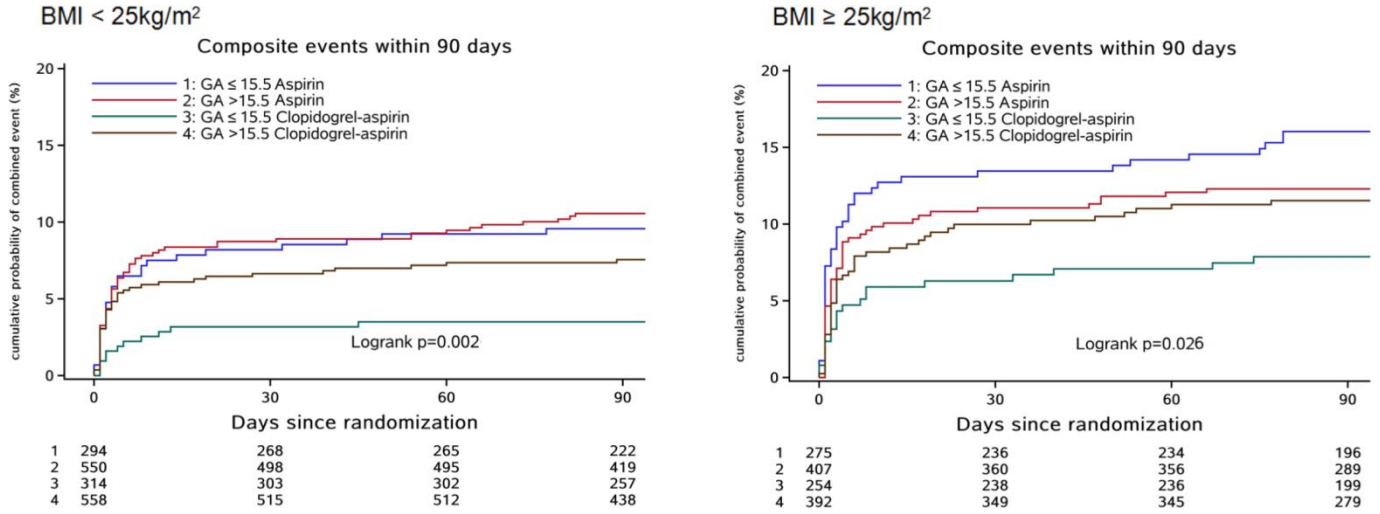
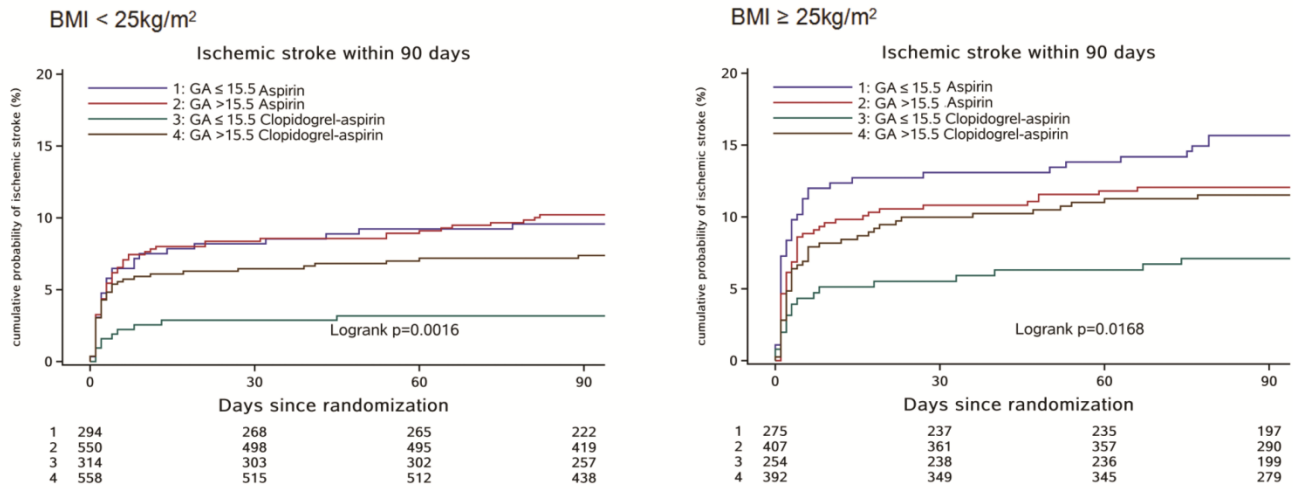


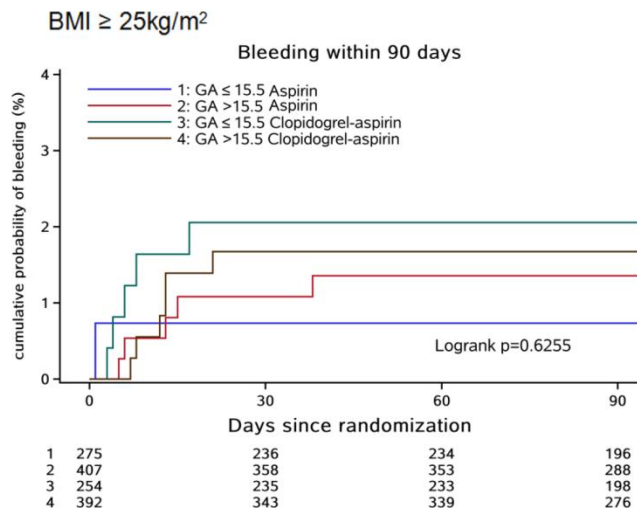
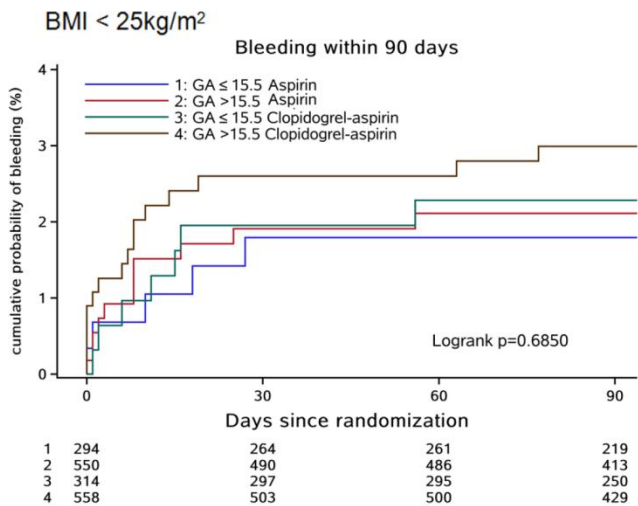
**SUPPLEMENTARY FIGURES**



**Supplementary Figure 1. Cumulative probability of secondary efficacy outcomes (composite events) stratified by BMI status and GA levels.** Abbreviation: BMI, body mass index; GA, glycated albumin. Composite events were defined as a new clinical vascular event, including ischemic stroke, hemorrhagic stroke, myocardial infarction, or vascular death.



**Supplementary Figure 2. Cumulative probability of secondary efficacy outcomes (ischemic stroke) stratified by BMI status and GA levels.** Abbreviation: BMI, body mass index; GA, glycated albumin.



**Supplementary Figure 3. Cumulative probability of secondary efficacy outcomes (bleeding) stratified by BMI status and GA levels.** Abbreviation: BMI, body mass index; GA, glycated albumin. Bleeding was defined as any bleeding event according to the Global Utilization of Streptokinase and Tissue Plasminogen Activator for Occluded Coronary Arteries criteria.