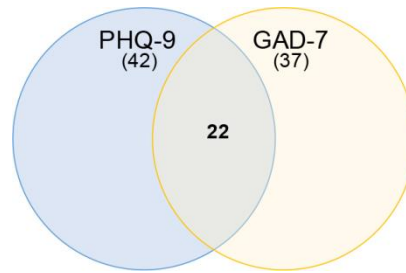
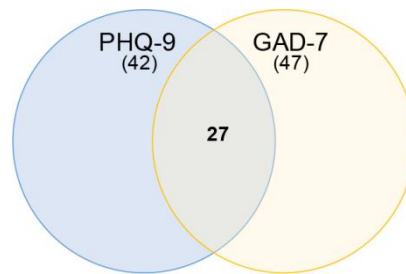


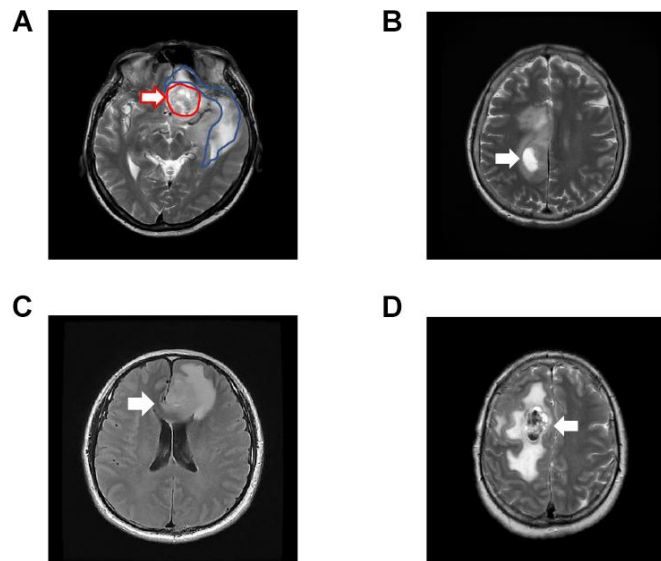
SUPPLEMENTARY FIGURES



Supplementary Figure 1. Patients gained higher scores of both the two scales.



Supplementary Figure 2. Patients gained lower scores of both the two scales.



Supplementary Figure 3. Magnetic Resonance Imaging (MRI) figure shows different patterns of GBM patient. (A) Tumor body (red arrow) and peritumor edema (blue arrow); (B) Cyst with a tumor (white arrow); (C) Tumor and edema cross midline (white arrow); (D) Necrosis within a tumor (white arrow).