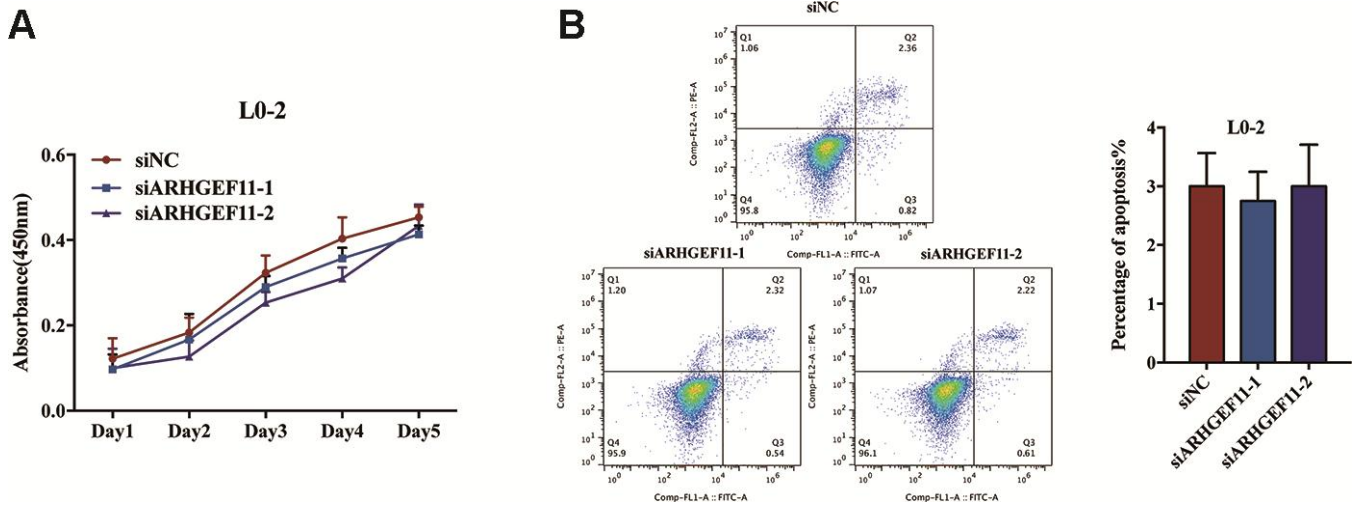
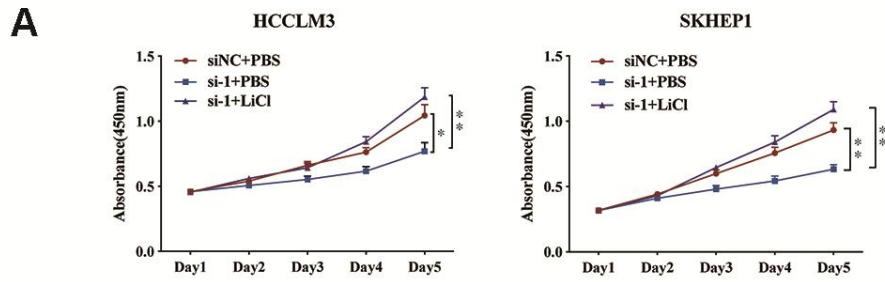


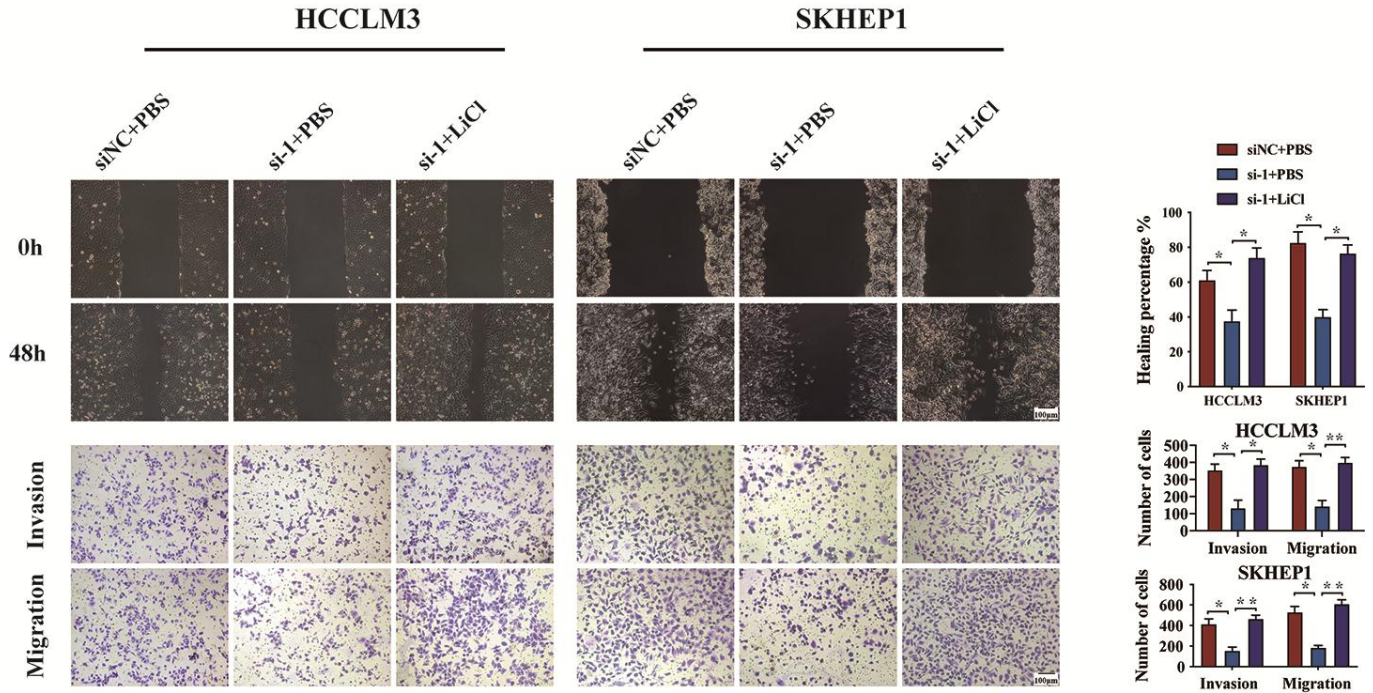
SUPPLEMENTARY FIGURES



Supplementary Figure 1. Knockdown of ARHGEF11 had no impact on the cell viability and apoptosis of the non-neoplastic cell line L0-2. (A) The viability of hepatoma cells detected by CCK8 assay. (B) Cell apoptosis detected by flow cytometry.



**B**



**Supplementary Figure 2. The  $\beta$ -catenin agonist, LiCl (40 mM for 6 hours), could completely rescue the phenotype of ARHGEF11 silence. (A) The viability of hepatoma cells detected by CCK8 assay. (B) Migration ability examined by Wound healing assay (up panel). The migration and matrigel invasion ability detected by Transwell assay (below panel).**