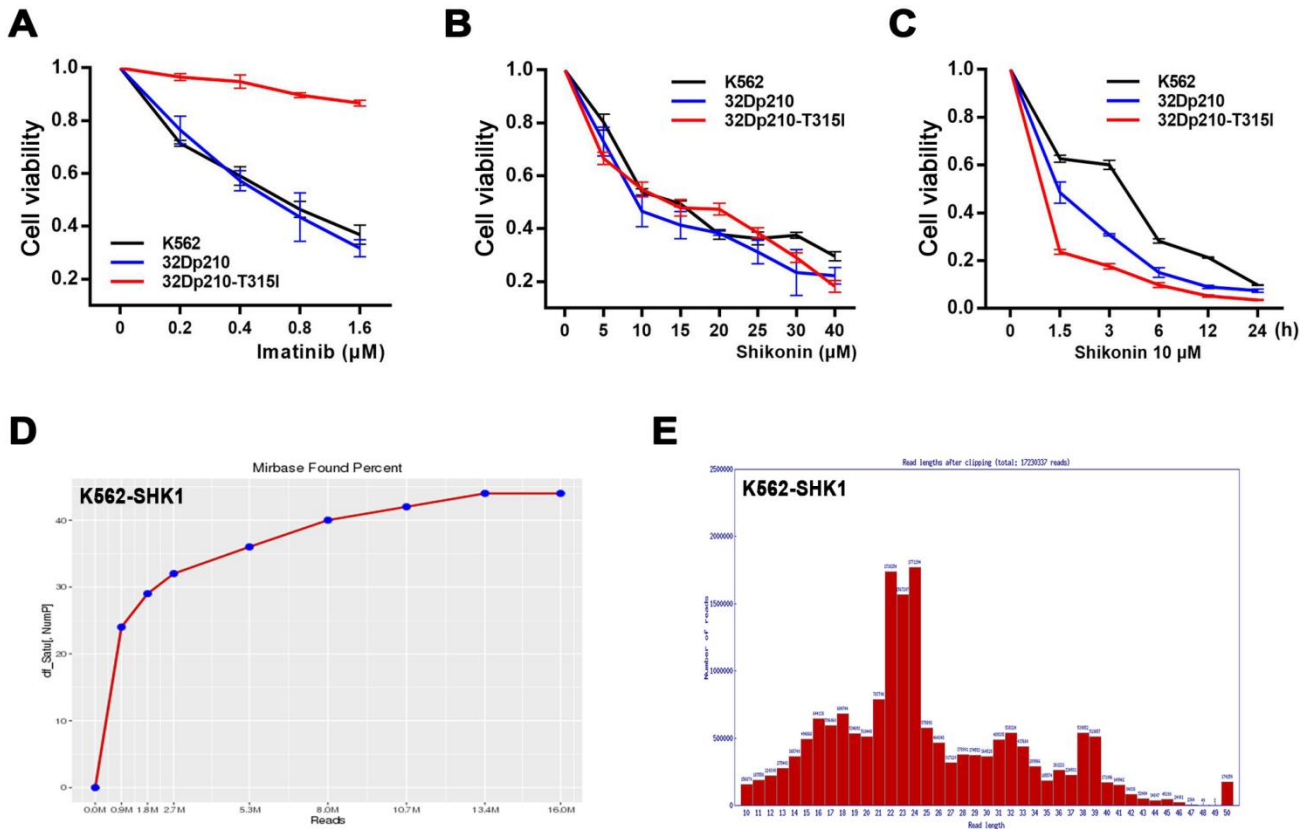


SUPPLEMENTARY FIGURE



Supplementary Figure 1. (A) CML cells (K562, 32Dp210, and 32Dp210-T315I) were treated with various imatinib concentrations (0, 0.2, 0.4, 0.8, or 1.6 μM) for 24 h. Cell survival rates were measured with an MTT assay. (B) CML cell lines were cultured with or without different concentrations of shikonin for 3 h. Growth inhibition was assessed with an MTT assay. (C) MTT viability assay was performed in CML cells treated with 10 μM shikonin for different times (0, 1.5, 3, 6, 12, or 24 h). (D) Saturation analysis of each sample during NGS. (E) Read length distribution in each sample after adapter trimming and quality control. All experiments were repeated at least three times.