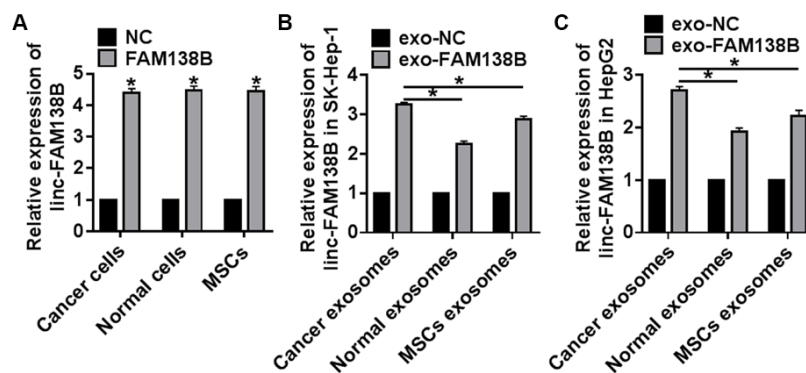


SUPPLEMENTARY FIGURES



Supplementary Figure 1. Cancer cells transmitted exo-FAM138B into hepatocellular carcinoma cell lines. (A) Linc-FAM138B or NC was transfected into cancer cells, normal cells and MSCs, the expression of linc-FAM138B was tested by qRT-PCR. Exosomes were isolated from the supernatant of cancer cells, normal cells and MSCs after 36 h of transfection, then SK-Hep-1 (B) and HepG2 (C) cells were incubated with exosomes.