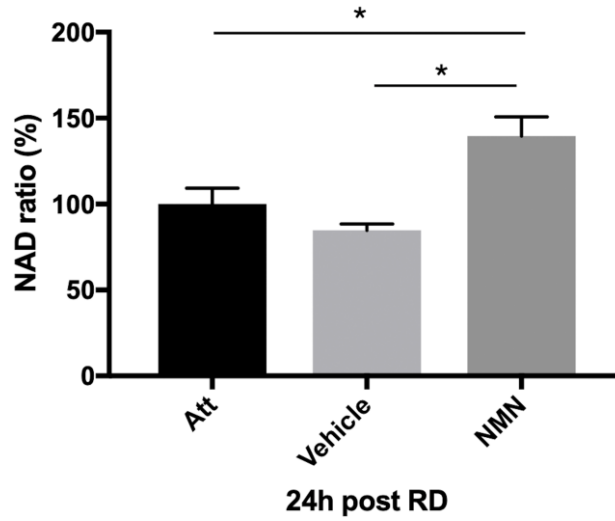
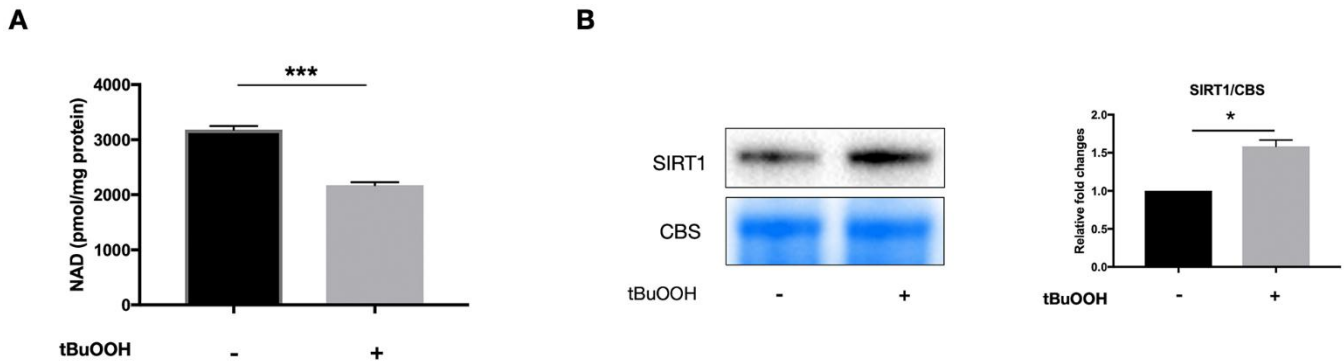


SUPPLEMENTARY FIGURES



Supplementary Figure 1. NMN administration upregulates NAD⁺ levels in RPE/choroid complex units after retinal detachment (RD). A tendency of decreasing NAD⁺ levels was seen in vehicle-treated RPE/choroid compared to the attached, but no significance was found. N = 3 to 4 eyes per group. Statistical significance was analyzed with one-way ANOVA followed by Tukey-Kramer adjustments. *p<0.05. **p<0.01. ***p<0.001. Data are mean ± SEM.



Supplementary Figure 2. Baseline NAD⁺ and SIRT1 level of 661W cells under oxidative stress. (A) NAD⁺ levels were significantly reduced in the oxidative stress model compared to control. N = 6 per group. (B) SIRT1 protein expressions were unregulated in the oxidative stress model compared to control. N = 3 per group. Statistical significance was analyzed with the unpaired Student's t-test. *p<0.05. **p<0.01. ***p<0.001. Data are mean ± SEM.